



The Chronicle

A NEWS & INFORMATION EXCHANGE FORUM

JULY 2005

"Women of Faith Conference"

at the Pepsi Center

Friday, Aug. 19 7-9pm

& Saturday, Aug. 20 9am-5pm

Join us for two extraordinary days of laughter, music (Kristin Chenoweth, Avalon, and Nichole Nordeman), special guests, and all-new messages from the Women of Faith speaker team-Thelma Wells, Marilyn Meberg, Sheila Walsh,

Patsy Clairmont, Luci Swindoll, and Nicole Johnson. Real stories from real women who have learned what it is to have faith. The kind of faith you need to handle the challenges life throws at all of us.

We have a limited amount of tickets available

cost is \$65.00 for *both* days

Contact Pam Rowley at 303-791-0659x32

"Faith means being sure of the things we hope for. And faith means knowing something is real even if we do not see it."

Hebrews 11:1

Mark your calendar now for these special selected upcoming events for 2005-2006

- Jazz at St. Luke's Benefit Concert - Sunday, October 9th at 7:00pm
- *Fiddler on the Roof* - November 4th & 5th at 7:00pm and November 6th at 3:00pm
- St. Luke's Christmas Cantata - Sunday, December 4th at 9:00 and 11:00am
- Sound of the Rockies Christmas Benefit Concert - Thursday, December 8th at 8:00pm
- Instruments at St. Luke's Benefit Concert – Saturday, February 11th at 7:00pm
- Ministers of Swing Dinner Dance - Saturday, March 4th at 6:00pm
- Drama Production TBA – Friday, March 10th and Saturday, March 11th
- Holy Week – Thursday, April 6th and Friday, April 7th – *Godspell*
- St. Luke's All Ensemble Benefit Concert - Saturday, May 13th at 7:00pm

<i>Stephen Ministry</i>	2
<i>Around St. Luke's</i>	3
<i>Thought's from Fred</i>	4
<i>Youth</i>	6
<i>Prayer Concern's</i>	10
<i>St. Luke's Classified</i>	11

What is Stephen Ministry and how did it begin? It started back in 1974 when Kenneth C. Haugk, a pastor and clinical psychologist, was pastor of St. Stephen's Lutheran Church in St. Louis, Missouri. He was looking forward to making a positive impact on his congregation and community by providing pastoral care to all those experiencing divorce, grief, hospitalization, discouragement, and other life difficulties.

Very quickly, though, he found that the needs for care far exceeded that which he alone could provide. With prayerful consideration he realized that God didn't intend for pastors to monopolize ministry. Rather, God gave all his people gifts for ministry and one of his roles as pastor was to equip others to use their gifts. Stephen Ministry is a ministry in which trained and supervised lay persons provide one-to-one Christian care to individuals facing life challenges or difficulties.

Over the past 30 years this not-for-profit ministry organization has trained thousands of lay people in all 50 states, most Canadian provinces and several other countries to provide distinctively Christian care to people who need it. Recently, five members of St. Luke's completed the seven day intensive training course to become Stephen Leaders. Pam Rowley, Doug Rowley, Sherry Merrill, Sallie Suby-Long and Sue Townsend will begin Stephen Ministry training classes this fall to bring this ministry to our congregation and community.

Being a Stephen Minister requires a 24 month commitment of service to the program. Fifty hours of training will be broken down into twenty 2-1/2 hour sessions and will include, among other topics, The Art of Listening, Min-

istering to Those Experiencing Grief, Confidentiality, and Distinctively Christian Caring. After training they will provide quality one-to-one ministry by engaging in a care giving relationship that focuses on the unique needs of one person and lasts as long as the needs exist.

The rewards of being a Stephen Minister far exceed the commitment required. Many Stephen Ministers report that the friendship and support of the Christian community, personal growth through the training, service, and supervision, as well as enhanced relationships with family, friends and co-workers are all benefits that they receive through this program.

Any individuals who feel the call to serve Christ by bringing comfort to those in need are encouraged to contact Pam Rowley at the church 303-791-0659 or Sue Townsend 303-220-8830.

Membership

We will be offering the following dates for our "Next Step" class. This class covers the History of Methodism, History of St. Luke's, and information about the many ministries of St. Luke's and how you can serve. If you are then interested in joining St. Luke's family, the membership ceremony will be within the same month at the service of your choice. Please select the class you would like to attend and call Lynda Fickling for a reservation 303-791-0659x20.

- Sunday, August 14, 11am-2:30pm
- Membership Ceremony on Sunday, August 21
- Sunday, Sept. 18, 11am-2:30pm
- Membership Ceremony on Sunday, Sept. 25
- *Wednesday, Oct. 19, 5:30pm-8:30pm
- Membership Ceremony on Sunday, Oct. 30
- Sunday, Nov. 6, 11am-2:30pm
- Membership Ceremony on Sunday, Nov. 20
- Sunday, Dec. 11, 11am-2:30pm
- Membership Ceremony on Sunday Dec. 18

Hospitality Breakfast & Workshop

Saturday, Aug. 20

Are you someone who would like to serve as an Usher or Greeter at St. Luke's? If so, we would like to invite you to our first Annual Appreciation Breakfast/Workshop. Please feel free to bring your family between 7am-8:30am for breakfast, followed by a workshop from 8:30am-10:30am. Come, get to know your fellow team members and be a part of one of our valued worship teams. Childcare available from 8:30am-11am by reservations at 303-791-0659x47. Please RSVP to one of the following team leaders:

Worship Advocate: Cheryl Wolff 303-303-683-2593

Ushers- Hospitality Staff Liasons: Jim Ramsey 303-791-0659x23

Greeters- Lynda Fickling: 303-791-0659x20

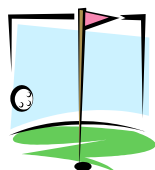
"...for I was hungry and you gave me food, I was thirsty and you gave me drink, I was a stranger and you welcomed me." Matthew 25:35

2nd annual St. Luke's UMC Invitational Golf Tournament

Saturday, September 24th

1:00 pm shotgun start

Highlands Ranch Golf Club



**Fun, fellowship, food
& great prizes!!!**

For sponsorship information, volunteer opportunities and tournament information contact Daniel Rapp

Watch the Chronicle for further tournament announcements & registration forms or check the website at: www.stlukeshr.com

Our last work day was a huge success thanks to the efforts of our dedicated and passionate drama ministry, always ready boy and girl scouts, our terrific trustees, their fantastic families and friends who made it to our church for the session. Although the weather didn't cooperate, these participants really did; attacking weeds, trimming bushes, fertilizing our lawns and making sprinkler system repairs. They even took on one of the most daunting tasks known in every suburban home -- they cleaned out our garage!



Inside, the volunteers cleaned and repaired lights, washed walls, and completed touch up painting. They sorted, repaired and moved chairs back to their places, then cleaned and reorganized several storage closets. All in all an amazing assortment of tasks were completed in record time. What a difference you all have made for everyone stepping inside.

As we near the end of the summer, we're already planning our next work day for August 27 from 8:00 - 12:00, just in time for our fall kick off activities. Please plan to join us then. Thank you all for making such a big difference for our church community, we could not manage this home without your continuing dedication commitment.

Thoughts From Fred

Having been such a lousy student myself, it surprises me that I am an advocate for education: reading, studying, thinking, becoming intellectually competent - things like that. Coming down to my last semester at the university I had a grade point average of .9454, and needed a 1 point (C average) to graduate. I signed up for 15 hours believing I could make it with 3 Bs and 2 Cs. I made 4 Bs and 1 C. I made a B I didn't even need! I graduated with a 1.0389 grade average. I was 852 in a class of 924, or in the upper 92.21%. That also meant I was in the lower 7.79%.

But somewhere through the years I became a believer in education. Not that that means I rank high among my ministerial peers, but in the church among lay folk, I do okay. I'm not smarter: St. Luke's is crowded with folks smarter than I, and who were and are great students in their chosen field. But in church, where there are no three month finals, or no periodic employment reviews, it is easy to consider biblical

and theological wisdom as optional, certainly not urgent. A lot of our education has to do with making a living, and most in St. Luke's do that very well, but there is such a thing as education for making not a living, but a life. And it really is not all that optional. Those life "mid-terms" happen often, and without notice. And you can go through a "life review" without knowing it.

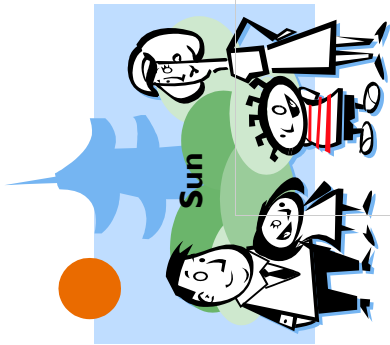
At this writing I don't know what St. Luke's is offering in adult education, but I am sure there is something for you. Check it out, sign up. And remember, in St. Luke's, the emphasis is not on acquiring information, but on learning how to assimilate it, how to think creatively. In St. Luke's, it is not remembering facts spewed out by some authority figure, but going through the struggle of fashioning your own self understandings.

Blessings,

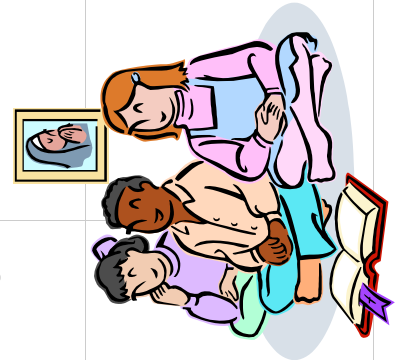
Fred Venable

August 2005

Children's Ministry Calendar



Mon	Tue	Wed	Thu	Fri	Sat
1	2 Children's Ministry Education Team Meeting 7:00 – 8:30	3 Playgroup Extravaganza at the church 9:30 – 11:00	4	5 Friday Friends meet at the church. Bring a sack lunch. 10 – 1:00	6
7 Sly, Jr. T-Shirt tie dying. 6-8:00 Supper provided.	9	10 Playgroup Extravaganza at the church 9:30 – 11:00	11	12	13
14	16	17 Playgroup Extravaganza at the church 9:30 – 11:00	18	19 Friday Friends meet at the church. Bring a sack lunch. 10 – 1:00	20 Sunday School Orientation & Parent Information 8:30 – 11:30
21 Acolyte Pot Luck Picnic and Training 12:30 – 2:00	23 2 nd Sunday School Orientation & Parent Information 7:00-8:30	24 Playgroup Extravaganza at the church 9:30 – 11:00	25 Sunday School Cleanup 9:30 – 12:30	26 Family Movie Night	27
28 Summer Sunday School ends Nursery and Child-care Training 12:30 – 2:00 Lunch will be served	30	31 Playgroup Extravaganza at the church 9:30 – 11:00			



Shortcuts To Manhood Calendar

8/13 – Paintball Ad Regular schedules for SLY AM & SLY PM all month long.

8/26, 27, 28 – Ultimate Shortcut Retreat: High Ropes Course

Girls Enrichment Ministries Calendar

8/12 - Scrap-booking

Don't Miss

Volleyball on Tuesday nights 6:30 – 8:30 pm for all ages and ability levels.

Breakfast Club Thursday mornings from 10 – 11 am at Einstein's on HR Pkwy & Broadway.

A message from Ann



Hey Youth – St. Luke's Youth will be hosting the 30-Hour Famine Saturday – Sunday, August 6-7. The 30-Hour Famine will give you the chance to *taste* real hunger – and do something about the millions of kids around the world who *know* real hunger every day. Before the Famine, you'll raise money from sponsors (neighbors, friends, parents) who support your efforts. During the Famine, you'll learn about hunger around the world, what it's like to serve the community on an empty stomach, and the joy that comes from sharing this experience with other Youth. At the end of the 30 Hours, we will "break the fast" by sharing communion with the congregation.

"It will be two days you'll never forget!"

Members of the congregation will have a chance to stand with the Youth during the Famine. During the period of August 6-7, members are asked to skip a meal (or two!) and donate the money that would have paid for that food. We will also be accepting canned food items to be given to Harvesters after the Famine.

All Money raised will benefit World Vision, a Christian relief and development organization dedicated to helping children and their communities worldwide reach their full potential by tackling the causes of poverty. Through World Vision, it takes only \$30 to feed and care for a hungry child for a month! Where else can \$30 go so far and mean so much in the life of a child?

If you'd like to participate in the 30-Hour Famine, eat breakfast at 6:00 am on Saturday, August 6. We'll meet at church at 8:00 am to begin our activities. If you can't be there all day, refrain from food during your activities and join us when you can! We've packed the rest of the day with activities that will create the experience of a lifetime. See you then!!

Questions? Want to participate? Sponsor a Youth? Call Ann Smith at 303.470.0659 ext. 19



**Mission Definition:
2005 Sr. High
Mission Trip
Caguas, Puerto Rico**



**James Ramsey, Director of
Worship and the Arts**
303-791-0659 ext 23

**Carrie Mallery, Associate
Director of Music** 303-791-0659
ext 35

**Kay Coryell, Assistant Director
of Music** 303-791-0659 ext 43

Music Ministry Program

Music Ministry ensembles at St. Luke's wish to extend an open invitation to anyone who desires to share their musical gifts and talents for the upcoming year. Each ensemble is committed to the ministry at St. Luke's through practice, fun and fellowship. Most ensembles will begin in September and continue through May as a typical season. If you have any questions regarding any of the music ensembles, please don't hesitate to contact me by phone or by email. Otherwise, I look forward to seeing current members as well as new members very soon who want to share in this spiritual gift we call music-
James Ramsey

Brass Ensemble

The Brass Ensemble is active in Sunday morning worship services throughout the year either performing or accompanying choirs. The instrumentation includes Trumpet, French Horn, Trombone, Euphonium and Tuba. There is no age limitation, just the desire to make great brass music. The music level of the ensemble ranges from easy to medium difficulty. **Meeting Time/Place:** Rehearsals begin Saturday, August 27 from 9:00-10:00am in Asbury
Music Team Coordinator: Erik Wangsness 303-884-0358

Chancel Choir

The Chancel Choir rehearses for and participates in Sunday morn-

ing worship services regularly during the year. The choir sings a wide variety of music ranging in diversity from traditional to contemporary sacred. Whether you've had a lot of singing experience or you've had a little and would like to learn more, there is a place for you in the choir.

Meeting Time/Place: Rehearsals begin Thursday, September 8th from 7:30-9:00pm in Asbury
Music Team Leader and Director: James Ramsey 303-791-0659 ext 23

Cherub's Choir (3yrs-K)

The Cherub's Choir is a music and movement program for children 3 years through Kindergarten. The children learn about Christian values through song in a nurturing environment and develop motor skills through movement and playing instruments. They also perform for a few Sunday worship preludes throughout the year. Parents are encouraged to attend rehearsals with their children.

Meeting Time/Place: Begins September 14 and meets every Wednesday from 6:30-7:15pm in the David open area

Music Team Directors: Stacey Baird 303-470-5270, Nancy Betts and Suzanne Sharpe

Children's Tone Chimes

Children, grades 4-6 are invited to participate in this fun and musical WNL program. No experience needed. We will explore music by playing tone chimes.

Meeting Time/Place: Begins September 15th; Wednesday nights 7:00-7:45 in the Asbury Music Room
Contact: Kay Coryell 303-791-0659 ext 43

Children's Choir

The Children's Choir includes children 1st through 6th grade. They rehearse Sunday mornings to sing the prelude for Sunday morning worship

four to five times a year and learn Christian principles through song.

Meeting Time/Place: Begins September 11th and meets every Sunday from 8:30-9:15am in Asbury

Music Director: Kay Coryell 303-791-0659 ext 43

Flute Ensemble

The Flute Ensemble participates in Sunday morning worship services approximately once every month. If you want to dust off the old flute and get back to playing again, now is your chance. No age limit required. The music level of the ensemble ranges from easy to medium difficulty.

Meeting Time/Place: Begins September 10th; Saturdays 8:00 - 9:00am in Asbury

Music Team Coordinator: Ruth Smith 303-683-0676

Grace Notes

Grace Notes is a small gospel choir ensemble that meets on Thursday evenings before regular Chancel Choir practice. They sing for services throughout the year. All are welcome!

Meeting Time/Place: Begins September 8th and meets Thursdays from 7:00-7:30pm in Asbury

Music Team Coordinator: Marge Harper 303-971-0672

Kidz Prayz I and II

Kidz Prayz I and II is an opportunity for children 1st through 3rd grade (Kidz Prayz I) and 4th - 6th grade (Kidz Prayz II) to participate in learning to sing and play instruments as well as have fun. The Kidz Prayz program is designed to develop cognitive skills by engaging your child in a variety of musical and movement activities. **Meeting Time/Place:** Begins September 14th and meets Wednesdays 6:15 - 7:00pm in Asbury

Directors: Kay Coryell and James Ramsey 303-791-0659

Ministers of Swing

The Ministers of Swing is a full complement Big Band and Jazz Ensemble that plays benefit concerts and dances throughout the year at St. Luke's and in the community. We have a lot of fun jazzin' it up or swingin'. The music level of the ensemble ranges from medium easy to medium difficulty.

Meeting Time/Place: Begins August 27th and meets Saturdays from 10:00-11:15am in Asbury **Director:** James Ramsey 303-791-0659

Sonrise Band

The Sonrise Band plays for the 8:00am Sunday morning worship service throughout the year. The music ranges from contemporary to gospel.

Meeting Time/Place: Wednesdays from 7:30-9:00pm in Sanctuary **Music Team Coordinator:** Carrie Mallery 303-791-0659 ext 35

St. Luke's Chamber Ensemble

All strings welcome. If you've ever played or currently play violin, viola, cello or bass, then this is the place for you. We meet on Saturdays and play chamber music for Sunday morning preludes. The music level of the ensemble ranges from easy to medium easy.

Meeting Time/Place: Begins September 10th; Saturdays from 8:30-10:00am in the Sanctuary **Contact:** Mitchell Owens 303-683-4826

TinTinabulators Handbell Choir

The TinTinabulators Handbell Choir is a 5-octave handbell choir and rehearses every Tuesday to prepare for morning worship services once a month. All are encouraged who have the desire to get ringing again or want to learn how to ring.

Meeting Time/Place: Begins August 23rd and meets Tuesdays from 7:30-9:00pm in Asbury **Music Director:** Kay Coryell 303-791-0659 ext 43

Tone Chimes

The tone chimes is an extension of Wednesday Nite Live activities after Kidz Prayz II. The age level for the Tone Chimes is 4th - 6th grade. Increase your ringing ability and your music reading ability as well as have fun making music. **Meeting Time/Place:** Begins September 14th and meets Wednesdays 7:00 - 7:45pm in Asbury. **Directors:** Kay Coryell 303-791-0659 ext 43

Youth Handbell Choir

This is an opportunity for youth, grades 7-12 to build their musical skills through ringing Handbells and to have lots of fun doing it. Come and have a great time!

Meeting Time/Place: Begins August 23rd and meets Tuesdays from 6:30 - 7:30 in Asbury **Contact:** Kay Coryell 303-791-0659 ext 43

Youth Jazz Band

Come swing with us! This group is for youth in grades 7-12 who play instruments. You're invited to "jazz" with us Sunday Evenings or Saturday mornings. No previous jazz experience required. Bring your friends—the more, the merrier! The music level of the ensemble ranges from easy to medium. **Meeting Time/Place:** Begins August 14th and meets Sundays from 4:00 - 5:00pm in Asbury **Contact:** Kay Coryell 303-791-0659 ext 43

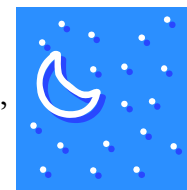
Youth Choir

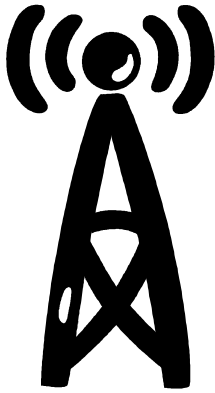
Youth in grades 7-12 are welcome to come and sing and have fun. No previous experience required only the desire to sing your heart out! We sing at Youth Worship services on Sunday evenings and occasionally for regular worship services on Sunday mornings. Bring a friend! **Meeting Time/Place:** Begins August 14th and meets Sundays from 5:00 - 6:00pm in Asbury **Contact:** Kay Coryell 303-791-0659 ext 43

Coming Soon! St. Luke's Concert Band for all ages beginning on January 7th, 2006.

ST. ANDREW UNDER THE STARS TICKETS ON SALE TODAY!

This outdoor concert series includes: August 6, The Best of Broadway and More; August 13, Molly Brown Visits Denver; August 21, Sing, Sing-A-Long; August 27, Renegade country/western band; and September 10, Jazz West. Gather at 7:30 pm for the concert at 8:00. Bring lawn chairs or blankets. Bring a picnic or purchase snacks at St. Andrew. Tickets are \$20 per car per event, \$18 in advance; Individual tickets are \$10 per event or \$8 in advance; Advance season tickets (all five concerts) are \$75 per car or \$35 per individual. For information please call St. Andrew UMC, 303-794-2683





Broadcast News!!

Do you need a little help keeping up with the events at St. Luke's? Here's the secret...keep up by sending your e-mail address to Lynda Fickling. She will keep you up to date on the events posted for the week by sending you the

latest news via e-mail! No more excuses, you'll always be in the know!

Ps...don't forget to inform us when you change your e-mail address

Our Mission:

We welcome you to our Christian family, where we share life.

Wherever you are in your faith journey,

You are accepted and encouraged to grow spiritually.

Join us in growing together toward full humanity

Through living the teachings of Jesus:

Love, Acceptance, Justice and Hope

Continued Prayers:

Safe journey home for our 47 Youth and Adult Mission workers in Puerto Rico.

Our Men and Women in the Armed Forces.



Bob Abbott -CA - now at home! ; Sharon Griffith(Joy Damsgard's sis.'s sister-in-law)CA - add. Spots/ broken arm; James Wakefield (Jan Stull's father) Rectal CA; Maxine Bauer (Brian Bauer's grandmother) macular Degeneration-eye; Gerry Wright (Gail Abernathy's mother) Liver CA - new stent; Rex Cochran; Jacqueline Zgoda (Laura Zgoda's mother-in-law) Nasal CA; Madilyn Johnson (Katie Johnston's 1 yr. old cousin) - Lymphatic CA; Carolyn Dean - Prayers for strength during recovery from stem cell transplant; Norma Harris - prayers; Clarine Ransick (Eric Ransick's mother) Lymphoma; Darcy Wells (friend of the Tolleson's) CA; Cindy Wick (Jean Brown's sister-in-law) recurring CA; Jeff Patefield - CA; Nancy Rawls (Betsy Keyack's sister) Breast/Lymph CA; Jackie Durban - prayers; Linda Heister (Tammy Heister's mother) Kidney CA; Estelle West (Fran & Bob West's daughter) surg. June - went well; Jennifer Emerson-Roy (Harry & Nancy Cushing's niece) Serious facial disease; Donny Stone (Rebecca Cushing's friend) 15yrs. old - CA; Deb Murphy (Little School mom) Recurring CA - breast, liver, and lung; Dave Denniston (Former Little School teacher's son) sledging acc.-Paralyzed @Craig Martha Burgett - Fractured Hip - Rib; Melissa Hemphill - prayers Syd Harrison (friend of Brad Chase) Multiple Myloma - starting chemo; Edna Kibbie (The Walter's family aunt/gr. aunt) - congestive heart failure; Melvin Walters (The Walter's family - father/gr. Father) Alzheimers; Erin Morgan (The Walter's family friend) CA; The Kuhl Family - prayers - personal & financial; Christine Harris' mother Pat - needs knee replacement; Christine Harris' sister Julie - Chron's disease; Marge Snoddy (Kam Boles friend/neighbor) MS, Diabetes, end stage; Dorothy Lloyd (Sheri Shea's mother) Alzheimer's; Jim Llyod (Sheri Shea's father) Parkinson's; Creston Walker(friend of the Damsgards & Cronins)18 yr. old - CA severe headaches; George Murphy (Barb Decker's mother's partner) Prostate CA in FL.; Jack Taylor (Loree Kohrs Friend) Brain Tumors - Surgery; Edith Walters (Terry Walter's mother) knee replacement / rehab; Ruth Wight (Elizabeth Laurvick's mother)back pain, bulging disc - assisted living care; Aspen (friend of a friend-Joy Damsgard) bike acc. - 5yrs. old - lost her eye; Ernie Wight (Elizabeth Laurvick's father) Bladder CA - assisted living center; Jeff Bleyle - broken right leg - possible surg. next week - playing church softball; Maima Sehkar - young girl from Liberia - lye drinking acc.; Choy Fong (Ken Fong's mother) Bladder & Pancreatic CA; Jeff Bryden (Kay Swanson's brother)returned to Casper WY; Loretta McFarlin (Meera Goel's friend's mother) Stage 4 CA; Richard McFarlin (Meera Goel's friend's father) Heart Attack-ICU; Sharon Oliver's father - collapsed-pacemaker implanted; John Williams' mother - ?; Bob Lanham (Ann & Jan Holly Lanham's son/brother) stroke @ Rose Med.; Holly Lanham - prayers for her husband Bob - stroke; Frances Boles (Tim Boles' mother) cellulitis - leg surg.; Steve Riley's mother - Lung CA -possible angioplasty or heart bypass Natalie Murrow - heart failure - on transplant list; Eldon Ashbaugh (Marilyn Ayers' friend) breathing difficulties- possible allergic reaction; Susan Scott (Mary Kuritani's daughter) Heart surg. -rehab- Sable Care Center; Jennifer Hopwood (Ed & Eileen Law's D-in-L) severe anemia - end of pregnancy; Blake Mara - heart surg. 7-18-05 Pres/St.Luke's Hosp. 13 yrs. Old; Karin Wesson - Bell's Palsey - pray for patience & healing; Andy Bingaman (friend of Joy Damsgard) possible Lymphoma

Ministry Opportunities – August 2005

Prayerfully consider *your* part in St. Luke's!

"The gifts he gave were that some would be apostles, some prophets, some evangelists, some pastors and teachers, to equip the saints for the work of ministry, for building up the body of Christ, until all of us come to the unity of the faith and of the knowledge of the son of God, to maturity, to the measure of the full stature of Christ."

Ephesians 4:11-13

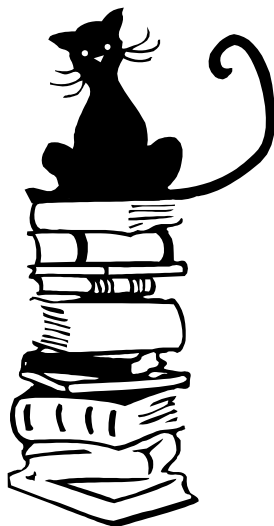


Adult Librarian: We need help organizing our Adult Library located in the conference room. It would be a gift to many! Contact Lynda at 303-791-0659x20.

Computer Input:

The church staff could use some help with simple input for our Data-Base. Hours are very flexible and we provide **chocolate!** Please contact Lynda Fickling at 303-791-069x20. *Some computer knowledge helpful.*

Ushers: Assist in the weekly worship service by ensuring worshippers are attended to before, during and after the service. Inviting those who would enjoy serving on this team to contact Jim Freeman 303-683-9832 or Greg Nolder 720-344-0566



in being invitational~by just offering a warm handshake and sincere

"Welcome". We are the hosts and our mission is to make our guests

(and members) feel at home. Greet on rotating Sundays either 8, 9:30 or 11. We are looking for people to cover the front door, and **both** side doors. Need a BIG team!! Contact either Karmie Hilleary 303-683-4696 or Lisa Williams 303-303-683-7056



Guest Service Station: Information central for St. Luke's! Great way to meet people and be helpful by answering simple questions, give direction to classrooms... all in all, be our minister of concierge! Choose to serve one Sunday a month (at the service convenient to you) 30 minutes prior to the service time. Please contact Lynda Fickling at 303-791-0659x20

Welcome Team: Looking for friendly, outgoing people to serve on this team whose mission is to welcome friends who have been visiting St. Luke's for awhile. Drop off our welcome package and say hello! No experience necessary, you only need to be willing to serve! Please contact Dee Duncan at 303-471-6685 or Lynda Fickling at 303-791-0659x20

"...serve one another with whatever gift each of you has received."

Greeter: Possibly the easiest, but most important job in our church! We are the first step

St. Luke's United Methodist Church invites you to find new life through Jesus Christ. Engage your heart and mind within a community of faith that seeks to integrate scripture, tradition, reason and experience. Wherever you are in your life, you will be accepted and encouraged to grow spiritually, live relationally and walk in mission, as you relate your daily life and your faith. Join us in growing toward full

All articles, photos and notices for the Sept. issue of *The Chronicle* are due:

August 10th

For more information, please contact the church office

Phone: 303.791.0659

Fax:303.470.5615

St. Luke's Youth ext. 45

Childeare reservations: ext. 47

www.stlukeshr.com

Emergency

Janet Forbes: 303.241.9312

Dave Money: 303.932.1035

Pam Rowley: 720.348.1528

Sunday Worship Services.....8:00 a.m., 9:30 a.m., 11:00 a.m.

Sunday School Classes (adult, children & youth)

9:30 a.m. & 1100 a.m.

Nursery Available for all services

Staff

Rev. Janet Forbes Senior Pastor	ext. 13
Rev. Dave Money Associate Pastor	ext. 33
Pam Rowley Pastoral Care	ext. 32
James Ramsey Director of Worship & Arts	ext. 23
Carrie Mallery Associate Director of Music Ministry	ext. 35
Kay Coryell Assistant Music Director	ext. 43
Chris Wilterdink Director of Youth Ministry	ext. 14
Ann Smith Assistant Youth Director	ext. 19
Jenita Rhodes Director of Children's Ministry	ext. 27
Lynne Butler Pre-school Ministry	ext. 11
Kristina Linn Childeare Ministry	ext. 40
Lynda Fickling Director of Membership Ministry	ext. 20
Bonnie Funk Administrative Assistant	ext. 10
Carole Sue Woodrich Financial Treasurer	ext. 49
Tammy Heister Financial Secretary	ext. 16
Dan Kuhl Facilities Custodian	ext. 44

NON-PROFIT ORG.
U.S. POSTAGE
PAID
PERMIT #7
LITTLETON, CO

St. Luke's UMC 8817 South Broadway Highlands Ranch, CO

The Chronicle

St. Luke's UMC Ministries