



The Chronicle

A NEWS & INFORMATION EXCHANGE FORUM

Sept. 2005

My search for a Church.....

Going to church was a Sunday ritual when I was growing up. I grew up in a large Catholic family and attended Mass and Sunday School every week. As I grew older, my desire to attend church became less important as I was trying to settle in at school and in my life. I only made it to church a few times a year, if I was lucky. Now years later, my desire to become closer to God, became a priority. After we moved to Colorado and our son was born, I began my search. It became very important for me to raise him belonging in a church and knowing God. After attending services at numerous churches, I gave up. They were either too crowded, too unfriendly, or not my style. A friend of mine, Carl, had told me about his church and I decided to give it a try. The first time I walked in, I was so surprised how friendly everyone was. I was immediately greeted at the door and left thinking what a nice church it was. Soon after, I went through some

Continued on page 10

Your chance to sign up for the Pumpkin Patch is here! Check in with Chris or Ann, or find the sign up sheets in the Fellowship Hall to add your name to the schedule. Shifts are two-hours long. Youth and adults, if you work 15 hours, you'll receive a \$100 credit towards next year's mission trip, and you can earn \$50 for working 8 hours. Remember that your parents can donate time to your cause (if they don't go on a mission trip themselves), so sign up to work the patch as much as you can!

Our Fall Kick-Off Extravaganza on September 11th from 6 – 8 pm. Parents are invited along with their youth. Get information on the upcoming activities for the year and meet our incoming class of 7th graders. Dinner is provided, as well as sign ups for the Pumpkin Patch!

<i>Stephen Ministry</i>	2
<i>Around St. Luke's</i>	3
<i>Thought's from Fred</i>	4
<i>Youth</i>	6
<i>Prayer Concern's</i>	10
<i>St. Luke's Classified</i>	11

Con't on page 9



ST. LUKE'S BEGINS APPRECIATIVE INQUIRY PROCESS

If you want to build a ship, then don't drum up men to gather wood, give orders, and divide the work. Rather, teach them to yearn for the far and endless sea.
-Antoine de Saint-Exupery

APPRECIATIVE INQUIRY is coming to St. Luke's as the vehicle for congregational futuring. Appreciative Inquiry is based on the idea of discovering what works and gives life to an organization and then building the organization on these life-giving properties. The model is based on the premise that organizations change in the direction in which they inquire. A church that attempts to appreciate what is best in its community will discover more and more that is good. It can then use these discoveries to build a new future where the best becomes more common.

David Cooperrider, the founder of AI (Appreciative Inquiry) describes it this way:

More than a method or technique, the appreciative mode of inquiry is a means of living with, being with, and directly participating in the life of a human system in a way that compels one to inquire into the deeper life-generating essentials and potentials of its existence.

Appreciative Inquiry is a generative process that uses guided conversation and strategic visioning to unleash the positive energy within the church to enable Christ's work to be done in the world.

The AI model at St. Luke's will use a process of interviews to discover people's best experiences and use these experiences as a basis for imaging a future and designing the processes and structures that will make the imagined future a reality. This imagined future, however, is not just a fantasy because it is grounded in the experiences of St. Luke's itself. We will discover God's unique gifts to this congregation and grow in the direction of our giftedness.

United Methodist minister and pastoral counselor, Rev. John Lee, will serve as our consultant to lead us in the Appreciative Inquiry process. A broad cross-section of persons will be invited to participate in interviews during August and September. The Appreciative Inquiry Conference will be Sunday, September 25.

As you prepare for the Appreciative Inquiry interview, think about St. Luke's and ask yourself the question: What is the highest, most spiritual, most transformative moment in my faith journey at St. Luke's?

Then, imagine...what if we lived more and more and more into these moments...?

Rev. Janet

SERMON LIBRARY AVAILABLE ON WEB SITE

Many thanks to our webmaster, Ken Fong, for creating a link to the Sermon Library at

www.stlukeshr.com

You are invited to access the worship conversation from home, while you travel, or to share with friends and family.

CHRISTIAN EDUCATION –
IT'S FOR LIFE!
SUNDAY MORNING CLASSES

Christian Connections

This adult Sunday school class uses an open discussion format for 3-10 weeks on both topical and spiritual studies. We are engaged in ongoing mission projects, social gatherings, and support each other through friendship and prayer.

Fall Study: Making More of Life With Less: Seeking Humility, Simplicity, and Silence - August 28 – September 25

Sunday at 9:30 a.m. in Classroom B

Contact: Dave Laurvick 303-973-1591
or Scott Wesson 303-683-0196.

Study of Christian Thought

Guided by the principles of Scripture, Experience, Reason, and Tradition, this class is designed to “cover what you missed in Sunday school and confirmation.” This class promises to challenge our beliefs, expand our understandings, and examine how we, as Christians, arrive at where we are today.

Fall Study: The World's Religions

Sundays at 9:30 a.m. in Classroom A

Contact: Ann Roadarmel 303-792-5110

Christianity and Contemporary Issues (NEW)

This class will focus on issues of society in dialogue with the Christian faith. The Social Principles of the United Methodist Church will serve as a reference. This class will meet three Sundays a month in order to be invitational to the Chancel Choir.

Sunday beginning September 11 at 11:00 .m.

Contact: Kory Nelson and Kristi Dale

MID-WEEK CLASSES

Disciple Bible Study

Disciple Bible Study is an in-depth, 9-month program to help people develop a biblically informed faith.

Through individual study and weekly group discussion and reflection, Disciple transforms lives and equips people to faithfully live as disciples of Christ. Disciple I: Becoming Disciples Through Bible Study

Disciple I tells the biblical story from Creation to Revelation.

Thursday mornings, 9:15 – 11:15

Sunday evenings, 6:30 – 8:30

Wednesday evening, 6:30 – 8:30

Disciple II: Into the Word Into the World

Disciple II, for graduates of Disciple I, focuses on Genesis and Exodus in the Old Testament and Luke and Acts in the New Testament.

Thursday mornings, 9:15 – 11:15

Disciple III: Remember Who You Are

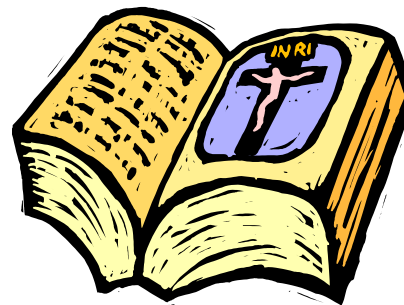
Disciple III, for graduates of Disciple I and/or II, covers the Prophets and the letters of Paul.

Sunday evenings, 6:30 – 8:30

Jesus in the Gospels

For the second year, for graduates of Disciple I, we offer Jesus in the Gospels, the first study in Disciple Second Generation. At the heart of this in-depth study of the four portraits of Jesus is the question, Who is this Jesus? Participants can expect a fuller understanding of the Gospels and a greater appreciation for the complexity of Jesus' time, place, and Jewish tradition.

This class can expect to be confronted by a Jesus who calls for deeper allegiance and to be surprised, challenged, summoned, and comforted by this same Jesus.



Thursday mornings, 9:15 – 11:15

Wednesday evenings, 6:30- 8:30

Christian Believer (NEW)

Doctrine is the church's answer to questions that grow out of human life in general and out of Christian experience in particular.

Christian Believer is a 30-week Bible study utilizing readings from the writings of Christians, ancient and modern, on the great doctrines of the Christian faith. Christian Believer assumes that most Christians want to know what the church teaches and how it makes a difference in their own lives. Another way to say this is that Christian Believer addresses the connection between believing and living.

Wednesday from 6:30 – 9:00

Little School will be back in session!

Parent Open House - Sept. 1 - 6 PM

Children Open House - Sept. 6 - 10 - 11:30 AM

First Day of School - Sept. 7th 9AM (MW/MWF/TWTH)

First Day of School - Sept. 8th 9AM (T/TH)



Little School is looking forward to seeing you

Just dial 303-791-1982....that's all!

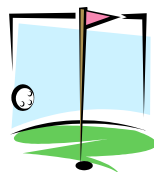
Thanks so much! Blessings, Ms. Kay

Talk about your great first impression! Our new front entry is now even more inviting thanks to our new custom carpeting! Please join the Trustees team in extending appreciation to the Women of St Luke's for their fundraising efforts and their committee chaired by St. Luke's own multi-talented soloist and project manager Joy Wardroup. As a result of their efforts our entry not only looks great, its much safer for everyone as they pass through our front doors! Their next project will be to continue to work to secure funds for re-carpeting the fellowship hall, classrooms and main hall. With your support these areas can be updated with similar quality and industrial wearability floor coverings. Please watch for their programs and support them. Lastly, its back to school and time to select a great small teams season! Please consider joining the Trustees team with our new class this fall. If you're good with your hands or just willing to help, we have room for you. Please mark your calendar now and join our first fall meeting at 7PM in the 7/8th grade classroom downstairs on September 12 or contact Ken Fong to learn more. We have room for you here as we care for all of our rooms!

2nd annual St. Luke's UMC Invitational Golf Tournament

Saturday, September 24th

1:00 pm shotgun start

Highlands Ranch Golf Club**Fun, fellowship, food
& great prizes!!!**

For sponsorship information, volunteer opportunities and tournament information contact Daniel .

Watch the Chronicle for further tournament announcements & registration forms or check the website at: www.stlukeshr.com

DAVE CUPP JOINS THE STAFF AS DIRECTOR OF FINANCE

The Staff Parish Relations Committee and Finance Team are pleased to announce that Dave Cupp has accepted the invitation to serve on the staff team of St. Luke's as Director of Finance. Dave and Meryl are charter members of St. Luke's. Dave currently serves at one of our lay leaders and the lay member to the Rocky Mountain Annual Conference. Dave brings many years of financial experience and accounting background, both with companies and as an entrepreneur. This 30-hour per week daytime position represents a transition in finance system oversight, reflecting the recent years of growth. We are grateful for the faithful leadership of Tammy Heister, Financial Secretary, and Carole Sue Woodrich, Treasurer.

Women's Night Out is here again! Join us on Monday nights at 6:30pm for fellowship and good food at the following restaurants:

- Sept. 19th, Buca Di Beppo – Aspen Grove
- Oct. 3rd ~Bennett's Pit Bar-B-Que – Park Meadows
- Nov. 7th ~Los Dos Portrillos Mexican Restaurant – Centennial
- Dec. 6th ~Candlelight Dinner at St. Luke's (*Sponsored by the "Women of St. Luke's")
- Jan. 9th ~Wang's Gourmet Inc. – Littleton
- Feb. 6th ~The Elephant Bar – Greenwood Village
- March 6th ~Celtic Crossing – Castle Pines North
- April 3rd ~ Bisetti's Restorante – Highlands Ranch
- May 1st ~ Montana Grill – Aspen Grove

The more the merrier, bring a friend or two! Please call Lynda 303-791-0659x20 for any questions.
Bon Appetite!

ST. LUKE'S MEMBER DIRECTORY ANNOUNCEMENT

New directories and directory updates are now available as follows:

- **New member families** who were photographed in November/December 2004 -- please pick up your **entire directory** (binder plus old and new inserts) in the Narthex this Sunday, August 21. After that, they will be in the church office labeled with family names.
- **Existing member families** who were photographed in 2003 and already have directories -- please pick up your **updated pages** (to insert into existing binders) in the Narthex this Sunday, August 21. After that, they will be in the church office.

All other member families who want a directory but are **not pictured** in either in the 2003 photo section or the 2004 photo updates section, **please purchase your directory for \$5.00** in the Narthex this Sunday, August 21. After that, they will be available for purchase in the church office

Winter Survival Kits for the Homeless

On Sunday Oct. 23, 2005 the Mission's committee will be sponsoring a program for Winter Survival Kits for the Homeless of Denver. We will be working with Colorado's Coalition for the Homeless on this project. We will have collection boxes out to collect items for these kits. We need personal hygiene products, travel size, such as soap, shampoo etc. Also we need gloves, hats etc. Please see our display for a complete list of items that we will need to put these kits together.

On Sunday Oct. 23, 2005 we ask everyone that can attend to please join us and put together these kits. Parents please bring your children. This is an excellent way for them to get involved.

We will start at Noon immediately after the 11 AM service. We will service lunch and then put the kits together.

So don't forget, help us in this collection drive. And then join us in putting together these kits. Two years ago we put together almost 400 kits. We would like to match or surpass that number this year.....

JOIN US IN HELPING THE
HOMELESS IN

September

- 9/4 – No SLY Activities (Labor Day)
- 9/11 – Regular SLY AM (9:30 am)
SLY PM Kick Off (6 – 8 pm)
- 9/14 – SLAM (6:30 – 8:30 pm)
- 9/18 – Regular SLY AM
Youth Disciple Begins (11 am)
SLY PM – Mission Trip Reports/
Mile-Buyer Dinner
- 9/21 – SLAM
- 9/25 – Regular SLY AM
Regular SLY PM
- 9/28 SLAM

October

Pumpkin Patch Oct 1 - 31

- 10/2 – SLY AM Worship
SLY PM District Worship
- 10/5 – SLAM
- 10/9 – Regular SLY AM
SLY PM – Jazz @ St. Luke's Con-
cert, 7 pm
- 10/12 – SLAM
- 10/16 *Fall Festival 10 am – 2 pm*
- 10/16 –Regular SLY AM
Regular SLY PM
- 10/19 –SLAM
- 10/23 –Regular SLY AM
Regular SLY PM
- 10/26 –SLAM
- 10/30 –Regular SLY AM
Regular SLY PM

A message from Ann



The 30-Hour Famine is an activity sponsored by World Vision to give young people across the country an opportunity to experience hunger, learn about hunger around the world and raise awareness of hunger related issues. On August 6-7, twenty-five youth from St. Luke's participated in the 30-Hour Famine.

As a touching and meaningful end, the group "broke the fast" with communion at the 11:00 service on Sunday.

The group performed two community service projects during the day – cleaning up at the Sand Creek Waterway for Hands on Denver and sorting food pantry and clothing bank donations for Denver Urban Ministries (DenUM). One crew also dug the trench between the water source and the fountain in the back area of St. Luke's.

Other activities helped the Youth see the hard choices that must be made when money is tight. Every Youth, limited with \$5 cash, bought an outfit at Goodwill that they wore for the rest of the day, and teams of Youth were given \$20 cash to purchase all items provided by DenUM to feed a family of four for four days. The clothes and food were all donated to DenUM after the Famine.

The 30-Hour Famine provided the participating youth with an opportunity to learn more about themselves, each other and the reality of hunger. Nearly \$1,000 was raised from sponsorships and collections made on Sunday.

To learn more about the day's events, check out the pictures available soon on the Youth page of the St. Luke's web-site.

To everyone who participated in any way – through your donations, prayers or participation – thanks for making a difference!



Chris' Corner

Time Really Flies...

Has it been a year already? With no time to celebrate my first anniversary, we're gearing up for our fall schedule. So as I worked on the schedule a little bit, I began to remember back to what it was like at the beginning...

The Kick-Off – Last year at this time, we had 50 youth and their parents come to our Fall Kick-Off, which was my 3rd Sunday here. I expect more this year! We have the ministry fair the morning of September 11, and our 2005 Fall Kick-Off is that evening beginning at 6:00. We want all youth and at least one of their parents to attend that night so we can give you a really solid idea of the ministry that we do with the youth of St. Luke's including a

look at all the different programs and experiences we create specifically for your youth. I want to extend a special invitation to the incoming 7th graders and their families, I know I've met a few of you during our summer events, but I know there are more of you out there!

Bible Study – No mid-week Bible Study had been offered for 6 months when I began, and last year Karin Wesson and I split a Wednesday Night Bible Study called St. Luke's At the Movies (SLAM). SLAM will continue this year on Wednesday nights from 6:30 – 8:30 pm, coinciding with many other Wednesday Night Live programs. Each week, we view and discuss the religious significance of movies recently released by pop culture. A few of last year's titles included: Elf, Napoleon Dynamite, and Pirates of the Caribbean. This fall we will also be launching Youth Disciple for upper-classmen, which will take place during the 11:00 services for 8 weeks in the fall and spring. Classes start on September 18 lead by Elizabeth Bauer and myself and you can sign up today!

Youth Music – One of the goals laid down by the Youth Leadership Team last year was to create and improve youth music ministries at St. Luke's. With the help of Jim Ramsey and Kay Coryell, the Youth Jazz Band and Youth Choir were reborn and energized with dedicated staff and volunteers behind them. Their most memorable performance probably happened during Youth Sunday, where both groups performed several songs in the service. The Jazz Band and Choir are again up and running and there is room for more youth to join! Puppet ministry will start up with opportunities for youth, expanding the performance ministries available to youth even further, and we are also hoping to start a youth band (guitars, bass, drums, etc) this year! You can contact Kay Coryell for more information on these exciting ministry opportunities.

Youth Staff – Martha Boon had done a fantastic job of sustaining the program before I started, and because we are blessed with such active youth (Confirmation Class of 43 youth, 59 youth on summer mission trips) we were able to bring Ann Smith on as another staff member directly involved in creating ministry opportunities for youth. With her on board, we launched two new small groups for youth, Shortcuts To Manhood (STM) and Girls' Enrichment Ministries (GEMS) for the boys and girls of our group respectively. These groups met with such success that we will continue them into the school year and beyond.

Pumpkin Patch – The Patch has been a tradition at St. Luke's as far back as I hunt in youth ministry records, and last year we had some ups and downs, but had a very successful year. The money we raised in conjunction with other fundraisers like flocking allowed us to take 2 awesome summer mission trips to Wichita Falls, Texas and Caguas, Puerto Rico. We are again gearing up for this year's patch, and we would love to have you, your family, and your friends sign up to help man this year's patch. Youth, remember that when you work 15 hours, you get a \$100 mission trip credit. Look forward to the return of our "orange lawn" with our first delivery on October 1 at 9 am and the Fall Festival on October 16!

There is room for you with all these incredible youth ministry opportunities! Adults and youth, I pray that you will take part in SLY Ministries in the coming school year. Thank to all the adult volunteers that made a difference in the lives of our youth in the past year. Adults particularly, we need your presence and help! The strength of our program springs from the incredible life-experiences that our adults share with our youth. If you'd like to serve along side other adults in youth ministry, had a piece of this article inspire you, or had an adult mentor when you were a teenager, please contact me or Ann to find out how you can become a part of this ministry of today!

Blessings,

Chris Wilterdink

Director of Youth Ministries

James Ramsey,
Director of Worship and the Arts
 303-791-0659 ext 23

Carrie Mallery,
Associate Director of Music
 303-791-0659 ext 35

Kay Coryell
Assistant Director of Music
 303-791-0659 ext 43

Music Ministry Program

Music Ministry ensembles at St. Luke's wish to extend an open invitation to anyone who desires to share their musical gifts and talents for the upcoming year. Each ensemble is committed to the ministry at St.

Luke's through practice, fun and fellowship. Most ensembles will begin in September and continue through May as a typical season. If you have any questions regarding any of the music ensembles, please don't hesitate to contact me by phone or by email.

Otherwise, I look forward to seeing current members as well as new members very soon who want to share in this spiritual gift we call music-

James Ramsey

Brass Ensemble

The Brass Ensemble is active in Sunday morning worship services throughout the year either performing or accompanying choirs. The instrumentation includes Trumpet, French Horn, Trombone, Euphonium and Tuba. There is no age limitation, just the desire to make great brass music. The music level of the ensemble ranges from easy to medium difficulty. **Meeting Time/Place:** Rehearsals begin Saturday, August 27 from 9:00-10:00am in Asbury
Music Team Coordinator: Erik Wangsness 303-884-0358

Chancel Choir

The Chancel Choir rehearses for and participates in Sunday morning worship services regularly during the year. The choir sings a wide variety of music ranging in diversity from traditional to contemporary sacred. Whether you've had a lot of singing

experience or you've had a little and would like to learn more, there is a place for you in the choir.

Meeting Time/Place: Rehearsals begin Thursday, September 8th from 7:30-9:00pm in Asbury

Music Team Leader and Director: James Ramsey 303-791-0659 ext 23

Cherub's Choir (3yrs-K)

The Cherub's Choir is a music and movement program for children 3 years through Kindergarten. The children learn about Christian values through song in a nurturing environment and develop motor skills through movement and playing instruments. They also perform for a few Sunday worship preludes throughout the year. Parents are encouraged to attend rehearsals with their children.

Meeting Time/Place: Begins September 14 and meets every Wednesday from 6:30-7:15pm in the David open area

Music Team Directors: Stacey Baird 303-470-5270, Nancy Betts and Suzanne Sharpe

Children's Tone Chimes

Children, grades 4-6 are invited to participate in this fun and musical WNL program. No experience needed. We will explore music by playing tone chimes.

Meeting Time/Place: Begins September 15th; Wednesday nights 7:00 - 7:45 in the Asbury Music Room

Contact: Kay Coryell 303-791-0659 ext 43

Children's Choir

The Children's Choir includes children 1st through 6th grade. They rehearse Sunday mornings to sing the prelude for Sunday morning worship four to five times a year and learn Christian principles through song.

Meeting Time/Place: Begins September 11th and meets every Sunday from 8:30-9:15am in Asbury

Music Director: Kay Coryell 303-791-0659 ext 43

Flute Ensemble

The Flute Ensemble participates in Sunday morning worship services approximately once every month. If you want to dust off the old flute and get back to playing again, now is your chance. No age limit required. The music level of the ensemble ranges from easy to medium difficulty.

Meeting Time/Place: Begins September 10th; Saturdays 8:00 - 9:00am in Asbury

Music Team Coordinator: Ruth Smith 303-683-0676

Grace Notes

Grace Notes is a small gospel choir ensemble that meets on Thursday evenings before regular Chancel Choir practice. They sing for services throughout the year. All are welcome!

Meeting Time/Place: Begins September 8th and meets Thursdays from 7:00-7:30pm in Asbury

Music Team Coordinator: Marge Harper 303-971-0672

Kidz Prayz I and II

Kidz Prayz I and II is an opportunity for children 1st through 3rd grade (Kidz Prayz I) and 4th - 6th grade (Kidz Prayz II) to participate in learning to sing and play instruments as well as have fun. The Kidz Prayz program is designed to develop cognitive skills by engaging your child in a variety of musical and movement activities. **Meeting Time/Place:** Begins September 14th and meets Wednesdays 6:15 - 7:00pm in Asbury

Directors: Kay Coryell and James Ramsey 303-791-0659

Mark your calendar now for these special selected upcoming events for 2005-2006

- **Jazz at St. Luke's Benefit Concert** - Sunday, October 9th at 7:00pm
- **Fiddler on the Roof** - November 4th & 5th at 7:00pm and November 6th at 3:00pm
- **St. Luke's Christmas Cantata** - Sunday, December 4th at 9:00 and 11:00am
- **Sound of the Rockies Christmas Benefit Concert** - Thursday, December 8th at 8:00pm
- **Instruments at St. Luke's Benefit Concert** - Saturday, February 11th at 7:00pm
- **Ministers of Swing Dinner Dance** - Saturday, March 4th at 6:00pm
- **Drama Production TBA** - Friday, March 10th and Saturday, March 11th
- **Holy Week - Thursday, April 6th and Friday, April 7th - Godspell**
- **St. Luke's All Ensemble Benefit Concert** - Saturday, May 13th at 7:00pm

Ministers of Swing

The Ministers of Swing is a full complement Big Band and Jazz Ensemble that plays benefit concerts and dances throughout the year at St. Luke's and in the community. We have a lot of fun jazzin' it up or swingin'. The music level of the ensemble ranges from medium easy to medium difficulty.

Meeting Time/Place: Begins August 27th and meets Saturdays from 10:00-11:15am in Asbury **Director:** James Ramsey 303-791-0659 **Sonrise Band**

The Sonrise Band plays for the 8:00am Sunday morning worship service throughout the year. The music ranges from contemporary to gospel. **Meeting Time/Place:** Wednesdays from 7:30-9:00pm in Sanctuary **Music Team Coordinator:** Carrie Mallery 303-791-0659 ext 35 **St.**

Luke's Chamber Ensemble

All strings welcome. If you've ever played or currently play violin, viola, cello or bass, then this is the place for you. We meet on Saturdays and play chamber music for Sunday morning preludes. The music level of the ensemble ranges from easy to medium easy. **Meeting Time/Place:** Begins September 10th; Saturdays from 8:30-10:00am in the Sanctuary **Contact:** Mitchell Owens 303-683-4826

TinTinabulators Handbell Choir

The TinTinabulators Handbell Choir is a 5-octave handbell choir and rehearses every Tuesday to prepare for morning worship services once a month. All are encouraged who have the desire to get ringing again or want to learn how to ring.

Meeting Time/Place: Begins August 23rd and meets Tuesdays from 7:30-9:00pm in Asbury **Music Director:** Kay Coryell 303-791-0659 ext 43

Tone Chimes

The tone chimes is an extension of Wednesday Nite Live activities after Kidz Prayz II. The age level for the Tone Chimes is 4th - 6th grade. Increase your ringing ability and your music reading ability as well as have fun making music. **Meeting**

Time/Place: Begins September 14th and meets Wednesdays 7:00 - 7:45pm in Asbury. **Directors:** Kay Coryell 303-791-0659 ext 43

Youth Handbell Choir

This is an opportunity for youth, grades 7-12 to build their musical skills through ringing Handbells and to have lots of fun doing it. Come and have a great time!

Meeting Time/Place: Begins August 23rd and meets Tuesdays from 6:30 - 7:30 in Asbury **Contact:** Kay Coryell 303-791-0659 ext 43

Youth Jazz Band

Come swing with us! This group is for youth in grades 7-12 who play instruments. You're invited to "jazz" with us Sunday Evenings or Saturday mornings. No previous jazz experience required. Bring your friends—the more, the merrier! The music level of

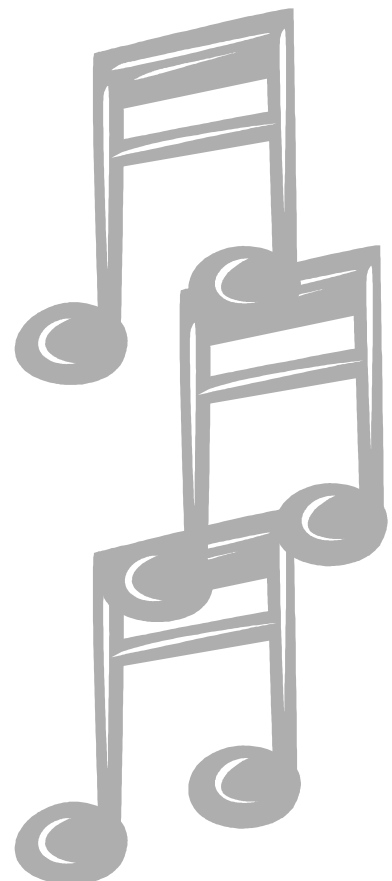
the ensemble ranges from easy to medium. **Meeting Time/Place:** Begins August 14th and meets Sundays from 4:00 - 5:00pm in Asbury **Contact:** Kay Coryell 303-791-0659 ext 43

Youth Choir

Youth in grades 7-12 are welcome to come and sing and have fun. No previous experience required only the desire to sing your heart out! We sing at Youth Worship services on Sunday evenings and occasionally for regular worship services on Sunday mornings. Bring a friend! **Meeting**

Time/Place: Begins August 14th and meets Sundays from 5:00 - 6:00pm in Asbury **Contact:** Kay Coryell 303-791-0659 ext 43

Coming Soon! St. Luke's Concert Band for all ages beginning on January 7th, 2006.



From front page

classes to become a new member. It was then that panic began to set in. I felt like I was cheating on my faith by choosing a Methodist Church instead of a Catholic church. Lynda Fickling was so patient with me during this time and let me take my time in deciding what to do. So, I went the search for a Catholic church to join. The only problem was, I felt like I did not fit in to the Catholic Church. I belonged at St Luke's. It was after this long journey that I decided St Luke's is my home and where I am most comfortable. My faith has not changed, I just have a new family.

Lesley Thompson

Joined May 2005

Thoughts from Fred

Anyone who knows me well, theologically, knows that I am very, very far from being a fundamentalist. However, a fundamentalist, even a hard-core one, and I, share a central conviction: the necessity for a rebirth. We describe it and view it differently. He thinks he is an absolute sinner, totally lost. He believes he got his "lostness" from Adam and Eve (whom I am sure never existed), but the story about them does provide an interesting metaphor. The fundamentalist believes his rebirth needs a specific intervention, with a lot of blood. Witness: Mel Gibson's "The Passion of Christ." I believe rebirth can come in more than just that one way.

Although I don't believe the Adam and Eve story is real history, it does suggest our human dilemma. Though we didn't "fall" (you can't fall from a condition that never existed), there was an incompleteness born into us when we came into this world. It is simply the condition of being human. We are born, not in sin, but with potential. We are human with a potential to experience a spiritual self, the Divine. Our potential for a complete life is realized as we learn to "die daily" (Paul: 1 Cor 15:31) to the human, to the ego, and then welcome and embrace the Spiritual. Or, as Paul wrote to the Philippians (2:5), "Let the same mind be in you that was in Christ Jesus." At that level the fundamentalist and I stand together. However, his route to that level is infinitely more complicated and intellectually compromising than mine. He strains to believe what rationally he knows isn't true.

I am getting to tithing. Born again people (real ones - either his way or my way), that is, people who die to self and live to Christ, people who have put on the mind of Christ, have little problem with tithing. Money has a way of capturing the essence of being human and less than spiritual, and therefore we need to "die" to that which is only our humanness, so we can be reborn to the Spiritual. This is a daily process which continues all life long, Till 79, at least, I know that personally. The more one lives in the Spiritual the less important the material (money) becomes. And tithing become automatic, a non-issue. The Christian "just does it."

I'll put it this way: your pledge to the church probably is more of an indication of your spiritual condition, than of your monetary condition. That might give a hint of where we need to grow. Let's get at it today, we really don't have that much time left.

Fred Venable, friend of St. Luke's

I'm very pleased to be named to this new position of Director of Finance at St Lukes. My educational experiences in accounting and finance plus many years of management and fiscal systems oversight will be most valuable in fulfilling the responsibilities of this new position in a professional manner that will reflect well for you and our church. I'm fortunate that these experiences have been with large companies as well as being an entrepreneur. My experience in creating and working with accounting systems, cash management and risk management will be useful.

I'm a life long member of the United Methodist Church and a charter member of St Lukes. During these many years of membership I've had the opportunity to serve in many capacities (Layleader, 3 building committees, etc) and participate in many other activities which gives me a great understanding of the support this new position needs to provide.

My job is to support our finance committee in identifying, perfecting and managing the finances for our church. This will include an immediate need of perfecting our current accounting procedures and creating new and useful financial reports. In the near future I want to provide opportunities for expanding our financial stewardship opportunities here at St Lukes to include other opportunities of financial support beyond the normal giving programs we are accustomed to. In so doing these things, church leadership, committees and departments will receive the information they need to make sound decisions regarding their responsibilities.

All of this means that in the long term we will be able to carry out our church mission and traditions to the fullest and best extent possible.

My goal is to use this article to provide you with interesting and informative information about what is going on with the financial program at St Lukes.

I'm your contact person when you have questions about your giving records or questions about our financial program in general. My position is a 30 hour commitment. The best time to call is from 8:00 to 11:30 Monday thru Friday or you may email me at Davec@StLukeshr.com.

In closing, I'm compelled to share with you this thought. When I was notified of my selection for this position, the first thing that came to mind was the dedication that Dorothy Day gave as our Financial Secretary as well as her dedication to the success and well being of St Lukes. For those who don't know, Dorothy was one of our charter members who for so many years spent untold hours keeping our giving records and making sure they were done "exactly" as they should be. During the many years I knew her, she lived a beautiful life full of dedication to her church. Personally, I miss seeing her around church very much. You should visit her memorial we have at the back of our church and say a little prayer of thanks. My hope and prayer is that I can come close to continuing her legacy.

Dave Cupp
Director of Finance

Our Mission:

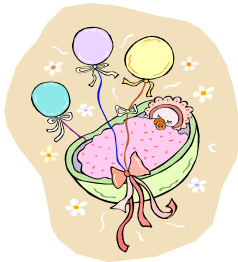
We welcome you to our Christian family, where we share life.

*Wherever you are in your faith journey,
You are accepted and encouraged to grow
spiritually.*

Join us in growing together toward full humanity

Through living the teachings of Jesus:

Love, Acceptance, Justice and Hope



New Arrivals

Madeline Elyce (E-leese) Sharpe
 July 29, 2005; 8lbs 9oz 21" long
 proud parents: Kenny & Suzanne Sharpe
 Keaton Milerowski
 Born 8/12/05 9lbs 11oz, 21 inches
 Proud parents Steve & Robin

Invitational
Relational
Missional

Prayer

To Terry Walters and family
 on the passing of his father,
 Melvin E Walters, August
 18, 2005



Journey to Servanthood.

"I am a servant of God. Jesus is my teacher, my friend. I live on a journey to serve my father as his son served him."

These words would not have come easy for me a few months ago, but a new journey has lit my heart and I am very excited to serve at St. Luke's. My relationship with God is deeper and stronger due to our wonderful Pastors, teachers/facilitators and friends (including my Disciple I class). You know who you are and I love you for inspiring and challenging me. You let me speak freely, expressing my opinion whether or not you agreed with me. That is the grace of St. Luke's. Now I am ready to serve as Jesus served, worshiping and celebrating my father, my God, not just on Sunday but every day of my life.

Where do I begin? In Ephesians 4:11-13, we are told how each of us have a gift to serve God, to create a whole body from many parts. This gift serves a unique purpose, no one has the same gift. Today I serve St. Luke's as I equip people to serve themselves. Encouraging you to attend worship, pray, take one of our many classes, ask questions, challenge yourself to grow and build your relationship with God. Experience his love and share this love as you serve others. You may grow to know Christ as you serve with that unique gift given to you as a teacher, care giver, musician, organizer, leader, our choices and roles are many in the body of Christ. To serve is not a job. It is a ministry.

Here at St. Luke's we offer many ministries for you to serve. I encourage you to begin by nurturing your spiritual desires and re-examine your relationship with God. Getting to know Christ as a friend and teacher. Serving will be your reward.

"I am a servant of God" ...as you are also. Won't you join me on a new journey?

Lynda Fickling

Director of Membership Ministry

Need help in Discovering your gifts, serving, connecting to small groups, classes? Contact me at 303-791-0659x20 or lynda@stlukeshr.com

Ministry Opportunities – August 2005

Prayerfully consider *your* part in St. Luke's!

"The gifts he gave were that some would be apostles, some prophets, some evangelists, some pastors and teachers, to equip the saints for the work of ministry, for building up the body of Christ, until all of us come to the unity of the faith and of the knowledge of the son of God, to maturity, to the measure of the full stature of Christ."

Ephesians 4:11-13



Children's Ministry: Serve with our most precious gift...our children. In order to have a successful program, we need everyone's help. There are many different ways to serve. Please contact Jenita 303-791-0659x27 or Lynne 303-791-0659x11

Church-Wide Ministry Team: We sponsor events throughout the year, which promote fellowship and fun for the entire St. Luke's community. Our season is heating up and we could use your help! Events on the calendar- Ministry Fair, Fall Hayride, Hanging of the Greens and our Annual Tree Lighting Ceremony. If you feel called to serve on this team, please contact David & Gretchen Armijo 303-791-0340.

Adult Librarian: We need help organizing our Adult Library located in the conference room. It would be a gift to many! Contact Lynda Fickling 303-791-0659x20.

*"...serve one another with whatever gift each of you has received."
1 Peter 4:10*

Ushers: Assist in the weekly worship service by ensuring worshippers are attended to before, during and after the service. Inviting those who would enjoy serving on this team to contact Jim Freeman 303-683-9832 or Greg Nolder 720-344-0566

Greeter: Possibly the easiest, but most important job in our church! We are the first step in being invitational~by just offering a warm handshake and sincere "Welcome". We are the hosts and our mission is to make our guests (and members) feel at home. Greet on rotating Sundays either 8, 9:30 or 11. We are looking for people to cover the front door, and both side doors. Need a BIG team!! Contact either Karmie Hilleary 303-683-4696 or Lisa Williams 303-303-683-7056

Guest Service Station: Information central for St. Luke's! Great way to meet people and be helpful by answering simple questions, give direction to classrooms... all in all, be our minister of concierge! Choose to serve one Sunday a month (at the service convenient to you) 30 minutes prior to the service time. Please contact Lynda Fickling 303-791-0659x20

Welcome

Team: Looking for friendly, outgoing people to serve on this team whose mis-



sion is to welcome friends who have been visiting St. Luke's for awhile. Drop off our welcome package and say hello! No experience necessary, you only need to be willing to serve! Please contact Dee Duncan 303-471-6685 or Lynda Fickling 303-791-0659x20

St. Luke's United Methodist Church invites you to find new life through Jesus Christ. Engage your heart and mind within a community of faith that seeks to integrate scripture, tradition, reason and experience. Wherever you are in your life, you will be accepted and encouraged to grow spiritually, live relationally and walk in mission, as you relate your daily life and your faith. Join us in growing toward full

All articles, photos and notices for the Oct. issue of *The Chronicle* are due:

Sept. 10th

For more information, please contact the church office

Phone: 303.791.0659

Fax:303.470.5615

St. Luke's Youth ext. 45

Childeare reservations: ext. 47

www.stlukeshr.com

Emergency

Janet Forbes: 303.241.9312

Dave Money: 303.932.1035

Pam Rowley: 720.348.1528

Sunday Worship Services.....8:00 a.m., 9:30 a.m., 11:00 a.m.

Sunday School Classes (adult, children & youth)

9:30 a.m. & 1100 a.m.

Nursery Available for all services

Staff

Rev. Janet Forbes Senior Pastor.....	ext. 13
Rev. Dave Money Associate Pastor	ext. 33
Pam Rowley Pastoral Care	ext. 32
James Ramsey Director of Worship & Arts	ext. 23
Carrie Mallery Associate Director of Music Ministry	ext. 35
Kay Coryell Assistant Music Director	ext. 43
Chris Wilterdink Director of Youth Ministry	ext. 14
Ann Smith Assistant Youth Director	ext. 19
Jenita Rhodes Director of Children's Ministry.....	ext. 27
Lynne Butler Pre-school Ministry	ext. 11
Kristina Linn Childeare Ministry.....	ext. 40
Lynda Fickling Director of Membership Ministry	ext. 20
Bonnie Funk Administrative Assistant.....	ext. 10
Carole Sue Woodrich Financial Treasurer.....	ext. 49
Tammy Heister Financial Secretary.....	ext. 16
Dan Kuhl Facilities Custodian.....	720-313-1956
Kay Swanson Director of Little School.....	303.791.1982

NON-PROFIT ORG.
U.S. POSTAGE
PAID
PERMIT #7
LITTLETON, CO

St. Luke's UMC 8817 South Broadway Highlands Ranch, CO

The Chronicle