

CAST & CREW BIOS:



Angela Alderson, Reality Strollers, Clerk, Feed the Birds Ensemble, Kite Ensemble

Angela has been a part of the Wesley Players for a long time. Her first show was *Godspell* in 2006. She is a music teacher in Cherry Creek at Peakview Elementary. She is grateful for this community and has had a terrific time doing this show. Anything can

happen is something that her students hear her say in one way or another all the time. Enjoy the show and believe that anything can happen!



Jenah Arsenault, Banks' Maid, Ellen

This is Jenah's second performance with Wesley Players having previously performed in *The Secret Garden* as a member of the ensemble. By trade, Jena is a traffic engineer but has always had a passion for theater. Outside of performing, you can find her adventuring in the great outdoors with her dog Korra, and her partner Trevor. She

thanks Wesley Players for creating such a welcoming and fun community.



Valerie Benavides, Reality Strollers, Clerk, Feed the Birds Ensemble, Kite Ensemble

Valerie is delighted to be performing in the ensemble in her first production with Wesley Players after spending many years raising her family. She has previously been a member of the Cherry Hills Choir and performed in the Ensemble of *Bye*

Bye Birdie. A lover of the Arts, she volunteers at the Denver Art Museum and is a regular ticket holder to the Colorado Symphony Orchestra. Thank you to this fabulous cast who has made me feel so welcome!



Chris Brendlinger, Statue, customer, Sweep

This is Chris' 22nd Wesley Players show. In 2014 her son convinced her to perform in *The Pirates of Penzance* with him, and the rest is history. She grew up dancing, so was familiar with the stage, but had never performed in musical theater. She fell immediately in love with this amazing

community, and is proud to call so many of these people her closest friends.



Jared Brendlinger, Transformed Character, Northbrook, Customer, Sweep

Jared is so happy to be on stage, once again, with his mom, Chris. From a brother in *Joseph and the Amazing Technicolor Dreamcoat* to Prince Adam in *Beauty and the Beast*, he loved playing a ghost in *The Secret Garden*, and is now thrilled to be in *Mary Poppins!*



Hannah Brown, Choreographer, Props Assistant

Hannah is excited to be back with the Wesley Players and choreographing *Mary Poppins!* Hannah believes movement is a language and every step tells a story. She is thrilled to help bring this story to life. Hannah studied vocal performance at the Lamont School of Music at the University of Denver where her passion for performing turned to a career in teaching. She has choreographed more than 20 musicals and taught numerous musical theatre dance workshops and summer camps around Denver. Some of her favorites choreography credits are *Joseph and the Amazing Technicolor Dreamcoat*, *The Little Mermaid*, *Seussical the Musical* and *Beauty and the Beast*. She is grateful to her husband, Doug and her son, Hudson for all their love and support!



Darren Chilton, Admiral Boom, Transformed Character, Clerk, Feed the Birds Ensemble, Kite Ensemble

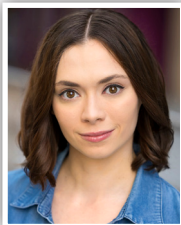
Darren is delighted to be in his 7th Wesley players production. He would like to thank this unique community of performers and artists for their tremendous love and respect for one another and commitment to their craft. It has been an absolute joy performing with you!



Cathy Collins, Reality Strollers, Clerk, Feed the Birds Ensemble, Kite Ensemble

Is a longtime WPTC player. It is especially magical that our whole family, Elise and Stephen share the stage for this supercalifragilistic expedalidous musical. In addition to being on stage Cathy helps

behind the scenes with costumes and props. In her spare time she enjoys reading, crafting, dancing and playing the piano. May you always remember that Anything Can Happen!



Elise Collins, Mary Poppins

Elise has performed with Wesley Players 14 times and is a passionate theatre director, performer, puppeteer, and advocate for safety and equity in the arts. Her favorite roles include Mary Poppins in *MARY POPPINS*, Meg in *LITTLE WOMEN*, Emily Webb in *OUR TOWN*, and Fight Director for *BEAUTY AND THE BEAST*. She's excited to direct *THE DINING*

ROOM with Wesley Players this spring (April 25th-27th). Outside of theatre, Elise enjoys partner dancing and playing board games. Special thanks to her family and partner, Shawn. "Remember, anything can happen, if you let it!"



Stephen Collins, Park Keeper, Customer, singer/puppeteer, Kite Ensemble, Scenic Artist

Stephen Collins, Ph.D., is a Professor of Communication at Pikes Peak State College. Stephen has degrees in Engineering Physics, Communication, and Theology. He avidly studies civil rights rhetoric in U.S. history, reads poetry every day along with his Nestle-Aland

Greek New Testament. He teaches ballroom dance and loves Shakespeare, astronomy, astrophysics, geology, geography, painting, walking, and running as well as practicing calligraphy. He is an avid fan of Liverpool and Wrexham football clubs and religiously follows NHRA drag racing. He enjoys acting, singing,

CAST & CREW BIOS:



and juggling, and has performed multiple roles with the Wesley Players including the King in *The King and I*, Thénardier in *Les Miserables*, and Ouiser in *Steel Magnolias*. He is a master puppeteer and has run puppet troupes for over 28 years. He does not know what he wants to be when he grows up; maybe a park keeper!



Marisa Dominguez, Katie Nanna, Reality stroller, Clerk, Customer, Judy, Kite ensemble, Communications
Marisa is ecstatic to be back on stage in this delightful production to help celebrate 25 years of Wesley Players! Marisa started performing in local community theatre when she was five years old and never looked back! She first joined Wesley

Players in Spring 2021 and some of her favorite WP roles to date include Sister Timothy in *Nunsense: the Mega Musical*, one of the Major General's Daughters in *The Pirates of Penzance* and Monsieur D'Arque's assistant in *Beauty and the Beast!* Marisa also enjoys being on the marketing team for Wesley Players Theatre Company, where she mainly helps out with all of our social media! Lastly, she would like to thank you, our audience, for coming to support local community theatre!



Natalie Fitch, Transformed Character, Mary Poppins Body Double, Customer, Sweep 3

Natalie is so excited to make her debut with the Wesley Players! She has appeared in several productions including *The Lion King*, *All Shook Up* (Sylvia U/S), and *Matilda* (Miss Honey). In addition to theatre, she loves studying voice and learning diverse styles (legit, pop, belting). She sends a huge thank you to this welcoming cast and crew, and so much love to husband Kyle, Barrett, June, and all of her family!



Rachel Flesner, Mrs. Brill

Rachel Flesner is back for her sixth Wesley Players show and is thrilled to bring her love of *Mary Poppins* to life playing Mrs. Brill. When she isn't dusting or tidying up on stage she enjoys singing in choirs, spending time with her family and dog, watching sports, and managing a small but mighty team at Visa. She would like to thank you for supporting community theatre and can't wait to see you at another future show!



Dyani Galligan, Queen Victoria, Customer, singer/puppeteer, Sweep

Is honored to be a part of the WPTC Board of Directors, and to see so much growth and enthusiasm within the organization. Favorite roles are mom to Saiorse and Tiernan, Annie in *Dear Edwina* (come see it again in June!), Marmee in *Little Women*, Judas in *Godspell*, Mrs. Cratchit in *A Christmas Carol*, the musical, Lumiere in *Beauty and the Beast*, and most recently as an ensemble member in *The Secret Garden*.



Tiernan Galligan, Statue, Customer, Sweep

Tiernan has been performing with WPTC since he was 7, and he has loved the various roles he has played like Winthrop in *The Music Man* as well as the opportunity to play french horn in the pit orchestra. He is grateful for the opportunity to perform with his family in another Wesley Players performance.



Roberta Hamilton-Griggs, Artistic Director/Co-Producer, Communications, Props Assistant

ROBERTA HAMILTON-GRIGGS has been performing in and directing musicals, plays, commercials, and operas since she was a child in her backyard, telling her sisters where to move and how to sing to *Jesus Christ Superstar*. Some of her favorite performances have been Audrey in *Little Shop of Horrors*, Viola in David

Amram's opera, *Twelfth Night* (conducted by David Amram), Maggie in *A Chorus Line*, Laetitia in Menotti's *Old Maid and the Thief*, and Mother in *Night, Mother*. Memorable performance experiences include working as a singing telegram artist (ask her about having Ben Vereen sing to her while she was wearing a yellow bird costume!) and busking on the streets of Europe for three months with her soon-to-be husband, (and current spouse of 32 years) Patrick Griggs. She has enjoyed a career of performing and developing amazing life-long friendships at Littleton Town Hall Arts Center, Country Dinner Playhouse, The Arvada Center, Boulder's Dinner Theatre, and Aspen's Crystal Palace. She has also directed and produced well over 100 plays, musicals and operas including *Starmites*, *Seussical*, *the Musical*, *Fiddler on the Roof*, *Peter and the Starcatcher*, *Beauty and the Beast*, and *Little Women, the Musical*.



Denton Hanson, Transformed Character, Von Hussler, Feed the Birds, Customer, singer/puppeteer, Kite Ensemble, Sweep, Poseiden, Set Crew

Denton is back on stage with the Wesley Players and hopes you're discovering as much joy watching this production as we did making it. He is always grateful for the opportunity to bring music, emotion, and high energy to the room as

well as share the stage with his amazingly talented children. It will be an absolute victory if you find yourself humming "supercalifragi-something" for the days, weeks, and months to come!



Hazel Hanson, Jane Banks

Hazel is overjoyed to bring to you her portrayal of Jane Banks in this production of *Mary Poppins!* A seasoned veteran of the stage, she adds this character to the numerous roles in Wesley Players and PAA. She hopes you enjoy the show and it brings joy to everyone who experiences it.



Liza Hanson, Suffragette Lady

Pastor Liza Stoltz Hanson is thrilled to share the stage with her family, and to share the word of the Suffragettes-even if for just a moment.

CAST & CREW BIOS:



Ruby Hanson, *Penguin, Feed the Birds Ensemble, Toy, Kite Ensemble*

Ruby is delighted to be bringing her high energy and delightful smile on stage once again with the Wesley Players! When not on stage she enjoys playing with friends and speeding around the soccer field under the name Ruby "Jets" Hanson!



Brody Hartmann, *Robertson Ay*

This is Brody's third performance with Wesley Players, having joined the Players for *Broadway on Broadway* and *The Secret Garden* in 2024. Prior to being in Wesley Players, he has been in many musicals, including *Beauty and the Beast*, *Legally Blonde*, *The Addams Family*, and *The Music Man*. He wants to truly thank you for being

here and supporting local theater and wants to apologize in advance for the fact that you might have "Spoonful of Sugar" stuck in your head until the end of time.

Sarah Hollyman, *Penguin, Toy, Kite Ensemble*

Sarah is thrilled to be performing in her fourth show with the Wesley Players. Sarah loves spending time with all the cast and crew, both old and new, and she enjoys expanding her knowledge of performing.



Erin Kubat, *Sound Design*

Erin has worked on over 20 shows as a sound designer, engineer, and technician. Recent production credits include Shakespeare's *R&J* (DU), *Rent* (DU), *A Christmas Carol the Musical* (Wesley Players), and *The Curse of Barrow Port* (Fathomless Series, Denver). She will be graduating from the University of Denver

in June with majors in Theatre and Japanese, and minors in Mathematics and Chemistry.



Madeline LaMee, *Transformed Character, Customer, Sweep 4*

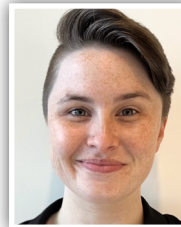
Engineer by day and theater nerd by night, Madeline is psyched to be applying her creative talents to her 3rd Wesley Players show. Though she mostly did tech the last two shows, this time she is on stage tapping her heart out AND lending her engineering skills to the technical magic.



Spencer Lamoreaux, *Mr. George Banks*

Spencer Lamoreaux is excited to be a part of Wesley Players again, having previously appeared in multiple productions including Major Holmes in *The Secret Garden*, Ben Avon in the Reader's Theater version of *Much Ado*, *A Christmas Carol* and *Broadway Under the Stars*. Spencer is from Utah where, after loving theater his whole life, he

started acting six years ago.



Rachel LaRue, *Transformed Character, Clerk, Customer, Valentine, Sweep*

Rachel LaRue (Valentine) is poppin' back in with Wesley Players after recently playing Le Fou in *Beauty & the Beast*, and Ghost of Christmas Past in *A Christmas Carol*. Another favorite recent role was Princess Winnifred in *Once Upon a Mattress* at Littleton UMC. Outside of performing, Rachel develops connected planning tools for Dexcom using Anaplan, and spends time with her husband Chad & their 3.5 year old son. Thank you cast & crew for another amazing, rewarding whirlwind of a show!



Julie Lehrer, *Birdwoman*

Julie is honored to be joining the cast of *Mary Poppins* and Wesley Players for the first time! She has enjoyed being involved in theater most of her life playing such roles as Maria in *The Sound of Music* and Yum Yum in Gilbert and Sullivan's *The Mikado*. For years, Julie has also been involved in Young Life's annual production of *Broadway to Africa* performed every June to benefit Young Life camps in Africa and the Middle East.



Chris Lucia, *Set Director*

instagram @ _nimblewizard



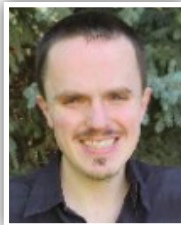
Jenn McMahan, *Mrs. Winifred Banks*

Jenn McMahan is thrilled to continue performing with the Wesley Players this season. She previously appeared in *The Secret Garden*, *A Christmas Carol*, *Beauty & the Beast*, and Readers Theater *Much Ado*, as well as *Broadway Under the Stars* for the past two years. She is so happy to be part of the Wesley Players family along with her husband, Spencer, and her VanBeek cousins.



Christa Nelson, *Transformed Character, Clerk, Feed the Birds Ensemble, Doll, Kite Ensemble*

After being with Wesley Players for many years, Christa is enjoying being a part of *Mary Poppins*. Favorite past roles include Crutchie from *Newsies*, Marmee from *Little Women*, Elphaba from *Wicked*, Ayah from *The Secret Garden*, and Wendy from *Peter Pan*. When Christa is not performing you can find her playing with her dog Nya, collecting antiques, or spending time in the mountains at one of her Nana's favorite Georgetown spots. Her pet sitting business called "Baby steps" keeps her very busy. She also loves archery and studying history, especially Egyptology.



Rick Newell, *Reality Strollers, Clerk, Feed the Birds Ensemble, Mr. Punch, Kite Ensemble, Board of Directors*

Rick Newell is thrilled to be a part of another Wesley Players Theater Production with *Mary Poppins The Musical*. He is excited to be in the ensemble and also playing Mr. Punch. Some of the shows he has been in with Wesley Players are *The Pirates of Penzance*, *Guys and Dolls Concert Version*, *Little Women*, *A Christmas Carol*, and *Beauty*

CAST & CREW BIOS:



in *The Beast*. I have also done *42nd Street* with Englewood Summer Drama Program and *Once Upon a Mattress* with Littleton United Methodist Church as well. I want to thank my mom for supporting me and most of all Rebekah, Jim, Roberta, and Hannah for all helping me be the best I can be in this production and their support.



Rebekah Ortiz, Stage Director

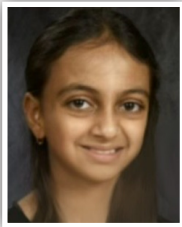
Rebekah (she/her) is so grateful to be a part of Wesley Players' 25th Anniversary Season! She has worked in the Denver Metro musical theatre community for 16 years as an actress, teacher, and director. A proud Colorado native, Rebekah is committed to building high quality and mindful theatre through the collaborative process. She has worked with many of the

professional theaters in town including the Denver Center, Arvada Center, BDT Stage, Town Hall Arts Center, Miners Alley, Aurora Fox, Southern Colorado Repertory, and Candlelight Dinner Theatre. Rebekah teaches with the Performing Arts Academy (PAA), Arvada Center and Miners Alley. She is proudly represented by Radical Artist Agency and holds a B.F.A. in Musical Theatre from Metropolitan State University of Denver, where she was fortunate to be shaped by several amazing educators. Recent directing credits: THAC's *All Shook Up* (co-director), *La Cage Aux Folles* (assistant director); Wesley Players *Guys and Dolls Concert Version*, and *All Together Now*, PAA's *Shrek, Jr.* and *Highschool Musical, Jr.* The Littleton community is especially dear to her heart as it is also where she and her husband have chosen to raise their son.



Leslie Porter, Miss Lark, Transformed Character, Sweep

Leslie has been active in community theatre for many years and with Wesley Players in some 14+ productions. She is happiest when singing and dancing and so proud and excited to be a part of this highly talented cast!



Megha Rao, Penguin, Toy, Kite Ensemble

Megha is a curious 6th grader who loves to explore. She particularly loves dance and theatre amongst so many other things. She is excited to be part of her very first theatre performance - *Mary Poppins* and is looking forward to be in many more plays in the future.



Jack Ramsey, Transformed Character, Customer, Sweep/Messenger

Is thrilled to be a part of *Mary Poppins*...he has always wanted to be a chimney sweep! Other exciting productions with Wesley Players are *Les Miserables*, and *The Secret Garden*. He loves being able to do this with his mom and dad and knows his brother, Luke, is jealous.

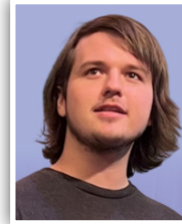


Dr. James Ramsey, Music Director

James Ramsey is Executive Director for the Performing Arts Academy and Director of Music and Arts at St. Luke's UMC. Previous engagements include college instruction positions at the University of Colorado, University of Denver, and Whitman College in Washington. Additionally, Ramsey has also served as Artistic Director for the Wesley Choral Festival and

Assistant Conductor of the Grammy award-winning San Francisco

Symphony Chorus. James earned a Doctor of Musical Arts degree in Choral Literature and Performance at the University of Colorado, Boulder, a Master of Music degree in Conducting at the Eastman School of Music, and a Bachelor of Music Education at Middle Tennessee State University. Mentors and teachers include Raphael Bundage, Joan Conlon, Vance George, Donald Neuen, Alfred Mann, and Samuel Adler. Ramsey has served as the American Choral Directors Association's Repertoire and Standards Chair for Community Choirs for both Colorado and the Southwest Region. James resides in Littleton with his wife, Leigh, and their sons, Jack and Luke.



David Sanders, Assistant Stage Manager

David Sanders-Assistant Stage Manager-David is so excited to be helping out in this amazing production! This is his third show with Wesley Players, and his first-time Assistant Stage Managing. Favorite past roles include Dickon in *The Secret Garden*, Gomez Addams in *Addams Family*, and Chip Tolentino in *25th Annual Putnam County*

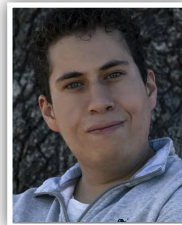
Spelling Bee. He is cheering his mom on from backstage!



Laurie Sanders, Transformed Character, Clerk, Feed the Birds Ensemble, Kite Ensemble

After performing in school and church choirs for many years, I loved working behind the scenes supporting my son, David Sanders, in his musical theater endeavors. He has now encouraged me to be in the front lines. This is my second show with the Wesley Players.

My first being *The Secret Garden* which is my favorite musical ever. Thanks to David for encouraging me to do this show!!



Vince Sanchez, Tea Party Waiter, Clerk, Feed the Birds Ensemble, Kite Ensemble, Board of Directors

Vince Sanchez has been performing with Wesley Players for three years, *Mary Poppins* will be his fourth show with them. His top goal for this show was to impress his director and show her that he can be the best actor that she's ever worked with. His big

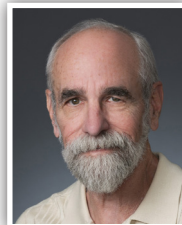
dream is to perform at the Town Hall Arts Center but still stay with Wesley Players.



Cat Scheer, Reality Strollers, Clerk, Feed the Birds Ensemble, Miss Andrew

This is Cat's second time performing with Wesley Players and she's so glad to be back. A longtime performer, Cat has a BA in theater from Sweet Briar College and has most recently been seen around town performing in the original musical revues produced annually by Magic Moments production

company. Favorite past roles include Laurie in *Oklahoma*, Annelle in *Steel Magnolias*, Ariel in *The Tempest*, and Hedda in *Hedda Gabler*.



Jon Scheer, Reality Stroller, Chairman, Feed the Birds Ensemble, Kite Ensemble

Jon has over 60 years of experience on the stage acting, directing, and stage managing. This is his third show with Wesley Players all this season having spent the past 16 years in Victoria, B.C. He looks forward to many shows to come.

CAST & CREW BIOS:



Scruffy, the time-traveling wonder dog, is delighted to play Willoughby in his first Wesley Players pawduction. He has been the star of many puppet ministry shows here at St. Luke's. For more information, contact Scruffy or his agents - Stephen and Cathy Collins. Scruffy would like to remind everyone to not interrupt when someone's barking.



Erynn Shryack, Transformed Character, Mrs. Corry, singer/puppeteer, Kite Ensemble, Sweep, Asst. Vocal Director, Communications

A graduate of Colorado State majoring in Vocal Performance and marketing, Erynn has been a WPTC participant for 10 years! Starting in *Nonsense* as Sister Mary Amnesia, she has participated in over 12 shows, including *Cinderella* in *Into The Woods*, Gertrude in *Seussical*, Mabel in *The Pirates of Penzance*, and many more! Part of what she loves about WPTC is the ability to do shows with her husband and 2 kids. When she isn't at her grown up job as a Director at Visa, she teaches voice lessons part time and is the Vice Chair of the Wesley Players Theatre Company Board.



Lochlann Shryack, Michael Banks

Lochlann is excited to perform in *Mary Poppins!* He is a 6th grader at Cougar Run Elementary. He recently played Colin in Wesley Player's *The Secret Garden* at the Historic Elitch Theatre. When not performing with Wesley Players, he's busy performing with PAA or playing Gorilla Tag on VR!



Nick Shryack, Bert

'Ello Guvnah! Nick is excited to bring Bert to life in this production of *Mary Poppins*. This is his third year with Wesley Players, and he's having a blast with all of these wonderful people. If you can't understand what he's saying because of his amazing cockney accent, he'll have a transcript available at the end of the show. :-)



Brian Sides, The Chairman of the Board

Brian is a Denver native and is proud to have "Served and Protected" the citizens of his hometown over the last 30 years! He JUST retired! Brian's first experience with the Wesley Players was *Les Miserables* in 2015. His favorite Wesley roles include Horton the Elephant in *Seussical*, the Pirate King in *Pirates of Penzance*, and Ghost of Christmas Present in the more-recent *A Christmas Carol*, and Dr. Craven in *The Secret Garden*. He is the proud father of a local real estate agent, and a US Army Sergeant - who gave him a 5-year-old grandson and 2-year-old granddaughter. Brian is honored to share the stage with his lovely bride, Erin, and the rest of this talented cast and crew.



Erin Sides, Tap Captain, Transformed Character, Customer, Sweep 1, Dance Captain

Erin joined Wesley Players in 2017, and has been involved in nearly every show since. She's met some amazing friends, including her husband, Brian, right on this very stage! Erin is very excited to be tapping in this amazing show along with old and new friends. When not participating with Wesley Players, Erin can be seen performing with

Foothills Theatre Company, Broadway to Africa, Atomic Theatre, and professionally as a CIT scenario actor.



Patti Speedy, Reality Strollers, Clerk, Feed the Birds Ensemble, Kite Ensemble

Patti is honored to join this talented cast & crew for *Mary Poppins*. She has performed in 16 Wesley Players productions and loves the feeling of working on a show from the first rehearsal to closing performance.

The process is magical in many ways, and becoming a theatrical family and team is the best! Patti sends her love and thanks to her husband and daughters for their flexibility and support around rehearsals and show week.



Kensi Swackhamer, Annie Corry, Toy, Kite Ensemble

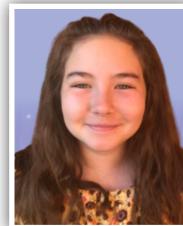
Kensi is 11 and in 5th grade this year. She loves singing, acting, and gymnastics. Kensi has been in theater since she was 5 years old and the stage is one of her favorite places to be! She has enjoyed performing past roles including Babkak in *Aladdin Jr.*, Molly in *Annie Jr.*, Smee in *Peter Pan Jr.*,

Scuttle in *Little Mermaid Jr.*, ensemble in *Beauty and the Beast*, and most recently Dorothy in *The Wizard of Oz!* This is Kensi's second production with Wesley Players. Kensi would like to thank her family and friends for all their support! Kensi hopes you enjoy the show!



Ryan Thomas, Lighting Design

Ryan Thomas is a lighting designer working in Denver as well as an electrician at the Arvada center. He is a recent graduate from DU and has designed several shows recently including *Case for the Existence of God* (Curious Theatre), *The Taming* (DU), *Circling* (Denver Theatre Ensemble), and *Cendrillon* (UNC opera).



Morgan Toomey, Fannie Corry, Toy, Kite Ensemble, Sweep

Born and raised in Littleton, CO, Morgan has enjoyed stage acting since the age of 3. This is Morgan's 5th Wesley Players show, and she can't wait to do more. Other talents and hobbies include dance and crochet. When she's not acting, you'll find her reading the classics, or spending time at her local quilting bee. Her love of all things Jane Austen inspires her at every turn.



Sherry Urdiales, Statue, Customer, Sweep

Sheri is excited for her second performance with the Wesley Players, after performing this past summer in *Broadway on Broadway*. She is grateful for the chance to be a part of such a talented cast and is having an incredible time! Outside of her passion for dance and music, which she also shares with the children at St. Luke's Little School, she enjoys being with her family, and supporting her children in their various activities. Thank you for supporting our show!

CAST & CREW BIOS:



Emma VanBeek, *Feed the Birds Ensemble, Toy, Kite Ensemble*

Emma VanBeek is proud to be in her 4th Wesley Players show. She was previously seen in *A Christmas Carol* as Emma Cratchit, *Beauty and the Beast* as the dog/footstool, and *The Secret Garden* as Children's Choir. Emma is so happy for her family to be helping her in these shows. If Emma is not acting you can find her singing, reading, or playing with her little sister.



Jay VanHoosen, *Policeman, Customer, singer/puppeteer*

Jay is happy to be performing with the Wesley Players again. He previously performed in *Seussical, The Music Man, The Pirates of Penzance* and *Little Women*. He wants to thank his two sons for urging him to give theater a try. Performing with such a talented group of people and supportive family is truly special.



Elysia Vigil, *Transformed Character, Customer, Teddy Bear, Sweep*

Elysia is very excited to be a performer in *Mary Poppins!* Elysia has stage managed for Wesley Players' productions, *The Secret Garden* and *A Christmas Carol*, and as assistant stage manager for *Beauty and the Beast*. When she isn't in rehearsals, Elysia is working as a behavior therapist helping kids

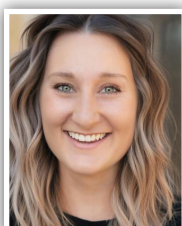
in the autism spectrum bloom and grow, and watching Disney movies with her dog Gus!



Kendell Visser, *Reality Strollers, Clerk, Feed the Birds Ensemble, Kite Ensemble, Board of Directors*

Kendell is excited to join the cast of *Mary Poppins* in his 4th show with the Wesley Players. Other WP credits include the 2022 *Broadway under the Stars, Guys and Dolls*, and the 2024 Disney's *Beauty and the Beast*.

He has been doing choir for 20 years (even performing once in Carnegie Hall) and theater for only 3 years but enjoys the community the theater environment brings. His favorite theater credits have included Motel the Tailor/Mendel the Rabbi's son in Community of Grace's 2021 production of *Fiddler on the Roof* and thug/ensemble in Englewood Summer Drama's production of *42nd Street* in 2024. Kendell would like to give credit to the Lord his Saviour, thank his parents, Diane and Danny, brother Kyle and his math classroom of students for all their wonderful support. Now, come and have a Jolly Holiday with us as we present this supercalifragilisticexpialidocious show of *Mary Poppins!*



Jana Wesson, *Neleus, Customer, Sweep*

Jana Wesson is excited to be performing in yet another show with Wesley Players. Her favorite roles include Jo from *Little Women*, Belle from *Beauty and the Beast*, and Narrator from *Joseph and the Amazing Technicolor Dreamcoat*. Jana has directed and assistant directed two shows with Wesley Players in the last year and looks forward to

putting her own work on the stage in the future. When Jana is not performing she is teaching music at a preschool and being with her family.



Karin Wesson, *Reality Stroller, Clerk, Customer, singer/puppeteer, Kite Ensemble*

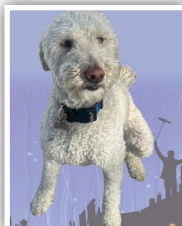
Karin has been a part of the Wesley Players for many years. She is grateful for this welcoming community and all the people that make it up.



Maria Yost, *Statue, Customer, Sweep*

A creative and seasoned performer, Maria is excited to bring her passion and experience to the ensemble of *Mary Poppins*, marking her 5th theatrical production with the Wesley Players. Maria was drawn to musical theatre at a young age when she directed her siblings in various plays and musicals in the family back yard in Johnstown, Pennsylvania. As life

took her all around the world, Maria always found her home in the theatre and is grateful for the family and friends she made participating in productions. Favorite roles include Betty Haynes (*White Christmas*), Ulla (*The Producers*), and Miss Adelaide (*Guys and Dolls*). When she's not on stage, Maria enjoys running, spending quality time with her husband, Paul and dog, Luke, and sharing her love of the performing arts as the theater and choir teacher at Carmody Middle School.



Suki, *Cast and crew emotional support dog*