



Highlands Ranch, Colorado

The CHRONICLE

June/July 2006

ST. LUKE'S UNITED METHODIST CHURCH

Inside This Issue:

Church & Society.....3
2006 Graduates.....6
Children's Ministries.....7
Servant Spotlight.....8
Women of St. Luke's....8
Music & Drama.....9
SLY.....10
and much more!

Last Call for Family Campers!



Don't miss Family Camp 2006,

July 13-17 at Winding River Resort (windingriverresort.com) in Grand Lake, CO, near Rocky Mountain National Park. Come for all four nights, or just a couple – whatever your schedule permits, we'd love to have you!

At Family Camp you'll enjoy pancake breakfasts and potluck dinners with other St. Luke's families, daytime activities such as hiking, fishing or horseback riding, nightly campfire gatherings and even an informal Sunday morning worship service. Hot showers, electricity and running water are available onsite.

The deadline for Family Camp registration is Sunday, June 25. Sign up in the Narthex each Sunday after services – just look for the Family Camp registration table. For more information, please contact Caroline or John Merchant at 303-791-6251, or john.merchant1@comcast



"Just Like Us" Brings Us Together

by Jenita Rhodes

Serving together – Children, youth and adults gather to tell a story of diversity and acceptance and have lots of fun! The St. Luke's Children's Dinner Theater was a wonderful success again this year. With over 75 children, youth, puppets and adults giving generously of their time and talents, the evening

of May 5th was filled with tasty food, inspirational music and exceptional acting. Our Fellowship Team provided a "Cinco de Mayo" meal of tacos, quesadillas and salad with lively decorations. The Cherubs Choir started the performance with several of their best selections and the Puppet Ministry Team entertained the crowd after the play

with karaoke versions of some great Sunday School tunes. The play, "Just Like Us", showcased a cast of children ages 4 years to 6th grade. They gave a superb performance of a fantasy tale set in a neglected park around a sad tree played by Eliza Ducnuigeen. On one side of the park lives the Blues, led by "One", Zach Madsen, and on the other live the Greens, led by "A", Meredith Tolleson. The Blues, who love music and the Greens who love poetry show nothing but intolerance, fear and hatred toward each other. Then a storm brings in a Purple, "Allina", played by Molly Baird, into the park. With Allina's influence, both the Blues and the Greens learn some eye-opening lessons about each other and life.

The children worked hard and, with only a few weeks of rehearsals, gave a fabulous show. Zach Madsen said, "the whole thing was 'Bluetastic!'" Molly Baird added, "I learned that when you are doing a play, no matter what, you should always talk loudly, even if you have a mic on. I think it was very nice of all the parents who volunteered their time. And I think I'll remember how important it was to look at the audience!"

"I would like to thank everyone who gave their time and gifts to make our program such a success. I am so grateful for the support and energy that everyone brought to the evening's events," said Director Lynne Butler.

In addition to all of the wonderful fellowship the evening brought, the event raised over \$500 to benefit Big Brothers and Big Sisters of Denver, Inc.



Spirituality Retreat August 11-14

St. Luke's is planning its first spiritual retreat in the mountains, August 11-14, 2006. Join us for 4 days and 3 nights of solitude, study, and simplicity. Reverend Dave Money will be leading a spiritual retreat in the high mountains of Colorado this summer. We have reserved the Francie's Cabin, one of the newer 10th Mountain Division huts, for the occasion. The hut is located in a clearing just below treeline in the Arapahoe National Forest, five miles south of Breckenridge. From the trailhead, access to the hut requires 5 miles and 1,600 vertical feet of hiking, so participants need to be fit and comfortable hiking at high altitudes with a pack.

A hut trip is much like camping, only more comfortable. The 10th Mountain Division huts are generally wooden structures, and each contain a wood stove for heating, propane stoves for cooking, and an upstairs area with padded bunks for sleeping. You simply bring a sleeping bag. Retreatants participate in a variety of activities, from planned discussions and study to the daily cooking and cleaning. There is always plenty of time for solitude, prayer, and study. The huts we choose are often near lakes and streams, and there are always good opportunities for hiking or simply enjoying nature far from the civilized world.

Trip dates are August 11-14th. Total cost for the trip is \$140.00 per person, which covers food and lodging for 4 days and 3 nights. These retreats have been extremely popular in the past, so send in your payment soon to reserve a space. We will be carpooling to and from the trailhead. For details on how to make a reservation, see www.puravida.org/participate_retreats.htm or contact Dave Money in the church office at 303-791-0659 x33.

Sunday Worship Services:
8:00am, 9:30am, 11:00am

Sunday School:
(Adult, Youth & Children)
9:30am & 11:00am*
(*No Sunday School at 11:00am
for 1st-6th grade June 11-Sept. 3)
Nursery available for all services

Church Office: 303-791-0659
Fax: 303-470-5615
St. Luke's Youth.....x45
Childcare Reservations.....x47
Email: office@stlukeshr.com
Website: www.stlukeshr.com

Staff:

Rev. Janet Forbes.....x13
Senior Pastor
Emergency: 303-241-9312

Rev. Dave Money.....x33
Associate Pastor
Emergency: 303-932-1035

Rev. Pam Rowley.....x32
Pastoral Care
Emergency: 720-348-1528

James Ramsey.....x23
Director of Worship & Arts

Carrie Mallery.....x35
Associate Dir. of Music Ministry

Kay Coryell.....x43
Assistant Music Director

Chris Wilterdink.....x14
Director of Youth Ministry

Ann Smith.....x19
Assistant Youth Director

Jenita Rhodes.....x27
Director of Children's Ministry

Lynne Butler.....x11
Pre-school Ministry

Kristina Linn.....x40
Childcare Ministry

Lynda Fickling.....x20
Dir. of Membership Ministry

Bonnie Funk.....x10
Administrative Assistant

Dave Cupp.....x24
Director of Finance

Dan Kuhl.....x44
Facilities/Custodian

Kay Swanson...303-791-1982
Director of Little School

All articles, photos and
notices for the August issue
of *The Chronicle* are due
July 10th.

Editor:
Sharon Oliver
chronicle@stlukeshr.com

A MESSAGE FROM OUR SENIOR PASTOR



Rev. Janet Forbes
Senior Pastor

OFF TO SUMMER SCHOOL!

Not every student looks forward to having to go to summer school! However, my brain cells are looking forward to spending some concentrated time at a study desk in theological libraries this summer.

I will be attending classes on the campus of Drew University in Madison, New Jersey, for three weeks, June 19-July 8, as a part of the Doctor of Ministry program in Church Leadership and the 21st Century.

I have completed the first year of this program concentrating on postmodernism, Christian futuring, and the nature of the church in changing times. I chose this degree program in part because of its emphasis on the use of technology as a method for learning. Many thanks to our Ken Fong for coaching me in online learning with computers, chat rooms, web cams, and up/down-loading papers and projects.

There are 13 students in my class. We serve churches all over the world: Korea, Canada, the United Kingdom, the Czech Republic, and the United States. It is fun to have some of us show up for class in our pajamas given the number of time zones in which we gather! Last semester, I went to "class" online at 6:00am every Monday morning!

This summer I will take a class on Theological Methodist and Practice as I prepare for my research project and a class on Worship in a Media Culture.

I am most intrigued by the ministry intensive class, July 19-26: A Celtic Pilgrimage: Ancient Sites, Ancient Gods, and a Living Faith. I will spend a week at St. Deiniol's Library in Hawarden, Wales. We will hear lectures by scholars in Celtic spirituality as well as visit Welsh church sites in which that spirituality flourished. The cross on the tower in front of St. Luke's is a Celtic cross. The original crosses are towering stone-carved story-telling crosses around which people gathered to learn and tell Bible stories. Since Forbes is Scottish and Davis is Welsh, I feel like this is a pilgrimage into my own family story.

Many thanks to Don Messer, President-Emeritus of the Iliff School of Theology, for preaching on June 25 on his new book, *Ending Hunger*, which he co-authored with Bob Dole and George McGovern. Thank you, Rev. Pam, for serving as lead pastor in my absence.

The blessings of summer to you.

—Rev. Janet

Update Member/Friends Info

Does our church database have YOUR family information correct? Update YOUR record for our annual "GuideBook & Directory." Are there any additions or deletions that may have occurred in YOUR family over the past year... change of phone number/address?...new e-mail?... new baby?! Please contact lynda@stlukeshr.com or 303-791-0659 x20 with any changes by June 19, 2006. *This Guidebook will be mailed to all of our friends and members of St. Luke's only.

RECAP OF "THE DA VINCI DIALOGUES" CLASS

"The Da Vinci Dialogues" enjoyed a large turnout, as 50 to 90 people attended both classes on May 7th and 14th. The two sessions were meant to stimulate dialogue about the book, "The Da Vinci Code" by Dan Brown, and the subsequent movie. The attendees participated in an interesting dialogue, which demonstrates that our congregation desires to have interactive discussion about topics like these. The discussion was lively and a variety of opinions about the subject were shared freely. Most intriguing is the idea that this book is serving as a way for many to get their thoughts about the history of the church and our faith out in the open. The discussion was informational even though it sometimes became polarized. Since most people fit somewhere in the middle, the wide opinions helped some calibrate where they are in the discussion. Many people wrote me encouraging emails that they enjoyed and benefited from the discussions.

Isn't it ironic that the very thing that seems to be dividing us about this book are the things that were being battled about during Jesus' time? What is of lasting import to us about our faith? How can we better align ourselves to God? How can our lives have more meaning? I feel that Janet's sermons on the faith wheel tell us where and how we need to be fed, and how it will mean the most to us, as individuals.

It is in the INVITATIONAL St Luke's spirit to respect and celebrate the differences in which we all approach matters such as faith. We are a diverse group of people at St Luke's. If we are to pass the invitational, relational, and missional test, we must grow to our ability to be respectful of each other's faith, especially when we do not agree. Our goal should be survey, to explore, and to examine. Most importantly, to live our values we should strive to always remain in dialogue. This was fun. Let's do it again. *Shalom!* —Scott Wesson

The Book of Discipline and the Judicial Council: Our Making of Historic Events

by Susan McIntosh

I'm taking a break from describing the Social Principles to summarize how these Principles and the Book of Discipline are put into action, challenged, and potentially changed. Recent events in the United Methodist Church, and the response of its members, may prove to be historic.

The Judicial Council of the UMC (the church's equivalent to the Supreme Court) made a controversial ruling in October. They announced that Rev. Ed Johnson was within his rights to deny membership to an openly gay constituent even though his District Superintendent (supervisor) and Bishop did not approve of his actions (Bishop Kammerer placed him on leave). The Judicial Council majority (5 of the 9 judges) ruled, "The 2004 Discipline invests discretion in the pastor-in-charge to make the determination of a person's readiness to affirm the vows of membership."

The dissenting judges responded that "Nothing in the Discipline gives pastors discretion to exclude persons presenting themselves for membership in the Church." They also stated:

The majority's decision now condones the denial of the fellowship of the church to persons in need of its ministry and guidance who are homosexual. The decision eviscerates our statement that God's grace is available to all and reduces it to an empty platitude.

After this decision, the Council of Bishops unanimously opposed the Judicial Council's decision. (This would be similar to the US President opposing a decision made by the Supreme Court.) They stated:

While pastors have the responsibility to discern readiness for membership, homosexuality is not a barrier. With the Social Principles of The United Methodist Church we affirm: "that God's grace is available to all, and we will seek to live together in Christian community."

Many within the church weighed in with their frustration at the decision. Over 200 of us at St. Luke's signed a letter we sent to the Judicial Council in November, which said in part:

If a person is asking for membership in a church, they should not be turned away, no matter who they are. We are all broken people; we believe denying community to particular others who seek it is contrary to scripture and our traditions.

Bishop Kammerer requested that the Judicial Council reconsider its ruling. The opportunity for that possibility came this May. However, the Judicial Council chose, by a five to four vote, not to reconsider.

The Judicial Council ruling essentially enables ministers to deny or accept people into membership of the United Methodist Church without oversight from the "connectional" part of our system – the District Superintendent and Bishop. Any minister can deny membership for any reason. While some of us may feel that some such decisions are reasonable, other people will feel that these decisions shut them out of God's community.

The United Methodist Church considers itself part of the "church universal." Anyone who has been baptized and accepted into membership in another tradition is welcome into the United Methodist Church without additional requirements. Providing for such uncontrolled discrimination as this ruling allows may also remove the connection that the United Methodist Church has developed with other denominations.

How can we respond if we disagree strongly with a position the UMC, or one of its parts, has taken? It is likely that each of us disagrees with some aspects of the Social Principles, or other statements or actions of part of the church. I believe a good model is in the responses of St. Luke's clergy:

Dave Money and Pam Rowley – *As United Methodist clergy, we are pledged to follow our denomination's laws, including decisions of the Judicial Council – even those we disagree with. Therefore, it is important to understand the limits of those rulings. In this case, the Council's opinion gives a pastor discretion to deny membership based on a person's sexual orientation – it does not require it. The pastors at St. Luke's will exercise their discretion to continue welcoming into membership all persons who profess their faith in Jesus Christ and promise to support the church with their prayers, presence, gifts, and service.*

Janet Forbes – *I believe that St. Luke's embraces the heart of the United Methodist tradition in its mission statement: "We are an inclusive community of faith, seeking to meet people where they are." This radical hospitality opens doors to everyone. We will always be a congregation that welcomes on the basis of God's gift of grace.*

Bishop Warner H. Brown, Jr., of our Rocky Mountain Conference, has also voiced his opinion in the matter:

[I] believe that the decision as originally rendered was not a decision of grace. It is Christ's invitation that brings us to the Table of Holy Communion, and it is Christ's invitation that brings us into deeper fellowship with fellow Christians within the life of a local congregation. All of us who serve as clergy are merely extending the invitation that comes from our Savior; an invitation to live into a new life in relationship with God's people.

Bishop Brown continues by noting that, in the same way that a citizen can be opposed to actions taken by parts of the US government, a church member can disagree with the Judicial Council, or the Council of Bishops. And, just as disagreement with the government is not the same as disloyalty, "our agreement or disagreement with the Judicial Council decision does not lessen our responsibilities to model Christian conversations or civility within the great family of United Methodists."

Throughout the discussions on this issue, I have noticed that all involved actively work to remain united in Christ. We are all brothers and sisters in Christ, and our compassion for one another, despite our disagreements, is one of the exceptional characteristics found in Christian communities. As the community of St. Luke's discusses this topic, each of us will likely feel some discomfort. However, I believe each of us will grow spiritually as we struggle though that discomfort and talk about these issues with our families, our fellow Methodists, our pastors, and with God.

I want to encourage the United Methodist Church to keep the doors – and our ears – open to all who seek Christ. This includes those who feel they have been unjustly excluded, and those who believe that the exclusion or the pastor's right to make this decision is just. I do not want anything I say to push anyone else away from the church; then the church would lose the blessings that people of all opinions and perspectives bring to our community. I want to show the same accepting and open compassion for all that Jesus showed both followers and adversaries. Let us, as a community, remain in open dialogue and compassion with one another.



Week Ending May 19, 2006

We are Called to Serve

Serving Opportunities June/July 2006

Prayerfully consider where to serve at St. Luke's

"Each man should give what he has decided in his heart to give, not reluctantly or under compulsion, for God loves a cheerful giver." —2 Corinthians 9:7

Adult Education Team: This team's mission is to revitalize and expand the adult education offerings at St. Luke's. Meetings are held as needed and we are always open to new ideas for classes. Contact: Lynne Butler 303-791-0659 x11 lynne@stlukeshr.com

Guest Service Station: Offer a welcoming smile and simple directions. Serving one Sunday a month, 30 minutes prior to the service. Position is near the visitor center in the foyer. Passion for service and hospitality. Contact lynda@stlukeshr.com 303-791-0659 x20.

Adult Library Team: Help upkeep the library books in our NEW! Adult Library located in the office. Do at your own time, maybe 1 hour a week, re-shelving books and maintaining appearance. *If you have computer experience Anne Reck could use some help categorizing new books. Contact lynda@stlukeshr.com (Lynda Fickling) 303-791-0659 x20 or pittwife@aol.com (Terri Beecher).

Dinners for 6,7 or 8: Seeking a team leader for this exciting ministry. Help organize two times a year by sending e-mails, participating in Ministry Fair and setting up the groups of folks who sign up. For more information, please contact Susan Richards at jaredsmom2@hotmail.com or 303-933-7316. Help keep this fun ministry flowing!

Fellowship Events Team: What a fun team to be a part of! We are the inside catering team for all the social events at St. Luke's. Most recently we have help with the Mardi Gras Dinner Dance, Children's Dinner Theater, New Member Brunches. Coming in the fall, Annual Church Picnic, Ministry Fair, Drama Dinner (*The Sound of Music!*). If you have a passion for hospitality, serving, helps-please contact Trudy Turner 303-791-1078 or Lisa Lehnus 303-346-8114 lehnlus@yahoo.com. There are many hands needed to fill many needed tasks!

"The gifts he gave were that some would be apostles, some prophets, some evangelists, some pastors and teachers, to equip the saints for the work of ministry, for building up the body of Christ, until all of us come to the unity of the faith and of the knowledge of the son of God, to maturity, to the measure of the full stature of Christ." —Ephesians 4:11-13

Hospitality Breakfast & Workshop - Sat., Aug. 5

Are you someone who would like to serve as an Usher or Greeter at St. Luke's? Have you been serving as an Usher or Greeter this year? If so, we would like to invite you to our Annual Appreciation Breakfast/Workshop. Breakfast will be served from 8:30-9:00am, followed by a workshop from 9:15-10:30am. Come, get to know your fellow team members and be a part of one of our valued ministry teams. Childcare will be available from 8:30-11:00am by reservations 303-791-0659 x47. Please RSVP to one of the following team leaders:

Ushers-Hospitality Staff Liaison: Jim Ramsey x23 or jim@stlukeshr.com

Greeters: Lisa Williams 303-683-7056 or lisawilliams2@qwest.net
Karmie Hilleary 303-683-4696 or karmie@comcast.net

Hospitality Staff Liaison: Lynda Fickling x20 or lynda@stlukeshr.com

Gerry Wright (Gail Abernathy's mother)
Carolyn Dean
Jeff Patefield
Nancy Rawls (Betsy Keyack's sister)
Jennifer Emerson-Roy (Harry & Nancy Cushing's niece)
Deb Murphy (Little School mom)
Erin Morgan (the Walter's family friend)
Syd Harrison (friend of Brad Chase)
Dorothy Lloyd (Sheri Shea's mother)
Jack Taylor (Loree Kohrs' friend)
Bob Lanham (Ann & Jan Lanham's son/brother)

Frances Boles (Tim Boles' mother)
Lisa Maciejewski (Jennifer Jiang's sister)
Erienne Romaine (Raap family friend)
Marlyn Gaskin (Diane Whetson's friend)
Karen Gumz (Sandy Thompson's friend)
Don Craig (Marcia Benshoof's father)
Wendy Walker (Sheri Shea's friend)
Eileen Williams (John Williams' mother)
Bernie Mezger (John Mezger's father)
Guillermo Rodriquez & family (Gail Abernathy's son-in-law)
Edith Walters (Terry Walters' mother)
Cindy Barlow
Carol Eckberg (Kris Reif's mother)
Margaret Hinchey (Kay Swanson's friend)
Yvonne Schmidt (Laura Kuhl's mother)
Sturgis Wetherington
Jerry Heinz (Rachel Nolder's father-in-law)
Sandy Ray (Ellen/Lynda Fickling's niece/cousin)
Edith Allen (Susan Stanley's mother)
Norma Harris
Bill Lee, Jr.
Fumiyo Yamamoto (Jon Takayama's grandmother)
Grant Larson
Mrs. Navai (Manijeh Badiozamani's mother)
Pat Dublin (Bob Davis' mother)
Linda Kercheval (sister of Tony Palizzi)
Susan Fritz (friend of Kay Swanson)
Ursula Cherry (friend of Trudy Turner)
Richard Vanderkooy (brother-in-law of Rick and Robin Fort)
Ron Aines (Marshall Aines father)

Janet Blatchford (friend of Samantha Leahy)
Carol Anderson (friend of Shelly Bonjean)
Jan Winter (friend of Jenny Stevenson)
Alondra Picaco (co-worker of Jenny Stevenson)
Janet Johnston
Shaun Van Dyke (Bobbi King's great nephew)
Sherry Merrill
Louis Pressel (Carolyn Warden's cousin)
Kathy Eccles
John Poole (friend of Joy Damsgard)
Kathie Brenneman (Lynda Fickling's sister)
Chris Goldsberry
Ralph Crandell (Mike Stephen's uncle)
Kris Kinney
Ray Bobkowski (Ted Bobkowski's father)
Lisa Bobkowski (Ted Bobkowski's mother)
Jordan Harmon (Walter family friend)
Lucas Ryskamp (former LS student)
John Sudol (Joyce Carnes' cousin)
Jan Dickson (Bobbi King's friend)
Keith Ayers
Louise Cahill (Lynne Montagne's mother)
Sam Eyer
Marcy Glasser
Jessie Meyer (friend of Gail Abernathy's)
Marie & Maima Sehkar
Dwight Griggs (Susan Hooke's father)
Corky Strader (brother-in-law/uncle Miyaki family)
Marlin Meehlhause (Linda Harris' father)
Claudia Swanson
Suzanne Ross (Tasia Matthew's teacher)
Delores Gardner
Dick DeWire (friend of Pat Ludwig)
Jake Smith
Maima Sekar
Joey Miyaki

Sympathies:

To Bob & Peggy Fretz on the passing of Bob's father, True Fretz, April 21

To Kam & Tim Boles on the passing of their friend, Marge Snoddy, May 13

Summer Saturdays

Join us for breakfast! A social gathering for all women of St. Luke's and their friends. We had so much fun during the year at "Women's Night Out", we didn't want stop eating... so join us for an early meal with friends this summer.

Saturday, June 10 at 8:30am — The Egg & I
(Highlands Ranch — Town Center)

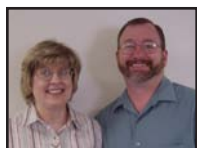
Saturday, July 22 at 8:30am — Mimi's
(9155 Park Meadows Dr. — Lone Tree)

On **August 14th** we will have our planning dinner (to select the restaurants for our regular evening dinners for the year) at Cheesy Jane's — 6:30pm.

Mark your calendars now!!

Contact: Lynda Fickling 303-791-0659 x20 or lynda@stlukeshr.com

NEW MEMBERS



James & Marilyn Bacon
(Matthew, Brian)

"Everyone is friendly... The music and arts here are wonderful. The sermons are touching and meaningful and always bring us back."



Ken & Nancy Bergquist
(Cameron, Gabrielle)

"We feel that St. Luke's is the perfect church home for our family."



Bruce Buccio & Marjorie Roberts



Berit Dotts
(Husband Dan, Delaney)

"Would like our daughter to have a spiritual base for her future. Enjoy the atmosphere and people at St. Luke's."



Maurice & Cindy Oro
(Sarah, Ryan)

"In a very short time, we feel that St. Luke's provides the warm, open and inviting environment for us, and our children, to explore and grow our spiritual lives."



Mary Peterson

"After moving to HR two years ago, I started attending and never looked back. What a dynamic church this is. The Bible study groups have increased my faith journey."



Scott Peterson

"The absolute forward thinking that is going on here. From my mother to my daughter we have felt finally at home here."



Matt & Penny Rose
(Copland, Thomson, Carter, Gabrielle)

"Once we started coming to church here it felt like home."



(Daniel, Emily, Katie, Maggie)

"We enjoy the friendly, active atmosphere and our kids are interested in all of the youth activities. Thank you for being so inviting and encouraging!"



John & Kim Uselman
(Ryan)

"We feel very welcome here."

We invite you to become members of St. Luke's United Methodist Church. **Our "Next Step Class" will be Aug. 13 from 11:00am-2:30pm.** Lunch with Rev. Janet is provided. Childcare is available by making a reservation at least 24 hrs prior to the event at x47. To register, contact Lynda Fickling x20 or lynda@stlukeshr.com

MISSIONS

Mission of the Month: Local Missions

by Linda Streaty

Looking for a way to get involved with Missions? Here's your chance! During the months of June and July, the focus for the Mission of the Month will be on local missions. There are so many areas where your help is needed:

1. Pick up clothing once, twice or all month and transport it from the Missions Closet to DenUM.
2. Purchase grocery certificates for our Liberian family.
3. Make monetary contributions by writing a check payable to St. Luke's UMC (Indicate "missions" in the remarks section). Feel free to designate your preferred charity from the list in the next paragraph or allow the missions committee to determine where it is needed most. One can also use the envelopes found at the mission kiosk.
4. Finally, on Sunday, July 23rd, D2 (Donate and Deliver) Sunday, bring a canned or boxed unopened food item and/or help deliver these donations to DenUM and our Liberian family.

Some of the specific local ministries that will receive our attention in June and July are Denver Urban Ministries (DenUM); Shannon's Hope, a home for pregnant women; Inter-Faith, an organization which provides food, clothing and medical help to the needy; our adopted Liberian family, who struggles to make ends meet and is not yet eligible for federal or state aid; and Ecumenical Refugee Services (ERS), which assists new refugees in getting settled in our country.

If you have further questions or can volunteer with deliveries, please contact Linda Streaty jslsts@netzero.net or 303-840-0222, Peter Reif 303-593-0987 or Jan Rufien 303-979-3491.

New Missions Class Coming in September - Faith in Action!

This class will start with a month-long study of Rev. Don Messer's book, "Ending Hunger Now." Then we will proceed to learn more about how to put our faith into action through books, discussion, guest speakers, field trips and mission projects. Leader will be Betsy Keyack, 303-346-7057, bkeyack@att.net. Day and time are to be determined.

STEPHEN MINISTRY

New Stephen Ministers to be Trained

Since starting our Stephen Ministry program at St. Luke's a year ago we have seen the great value of lay caring ministry. Another training class for Stephen Ministers will begin this September. Please give serious consideration to this question: "Would my gifts and talents be put to good use as a Stephen Minister?"

Answering God's call to serve as a Stephen Minister begins with 50 hours of stimulating and useful training in Christian Caring skills. This training is led by trained Stephen Leaders and includes a variety of topics such as listening, Christian assertiveness, maintaining boundaries in caregiving, and grief. The training is distinctively Christian and focuses on God as the one who cures as we care. Working under supervision our Stephen Ministers are available to meet weekly with persons experiencing problems such as bereavement, single parenting, job loss, terminal illness, loneliness, or long-term hospitalization.

While being a Stephen Minister requires

commitment of time and effort, it also brings joy and fulfillment. It may be one of the most rewarding challenges you will ever embrace. In addition, you will use the skills you learn not only with your caring ministry, but also in your everyday relationships with family, friends, neighbors, and coworkers.

Think and pray about this opportunity for ministry. If you are interested in becoming a Stephen Minister, please contact one of St. Luke's Stephen Leaders – Pam Rowley, Bryan Hutchinson, Sherry Merrill, Doug Rowley, Sallie Suby-Long, and Sue Townsend – or if you want to know more about Stephen Ministry, talk with one of our ministers shown on the bulletin board in the Fellowship Hall. Applications for the next training class will be due August 1st. You may pick up an application from Pam Rowley or any Stephen Leader. Remember, when God calls you to service, God also provides the faith and gifts you will need. We are excited to see what God is going to do in the lives of those who undertake this ministry!

BEHIND THE SCENES

Our **Welcome Team** has been up and running for almost 2 years. This wonderful team makes visits to our guests who have recently attended St. Luke's. They welcome these folks armed with love for their church home, a warm smile and a gift bag full of information. Visits take less than 10 minutes (unless you end up chatting for awhile!), only do 1-2 a month (the more people on the team, the less visits), stay within your neighborhood and make a world of difference for the new guests! Please thank the following servants of this ministry and if you are interested in joining this team contact Lynda Fickling at lynda@stlukeshr.com or x20: Manijeh Badioazamani, Bill and Judy Dearasaugh, Dee and Jean Ann Duncan, Bill and Joan Goddard, Dave and Maria Fornof, Ron and Suzanne Humphreys, Bill and Ann Roadarmel, Wally Sackett, Floyd and Connie Shoemaker, and Nancy Obertier! Thanks for your time and dedication!

Another team you may not know about (unless you just visited for the first time!) is our **Guest Calling Team**. This team calls our first time guests after their first Sunday at St. Luke's. A friendly "hello and thank you for being our guest" is what this team does to make a stranger feel welcome. If you have time to do this once a month, usually 1-3 calls (less if more people join the team) contact Lynda Fickling at lynda@stlukeshr.com or x20. Please thank these servants for tending to our new guests with love and care: Don and Alberta Haas, Carolyn McIntosh, Susan Johnson, Sherry Merrill, Ron and Suzanne Humphreys. We appreciate your representation of us all!

Teams like these are behind the scenes making a huge difference to our church home. If you have a passion for serving on one of these teams contact Lynda Fickling.

St. Luke's Annual Church Picnic!

Sunday, August 6, noon-2:00pm

Bring your picnic blanket along for a special Sunday with your St. Luke's family. Celebrate the closing of summer and coming back together with your church home friends. Hot dogs, hamburgers, old fashioned games, and how about some water balloons? Please bring the following items to share if your last name ends with:

A~L: Dessert

M~Z: Side dish (salads, chips, etc.)

If you would like to help grill for this event (need a grill or two!, plus a few cooks!) please contact our Fellowship Event Team Leaders: Lisa Lehnus lehnus@yahoo.com 303-346-8114 or Trudy Turner trudyturnerhrco@aol.com 303-791-1078.

CONGRATULATIONS 2006 GRADUATES!



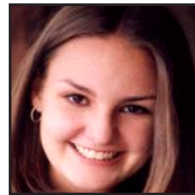
Zach Alexander
Highlands Ranch HS
University of Colorado



David Ashby
Mountain Vista HS
University of Colorado,
Boulder



Alex Balu
Mountain Vista HS
United States Navy



Emmy Bauer
Mountain Vista HS
Colorado College



Justin Boggy
ThunderRidge HS
Arapahoe Community
College



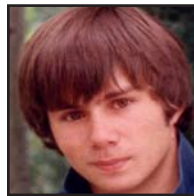
Tiffany Clement
Mountain Vista HS
University of Wyoming



Ben Coryell
Cherry Creek HS
Western State College,
Gunnison, CO



Erica Eliassen
BA Forensic Psychology
City University
of New York



Alex "Aefr" Fort
Douglas County HS
University of Northern
Colorado, Greeley



Shawn Funk
BA Music
Western State College of
Colorado, Gunnison



Michelle Gilman
ThunderRidge HS
Midland Lutheran
College, Fremont, NE



Stephanie Gilman
BA Elementary Ed
University of Montana,
Missoula, MT



Matt Goodstein
Highlands Ranch HS
University of Colorado,
Boulder



Amanda Hensen
Mountain Vista HS
University of Colorado,
Boulder



Leah Hughes
ThunderRidge HS
Arapahoe Community
College



Ari Hutchinson
Littleton HS
University of Denver



Cassie Johnson
ThunderRidge HS
Metropolitan State
College



"Katie" Johnston
Mullen HS
Rocky Mountain College,
Billings, MT



Travis Kinney
Douglas County HS
Metro State College



Shannon McKinnon
Mountain Vista HS
University of Denver



Melissa McKitterick
Cherry Creek HS
Vanderbilt University,
Nashville, TN



Kelsey Meier
Highlands Ranch HS
Arizona State
University, Tempe



Mike Outcalt
Mountain Vista HS
Colorado State
University



Matt Plamp
Mountain Vista HS
University of Wyoming,
Laramie



Jenelle Rhodes
ThunderRidge HS
Colorado State
University



Beth Richards
ThunderRidge HS
Colorado College



Alyssa Stark
Mountain Vista HS
University of Northern
Colorado



Katie Van Horne
Highlands Ranch HS
University of Colorado

CHILDREN'S MINISTRIES



Jenita Rhodes
Director of Children's
Ministries



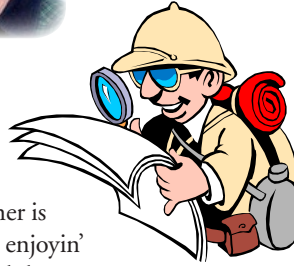
Lynne Butler
Preschool Ministry
Coordinator



Kristina Linn
Childcare Coordinator



Kay Swanson
Director of



Sly, Jr End of Year Blast! June 4th
6:00-8:00pm Sly, Jr. Family Barbecue for all 5th
(next year's 6th graders) and 4th (next year's 5th
graders) AND THEIR FAMILIES!!!

Hamburgers, hot dogs and drinks will be provided.
Each family is asked to bring a side dish or dessert
to share. We will have backyard games and a short
program. Please bring yard chairs or blankets for
eating and sitting.

Mission Mania! Our Summer Mission outing
for the 5th & 6th graders and their friends will begin
Friday, June 9th. Twice a month (6/9, 6/23, 7/7,
7/21, 8/4 & 8/18) we will go to an area organization
to learn about their program and help as we are able.
We will meet at the church at 10:00am and return
by 1:00pm. Bring a sack lunch (with something to
share for those who forget), sunscreen and a water
bottle. A current Permission Slip is required for
all who attend. Sign up by emailing Jenita at
jenita@stlukeshr.com. Adults are needed to help
drive and supervise. Please contact Jenita Rhodes
with questions or to volunteer.

**Beginning June 4th there will be
NO 11:00am Sunday School.**

Our 11:00am program will begin again on
September 10, Kick-Off Sunday!

Promotion Sunday Sunday June 4th at
9:30am we will promote all of our children ages 2
(by Sept. 15 of last year) through 6th grade to their
2006/2007 classes!! Parents; your children will begin
their Sunday morning activities in their regular
classroom but will move to their new classroom
after music or opening. June 4th is also Pentecost
Sunday and we will be celebrating the Birthday of
our Christian Church with a cupcake and candle for
all! See you there!

Summer Acolytes Acolytes, we still need
you through the summer months! Check the website
for the schedule and email Jenita with the dates
and time you will be here to light our altar. (The
schedule in on the home page under Quick Links
near the bottom of the list.)

**Become a
Treasure Seeker
this Summer!**

Summer is
a time for kickin' back and enjoyin'
the sun, but we still need adults to serve in
our Sunday School at 9:30. Our theme this summer
is *ADVENTURE OF THE TREASURE SEEKERS*.
We will explore several of God's promises as we dig
into the Old and New Testament. Each Sunday
our children will become archaeologists by finding
a treasure in the Discovery Dig, they will create an
artifact, learn a song and play a game. Everything is
planned and there ready for you. Just read the story
and come and have a great time sharing the love God
shows us with every day. Contact Jenita Rhodes at
the church office or by email at jenita@stlukeshr.com

Wacky Wednesday's Summer Fun for
children 3 years-3rd grade. This year our children
will learn about God's Creation of our world through
music, crafts, stories and games. The day begins at
9:30am and ends at noon. The dates are June 14, 21,
July 12, 19, 26 and August 2. Registration ended in
May, but there may still be some openings on certain
dates. Contact Tami Clement at 303-791-1982 or
email at tami@stlukeshr.com for questions. The fee
is \$15.00 per child, per day.

**Sunday School Registration for the
2006-2007 Year** Registration and volunteer
forms have been mailed to all families with children
in Nursery through 6th grade. Please return your
form by Sunday, July 2. The information on this form
will help us keep our data base up to date (be sure to
give us your current email address) and allow us to
determine class sizes and schedule the proper number
of adults in each classroom. Please prayerfully consider
the importance of your commitment to our children
and give generously of your time and talents.

VBS - June 26th-30th St. Luke's lower
level will be transformed into a tropical paradise for
Son Treasure Island, St. Luke's 2006 Vacation Bible
School. Every day, children, age 3 (by September
15th) through kids going into 5th grade, will learn
about how God treasures them through games, crafts,
music, snacks, skits and Bible stories. Registration
forms are available in the church office and are due
by May 30th or when the program is filled. With
questions please contact Lynne Butler x11.

Fri. June 9

*Sly, Jr. Mission Mania begins
(6/9, 6/23, 7/7, 7/21, 8/4, 8/18)*

Sun. June 11

Summer Sunday School Starts

Tues. June 20

*Children's Ministry Education
Team Meeting 7:00-8:30pm*

Wed. June 14

*Children's Ministry Fellowship
Team Meeting 9:30-11:00am*

Wed. June 7

Adult VBS Study 9:30-11:00am

Wed. June 14

*Wacky Wednesday (1)
Adult VBS Study 9:30-11:00am*

Wed. June 21

*Wacky Wednesday (2)
Adult VBS Study Ends 9:30-11:00*

June 26-30

Vacation Bible School

Sun. July 2

*VBS kids sing in Worship
4th of July Holiday Weekend
- NO Sunday School*

Wed. July 12

Wacky Wednesday (3)

July 13-17

Family Camp

Wed. July 19

Wacky Wednesday (4)

Wed. July 29

Wacky Wednesday (5)

Wed. Aug. 2

Wacky Wednesday (6)

Sun. Aug. 6

All Church Picnic

Sat. Aug. 19

*Children's Ministry Orientation
Workshop 8:30-11:30am*

Tues. Aug. 22

*Children's Ministry Orientation
Workshop 6:30-9:00pm*

Sun. Aug. 20

Nursery Orientation 12:30-2:00pm

CONNECT IN 2006



Servant Spotlight: Dave Rhodes

by Jill Wright

You may not be personally acquainted with Dave Rhodes, but you've most certainly seen him around St. Luke's. Whether he's serving up pancakes at special breakfasts or belting out tunes in the choir, Dave is one of the many St. Luke's folks who help make things happen.

Originally from Kansas, Dave and wife Jenita (St. Luke's Director of Children's Ministries) have been together since shortly after high school. They lived many years in Kansas City, then Pueblo, before settling in Highlands Ranch in 1991. With two young children in tow – Doug is now 20, Jenelle is 18 – they thought it was time to establish some church roots.

The Rhodes family set out to find a spiritual home with a welcoming, community feeling.

"At the time there seemed to be all these 'mega churches' popping up, where you could lose yourself in the crowd, but we weren't looking for that," Dave says. "We were looking for a place to belong."

They found what they were looking for in St. Luke's. And St. Luke's, at least physically, looked a lot different in 1991!

As an electrical engineer in the building design profession, Dave saw that "no money was wasted" in the construction of the church, which at the time consisted only of the Fellowship Hall, which served as the sanctuary, and semi-finished, concrete-walled basement classrooms. He soon found himself serving on the Futures Committee, which quickly resolved that St. Luke's needed more space, not only for the rapidly expanding membership but also to accommodate the large number of children that came with these new families.

Dave's professional background made him ideally suited to chair the Building Committee, which undertook two major building expansions. The first, around 1993, expanded the fellowship hall about ten yards northward, creating what is now the Narthex and the two classrooms on the western-facing side of the Narthex, as well as much needed classrooms in the basement. In 1995, the modern sanctuary was added, along with additional classrooms, music and other rooms in the newer half of the basement.

For the next five years, Dave served as chair of the Trustees Committee, which oversees all facility concerns. Dave was instrumental in planning the St. Luke's kitchen upgrade to a commercial kitchen. A cooking hobbyist who "likes doing things on a large scale," Dave soon became a familiar sight in the kitchen. Over the years he has flipped thousands of pancakes and whipped up meals for special dinners, such as the *Fiddler on the Roof* benefit dinner last fall. He has roasted pigs for Ministry Fairs and has replaced dozens of light bulbs both inside and outside the building.

St. Luke's isn't all about work for Dave. Music is his biggest hobby, and he indulges his harmonic pursuits by singing in the Chancel Choir and Grace Notes, and playing his trumpet in the Brass Ensemble and the Ministers of Swing.

"You can either go to church or belong to a church," says Dave. "I choose to belong. I have lots of friends here. It's a family, and you do stuff with your family."



Women of St. Luke's

The *Women of St. Luke's* will host their first church-wide **Baby Shower in the Fall** of 2006. All new mothers of the church will be invited to attend. Plans are to give a gift basket to each new mother. The group is asking any other groups or circles within St. Luke's to donate a small gift to include in each of the mothers' baskets. If interested in donating, contact Amy Ash at 303-799-6079 or aash71170@comcast.net

Attention All Album Makers! Come join the Scrapbook Circle for some fun fellowship and time to work on your latest photo project!

• **June 23rd** - Meet at Archivers (University and Colorado, by Whole Foods) for an evening of fun. Please RSVP directly to Archivers. Their fee is \$15 for the evening. This includes dinner, demos, a gift, and prizes. The hours are 5:00-11:00pm, but you can show up whenever you like, as long as you pay in advance. Please also email Christy to let her know to look for you there.

• **July** – Summer Break, no meeting

• **August 15th** – 7:00-10:00pm in Fellowship Hall. Please RSVP to Christy.

If you can't make any of our summer dates, please keep working on your albums independently and we hope to see you in the fall!

If you have any questions please call or email Christy at jcwohleber@qwest.net or 720-344-3516.

Contagious Joy! That's the theme for this year's *Women in Faith Conference*. America's largest women's conference comes to Denver's Pepsi Center from September 22-23. Speakers and special guests will guide you through this 2-day spiritual conference. Things kick off Friday at the pre-conference titled "All Cracked Up". The focus this day is learning God's ability to use you, no matter how cracked or broken you feel. You'll laugh through the day! Friday night and Saturday is the main conference where you'll feel "Contagious Joy" in the music and words of the speakers as they explain how you can get it, keep it and spread it around. It's about God's plan for you.

Here is some general information for you, and watch for more to come! Please contact Pam Rowley at x32 or pam@stlukeshr.com, if you are interested in hearing more about the conference.

"All Cracked Up" Pre-Conference

Friday, September 22, 9:00am-3:00pm

"Contagious Joy" Conference

Friday, September 22, 7:00-9:30pm and Saturday, September 23, 9:00am-5:00pm

Pricing – Register by July 14 for early bird pricing:

Premium package (best seats!) \$119.00 • Standard package \$99.00

(Packages include pre-conference, conference, box lunch both days, free workbook)

Premium seating \$75 • Standard seating \$55 • Box lunch \$8

Heart Spa – Where Women are Refreshed in Faith!



Indulge... Relax... Unwind... Enjoy! The *Women of St. Luke's* would like to invite you to a *Spa Retreat Night* on Friday, June 16th. The Spa Night will be held in the Fellowship Hall from 6:00-10:00pm. Please watch the email loop and church bulletin for more information!

In the meantime, please mark your calendars and contact Amy Ash at 303-799-6079 or aash71170@comcast.net, if you are interested in joining us for a "night of pampering".

MUSIC & DRAMA



James Ramsey
Director of
Worship & Arts



Carrie Mallory
Associate Dir. of
Music Ministry



Kay Coryell
Assistant
Music Director

St. Luke's Performing Arts Academy: June 26-30

Because there is such a strong interest in drama for children and youth, another opportunity that we are launching this year is The St. Luke's Performing Arts Academy which will feature drama and music classes that will take place June 26-30 in the afternoon after VBS. The focus of this academy will be to channel the energy of and create a safe space to build confidence and skills for our younger generation at St. Luke's. Space is limited for this academy. Pick up registration forms in the office or contact Jim Ramsey or Sharon Oliver for more information (sharonoliver@pcisys.net or 303-791-7302.)

The Sound of Music Begins Production

First of all, thank you for the overwhelming response and interest for this year's Drama Ministry production of *The Sound of Music*. We had almost 140 people audition and with so many talented children and adults, casting the show was extremely difficult. In addition, finding a way to include everyone in this popular ministry at St. Luke's has proven to be a real challenge but we've come up with some creative opportunities. The Drama Ministry has grown exponentially over the past 5 1/2 years and it's a true joy to see so many people involved.

Mark your calendars: Performance dates will be Nov. 2, 3, 4, & 5, 2006.

If you'd like to be involved in the production behind the scenes please contact Jim Ramsey (jim@stlukeshr.com) or Sharon Oliver for more information (sharonoliver@pcisys.net or 303-791-7302.)

Meet the Director of St. Luke's *The Sound of Music* Production – Dr. Leigh Holman



We are so pleased to bring the experience, talent and exuberance of Dr. Leigh Holman to our production of *The Sound of Music* this fall as our Artistic Director.

Before receiving a Doctorate of Musical Arts degree in Vocal Performance and Pedagogy from the University of Colorado at Boulder, Ms. Holman sang professionally with the Resident Artists of Portland Opera, Nashville

Opera, Opera Theatre of Rochester and toured nationwide with the National Opera Company singing over 70 performances of the title role in *L'Italiana in Algeri*. Some of her other favorite roles include Cherubino in *Le Nozze di Figaro*, Hansel in Humperdinck's *Hansel and Gretel*, Cenerentola in Rossini's *La Cenerentola* and Beatrice in Berlioz' *Beatrice and Benedict*. Her musical theatre credits include Maria in *The Sound of Music*, Reno Sweeney in *Anything Goes*, Aunt Eller in *Oklahoma*, The Stepmother in *Cinderella*, Hodel in *Fiddler on the Roof* and Bianca in *Kiss Me Kate* among others. Audiences most recently heard her sing the role of Maddalena in Wildwood Opera's production of Verdi's *Rigoletto*.

Holman began her interest in stage directing while working with Director Richard Pearlman as his assistant director for the production of *La Bohème* at The Eastman School of Music. There she received a full fellowship in the Masters in Opera program. In recent years she directed/asst. directed for opera, music theatre and straight plays including *Hansel and Gretel*, Copland's *The Tender Land*, *The Mikado*, *The Telephone*, Poulenc's *Les Mamelles de Tirisias*, *Don Giovanni*, *Falstaff*, *The Merry Widow*, *Amahl and the Night Visitors*, *Die Fledermaus*, *Red, Hot and Cole*, *Side by Side* by Sondheim, *Amadeus*, *The Odd Couple*, *Joseph and the Amazing Technicolor Dreamcoat* and *A Funny Thing Happened on the Way to the Forum*.

Dr. Holman served as Coordinator of Voice and Opera Studies and Opera Director at the University of Arkansas at Little Rock from 2002-2005 and is currently an instructor of music at the University of Colorado at Boulder College of Music and Director of CU Summer Opera.

Summer Choir - Open to ALL!

If you've always wanted to sing in the choir at St. Luke's but couldn't because it's on Thursday nights, or you're too busy, out of town most of the time, love music but not sure if you can do it, or anything else, then this is the time and place for you. Our Summer Choir will begin again in June and sing once a month during services until regular rehearsals for the Chancel Choir begin again the first week of September. All are welcome!

Summer Choir schedule:

- Sat., June 17: 8:30-11:30 Retreat
- Sun., July 9: 9:30 & 11:00 services
- Sun., June 18: 9:30 & 11:00 services
- Sun., August 6: 9:30 & 11:00 services

Summer Choir sings the music ministry during both services. After the music ministry at 11:00, the choir will exit the service. If you have any questions or need more information, please contact Jim at jim@stlukeshr.com.

Ensembles Go on Break for the Summer

Many of our music ensembles will begin their summer break starting on Memorial Day Weekend. However, a few will meet sporadically throughout the summer. If you are interested in joining any ensembles, please go to the website for contact information at www.stlukeshr.com and click on the music and drama link or contact James Ramsey at jim@stlukeshr.com. Regular rehearsal schedules will begin in mid August or the first week of September for all music ensembles.

For a complete listing and contact info for all of our ensembles and information on upcoming opportunities please visit stlukeshr.com.

Ballroom Dancing Lessons

Need to dance at your daughter's wedding? No problem! Stephen and Cathy Collins are teaching a crash course in ballroom dancing this June in only two short weeks! That's right! Four lessons and only two weeks!

- Tuesday, June 13 & Wednesday, June 14 – 7:00-8:30pm
- Tuesday, June 20 & Wednesday, June 21 – 7:00-8:30pm

Come learn the three basic dances you need to survive an upcoming wedding in your life: the foxtrot, the waltz, and the jitterbug. We'll cover some country variations, too. If we have time, we'll cover a few other basic dances including cha-cha and rhumba. And if the class moves really quickly, then we'll also learn several popular folk dances of Cleveland!

Don't miss out on this great opportunity! Learn to dance and only suffer deep and lasting ridicule and embarrassment for two weeks! Yes, you can do it! Come and enjoy the fellowship. Call Stephen or Cathy Collins at 303-346-0275 to register or sign up at the Fellowship Hall. Slick soled shoes preferred, particularly if worn on your feet.



DON'T MISS!

June 2006

- 6/1 – STM Painting Day 9am-1pm
- 6/4 – Regular SLY AM 9:30am
SLY PM – Summer KickOff!
Pool Party 4-8pm
- 6/9 – GEMS Spa Night 6-9pm
- 6/11 – Regular SLY AM 9:30am
Regular SLY PM 6:30-8pm
- 6/13 – District Volleyball 6-8:30pm
- 6/16 – GEMS Jr. High Lock-In
- 6/18 – No SLY AM or SLY PM
(Father's Day)
Have fun with Dad!!!
- 6/20 – GEMS Raft & Camp
Overnight
- 6/20 – District Volleyball 6-8:30pm
- 6/21 – STM Wed. Dinner 6pm
- 6/22 – Breakfast Club 10am @
Einstein's
- 6/25 – Regular SLY AM 9:30am
Regular SLY PM 6:30-8pm
- 6/27 – STM Body Worlds 2,
9am-1pm
- 6/27 – District Volleyball 6-8:30pm
- 6/28 – STM Wed. Dinner 6pm
- 6/29 – Breakfast Club 10am @
Einstein's
- 6/29 – GEMS CreARTive Studio
11am
- 6/30 – Summer Lock Out
8pm-8am

July 2006

- 7/1 – End of Lock Out 8am
- 7/2 – Regular SLY AM 9:30am
Regular SLY PM 6:30-8pm
- 7/5 – STM Wed. Dinner 6pm
- 7/6 – Breakfast Club 10am @
Einstein's
- 7/7 – GEMS Hiking 9am-1pm
- 7/9 – Regular SLY AM 9:30am
Regular SLY PM 6:30-8pm
- 7/11 – District Volleyball 6-8:30pm
- 7/13 – Breakfast Club 10am @
Einstein's
- 7/16 – Regular SLY AM 9:30am
Regular SLY PM 6:30-8pm
- 7/18 – District Volleyball 6-8:30pm
- 7/19 – STM Wed. Dinner 6pm
- 7/20 – Breakfast Club 10am @
Einstein's
- 7/20 – GEMS Bowling 1-3pm
- 7/22 – Renaissance Festival
9am-4pm
- 7/23 – Regular SLY AM 9:30
Regular SLY PM 6:30-8pm
- 7/25 – District Volleyball 6-8:30pm
- 7/26 – GEMS Rock Wall Climb
- 7/26 – STM Wed. Dinner 6pm
- 7/27 – Breakfast Club 10am @
Einstein's
- 7/30 – Regular SLY AM 9:30am
SLY PM – Waterworld
noon-7pm

SLY: ST. LUKE'S YOUTH



Ann Smith
Assistant
Youth Director

Chris Wilterdink
Director of
Youth Ministries

STM (Shortcuts To Manhood)

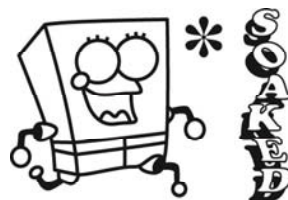
For all guys grades 7-12

- Painting Day: June 1, 9:00am-1:00pm, FREE
- Body Worlds 2: June 27, 9:00am-1:00pm, \$15
- Renaissance Festival: July 22, 9:00am-4:00pm,
\$15 tickets
- Indoor Skydiving: August 9, 9:00am-noon, \$40
- Wednesday Night Dinners: every week
at 6:00pm, \$ varies

RSVP for all STM events:
chris@stlukeshr.com

*SOAKED Summer Weekly Events

- **Tuesday Night Volleyball** Starting 6/13 at 6:00pm. Meet here at St. Luke's to carpool to other area churches and play volleyball with other youth groups.
No skills necessary, we love Slurpees after we play!
- **Breakfast Club** Thursday Mornings at 10:00am starting 6/15. Meet at the Einstein's Bagels on HR Parkway & Broadway (in the Safeway shopping complex) for discussion and a weekly devotion with Chris and Lori McMullen.
- Regular **SLY AM** all summer long during the 9:30 service
- **SLY PM** all summer long, but no dinner!
Our schedule for Summer SLY PM is 6:30-8:00pm



GEMS (Girls Enrichment Ministries)

For all girls grades 7-12

- Spa Night: June 9, 6:00-9:00pm, \$5
- Jr. High Lock-In: June 16-17, 6:00pm-9:00am, Free
- Raft & Camp: June 20-21, 2:00-7:00pm, \$100
- CreARTive Studios: June 29, 11:00am-2:00pm, \$15
- Hike: July 7, 9:00am-1:00pm, Free
- Bowling: July 20, 1:00-3:00pm, \$7
- Rock Wall Climbing: July 26, time TBD, \$7
- CO Springs Day Trip: August 2, 9:00am-4:00pm, \$15

RSVP for all GEMS events:
ann@stlukeshr.com

SUMMER LOCK OUT

*June 30, 8:00pm-July 1, 8:00am
\$40 for everyone 7-12th*

- Mystery Trips around Denver and awesome activities to keep you and your friends up all night long!
- Get a registration sheet (bulletin boards) and \$40 to Chris or Ann by June 25!**

Help the Youth Mission

Teams buy building supplies for this summer's trips to Biloxi & Alamosa!

- Buy Water Bottles & License Plate Holders after church on Sundays.
- Get your car washed on June 3 by the Sr. High Mission Team
- Donate Home Depot Gift Cards for building supplies

30-HOUR FAMINE

We are tremendously blessed in so many ways that it can sometimes be difficult to relate to the stories of poverty and hunger that permeate the news every day. But if we are to care about and then care for those that are hungry, it is important that we understand what it means to be hungry.

To this end, St. Luke's invites all Youth to participate in the **30-Hour Famine** to be held August 5-6. The Famine offers youth in grades 6-12 the opportunity to experience the pain of hunger and the joy of service to others within the safety and fellowship of their peers. Like last year, the Famine will include service opportunities, fun activities, local adventure and FUN!

Sign ups will be available on the Youth boards upstairs in Fellowship Hall and downstairs between the Coke machines. For more information, contact Ann Smith 303-791-0659 x19.

FINANCIAL UPDATE



Dave Cupp
Director of Finance

Staying Current With Giving Key To Program Success

I want you to know where we stand financially – all the time. Keeping you informed will allow you to respond responsibly.

The trend in our income stream indicates the income side of our budget deserves most of our attention. At the end of April our income was about \$24,000 short of budget. This is an improvement over the \$40,000 shortage reported at the end of March. However, April was a generous month in that we enjoyed the benefits of Easter Sunday and a fifth Sunday. May is not looking great. After the first two Sundays it is looking more like the trend we had established before April.

Everyone staying current with their giving is the key to getting us on track for a successful year. A review of our contribution records at the end of April indicated that about 35% of those who have pledged were about 35% behind in their giving. This represents about \$35,000. Thus, if everyone was current, our budget would look great. Yes, it seems odd that “35” is such a common number. All the numbers were close enough to “35” that I thought using it three times would be great for emphasis.

I don't mean to overlook the importance of the expense side of the budget. The good news is that we have managed to stay within the budget. Total expenses are a little under what we had planned. We will continue to monitor the expenses and reduce them when possible.

I encourage everyone to stay current and when possible include a few extra bucks in your giving. I'm convinced that all of us working together toward our common goal will make 2006 our first break even year in several years.

Always remember that some of us are having good financial years and others are not as fortunate. Everyone doing their best smoothes the ups and downs and keeps St Luke's on track.

Vacation Time Is Near – Don't Forget to Sign Up For Electronic Funds Transfer:

Why worry about getting your checks to the Church while your away on vacation or business? Give yourself some relief. Sign up for the Electronic Funds Transfer (EFT) program that will automatically do the paperwork for you. It's easy. You fill out the form indicating monthly or semi-monthly withdrawals, the date(s) you want withdrawals to happen and get the form along with a voided check to me.

You can now use the Electronic Funds Transfer program to purchase grocery certificates.

Authorize the amount you want deducted from your bank account each month for this purchase. Your grocery certificates will be waiting for you at the grocery certificate table in the Narthex. Contact Dave Cupp at x24 or stop by the grocery certificates table on Sunday mornings.

TRUSTEES CORNER

Securing St. Luke's: Evacuation Plan

by Sandi Miyaki

The next phase in improving our security process is to plan and publish our evacuation plan in the event of a fire or other situation where we need to get everyone out of the building quickly. We've posted signs in numerous locations throughout the building. Please take a moment to become familiar with them.

Our evacuation plan is very simple – find a door marked EXIT, and proceed outside until you are, a safe distance from the building.

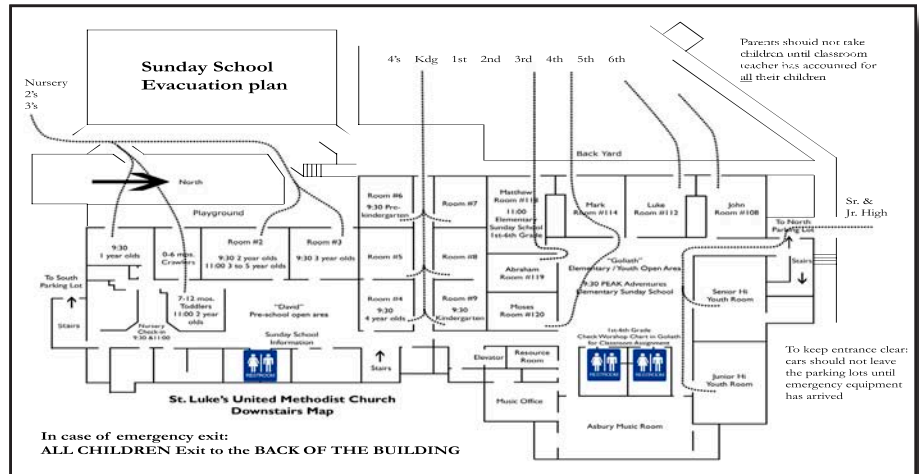
From the sanctuary, the doors at the front on either side of the pulpit are clearly marked EXIT. For anyone near the back, please exit out the west onto the deck, down the stairs and into the back yard or out the front door as you are able. On the main floor, anyone needing to leave without stairs should use the main entrance. Our ushers and staff are trained to watch for and assist people who have mobility challenges.

Note for parents or guardians with children in our education and nursery programs:

DO NOT go downstairs to get your children. All of our teachers and staff have been trained to gather up the children in their class and proceed out exterior doors to a safe distance from the building. We've got processes in place to make sure bathrooms are checked as well. Our nursery attendants will gather the little ones and exit through their back door as well. Since nearly every classroom has a door leading directly outside, this will happen very quickly.

With our narrow interior hallways on the lower level, this plan is simply the fastest and safest for everyone. Once everyone is outside, families will locate their children with their teachers outside. Following our standard procedures, teachers will reunite children with their families away from the building, allowing emergency personnel swift and open access to the problem that initiated the need for an evacuation.

Please talk with your children about this plan so they know to stay with their teacher for you to come to get them. Watch for a ministry moment in upcoming services where we'll review the process on a regular basis so everyone knows the plan and if we ever need to, we can conduct a swift and safe evacuation.



Nametags... yes, NAMETAGS!

In order for us to be a community, to really be St. Luke's, we need to put a larger effort on being relational. Please remember to wear your nametag! Take a moment prior to the service and search for that nametag. There will be a sign-up sheet hanging for you to request one or a replacement. They will be organized in alphabetical order, so please help to maintain them in that way. Thank you for participating! And remember that together we can be a relational community!

HELLO!





The CHRONICLE

St. Luke's United Methodist Church

8817 S. Broadway • Highlands Ranch, CO 80129

303-791-0659 • www.stlukeshr.com

NON-PROFIT
ORG
**U S POSTAGE
PAID**
PERMIT #7
LITTLETON, CO

UPCOMING SERMONS

June 11: Choices that Turn the World Upside Down

— *Rev. Janet Forbes*

June 18: An Open Letter to a Gay Son — *Rev. Janet Forbes*

June 25: *Dr. Don Messer* preaching

St. Luke's United Methodist Church welcomes you to our Christian family, where we share life. Wherever you are in your faith journey, you are accepted and encouraged to grow spiritually.

Join us in growing together toward full humanity through living the teachings of Jesus: Love, Acceptance, Justice and Hope.

RED CROSS BABY SITTING CLASS

Sat. June 10 – 9:00am-4:00pm

If you know someone 12 years old or older who would be interested, please respond to Jenita Rhodes by email or phone. Cost \$65. Bring a brown bag lunch and a water bottle. Participants do NOT have to attend St. Luke's. Red Cross certified can add their names to the St. Luke's Baby Sitter list available in the Little School or church office.

JUNE/JULY 2006 CALENDAR

Sunday	Monday	Tuesday	Wednesday	Thursday	Friday	Saturday
June 11 Sr. Hi Mission Trip 8, 9:30, 11am: Worship 6:30pm: SLY PM	12 Sr. Hi Mission Trip 6:30pm: Women's Night Out 7pm: Trustees Meeting	13 Sr. Hi Mission Trip 7pm: Adult Ed Planning 7pm: Ballroom Dancing Lessons	14 Sr. Hi Mission Trip 7pm: Ballroom Dancing Lessons	15 Sr. Hi Mission Trip	16 Sr. Hi Mission Trip 6pm: WoSL Spa Night 6pm-9am: GEMS Jr. Hi LOCK-IN	17 Sr. Hi Mission Trip
18 FATHER'S DAY 8, 9:30, 11am: Worship NO SLY Activities	19 7pm: SPRC	20 7pm: Ballroom Dancing Lessons	21 6pm: STM-Wed. Dinner 7pm: Ballroom Dancing Lessons	22	23 10am: Mission Mania	24
25 Family Mission Trip 8, 9:30, 11am: Worship 6:30pm: SLY PM	26 Family Mission Trip 9-noon: VBS 12:30-4:30: PA Academy	27 Family Mission Trip 9-noon: VBS 12:30-4:30: PA Academy	28 Family Mission Trip 9-noon: VBS 12:30-4:30: PA Academy 6pm: STM-Wed. Dinner	29 9-noon: VBS 12:30-4:30: PA Academy 11am: GEMS Art Studio	30 8pm-8am: SLY LOCK-OUT	JULY 1
2 VBS Performance 8, 9:30, 11am: Worship 6:30pm: SLY PM	3	4 INDEPENDENCE DAY	5 6pm: STM-Wed. Dinner	6	7 9am: GEMS Hike 10am: Mission Mania	8
9 Pastor Immersion Experience Jr. Hi Mission Trip 8, 9:30, 11am: Worship 6:30pm: SLY PM	10 Pastor Immersion Experience Jr. Hi Mission Trip	11 Pastor Immersion Experience Jr. Hi Mission Trip 7pm: Adult Ed Planning	12 Jr. Hi Mission Trip Wacky Wednesdays	13 Jr. Hi Mission Trip Family Camp	14 Jr. Hi Mission Trip Family Camp	15 Jr. Hi Mission Trip Family Camp
16 Family Camp 8, 9:30, 11am: Worship 6:30pm: SLY PM	17 Family Camp 7pm: SPRC	18	19 Wacky Wednesdays 6pm: STM-Wed. Dinner	20 1pm: GEMS Bowling	21 10am: Mission Mania	22 8:30am: Summer Saturdays