



Highlands Ranch, Colorado

The CHRONICLE

June/July 2007

ST. LUKE'S UNITED METHODIST CHURCH

Inside This Issue:

Bold Venture Update.....3
2007 Graduates.....5
Children's Ministry.....6
Family Camp.....6
Golf Tournament.....7
Adult Ed.....8
SLY.....10
Financial Update.....11
and much more!

Get Oriented!

Orientation of St. Luke's
Summer Schedule

9:30am - Sunday
June 17 or 24 or
July 15 or 22!



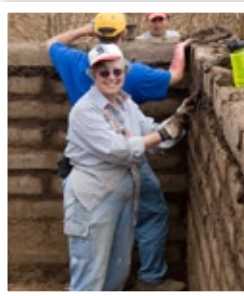
Pick any one of the above 4 Sundays, grab a cup of coffee and a donut and meet some new friends while exploring what St. Luke's is all about! Whether you have been here for one Sunday or one year, this orientation will help you become familiar with our ministry and education programs, fellowship opportunities, and the mission and vision of our church. Meet Lynda in the fellowship hall by the "Get Connected" table! Questions, contact lynda@stlukeshr.com 303-791-0659x20.

A "Big Bad" Success!

Children's Dinner Theater – May 2007

by Lynne Butler & Sharon Oliver

The Methodist Board of Discipleship named "justice" as the theme for the Christian Family Home in 2007. In keeping with that theme, on Friday, May 4th, a special "justice" event was held at St. Luke's. Many came to enjoy a delicious meal and then decide the fate of a very famous individual. In attendance were Fairy Godmother, Evil Stepmother, Cinderella, the Three Little Pigs, Prince Charming, Little Red Riding Hood, the Boy and Girl Who Cried Wolf, Goldilocks, Snow White and the Seven Dwarfs and many more. After dinner, everyone adjourned to the sanctuary to be serenaded by the Cherubs Choir and then to watch the trial of the century where Enchanted Forest News (EFN) reported live from the scene. The audience became the jury as the trial of the Big Bad Wolf unfolded in a play called "Big Bad" performed by the children of St. Luke's. Many of you know that Ms. Wolf has a bad reputation, but when the jury reached a verdict we found her innocent! It seems that she was actually just a lonely and misunderstood wolf in need of a second chance. This was a great example for children of all ages about seeing all sides of a situation and understanding a little bit more about forgiveness and justice. When it was all over, we raised almost \$1,000 to donate toward St. Luke's Bold Venture for our children's future! Many thanks to all of those who participated from the dinner crew to the actors to the parents behind the scenes. It was truly a community effort. Oh, and Miss Muffit will be glad to know that we learned what a tuff it is, too!



Guatemala Mission

by John Williams

This year St. Luke's mission trip to Lemoa, Guatemala took place from March 23 through April 1. Our group consisted of 28 from St. Luke's, 8 from the John Wesley Foundation in Boulder and our sponsors from Puravida, Mark and Lesly Ely. We can say we have now come close to filling a chicken bus to capacity.

This year's work added some new projects in which we were able to work with and directly impact several local families.



This year's projects consisted of building two mud block adobe homes for local widows; working on three chicken coops in the village of Chontala, so

the women can participate in a micro-loan program to raise chickens; tiling and stuccoing rooms at the Hogar del Nino Orphanage; and adding a new cement roof at the Retreat Center. We also had the opportunity to visit the Salud y Paz Medical Clinic in the village of Quetzaltenango, which is run by Dr. Phil Plunk. A medical mission trip may be one of our future opportunities. We are looking in to it.

During our visit to the John Wesley School, the

continued on page 2

Sunday Worship Services:

8:00am, 9:30am & 11:00am

Summer Sunday School:

Adult: 9:30am & 11:00am

Youth: 9:30am & 11:00am

Children: 9:30am

Nursery available for

9:30am & 11:00am services

Church Office: 303-791-0659

Fax: 303-470-5615

St. Luke's Youth.....x45

Childcare Reservations.....x47

Email: office@stlukeshr.com

Website: www.stlukeshr.com

Staff:

Rev. Janet Forbes.....x13

Senior Minister

Emergency: 303-241-9312

Rev. Pam Rowley.....x32

Associate Minister

Emergency: 720-348-1528

Rev. Dave Money.....x33

Associate Minister

Emergency: 303-932-1035

James Ramsey.....x23

Director of Worship & Arts

Carrie Mallory.....x35

Associate Director of Worship & Arts

Kay Coryell.....x43

Associate Director of Worship & Arts

Chris Wilterdink.....x14

Director of Youth Ministries

Susan Johnson.....x19

Assistant Director of Youth Ministries

Jenita Rhodes.....x27

Director of Children's Ministry

Lynne Butler.....x11

Assistant Children's Ministry Director

Kristina Linn.....x40

Childcare Director

Lynda Fickling.....x20

Director of Servant Ministry

Bonnie Funk.....x10

Church Secretary

Dave Cupp.....x24

Director of Finance

Janet Maxwell.....x16

Assistant Director of Finance

Barry Curtis.....x39

Facilities Manager

Kay Swanson...303-791-1982

Director of Little School

All articles, photos and
announcements for the
August issue of
The Chronicle are due
July 20th.

Editor: Sharon Oliver
chronicle@stlukeshr.com



Rev. Janet Forbes
Senior Pastor

GOT COMMUNITY?

This summer, I want to encourage us to grow as an inclusive, welcoming community. As we share our "growing-up" stories, we will learn about the vast differences in our diverse spiritual journeys. The religious background of St. Luke's is one-third Roman Catholic, one-third in a church relationship for the first time, and one-third Protestant. There are approximately 25 interfaith families, so we have both Jewish and Muslim members and constituents. About 10% of the congregation has Methodist roots. In the sharing of our traditions, we will come to enjoy a deepening spirituality in the intersections that our stories create.

In the conversation, I also hope to enlarge our religious literacy! Stephen Prothero in *Religious Literacy: What Every American Needs to Know – and Doesn't* writes that we may be "well beyond (thinking) that Sodom and Gomorrah were husband and wife, and Joan of Arc was married to Noah. But how do you compare those impassioned to have the Ten Commandments displayed in courthouses but unable to name half of them? Can you name the Five Pillars of Islam or who deliver the Sermon on the Mount?"

As chair of the religion department at Boston University, Prothero asserts that because religion has played such a critical role in the history of our world and country, we need to be better informed about faith – not only Christian faith, but other faiths as well. Not only are we un-informed, he grieves our ignorance! He gives this literacy test to his first year college students. How well do you fare?

- Name the four gospels in the New Testament.
- Name a sacred text of Hinduism.
- What is the name of the book of Islam?
- Where, according to the Bible, was Jesus born?
- President Bush in his first inaugural address spoke of the Jericho road. What Bible story was he invoking?
- What are the first five books of the Hebrew Bible (The Old Testament)?
- What is the Golden Rule?
- God helps those who help themselves. Is this in the Bible? If so, where?
- Blessed are the poor in spirit for theirs is the kingdom of God. Is this in the Bible? If so, where?
- What are the seven sacraments of the Roman Catholic Church?
- What are the 5 Pillars of Islam? The 4 Noble Truths of Buddhism?

Over the summer, we'll be listening to personal story and learning from each other the journey to God. It is my hope that we will increase our capacity to practice the spiritual discipline of hospitality. Diana Butler Bass in the book that the St. Luke's staff is currently reading together, *Christianity for the Rest of Us*, writes: "If emerging Christianity is, like its ancient ancestor, a faith of travelers, of pilgrims on the way, it should be no surprise that hospitality would, once again, find itself at the heart of Christian life. In our context, hospitality opens the possibility of "free space" where strangers become friends – and equally offers travelers safe passage through dangerous country."

Let us together create open space... free space... gracious space... community space by honoring our stories of coming to faith.



continued from page 1 missionaries were also able to meet their sponsored children along with their families. This was truly one of the highlights of the trip for many. Truly a blessing. Our three ½ day Bible Camp was a huge success. We had between 300-400 children in attendance each day, where they participated in different activities each day. Thank you, Kristina Carnes, for coordinating this year's Bible Camp.

This was St. Luke's 3rd consecutive year in serving the rural Village of Lemoa, Guatemala, and the results are now beginning to show. With your continued support we know that we will be able to make a difference for the children to get an education and help educate others in this process. The average education in the area is 3rd grade. We have, now this year with the support of the John Wesley School, our first 9th grade graduating this fall. We plan on adding the 10th-12th (career track) grades in the near future giving these children the ability to graduate from high school. This is now also my 3rd year of mission work to Guatemala with St. Luke's, and my continued belief has always been and will continue that it is "ALL FOR THE CHILDREN". They are the future. Please keep an eye on the bulletin for joining us next year for our Guatemala Mission.

With your generous donations this year we also were able to supply the John Wesley School with 147 new school desks to equip several new classes, provided approximately 60 families with one 2.5-kg canister of premium dehydrated whole milk. This will make five gallons of 4% milk, which will provide months of vital nutrition to chronically malnourished children in and around the rural village of Lemoa.



Rev. Les Ludlam
St. Luke's Lay/
Associate Pastor
1993-1997

More from Les: Lessons from the Clifton Dump

I learned some things about life years ago when I encountered a place called the "Clifton Dump."

Dumps, now known more euphemistically as "Land Fills," were in the days before recycling, they were the stopping off place for the unwanted, decaying, dangerous and ugly. Dumps lie at the bottom end of the economic scale, and yet they provide a very important function for our society. They accept all the "stuff" that we no longer want or need. They quietly receive that which would become offensive and possibly dangerous if we kept it in our homes too long. Dumps are just there. They give no warnings, they do not forgive. They may have hidden treasure, but we have to confront them if we are to find out what lies inside.

There was no such thing as trash collection by Fruitvale, on the east side of Grand Junction, where I lived in the 1940's. We had to haul our trash the Mesa county dump about once every two weeks or so.

I loved to go along. You just never knew what treasures you might find there! I would pick up some really neat things and bring them back home. And often, I would find them again in the trash we were taking back to the dump two weeks later.

It is long closed, but I learned at least three things from the Clifton Dump:

1. Things are sometimes more dangerous than they appear on the surface.
2. One person's trash may be another person's treasure.
3. Ugly is only temporary!

On one particularly nice Spring day, we had gone to the dump as usual. I was standing in the back of the truck. And as we finished dropping off our trash, and were preparing to go back home. My mom called back to me, "Leslie, come on up front, we are ready to leave and you can't ride back there."

It was a sunny spring afternoon, I was "feeling my oats," as they used to say, and felt particularly athletic after launching all sorts of items out of the bed of the truck. I spied a pile of coal ashes several feet beyond the tailgate of the truck and decided quickly that I would jump the chasm and land on the ash heap instead of simply climbing down out of the bed of the truck.

Why do something easy, if you can have more fun doing it another way!

I drew back a few steps, began to run, and then just as I reached the back of the truck, leapt high into the air.

For a moment I was flying, free as a bird! Then, with expert timing, I landed feet first onto the pile of ashes. ...And sank in!

As my feet sank, my shoes began to feel warm, then hot, then very hot, then unbearable!

I screamed, jumped as quickly and as far as I could. Tearing at my shoelaces as I fell to the ground. My mother ran to me, helped get the shoes and socks off, burning her fingers on the coals that had gone down the inside of my shoes. I rode home with my feet in a pan filled with water from the nearby Colorado River. And, the next few weeks were spent off my feet as much as possible!

Sometimes things aren't as innocuous as they may appear. I learned that at the Clifton Dump. But, I might not have learned that lesson had my parents not let me go to the dump with them and deal with it on my own terms. But dumps also teach us that one person's trash may be another's treasure. Look for this column in next month's newsletter to find out how!

God bless us all. —Rev. Les



A BOLD VENTURE
OUR SILVER JUBILEE CAPITAL CAMPAIGN
"How long will you wait before you begin...?" —Joshua 18:3

Bold Venture Silver Jubilee Capital Campaign Nears its Goal

Gracious God, as we embark on this bold venture in your name, assure us of your presence, enliven us with your passion, call us to the future you have prepared for us.

I am exciting about the future as we pursue this BOLD VENTURE! We continue our spiritual journey to fulfill our mission as a faith community to grow together toward full humanity through living the teachings of Jesus: Love, Acceptance, Justice and Hope. Paying down debt and making facilities improvements will enhance our ministry to both members and others whom God will send our way. It will be the first step in our congregation's challenging vision of the next twenty-five years of our life as a congregation.

When it came time for the people to move into the Promised Land to claim their inheritance, Joshua, the bold young leader of the Hebrew people, asked the question, "How long will you wait before you begin to take possession of the land that the Lord, the God of your ancestors, has given you?" (Joshua 18:3) We will wait only as long as it takes for congregational leaders to review the project proposals and bring the decision for your feedback. With \$1,751,414 from 233 commitments (as of May 27, 2007), our leaders are gathering information for us to make some informed choices about the critical path to our dreams.

The Finance Team is in conversation with Key Bank about the mortgage loan. The Building Committee is formally engaging an architect for the youth/adult education expansion. The process of planning with contractors and Douglas County could take from 4-6 months. We would hope to break ground in the spring and have occupancy by fall 2008. The Staff Parish Relations Team is reviewing staff compensations to make proposals to the leadership team. The Trustees will prioritize the needs for refurbishing the current facility.

St. Luke's stands on the threshold of a resounding achievement which will represent tremendous ministry growth and position the church for the future. It is evident that the Spirit is at work in our hearts as we reach out to one another and to our community and world. Our commitment to this capital campaign endeavor enables us to be even more effective. Prayerfully consider participating in this exciting effort.

Our mission at St. Luke's continues to inspire dynamic ministries, generous outreach, and transforming programs. We are blessed with growing ministries among youth and young adults, young families, and new retirees who are finding both their spiritual and physical homes in Highlands Ranch and surrounding cities. As a seven-day-a-week place, our facilities are alive with ministry throughout the days and evenings. This is a place of hospitality — a grace place for all. —Rev. Janet

Bold Venture Celebration Brunch May 13, 2007



SERVING ST. LUKE'S



Lynda Fickling
Director of
Servant Ministry

We are Called to Serve Invitation to Serve - June/July 2007

"In entering this journey of servanthood and becoming servants of Jesus, you will become deeply involved in spiritual community as you live and serve God-centered and others-focused ways." - Full Service by Siang-Yang Tan

Welcome Team: Seeking friendly, outgoing people to serve on a team whose mission is to welcome friends who have been visiting St. Luke's. We drop off a gift of information and a sincere welcome to St. Luke's to those who live in your area. If you can spare 5 minutes and no more than 2 times a month, contact Wally and begin serving on one of most valued teams. *Spiritual Gifts: Hospitality*
Contact: Wally Sackett 303-794-4303 wsackett@comcast.net

Communications: Do you enjoy writing? We are seeking folks to write articles for the church newsletter and to also be available to help others who need articles written! We would also love those on this team who enjoy graphic design and public relations work. Help spread the news of this wonderful church to the community! *Spiritual Gifts: Administration, Helps, Giving, Leadership, Hospitality, Evangelism*
Contact: Jim Ramsey 303-791-0659 x23 jim@stlukeshr.com

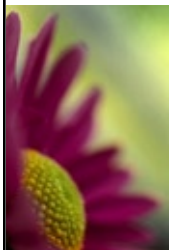
Coffee & Donut Team: The Fellowship Events Team is seeking folks to help clean up after the 11:00am service. If you are attending the 11:00am services, this is perfect for you! Responsibilities are cleaning the coffee/donut area, cleaning off the tables and the carpet (donuts are so good and crumbly!) *Spiritual Gifts: Helps*
Contact: Lynda Fickling 303-791-0659 x20 lynda@stlukeshr.com

Guest Service Station: It only takes a few minutes for anyone to feel welcome or not welcome to the church. Join one of our "first point of contact" teams, as the "Minister of Concierge". You are stationed in the foyer where you will meet and greet for 30 minutes one Sunday a month. *Spiritual Gifts: Helps, Hospitality*
Contact: Lynda Fickling 303-791-0659 x20 lynda@stlukeshr.com

*As we list the Spiritual Gifts, you may have one or more than one in each area. For further information regarding your Spiritual Gifts/Passions contact Lynda Fickling lynda@stlukeshr.com or 303-791-0659 x20.
Realize your potential for living a God-centered life!

Summertime Ministry Invitation

Have you been curious as to where you might serve at St. Luke's? Have you been so busy in the year that you haven't had the opportunity to slow down and really discover your gifts? Why not enlist in a one-time ministry try-out! Serve as an usher, greeter, coffee-maker, Sunday school leader for one Sunday as a guest. Then if you really enjoyed it and found that God has blessed you with that gift, wonderful! If you are still searching, why not try something else? Take advantage of the summertime season of growth and discovery with a new ministry at St. Luke's! Contact Lynda Fickling 303-791-0659 x20 lynda@stlukeshr.com



PRAYER CONCERNS



Week Ending June 1, 2007

To add or remove someone from the prayer chain,
contact Bonnie Funk 303-791-0659 x10 or Bonnie@stlukeshr.com

Gerry Wright (Gail Abernathy's mother)
Sturgis Wetherington
Janet Blatchford (friend of Samantha Leahy)
John Poole (friend of Joy Damsgard)
John Sudol (Joyce Carnes' cousin)
Beth Turner
Al Bierman (Sandi Thompson's friend's husband)
Walt Brewer
Jenni Keefer (Mike Hutchins' daughter)
Landon Orcutt (Linda Walker's cousin)
Avis Stanley (Joy Damsgard's mother)
Jim Hertel (Sandy Thompson's father)
Loyle Mason (Jim Ramsey's gr. uncle)
Brian Day (Eileen Law's nephew)
Carol Merrill (Sherry Merrill's mother)
Peter Quick
Jackie Lehnus (Lisa Lehnus' mother)
Yates Power (friend of Andrea Mezger's)
Courtney Nyberg (Kay Swanson's niece)
Norma Harris
Betty Kieser (Bonnie Funk's mother)
Kendall Griggs (Susan Hooke's uncle)
Ross Barnard's grandmother BuBu
Harold Johnson (Laurie Gilbert's father)
Owen Schoolar (family friend of Wendy Walberg/Henry/Marilyn Ott)
Brenda Schafer
Elizabeth Peterman (Paul Peterman's mother)
Fran West
Mary (Brenda Schafer's friend)
Fanelle Laughlin (Lisa Williams' aunt)
Becky Williams (Jeff Williams' sister)
Charles Hardin (family friend of Lisa Williams)
Burt Sahli (Diane Whetson's father)
Greg Lucero
Jerry Kirkpatrick (Kerry Lucero's father)
Ashley Dreyhouse (Carolyn Warden)

Erin Hornbarger (Patrick Griggs' sister)
Nancy Goodwin (family friend of the Griggs)
Guillermo Rodriguez, Sr. (Guillermo Rodriguez's father)
Brian Keefer (Mike Hutchins' son-in-law)
Becky Mossman (Kristin Mossman's grandmother)
Jake Smith
Sharon Liston (Cindy Raap's mother)
Janet Johnston
Kris Reif's son, David
Keith Fuicelli (Steve Filler's friend)
Randy Schmitz (friend of Kay Swanson)
Peggy Thorstad (friend of Nancy Abbott)
Bernie Mezger (John Mezger's father)
Carol Bryden (Kay Swanson's mother)
Eileen Law
Kay Gunkel (Amy Curtis' sister)
Patty Hertel (Sandy Thompson's sister)
Rev. Janet Forbes - broken foot 5-12-07
John Covey (friend of Ross Barnard)
Amber Cunningham (friend of Amy Antinoro)
Dennis Rhodes (brother of Pam Rowley)
Kathie Breneman (Lynda Fickling's sister Ellen Ursin's daughter)
George Hutchins (Mike Hutchins father)
Joyce Martin (friend of Kam Boles/Lise Takayama)
Ernie Wight (Elizabeth Laurvick's father)
Janet Walters
Debbie Smith

Sympathies:

To Sturgis & Susan Wetherington and daughter Laura Halpin on the passing of Laura's husband, Alex Halpin, May 26.

To Dean Conklin on the passing of his father, Henry Conklin, May 31.

UNITED METHODIST WOMEN

• Discover United Methodist Women through the mission and purpose

- » Monday, June 11 at 7:00pm
- » Women of all ages. Retired, working, young and teens.
- » Need child care? Reservations childcare@stlukeshr.com
- » Questions? Betty Ludlam 303-451-5141 or bludlam@wyoming.com

• UMW Breakfast at Annual Conference

- » Saturday, June 16, 6:30am \$17
- » Marriott Hotel (Tech Center)
- » Speaker: Rev. Rebekah Simon-Peter
- » Pass the Ham, and the Matzah, and the Tamales
- » One Woman's Spiritual Journey
- » Reservations required: 303-451-5141



WELCOME New Members: May 2007



Jeremy & Andra Brown (Alan)
"St. Luke's offers a warm & friendly family environment, one of which we look forward to growing with."



Andrew & Meredith Dannewitz (Jack)



Harvey & Bev Tripple
"Convenience - Enthusiasm & friendliness of the Church!"



Nelson & Lisa Garcia (Myria & Katarina)
"The fantastic programs especially for children and the community feel."

Confirmands:

Caroline Armijo
Jennifer Ballard
Michael Barlow
Danny Beutner
Jon Coryell
Kyle Curtis
Jordan Fickling
Bria Hutchinson
Kaitlyn Jensen
Katie Johnson
Tyler Kirchhoff

Annie Larsen
Jennifer Lukas
Holly Markel
Alyssa Markham
Ashley Martin
Olivia Murrow
Joshua Pawley
Presley Schwisow
Emily Seale
Madison Smith
Trevor Streaty
Douglas Tourtillott

Danielle Trotter
Colton Willoughby

Joining St. Luke's

Please contact
 Lynda Fickling
 303-791-0659 x20
 or lynda@stlukeshr.com or one of the pastors for more information.



Kevin Ashby
 Mountain Vista HS
 Arapahoe Community College



David Boon
 Arapahoe HS
 Metropolitan State College

Congratulations

2007 GRADUATES!



Kristina Carnes
 ThunderRidge HS
 University of Northern Colorado



Mark Carnes
 BS, Education
 University of Northern Colorado



Dylan Church
 Rock Canyon HS
 University of Colorado, Boulder



Melanie Colman
 Arapahoe HS
 University of Missouri, Columbia



Lauren Eagelston
 Highlands Ranch HS
 University of Denver



Perry Eliassen
 Mountain Vista HS
 Colorado State University



Kristine Fong
 Douglas County HS
 Harvey Mudd College, Claremont, CA



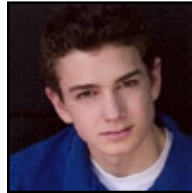
Mark Godsey
 Mountain Vista HS
 Texas A&M University



Kelsi Hertzler
 Highlands Ranch HS
 University of Colorado, Boulder



Wes Hottman
 Heritage HS
 University of Colorado, Boulder



Drew Kirchhoff
 Mountain Vista HS
 Miami University, Ohio



Jamie Korpai
 ThunderRidge HS
 Colorado State University



Kyle Latham
 Mountain Vista HS
 Colorado State University



Todd Latham
 Mountain Vista HS
 Colorado State University



Erin Laurvick
 BA, Communications
 University of Colorado, Boulder



Jessica Lukas
 Arapahoe HS
 Colorado State University



Amy McMullen
 Mountain Vista HS
 Colorado State Univ., Pueblo



Jensen Meier
 Mountain Vista HS
 Western State, Gunnison



Ben Mezger
 Mountain Vista HS
 Front Range Community College



Kristin Mossman
 Highlands Ranch HS
 Arizona State University



Mac Nelson
 Arapahoe HS
 Colorado State University



Kevin O'Neil
 Mountain Vista HS



John Ramsett
 BA, Psychology
 University of Colorado, Boulder



Matt Ransick
 Mountain Vista HS
 Fort Lewis College, Durango



AJ Schugel
 Mountain Vista HS
 University of New Mexico



Ryan Sims
 BS, Architectural Engineering, University of Colorado, Boulder



Mike Utter
 Mountain Vista HS
 Colorado State University



Kelsey Wesson
 Denver Christian HS
 University of North Texas



Tyler Whitmer
 Mountain Vista HS
 University of Colorado, Boulder



Sean Woodside
 ThunderRidge HS
 Metro State College

CHILDREN & FAMILY MINISTRIES



Jenita Rhodes
Director of Children's
Ministries



Lynne Butler
Assistant Children's
Ministries Director



Kristina Linn
Childcare
Director

MISSION MANIA is our summer Mission program for children in 5th and 6th grades and their friends will begin on June 8th. We meet at the church at 10:00am, drive to an area organization to learn about their program and help as we are able. Bring a sack lunch (with

something to share for those who forget) sunscreen and a water bottle. We will stop at a local park to eat lunch and play, then back to the church by 1:00pm. A current Permission Slip is required for all who attend. Because of the varied school schedules, DATES and SIGN-UP will be decided at the BBQ and then posted on our Kid's Page. You may then sign-up by emailing Jenita at jenita@stlukeshr.com. Adults will be needed to help drive and supervise. Please contact Jenita Rhodes with question or to volunteer.

JUNE 10: SUMMER SUNDAY SCHOOL BEGINS

The Incredible Race: Each Sunday the kids will go trackside where they will learn about Biblical pacesetters who turned in championship performances. Turbo-charged activities, high octane stories, performance ready puppets and pit stop snacks are just a few of the exciting times waiting for our racers each Sunday. Beginning June 10 through August 26.

There is no 11:00am Sunday School for Preschool or Elementary during the Summer

WACKY WEDNESDAYS

Our summer preschool is a success again this year. Enrollment has topped last year with over 13 classes being offered. The children will learn about the Parables of Jesus through stories, crafts, games, snacks and loads of fun! This program is for children ages 3 years by Sept 15, 2007 (and potty trained) through 3rd grade.

Registration has ended, but there may be a few still opened on certain dates: June 13 and 20, July 11, 18 or 25 – 9:30 to noon each day. Activity fee is \$15.00 per day. Contact Tami Clement at 303-791-1982 to check on which dates are available.

MARK YOUR CALENDAR! Saturday, August 18, is our Children's Ministry Sunday School Orientation

This is a very important session for all teachers, assistants, workshop leaders, and guides. We will begin at 9:00am and end by 11:00am. Our Mission is:

- To create an invitational atmosphere that will draw children and adults into a desire to learn about the Bible.
- To develop a program based on building a personal relationship with God and those around us.

- To provide an opportunity to grow spiritually by serving others as Jesus serves us.

Family Camp 2007

Make new friends and bond with old friends this year

at Family Camp 2007, Thursday, July 26 through Monday, July 30, 2007 at the Winding River Resort (www.windingriverresort.com) in Grand Lake, Colorado, right next to Rocky Mountain National Park. Everyone is welcome!

There is lots to do, such as horseback riding, an animal farm, awesome hiking and scenery, wading and fishing in the Colorado River, friends and fellowship. For the kids, a guided nature hike, crafts and lots of playtime are planned. Families usually gather in the evenings for pot luck dinners and campfire fun. On Sunday morning we hold an informal service outdoors in the splendor of God's creation.

Registration & Costs: Family Camp registration starts Sunday, May 20 and closes July 8. Registration is \$50 per family, which includes a \$25 deposit for campsite fees, and \$25 for supplies, food, and other common necessities. Sites range from \$28 to \$34 per night, per campsite, for two people. View/download the Registration Form, which contains detailed fee information, at www.stlukeshr.com/familycamp/.

Lay of the Land: A map of the campground which shows where Family Camp sites are located is shown at www.stlukeshr.com/familycamp/. There are tent-only camp sites with no water or electricity, and tent and RV sites which do have water and electricity. Modern bathing facilities are available to all. A very limited number of cabins and lodge rooms are available. These have running water with kitchens and full private baths. Please call Winding River at 303-623-1121 to check availability for cabins or lodge rooms.

Bathing Facilities: No worries here—modern bath houses with private showers, electricity, running water and flushing toilets are located within a very short walk from all sites.

Activities/Agenda: Family Camp is intended to be a relaxing, enjoyable experience for all. All activities are optional. Although there is a general agenda, please be assured that you may participate as little or as much as you'd like. If you prefer to snooze all day and join in at night for meals—that is perfectly fine! Group activities times and days TBD upon arrival. Planned group activities include horseback riding, crafts, a guided nature walk, a boating excursion and bike rides for adults and older children. Bike ride lengths will be determined based on skill levels of those who want to participate. There will probably be one for serious bikers and another more relaxed ride.

Contact Person: For more information, contact Amy Antinoro at 303-663-6656. Please also visit the Family Camp web page at www.stlukeshr.com/familycamp/.



Joining St. Luke's – A NEW Process:

We welcome you to our home and invite you to join our family. We are an inclusive community of faith, seeking to meet people where they are in their spiritual journey. We want to celebrate your life stories, your passion, and your gifts for making the world a grace place!

Every Sunday, we invite you to join by transfer of their membership or by profession of faith in Jesus Christ. We recognize the Sacrament of Baptism by all Christian churches. Any person who has received a Christian baptism need not be baptized again. Holy Baptism is a Covenant between an individual and God. If you have not been baptized and are ready to take this step, please contact Rev. Janet Forbes, Rev. Pam Rowley, or Lynda Fickling, our Director of Servant Ministry.

To join, simply fill out the membership card located in the "Friendship Pad." During the "Hymn of Grace," near the end of each Sunday worship service, persons are invited to come forward to be received and welcomed into the family of St. Luke's. Or you may simply hand the membership card to one of our Pastors at any time. Persons joining are asked to stay after the service to meet with our Director of Servant Ministry, to be welcomed, give and receive additional information, and have a picture taken. Although not required, we encourage you to attend our Orientation of St. Luke's held monthly, to explore St. Luke's programs, ministry, and missions. You will be invited to attend a New Member brunch. We will welcome you with food and fellowship and introduce you to our staff.

Questions?? Contact Lynda Fickling, Director of Servant Ministry
lynda@stlukeshr.com 303-791-0659 x20.

Get on the Greens with St. Luke's

St. Luke's 4th Annual Golf Tournament is quickly approaching and all members of the church, plus friends and family are invited to join in on the festivities. The invitational will be held at the award winning Jim

Engh-designed Fossil Trace Golf Club on Friday, August 24 and begins with lunch at noon and shot gun start at 1:30pm. Coinciding with the tournament is an opportunity for St. Luke's families and friends to spend the day at Splash



Aquatics Park, located near Fossil Trace, for a discounted entry fee. That evening everyone is invited to a dinner event, featuring a silent auction, at the Club at 6:30pm.

The invitational was started in an effort to raise money for the church bus fund and funds made from this year's event will again assist in paying for the loan payments and maintenance of the bus.

The St. Luke's Invitational Golf Committee is looking for volunteers to help with the event this year, for more information contact Dean Conklin at (720) 987-6745 or at dconklin@beef.org.

Yarn & Yak: The group will be on hiatus during the summer, restarting at the Ministry Fair in September. Catch you then!

Stephen Ministers – Here to Help

Almost two years ago the Stephen Ministry program was started to support our mission to be relational here at St. Luke's. You're probably become familiar with our Stephen Ministers through the bulletin board in Fellowship Hall. You may have noticed us serving communion or assisting with blessings at special services like Ash Wednesday.

What you may not be familiar with is the extent of our one-on-one ministry and how hurting individuals are identified and end up receiving care. So far in the program we've had over 50 people assigned to Stephen Ministers. The situations vary widely, from health issues, divorce, financial crises, problems with children of all ages, and grief of many forms to those who simply need a caring person to walk with them as they sort through issues of personal faith.

Our referrals often come from Pam, Janet, or other staff who become aware of a need. Our Stephen Ministers are also trained to recognize potential caring situations. Individuals may come to us directly or concerned family or friends may suggest this ministry. Those receiving care have been members and constituents of the congregation as well as members of the larger community. By reaching outside of St. Luke's this ministry is truly invitational and missional in addition to our goal of being relational.

No matter what the need or how it comes to our attention the referral and any resulting care are handled in the strictest confidence. If you find yourself needing someone to talk to, pray with, or confide in, I would encourage you to take advantage of this care that has been a benefit to so many others. Contact Rev. Pam Rowley at 303-791-0659 x 32 or Sue Townsend, our referral coordinator at 303-220-8830.

ST. LUKE'S ADULT CO-ED **SOFTBALL**

is gearing up for another fun-filled season beginning the first week in June. We sponsor two co-ed teams in a "church" league with all games being played on Sunday afternoons at Progress Park (located at approximately Broadway & Bellevue). The cost is \$10 per player. Please sign-up in the Fellowship Hall or feel free to contact Bill Dearasaugh at 303-814-3304 or bdearasa@aol.com with any questions.

ST. LUKE'S CYCLING CLUB: Haven't cycled much but want to get out? Maybe you're a cycling enthusiast? Or somewhere in between? Come join the St. Luke's cycling club. Upcoming ride: July 7. For questions or to sign up, contact Shawn Slade at denverslade@msn.com or Brion Antinoro at rkymtnrph@hotmail.com.



3rd Annual "KICKIN' IT FOR A CAUSE" **KICKBALL TOURNAMENT**

July 14, 2007 to benefit EASTER SEALS Colorado

Who? Any adult 18 years or older. Children are welcomed to be part of our Cheer Leading squad! St. Luke's would also like to bring a PEP BAND to help support our team or teams and of course the rest of the supporters.

Where? City of Cuernavaca Park (20th & Platte)

Cost per team member? \$50 PER PERSON - \$750.00 team minimum (15 players). You can have up to 25 players!

How to Register? Contact Jenita Rhodes at 303-791-0659 x27 or jenita@stlukeshr.com Registration will close July 1 (or when tournament fills)



Rev. Marla Kauertz
Consultant in Ministry
Development

Announcing a Wednesday Evening Summer Adult Class

You are invited to consider spending some time this summer making new friends, reading and discussing a timeless topic, and growing in your understanding and your faith. **Beginning Wed., June 20 downstairs in Matthew**

7:00-8:30pm for ten weeks, Rev. Marla Kauertz, will lead a study of Marcus Borg's newest book, Jesus: Uncovering the Life, Teachings, and Relevance of a Religious

Revolutionary. Borg begins his study by saying that, "We live in a 'Christ-haunted' and 'Christ-forgetting' culture... Jesus matters to a whole lot of people. Yet Christians in the United States are deeply divided about what it means to follow him."

Our intent will not be to necessarily come to any consensus, but to consider the work of an important scholar today and more important, to wrestle with what Jesus means in each of our lives and to deepen our understanding beyond the childhood Sunday School level many adults never question or outgrow.

Please sign up in advance so that we can order materials and also so that we will know if there is enough interest for the class to be held. There will be a clip-board on the Adult Ed table in the Narthex. Child-care will be provided if we know about it immediately. Please contact Kristina Linn x40 to request it.

Consider joining us for as many sessions as you can attend!

Disciple Bible Study, Fall, 2007

At some point, as those seeking to live as Christians, we should consider making the time commitment to truly study the Bible and come to know it better. The Disciple Bible Studies offer so much more than that. A small group of people commit, over an extended period of time (usually 32 to 36 weeks), to study together, but more important, to come to know and support one another and to encourage each other in the journey of faith.

All four levels of Disciple classes are being offered this Fall. Please begin with a Level 1 class, which is an overview of the entire Bible. After that, classes can be taken in any order. Rev. Les Ludlam will also be leading a shorter Disciple study of the Book of Genesis. Please stop in the Narthex and browse through the materials and the class-times and leaders. Co-leaders are still needed for several classes. There will be a small charge for study materials, but that can be paid when classes begin in the Fall.

Ed Heyse is the Disciple coordinator for the Adult Education Committee. Feel free to contact him with questions: heysefamily@msn.com

Notes from Missions: Missions of the Month for the summer: **June**—money, and food for InterFaith **July**—school supplies for children in need (backpacks, crayons, pencils, rulers, notebooks, etc.)

August—Mission Sunday: Welcome Dr. Phil Plunk, from Guatemala!

Drivers Needed: We are in need of a few more volunteers to pick up and deliver donated items to DenUM and Shannon's Hope. Volunteers would only need to drive 1 time a month. Contact Jan Rufien.

The Pastor's Book Club Will Meet this Summer!

Summer and a good book go together for many people. You are invited to consider reading two interesting books and then joining Rev. Marla Kauertz, the short-term Consultant for Ministry Development, to discuss them.

St. Luke's will be hearing a good deal about community this summer and its importance in our lives. We will read two books that deal with very different kinds of community—one with an animal and one with children in Pakistan.

In July, we will read and discuss a national best-seller entitled, The Good, Good Pig: The Extraordinary Life of Christopher Hogwood by Sy Montgomery. It is the true story of a sick little piglet adopted by the author who states that she had no idea that the pig would provide her with something that she had sought all her life: an anchor (eventually weighing 750 pounds) to family, home, and community. We will meet on Monday, July 23 at 7:00pm at the church. Everyone is welcome and copies of the book will be available in the Church Office. Young readers who might be interested are especially invited to join us.

In August we will read another best-seller, Three Cups of Tea: One Man's Mission to Promote Peace... One School at a Time, by Greg Mortenson and David Oliver Relin. Greg Mortenson is a mountaineer who ended up in an impoverished Pakistan village in 1993 after a failed attempt to climb K2. The village saved his life and, in return, he promised to return and build a school for their children. This is the account of his keeping his promise and eventually building fifty-five schools—especially for girls—in the forbidding terrain that gave birth to the Taliban. His story is a testament to the power of community across many barriers and boundaries. We will meet on Monday, August 27, at the church. Copies of the book will be available at the July meeting and in the Church Office after that date. Again, everyone is welcome!

Please sign up on the clip-boards in the Narthex if you are interested in attending so that we order adequate copies of the books. Child-care will be available if requested in advance—contact Kristina Linn x40. You are welcome to attend one or both of these gatherings. We look forward to learning about community together!

Update Database Information!!

Does our church database have YOUR family information correct? Here is your chance to update your records for our annual Guide Book & Directory. If you have not already informed the church about changes to your record, **please let Lynda know now** so that the information in the Guide Book & Directory is correct. Thanks!! Lynda@stlukeshr.com or x20



"Walk to Emmaus" spiritual renewal retreats are coming up Sept. 13-16 for men, Sept. 27-30 for women at the Id-Ra-Ha-Je camp near Bailey, Colorado. *Walk to Emmaus* is an ecumenical, international organization, sponsored by the Upper Room. Brochures and applications available in the church office. Space is limited, sign up early! Contact Pam Rowley, Jenita Rhodes, or Sherry Merrill for more information. Or go to www.columbineemmauscommunity.org

MUSIC & DRAMA MINISTRIES



James Ramsey
Director of
Worship & Arts



Carrie Mallery
Associate Dir. of
Worship & Arts



Kay Coryell
Associate Dir. of
Worship & Arts

The Music Man Show Dates: Oct. 25, 26, 27 & 28 *Save the date!!*

Summer Choir Retreat - June 16 8:30-11:30am in the Asbury Choir Room

All are invited! Sundays that Summer Choir Sings:

- June 17 - 8:30 practice for 9:30 service
- July 8 - 8:30 practice for 9:30 service
- August 5 - 8:30 practice for 9:30 service

Contact Jim if you want to join an ensemble or group in the fall. Go to www.stlukeshr.com for more information about each group.

Thank You from Dr. Ramsey:

To all who came to the All Ensembles Concert and reception, I want to express my sincerest thanks. It was such a blessing to see and talk to so many of you at the reception. I also want to say a special thanks for the incredible gifts; the ipod and the scholarship check for the Performing Arts Academy. I'm very much looking forward to using the iPod!

Many of you have asked about my degree, so I wanted to share the facts and figures so you know "the rest of the story." The title of my degree is Doctorate of Musical Arts in Choral Literature and Performance (D.M.A.). My major document research encompassed music in the 16th century with regard to clef transposition for music by composers in the Flemish, Franco-Flemish and Northern French Region. Its a performance document of nearly 300 pages that presents writings, theories, charts and editions surrounding the plausibility for transposition of 16th century choral music written in high or low clefs. The title of the document is *"Expanding the View of 16th Century Choral Literature: Transposition for Men's Chorus."* In short, the pitch of what we see printed on the page in a composers Collected Works edition (music that is put into modern notation and based off of manuscripts) is not necessarily how it was performed. Through extensive research, I suggest transposing various works that are within the scope of the project down or up a third, fourth or fifth which dramatically changes the timbre and color of the work for performance.

If you want to know more about this wonderful document, take me out for coffee and I'm happy to share! :-) Thanks again for all the support these last 8 years. Its truly a blessing to be in this community of faith we call St. Luke's! -Jim



OUR COMMUNITY OF FAITH

"Living Faith Seeking Justice"

— Conference Sponsored by the United Methodist General Board of Church and Society

If you are working to join justice and mercy as a member of the United Methodist Church, Living Faith, Seeking Justice is a time to nourish and equip you for that ministry. The conference, which will be held in Forth Worth, Texas, November 1-4, 2007, will include several ways for attendees to share their work and learn from what others are doing, including general session speakers, workshops, a "Cityscape" space that will highlight art that reflects justice, and site visits to several ministries that illustrate a commitment to justice in what they do and how they do it.

"Violence abounds from the Middle East to the campus of Virginia Tech," says General Secretary James Winkler. "How do congregations participate in helping to provide an alternative—a vision of a just and peaceful society—and then act together to carry out that vision? That's what this conference will give people a chance to do. Everyone will have an opportunity to hear, learn, and discuss solutions."

Conference workshops will be grouped into five categories: health and wholeness, gender justice, peace with justice, economic and environmental justice, and civil and human rights. Participants can expect the workshops to be experiential and interactive, giving them an opportunity not only to hear what the workshop leader has to say but also to share their own experiences and to hear from others.

If you are interested in attending as part of a group from St. Luke's UMC, or in submitting "just" artwork, please contact Susan McIntosh (303-347-0727, or susanmcintosh@yahoo.com)

(Information from a press release from the United Methodist General Board of Church and Society — <http://www.umc-gbcs.org/livingfaith>)



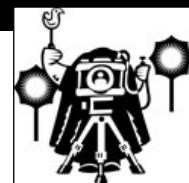
25th Anniversary Pictorial Directory

Be a part of St. Luke's 25th Anniversary Pictorial Directory! Our last complete pictorial directory was completed in 2003, with updates in 2004. For our silver jubilee edition, we'd like the highest participation rate ever! We're working with Bettinger Photography, which is locally owned. Photo shoot dates at St. Luke's are Sept. 16-23. However, you can have your portraits taken any time between June 3, 2007 and Jan. 5, 2008 at Bettinger Photography, 2431 S University Blvd.

Setting appointments will be easier than ever.

You can either: make an appointment after Sunday services starting August 6 or make your appointment online at www.bettingerphoto.com, click on "Church Directory Appointments."

All participating families will receive a free 8x10 portrait, plus the option of purchasing specially priced packages. Questions? Contact Jill Wright at 303-927-6345, or photodirectory@stlukeshr.com



DON'T MISS!

June 2007

- 6/11 – GEMS Hiking 10:00am
- 6/12 – STM ThrillSeekers
Rock Climbing 11:00am
- 6/12 – GEMS Swim Pirates' Cove 11am
- 6/12 – Subdistrict Sports Night 6-8:30
- 6/13 – GEMS Beading & Bible Study (B&B)
- STM Food & Ultimate Frisbee (F&F)
- 6/14 – Breakfast Club 10am ©Einstein's
- 6/17 – Jr. & Sr. High SLY AM 9:30am
- SLYtube 11:00am
- No SLY PM (Father's Day)
- 6/17-24 – **Sr. High Mission Trip**
to Camp Mechuwana, Maine
- 6/18 – GEMS Hiking 10:00am
- 6/21 – Breakfast Club 10am ©Einstein's
- GEMS Cave of the Winds
- 6/22 – On Call Friday
- 6/24 – Jr. & Sr. High SLY AM 9:30am
- SLYtube 11:00am
- SLY PM *Movie Night*. Movie TBD, meet at AMC 24 with \$\$
- 6/25 – GEMS Hiking 10:00am
- 6/26 – Sub-District Sports Night 6-8:30
- 6/27 – GEMS Mall Tag
- STM Ultimate Frisbee 6pm
- 6/29 – STM Rafting on Clear Creek

July 2007

- 7/1 – Jr. & Sr. High SLY AM 9:30am
- SLYtube 11:00am
- SLY PM *Renaissance Festival* noon-8pm. \$20 tickets at the door
- 7/5 – Breakfast Club 10am ©Einstein's
- 7/6 – On Call Friday
- 7/8 – Jr. & Sr. High SLY AM 9:30am
- SLYtube 11:00am
- SLY PM 6:30-8pm *First Annual Summer Games*
- 7/9 – GEMS Hiking 10:00am
- 7/10 – GEMS Day trip to Breckenridge
- Subdistrict Sports Night 6-8:30
- 7/11 – GEMS (B&B)
- STM (F&F)
- 7/12 – Breakfast Club 10am ©Einstein's
- 7/14-7/20 – **Jr. High Mission Trip** to Circle J Ranch, Ten Sleep, Wyoming
- 7/15 – Jr. & Sr. High SLY AM 9:30am
- SLYtube 11:00am
- SLY PM 6:30-8pm *Mini Golf \$5*
- 7/17 – Subdistrict Sports Night 6-8:30pm
- 7/19 – Breakfast Club 10am ©Einstein's
- 7/20 – On Call Friday
- 7/22 – Jr. & Sr. High SLY AM 9:30am
- SLYtube 11:00am
- SLY PM 7-10pm *Drive-In Movie*
- 7/23 – GEMS Hiking 10:00am
- 7/24 – GEMS Arts on Fire
- Subdistrict Sports Night 6-8:30pm
- 7/25 – GEMS (B&B)
- STM (F&F)
- 7/26 – Breakfast Club 10am ©Einstein's
- 7/29 – Jr. & Sr. High SLY AM 9:30am
- SLYtube 11:00am
- SLY PM 6:30-8pm *Rock Concert*
- 7/30 – GEMS Hiking 10:00am
- 7/31 – Subdistrict Sports Night 6-8:30



Chris Wilterdink
Director of
Youth Ministries



Susan Johnson
Assistant Director
of Youth Ministries

CHRIS's CORNER iSLY-Do U?

Genesis 41:11 *Each of us had a dream the same night, and each dream had a meaning of its own.*


Each dream does have a meaning of its own. My dream for this summer is for all of you; I dream are able to discover what makes you SLY... I know that might sound strange, but I think you'll get it when you know why I SLY!

I SLY to watch you learn more about yourselves. I SLY to introduce you to new friends and new ways of thinking about things. I SLY to keep myself a little crazy, I SLY because you make me laugh, and because you make me sure God is at work!

So this summer, experiment a little bit with the different programs we're trying out. We have something almost every day of the week. The more you try, the more dreams you'll find. By the end of the summer, will you be able to tell me what makes you SLY?

Peace & Love, Chris





GEMS (Girls' Enrichment Ministries)

All girls from new 7th graders through graduated 12th graders are invited to all GEMS activities. Weekly on Wednesday nights, the GEMS meet for Beading and Bible Study (B&B), and awesome way to create some meaningful jewelry. You can just show up for any B&B night!

You can also RSVP susan@stlukeshr.com for GEMS special events like a daytrip to Breckenridge, Spa Nights, and more!

STM (Shortcuts To Manhood)

A group for all guys from 7th to 12th grade. On Wednesday nights at 6 we meet for some Ultimate Frisbee and Pasa Pool afterwards. If you want to play, just show up at church by 6, we'll drive to the park for you!

We've also got some cool special events over the summer, like indoor rock climbing at ThrillSeekers, a whitewater rafting day on Clear Creek, and riding the Alpine Slide in Winter Park. You can RSVP to chris@stlukeshr.com for all of these events.

SLY AM (Sunday School)

9:30am—Incoming 7th graders to graduated 8th graders in the Jr. High room. Graduated 9th graders and up in the Sr. High room. Weekly topical discussions and lively debates!

11am—SLYTUBE 7th-12th graders are invited to this new class to write, produce, film, and post videos with positive and post videos with positive messages to YouTube. Come ready to express yourself!

SLY PM (UMYF)

6:30-8pm Sunday Nights Fellowship and Fun all summer long! Check the calendar for different activities and costs.

BREAKFAST CLUB THURSDAYS 10AM

MEET US AT EINSTEIN'S BAKERY (BROADWAY & HR PKWY) AT 10AM FOR A WEEKLY DEVOTION. A GREAT WAY TO START YOUR DAY!

SUB DISTRICT SPORTS TUESDAYS 6-8:30PM

COME AND PLAY SOME SPORT WITH OTHER YOUTH GROUPS FROM AROUND THE DENVER METRO AREA. VOLLEYBALL? FRISBEE? SOCCER? COME AND PLAY YOUR FAVORITE

ON-CALL - O-GISTS

Every other Friday you can show up at St. Luke's and go work on a local mission project. Also, you can sign up with Steve Treat (303-797-7908) to get on an On Call List and help out members of our congregation who need an extra hand on short notice. If you have the time and energy, we'd love you to be on call help over the summer.

THIRTY HOUR FAMINE

LOCK IN August 10 & 11
SIGN UP TO STARVE AND RAISE MONEY FOR WORLD VISION

- ✦ **STM Event Calendars now available at SLY info stations.** Sign up for rock climbing on 6/12, rafting 6/29, alpine slide 7/25. All guys welcome for Ultimate Frisbee and Food Wednesday nights starting 6/13.

- ✦ **GEMS Event Calendars now available at SLY info stations.** Sign up for Pirates' Cove on 6/12, Beading & Bible Study, Hikes, Spa-Nights, & more

- ✦ **Summer Breakfast Club** meets at 10am at Einstein's on HR Pkwy & Broadway. Meet us there!
- ✦ **On Call Fridays** Make sure to participate in local missions this summer. You don't have to go far to find people in need! Every other Friday all summer long.
- ✦ **Thirty Hour Famine** sign ups will be available in July Sign up to help us out

FINANCIAL UPDATE



Dave Cupp
Director of Finance



Janet Maxwell
Assistant Director
of Finance

Our Financial Performance Numbers Still Need a Little Help

Our financial performance through April reflected a pretty good start for 2007. However, as I reported last month, we got about \$10,000 behind in our receipts during the first three months and that is about how

much we liked covering our expenses through April. We did finish April by exceeding the \$101,357 projected contributions by \$1,093. **That is good news.**

The projected contributions for May are \$73,748. Through May 22 and with the remaining EFTs we're at about \$59,000 with one holiday weekend Sunday to go. We'll have to push to make the projection. However, it looked about the same at this time last month and you came through and exceeded the projection. Hopefully, that will happen again. If you're not current, please try to catch up so we can meet the target.

How Big Are The Bills? I'm paying bills today as I do every Wednesday. Today I will be writing about 20 checks. The most notable in the group are checks to Xcel Energy for our monthly gas and electric in the amount of \$2,475.02 and the staff health insurance monthly check for four employees in the amount of \$5,000.197. One-half of the insurance bill comes from our budget and the other half is paid by the employees. June is the annual enrollment for the insurance and the average premium increase for next year is 14+%. Earlier this week I passed out bi-weekly payroll checks with a gross budget impact of about \$18,500.

We have these items in our budget and the bills are not surprises. However, I thought sharing these items with you would give you a little insight into how much it really takes to operate a church of our size. The fun part of my job is keeping us on track by doing the best job possible of forecasting how much income we will receive each month and anticipating our expenses—budgeting.



Visa, MasterCard, Discover and American Express Cards Accepted Here. We've expanded the Electric Funds Transfer (EFT) program to online transactions at our website and to include credit cards. Whether you use the online feature or the normal enrollment form, you can make your contributions to the general fund and the Bold Venture Capital Campaign Fund with deductions from checking, savings and/or credit cards. You can go online to stlukeshr.com where you can click the button to "make contributions online" or you can fill out one of the enrollment forms found in the Narthex that now includes the credit card option.

The online feature allows you to do one time or repeating transactions with weekly or monthly frequencies. The one time limit online is \$6000. However, if you need a higher limit, contact me and I can get that changed on an individual basis.

Grocery cards are not a part of the online and credit card features. It is anticipated that certain special events will use the online feature and credit card options for sign-up and payment. You will be informed of this and given instructions as participating events are announced.

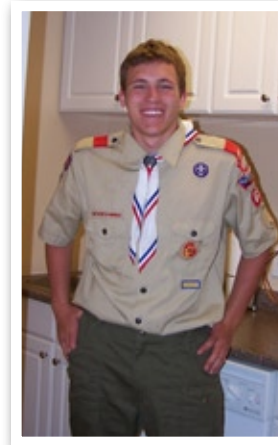
Make Sure Your Checks Are Marked For Your Capital Campaign Contributions. Now that we are receiving checks for the Bold Venture Capital Campaign, it is extremely important that

you mark your check for its intended use if it is not for the general fund. Some are electing to write one combined check for general fund and Bold Venture. That works well except you need to identify how much goes to the Bold Venture. All you need to do is use "CC" or "BV" for any check amount that goes to Bold Venture. If they are not marked otherwise on the memo line we assume they were intended for the general fund income. Please be sure and check your quarterly statements to make sure we've applied your funds per your intent and let me know if we need to make changes.

Help! If your child received one of the numbered envelopes in Sunday School during the Hearts For Ministry Campaign, please let me know the number on the envelope and the full name that goes with the number. We're working hard to make sure we give credit for each of the contributions and will send the children their individual giving statements just like their parents receive. Our problem arises from the fact that many of them only put their first names on the envelopes and we have no record of who the envelopes were given to. Also, sometimes the name on the envelope is not very legible—this is not necessarily an age thing. If we can relate the names and numbers one time then we can post them by referring to the number even if their full name is not on the envelope. Email the information to me at davec@stlukeshr.com or call me at 303.791.0659 x24.

TRUSTEES CORNER

We'd like to honor and thank all of the volunteers who turned out for our best spring work day ever! Our Disciple classes, Scouts and Trustees along with several other volunteers painted, cleaned, weeded, trimmed, inside and out to give our St. Luke's home a much needed lift. You made such a difference and we **Thank You!**



Eagle Scout Project Update

Last fall the Trustees identified a project need to improve our service supporting our community outreach while improving maintenance and safety concerns for St. Luke's. An Eagle Scout Candidate accepted the project, and in May Chris Pfarr has completed his Eagle Scout award by managing the completion of a mini-kitchen addition to our John classroom in the lower level. Groups meeting here primarily serve our outreach programs that meet daily supporting St. Luke's members, constituents, individuals and families from the south metro community struggling to overcome dependencies on alcohol and drugs or with other emotional and mental health challenges. Congratulations and thanks to Chris, his family, friends, Scout Troop 633, and to Sandi Miyaki, trustee, for serving as his mentor and liaison to the church throughout the project.

Nametags - New and improved!

Those beautiful silver/black magnetic nametags are available for you to purchase at the "Get Connected" table in the narthex. Just order for \$3.50 on Sunday or contact lynda@stlukeshr.com. They will be ready for you to pick up the following week!



The CHRONICLE

St. Luke's United Methodist Church

8817 S. Broadway • Highlands Ranch, CO 80129

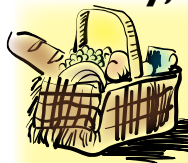
303-791-0659 • www.stlukeshr.com

NON-PROFIT
ORG
**U S POSTAGE
PAID**
PERMIT #7
LITTLETON, CO

*St. Luke's United Methodist Church welcomes you to our Christian family,
where we share life. Wherever you are in your faith journey,
you are accepted and encouraged to grow spiritually.*

*Join us in growing together toward full humanity through living
the teachings of Jesus: Love, Acceptance, Justice and Hope.*

St. Luke's Annual Church Picnic Sunday, August 5 • noon-2pm



Bring your picnic blanket for a special
Sunday with your St. Luke's family. Hot
dogs and hamburgers, old fashioned
games, and water balloons!

Please bring the following items to share:

Last Name begins with...

* A~L Side Dish (salads, chips, etc.)

* M~Z Dessert

If you have questions or would like to help grill(!), food setup,
setting up tables and taking down tables, please contact our
Fellowship Events Team Leaders, Lisa Lehnus 303-346-8114
lehnusl@yahoo.com or Mona Daniels moandtroy@msn.com

women's breakfasts – join us!

July 7 – 9:00am *Cafe deFrance* on University

August 4 – 9:00am *Mimi's* on Yosemite

JUNE / JULY 2007 CALENDAR

Sunday	Monday	Tuesday	Wednesday	Thursday	Friday	Saturday
JUNE 17 FATHER'S DAY 8, 9:30, 11am: Worship 9:30am: Orientation to St. Luke's SR. HIGH MISSION	18 10am: GEMS Hiking Performing Arts Academy SR. HIGH MISSION	19 6pm: Sub District Sports Night 7pm: Scrapbook Circle Performing Arts Academy SR. HIGH MISSION	20 6pm: GEMS Bead & Bible STM Food & Frisbee Performing Arts Academy SR. HIGH MISSION	21 10am: Breakfast Club GEMS Cave of the Winds Performing Arts Academy SR. HIGH MISSION	22 ON CALL Friday Performing Arts Academy SR. HIGH MISSION	23 SR. HIGH MISSION
24 8, 9:30, 11am: Worship 9:30am: Orientation to St. Luke's 6:30pm: SLY PM SR. HIGH MISSION	25 9am-noon: VBS 10am: GEMS Hiking	26 9am-noon: VBS 6:30pm: Live, Laugh & Love Club	27 9am-noon: VBS GEMS Mail Tag 6pm: GEMS Bead & Bible STM Food & Frisbee	28 9am-noon: VBS 10am: Breakfast Club 6pm: JR. HIGH MISSION Mtg.	29 9am-noon: VBS 9am: STM Clear Creek Rafting	30
JULY 1 VBS Performance 8, 9:30, 11am: Worship noon: SLY PM	2	3	4 INDEPENDENCE DAY	5 10am: Breakfast Club	6 ON CALL Friday	7 Large Church Immersion Experience
8 8, 9:30, 11am: Worship 6:30pm: SLY PM Large Church Immersion Experience	9 10am: GEMS Hiking Large Church Immersion Experience	10 GEMS Day Trip to Breckenridge 6pm: Sub District Sports Night 7pm: Adult Ed Team	11 6pm: GEMS Bead & Bible STM Food & Frisbee	12 10am: Breakfast Club	13	14 JR. HIGH MISSION
15 8, 9:30, 11am: Worship 9:30am: Orientation to St. Luke's 6:30pm: SLY PM JR. HIGH MISSION	16 JR. HIGH MISSION	17 6pm: Sub District Sports Night 7pm: Scrapbook Circle JR. HIGH MISSION	18 6pm: GEMS Bead & Bible STM Food & Frisbee JR. HIGH MISSION	19 10am: Breakfast Club JR. HIGH MISSION	20 ON CALL Friday JR. HIGH MISSION	21
22 8, 9:30, 11am: Worship 9:30am: Orientation to St. Luke's 6:30pm: SLY PM	23 10am: GEMS Hiking	24 GEMS Arts on Fire 6pm: Sub District Sports Night	25 6pm: GEMS Bead & Bible STM Food & Frisbee	26 10am: Breakfast Club FAMILY CAMP	27 FAMILY CAMP	28 FAMILY CAMP