



Highlands Ranch, Colorado

# The CHRONICLE

March 2007

ST. LUKE'S UNITED METHODIST CHURCH

## Inside This Issue:

**More from Les.....3**  
**Called to Serve.....4**  
**Servant Spotlight.....5**  
**Children's Ministry.....6-7**  
**Adult Education.....8-9**  
**SLY.....10**  
**Financial Update.....11**  
*and much more!*



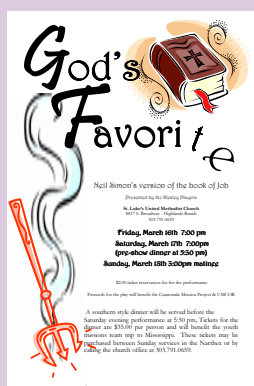
John Wesley School in Santa Cruz del Quiche

## Thanks for Mission Donations!

by Betsy Keyack

Thanks to generous donations totaling over \$40,000, St. Luke's was able to give support to many missions, near and far, in 2006. These donations were generated from the Music/Drama programs, the Missions of the Month, special offerings and special projects. Appreciation beyond words goes to all who were involved in the Music and Drama ministries! Thanks to all of you who have given to missions financially and with in-kind donations!

*continued on page 9*



## Don't miss God's Favorite

**March 16, 17 at 7:00pm  
& March 18 at 3:00pm**  
 The story of the book of Job is modernized into a comedy by Neil Simon and proves to be a wonderful and entertaining evening for nearly any age. Make plans now to see this great story of the bible set in New York. You won't want to miss this great performance by our very own Wesley Players. The performance is free, however, donations will be accepted to benefit the St. Luke's Missions program. A pre-show southern dinner will be served on Saturday at 5:30pm. Tickets for the dinner are \$35 and benefit the Youth Missions Team trip to Mississippi.

## THE ROAD WHERE FAITH IS FOUND

*The Season of Lent at St. Luke's*

### WEDNESDAY LENTEN CLASSES

Feb. 21, 28, March 7, 14, 21, 28, April 4

#### EVENINGS at 6:30pm

"Following at a Distance" —Rev. Les Ludlam

#### MORNINGS at 6:30am at the Egg & I

(Highlands Ranch Pkwy between Broadway & Lucent)

"From Nomads to Pilgrims" based on The Last Week by Marcus Borg and John Dominic Crossan

—Rev. Janet Forbes

### WEDNESDAY LENTEN DINNERS

Feb. 21, 28, March 7, 14, 21, 28, April 4

— Soup & Salad Supper 5:45-6:15pm

### DINNER DANCE

SATURDAY March 10 — 6:00pm

### 3rd SUNDAY OF LENT

SUNDAY March 11 — 8:00, 9:30 & 11:00am

"The Questions Job Asks" —Rev. Janet Forbes

### "GOD'S FAVORITE"

THURSDAY March 15 —

Open Dress Rehearsal 7:00pm

FRIDAY March 16 — Show 7:00pm

SATURDAY March 17 —

Dinner 5:30pm, Show 7:00pm

SUNDAY March 18 — Show 3:00pm

Drama Ministry presents Neil Simon's comedy based on the story of the book of Job.

### 4th SUNDAY OF LENT

SUNDAY March 18 — 8:00, 9:30 & 11:00am

"Partners and Pilgrims" —Rev. Janet Forbes

featuring music by the 80-voice Kansas Wesleyan Choir and our own Chancel Choir

### 5th SUNDAY OF LENT

SUNDAY March 25 — 8:00, 9:30 & 11:00am

"A Bold Venture" —Rev. Janet Forbes

### EASTER FUN DAY

SATURDAY March 31 — 10:00am-noon

Join the fun! Easter egg hunts, carnival games and, of course, the Easter Bunny!

### PALM SUNDAY SERVICES

SUNDAY April 1 — 8:00, 9:30 and 11:00am

"A Tale of Two Processionals" —Rev. Janet Forbes

featuring Children's Choir, Chancel Choir, Brass Ensemble

### OPERA COLORADO CONCERT

SUNDAY April 1 — 6:30pm

Opera Colorado presents *La Curandera* (The Healer) in the church sanctuary. Everyone invited! Benefits missions.

### MAUNDY THURSDAY SERVICE

THURSDAY April 5 — 7:00pm

A contemplative communion service that will reflect on the journey of Jesus in his last week, fulfilling his purpose for coming to us and becoming our ultimate model of "the road where faith is found."

### GOOD FRIDAY SERVICE

FRIDAY April 6 — 7:00pm

A Tenebrae Service of Darkness featuring the Chancel Choir and readings that reflect upon the last words of Jesus and his final act of compassion.

## EASTER SERVICES

SUNDAY April 8

6:00am — Sunrise Service

Joint youth-run Sunrise Service with St. Andrew UMC, at Highlands Ranch Redstone Park.

8:00, 9:00, 10:00 & 11:00am

"The Places Where Paths Cross" —Rev. Janet Forbes

8:00am featuring the Sunrise Band

9:00, 10:00 & 11:00am featuring music by the Chancel Choir, Handbells, Brass and Organ

**Sunday Worship Services:**  
8:00am, 9:30am & 11:00am**Sunday School:**  
(Adult, Youth & Children)  
9:30am & 11:00am

Nursery available for all services

**Church Office: 303-791-0659**

Fax: 303-470-5615

St. Luke's Youth.....x45

Childcare Reservations.....x47

Email: office@stlukeshr.com

Website: www.stlukeshr.com

**Staff:****Rev. Janet Forbes.....x13**

Senior Minister

Emergency: 303-241-9312

**Rev. Pam Rowley.....x32**

Associate Minister

Emergency: 720-348-1528

**Rev. Dave Money.....x33**

Associate Minister

Emergency: 303-932-1035

**James Ramsey.....x23**

Director of Worship &amp; Arts

**Carrie Mallory.....x35**

Associate Director of Worship &amp; Arts

**Kay Coryell.....x43**

Associate Director of Worship &amp; Arts

**Chris Wilterdink.....x14**

Director of Youth Ministries

**Susan Johnson.....x19**

Assistant Director of Youth Ministries

**Jenita Rhodes.....x27**

Director of Children's Ministry

**Lynne Butler.....x11**

Assistant Children's Ministry Director

**Kristina Linn.....x40**

Childcare Director

**Lynda Fickling.....x20**

Director of Servant Ministry

**Bonnie Funk.....x10**

Church Secretary

**Dave Cupp.....x24**

Director of Finance

**Janet Maxwell.....x16**

Assistant Director of Finance

**Barry Curtis.....x39**

Facilities Manager

**Kay Swanson...303-791-1982**

Director of Little School

All articles, photos and  
announcements for the  
April issue of  
*The Chronicle* are due  
March 15th.

Editor: Sharon Oliver  
chronicle@stlukeshr.com

**Rev. Janet Forbes**  
Senior Pastor**THE ROAD  
WHERE FAITH  
IS FOUND: From  
Nomads to Pilgrims***The Season of Lent at St. Luke's*

On Friday afternoon, February 16, several of us from St. Luke's visited St. Paul's Chapel, one of the oldest churches in the United States and the church that sits right on the edge of the site of the World Trade Center. Since September 2001, this congregation has seen more than two million visitors a year.

While watching the people interact with the moving displays from the days following 9/11, Rev. Anne, the vicar of this Episcopal congregation, talked with me about spiritual tourists - the throngs of people who journey to the church seeking to understand the terrorist attacks. These unmoored nomads live in a fractured world trying to make spiritual and theological sense of the changes, violence, suffering, and war that have engulfed us.

Rev. Anne reflected, "We've got tourists galore. They come. They come in droves. But I don't want them to leave as tourists. I want them to become pilgrims. I want them to connect, to know that there is something more."

Although not many other churches have two million tourists a year, St. Paul's is not necessarily unique. In effect, the vicar's words speak of all religious communities. Every church, synagogue, mosque, and temple in the United States sits among a throng of tourists - people on a journey of self-discovery.

But simply being on a spiritual journey does not automatically mean that people will find meaning. Rather, as Anne suggested, they need to connect and discover that journeys can become pilgrimages. Tourists can become pilgrims.

Trips and journeys are wonderful things. Most recently, Bob and I enjoyed cross-country skiing at the Snow Mountain Ranch near Winter Park. We sought a change of activity that gives new perspectives on normal life, rest and play that strengthens us for things back home. Being a tourist takes us outside of daily life, and when Bob and I push across a snow covered mountain meadow, we are experiencing the high country in an entirely different way than do the year-round locals.

But what if, instead of a week-long vacation, we moved in? Becoming a pilgrim means becoming a local who adopts a new place and new identity. Unlike the tourist, a pilgrim's goal is not to escape life, but to embrace it more deeply, to be wholly transformed with new ways of being in community and new hopes for the world. Being a tourist means experiencing something new; being a pilgrim means becoming

someone new.

This notion of pilgrimage is at the heart of our Lenten conversations on the Road Where Faith is Found. Our faith journeys may be solitary, but no faith journey is solo. We are each becoming who we are, not just by the grace of God, but in the company of those who are on the road with us, through the wisdom of those who pointed out the way when we were lost, and by the mercy of those who helped us to our feet when we stumbled. During Lent, we will explore life as intersections where pilgrims companion each other in the journey: church, marriage, partners, family, vocation, friendship.

The Christian faith understands relationships with others to be of inestimable importance for at least three reasons. First, this is simply how we are made. We are built for relationship. We not only thrive but we become fully human only in relationship with others. Second, Jesus lived his life for others. He lived in community and he loved others so deeply as to lay down his life for them. Third, and here we tread the precincts of mystery - the God we understand in Trinitarian theology is understood not in terms of radical autonomy but in terms of relationship. If the deepest truth about God is that God is relationship, love, and communion, the implications for those who would be in relationship with such a God are stunning. To believe in such a God means that everything "of God" is that which nourishes, deepens, and sustains relationships of love, trust, communion, and intimacy. Likewise, everything that severs, demeans, trivializes, and hampers such relationship is incongruous with the very nature of God. Such things are not just disobedience of God's will, they are in disharmony with the very being of God. We who name a Trinitarian God are called to live in relationships of deep communion that is nothing less than an earthly reflection of the life of God.

May God bless you and  
your companions on  
the way!



Jenna Nolder gets a cross of ashes marked on her forehead during "A Service of Fire & Ashes" on Ash Wednesday, Feb. 21.



## More from Les: Giving to Fulfill a Mission

by Rev. Les Ludlam, St. Luke's Lay/Associate Pastor 1993-1997

Church growth guru, Herb Miller, reminds us that we extend our personalities in several ways: how we spend our time, the people we associate with, how we raise our kids.

But one of the most powerful means by which we express who we are is through the ways we use money. Major credit card companies and retailers have known this for a long time. Through money we choose the kind of car we drive, the place we live, what we do for recreation.

Money is an expression of our priorities in living.

Neither the Bible nor Jesus disapproves of money or wealth. Money in itself is not viewed as evil. By itself, money is an amoral force like electricity, which can light a church or can power an illicit laboratory for drug manufacturing.

Our use of our money is another matter, we can do great good, or we can be wasteful. We can be humanitarian or we can be selfish. The choice is ours.

Our giving to the church is a powerful expression of our faith and a part of our ministry to those around us. It allows us to reach beyond ourselves to help make lives better for others, it makes us partners with God.

Since churches are led by human beings, they can succumb to the temptation to focus on getting money to run the budget rather than focusing on the full meaning of stewardship and the integral part of giving to support the kingdom of God plays in our lives as Christians.

Our Capital Campaign is in the final planning phases right now.

As we participate by pledging to this campaign, we will be focusing on what it takes to prepare ourselves, and our facility, for the future.

To fulfill our vision of being Invitational, Relational and Missional for those we may encounter and serve in the future, we must make commitments now. By doing so we will keep this vision alive and meaningful.

May we express our faith and confidence in the future by participating in this campaign. Our commitment to the Capital Campaign is not merely commitment to a specific dollar amount, but a commitment to growing this church's capability to reach out in ministry and teaching and service.

God bless this church, God bless us all! —Rev. Les



Senior Girl Scout Troop #652 and Junior Troop # 2732 donated dozens of boxes of Girl Scout cookies to St. Luke's Mission of the Month, "Support Our Troops." The cookies, along with other donated items will be a great treat for our servicemen and women serving in Iraq. Senior Scouts pictured are Jill Radtke, Tricia McCarthy, and Junior Scouts, Garrett Ann Nevin and Nikki Markham.

**Scrapbook Circle starting up again!** We are meeting the 3rd Tuesday of the month at 7:00pm in Fellowship Hall. We are also going to meet on Sat., May 5th for an all-day *Crop for the Cure* 9:00am-5:00pm.



**Save the Date for the 3rd Annual St. Luke's Invitational Golf Tournament:** Friday, August 24th, lunch then 1:30pm start at Fossil Trace Golf Club. New Volunteers on the St. Luke's Golf Committee are needed. Please contact Dean Conklin at [dconklin@beef.org](mailto:dconklin@beef.org) or 720-987-6745.

## The PURPOSE of United Methodist Women:

The organized unit of United Methodist Women shall be a community of women whose PURPOSE is to know God and to experience freedom as whole persons through Jesus Christ; to develop a creative, supportive fellowship; and to expand concepts of mission through participation in the global ministries of the church.



### UPCOMING EVENTS:

- **April 27-29 Rocky Mountain Conference UMW Spiritual Retreat**, Estes Park (*Registration date is March 19*)  
Get information and registration on website [www.rmcmw.org](http://www.rmcmw.org)
- **August 9-12 Rocky Mountain Conference Cooperative** (UMW and the General Church) School of Christian Mission.  
Studies: Music and Mission, Israel and Palestine, Globalization: Its Impact in Our Lives

If you have questions about UMW go to the Conference website [rmcmw.org](http://rmcmw.org) or Women's Division website [umwmission.org](http://umwmission.org) or contact District President, Ruth Wills at [ruthmwills@aol.com](mailto:ruthmwills@aol.com) or Betty Ludlam at [bludlam@wyoming.com](mailto:bludlam@wyoming.com)

### GET TO KNOW ST. LUKE'S

## NEW! Orientation of St. Luke's

Come Explore St. Luke's on the second and fourth Sunday in the Fellowship Hall at 9:30am. Grab a cup of coffee, a donut and meet some new friends to explore all that St. Luke's has for your spiritual journey. During this 45 minute orientation, we will discuss the ministry programs, fellowship opportunities, and the mission and vision of our church. Along with the information, we will answer any questions you may have. ??Contact Lynda Fickling our Director of Servant Ministry 303-791-0659 x20 or email [lynda@stlukeshr.com](mailto:lynda@stlukeshr.com).



**Lynda Fickling**  
Director of  
Servant Ministry

## We are Called to Serve Serving Opportunities March 2007

*"The Fourth Principle of Biblical Servanthood: As we open our hearts to God's purposes, we become available to move to the places God wants us to be.*

*("Lifekeys" Servant by Design Class, offered here at St. Luke's)*

### Join one of our Ministry Teams

**Fellowship Events Team:** Help plan, cook, serve, set/up, clean/up for Special Events at St. Luke's. We have many events beginning with "Fat Tuesday" and running through May! We could use many extra hands! Spiritual Gifts: Helps, Hospitality, Administration

**Contact:** *Lisa Lehnus 303-346-8114 lehnusl@yahoo.com*

**Get Connected Ministry Team:** Our Newest Team! Help for 30 minutes one Sunday a month at the "Get Connected" table in the Narthex. Our focus is to get everyone connected in his or her ministry of interest. You do NOT have to have the answer for everything, just the welcoming invitation to help others! Spiritual Gifts: Helps, Hospitality, Administration, Leadership

**Contact:** *Lynda Fickling 303-791-0659 x20 lynda@stlukeshr.com*

**Welcome Team:** Seeking friendly, outgoing people to serve on a team whose mission is to welcome friends who have been visiting St. Luke's. We drop off a gift of information and a sincere welcome to St. Luke's. If you can spare 5 minutes and no more than 2 times a month, contact Wally and begin serving on one of most valued teams. Spiritual Gifts: Hospitality

**Contact:** *Wally Sackett 303-794-4303 wsackett@comcast.net*

**Guest Service Station:** It only takes a few minutes for anyone to feel welcome or not welcome to the church. Join one of our "first point of contact" teams, as the "Minister of Concierge". You are stationed in the foyer where you will meet and greet for 30 minutes one Sunday a month. Spiritual Gifts: Helps, Hospitality

**Contact:** *Lynda Fickling 303-791-0659 x20 lynda@stlukeshr.com*

**Ushers:** Assists in the Sunday service by ensuring worshippers are attended to before, during and after the service. Ushers typically serve on a quarterly basis at the service time of their choice. Join this very important "point of contact" team to make guests and members feel at home. Spiritual Gifts: Hospitality, Helps

**Contact:** *Shawn Slade 303-660-6113 denveslade@msn.com or Dick Frame 303-91-4251 rfream5492@aol.com*

\*As we list the Spiritual Gifts, you may have one or more than one in each area. For further information regarding your Spiritual Gifts/Passions contact Lynda Fickling at lynda@stlukeshr.com or 303-791-0659 x20. Realize your potential for living a God-centered life!

### E-Mail Connections: Make sure we have

your email so that you can stay "in the loop." Email lynda@stlukeshr.com with your email address or include it with your name in the Friendship Pad!



### Week Ending February 16, 2007

Gerry Wright (Gail Abernathy's mother)

Carolyn Dean

Nancy Rawls (Betsy Keyack's sister)

Dorothy Lloyd (Sheri Shea's mother)

Lisa Maciejewski (Jennifer Jiang's sister)

Wendy Walker (friend of Sheri Shea)

Sturgis Wetherington

Jerry Heinz (Rachel Nolder's father-in-law)

Bill Lee, Jr.

Grant Larson

Richard VanderKooy (brother-in-law of Rick and Robin Fort)

Janet Blatchford (friend of Samantha Leahy)

Louis Pressel (Carolyn Warden's cousin)

John Poole (friend of Joy Damsgard)

John Sudol (Joyce Carnes' cousin)

Jessie Meyer (friend of Gail Abernathy's)

Dick DeWire (friend of Pat Ludwig)

Joey Miyaki

Kim Friel (friend of Lynda Fickling)

Beth Turner

Al Bierman (Sandi Thompson's friend's husband)

Walt Brewer

Julia Muse (Karin Weispfenning's friend)

Jenni Keefer (Mike Hutchins' daughter)

Landon Orcutt & family (Linda Walker)

Joseph Streaty (Jon Streaty's brother)

Eric Edelen (Lisé Takayama's nephew)

Bob Streaty (Jon's brother)

Norm Keller (Candy Keller's father)

Maureen Genger (Sharon Scholle's friend)

Avis Stanley (Joy Damsgard's mother)

Jim Hertel (Sandi Thompson's father)

Kathryn Bauer (Elaine Carlstrom's mother)

Loyle Mason (Jim Ramsey's gr. uncle)

Tammy McLeod (Betty & Amiel Smith's friend)

Brian Day (Eileen Law's nephew)

Janice Van Hoosen (Jay Van Hoosen's mother)

Karen Esue (Pam Taylor's cousin's sister-in-law)

Betsy Riner (Susan Stanley's friend)

Peggy Dunnigan (Kristina Linn's grandmother)

Wilma Ashbaugh (friend of Marilyn Ayers)

Brent Webber (friend of the Harry Cushing family)

Paul Dunlap

Cheryl Grey (Lisé Takayama's former sister-in-law)

Sandra York (Pam Rowley's friend)

Carol Merrill (Sherry Merrill's mother)

Joe Forbes (Janet Forbes' brother)

David Hartman (Jill Wright's brother)

Carolyn Lehnus (Lisa Lehnus' sister-in-law)

Phyllis Swift (Barb Decker's mother)

Deena Rice (friend of Cindy Barlow)

David Koch (Kay Swanson's assoc. pastor)

Amy Tharp's sister

Brian Owen's nephew, James

Peter Quick

Jane Riegel

Jackie Lehnus (Lisa Lehnus' mother)

Yates Power (friend of Andrea Mezger's)

Courtney Nyberg (Kay Swanson's niece)

Carol Bryden (Kay Swanson's mother)

Norma Harris

Eldora Wieland (Bobbi King's mother)

Betsy Keyack

Michael (brother of Karen Meade's friend)

Lauren Welsh (Kathy Swier's gr.daughter)

Maurine Hoffman (Monty Hoffmans' mother)

Olivia & Daniel DuPont (family friends of Carolyn Warden)

Betty Kieser (Bonnie Funk's mother)

Kendall Griggs (Susan Hooke's uncle)

Trudy Turner

Maxine Goodloe (Emily Hallowell's gr. mother)

Frank Rhodes (Dave Rhodes' father)

Diana Stephens

Ross Barnard's grandmother BuBu

Denny Chalus (Ken & Barb Decker's friend)

Devin Butler (family friend of Angela Chaplin)

Kristi Fesler (Mona Daniel's friend)

Cassie Johnson's friends -the Coleman family

Jerry O'Connor (Irv & Jackie Durban's friends)

Ann Simms (Amy Ash's mother)

Fred Venable

Terry Walters

Jim Hajek

Ellen Lynch (Valerie Goodstein's friend)

Harold Johnson (Laurie Gilbert's father)

Owen Schoolar (family friend of Wendy Walberg/Henry/Marilyn Ott)

Matthew Mobley (neighbor of Sharon Williams)

Destiny (friend of Sharon Williams)

Marshall Johnson (Doug Johnson's father)

Brenda Schafer

Megan West (Rev. Les Ludlam and Betty's grddaughter)

Fran West

Rudi Benedix (Peter Walheim's brother-in-law)

Don Houghtaling (Eileen Law's cousin)

Joseph Clem (Jen Mell's father)

### Sympathies:

To the Miyaki family on the passing of their friend Mark Roper;

To Michele Prazzo on the passing of her brother Crandell Prazzo;

To Roberta Hamilton-Griggs on the passing of her student's brothers (Gilbert Garcia & his brother)



## Servant Spotlight: John & Caroline Merchant *by Jill Wright*



One sunny September day in the mid-1980s, John Merchant, a freshman at the University of California, Davis, knocked on a particular girl's dorm room door to ask for a date. The coed he sought was not there. Instead, he invited the room's other occupant, a freshman named Caroline, to see a movie with him that evening. Although she was studying for an exam the next morning, Caroline

accepted. Romance followed, and a few years later, in August 1989, they married.

Today John and Caroline live in Highlands Ranch with their three boys: Austin, 11; Joshua, 8; and Matthew, 5; and assorted pets. Here are some interesting facts about the Merchants:

**Backgrounds:** Both are UC Davis graduates. Caroline received a VMD degree from the University of Pennsylvania. She was a practicing veterinarian until 2000, when she quit to become a full-time mom. She now occasionally fills in for vacations and other leaves of absence for veterinarian colleagues. John earned an MBA degree from Carnegie Mellon University. He is a Business Development Manager for Cisco.

Attending St. Luke's since: 1994

**Why did you choose St. Luke's?** "We wanted to go to a Methodist church, and we found St. Andrews in the yellow pages. One morning we set out for St. Andrew's but couldn't find it. As we were driving around, already late for the service, we happened to drive past St. Luke's. The 11:00am service was just about to start, so we went there. It was obviously a mistake meant to happen. We felt very much at home at St. Luke's and knew we had found the right church!"

**In what St. Luke's activities are you involved?** In the 1990s, Caroline was involved with the Youth Ministries, helping with events and chaperoning on overnight trips. She has taught Sunday school since 1998, participates in Women of St. Luke's activities and has taken four Disciple and other classes. She served on the Staff-Parish Relations Committee (SPRC) from 2001-2004. In 2006, she was invited to again serve on SPRC.

John served on St. Luke's Finance Committee from 2002-2005. He has been involved in United Methodist Men's activities and is presently a liturgist during Sunday services.

Together John and Caroline have participated in Dinner for 6-7-8. In 2000, they started Family Camp, which has become a popular St. Luke's summer tradition. They are currently serving on the Capital Campaign Task Force Team focusing on educating our children about the campaign.

**What do you get out of your service to St. Luke's?** John: "I like the opportunity to help in areas that need help. I also enjoy working and associating with others who are interested in growth."

**What do you like best about St. Luke's?** Caroline: "I really like the variety of ways to be involved in the community, class discussions, and getting to know others. It's good, clean fun!"

## WELCOME New Members: Dec. 2006-Feb. 11, 2007



**Chris & Michelle Ellis  
Connor**

*"We felt an immediate connection at St. Luke's and knew this church and the people who attend it would help us and our children grow in Christ."*



**Ken & Linda Fligg**  
*Kendall's reason for joining: "The church's comfort with difference, return to simple ways and acceptance of new ideas and humor." Linda's: "St. Luke's is a community of care and ministers, not a community gathered by its ministers. My desire is to live, talk, be and do in the presence of God."*



**Diana Marrama**  
*"I like the spirit of ministry and all of the opportunities to serve the community."*



**Jeff & Karen Jussel  
Justin, Tyler Ryan  
& Hannah Ryan**  
*"Our spiritual growth, not only as a family but individually is extremely desired and needed to be fulfilled."*



**Jeff & Natalie Tanner  
Grace & Kostas**  
*"Strong recommendation from friends."*



**Joanna Sawyer, MD  
Chris, Veronica  
& Jim**



**Lori Lockrem**  
*"Shortly after moving to Colorado, I drove by St. Luke's. I felt a 'nudge.' A couple weeks later I attended a service. Again, I felt a 'nudge.' On my very first visit I signed up for Lynda's 'Servant by Design' class. I immediately felt at home at St. Luke's."*



**Karen Herr**  
*"The music, the good news, the spirit, the tradition, the Love!"*



**Mike & Cheri  
McKitterick  
Melissa**  
*"We have been attending for some time and came to decide that this was the right time to strengthen our commitment to St. Luke's."*



**Paul & Melissa  
Moberly  
Brittany, Madison,  
Zachary & Tyler**  
*"St. Luke's has been welcoming and spiritual."*



**Randy & Jennifer  
Richeson  
Bailey, Brooke,  
Chloe & Cybelle**  
*"We've attended for 4-5 years, all the girls attended Little School and you put a picture of our girls on the cover of the Membership brochure - we thought it was about time!"*



**Bob & Lynne Utter  
Michael**  
*"Very welcoming environment in a church big enough to have outstanding programs and small enough to be an important part of the church community. And we missed Amnesty Sunday!"*



**Mark & Kristin  
Venable  
Adam & Erica**  
*"We are joining St. Luke's because it is a place where we feel like we belong. We love having a chance to be a part of this family."*



**Mike & Linda Gibbs**  
*"We like how Pastor Janet's sermons make us think. I (Linda) love the choir."*

**Eric & Allison  
Harper  
Wyatt & Alina  
(\*No picture)**  
*"St. Luke's has been a very comforting place to come and worship. The atmosphere and the people (members) have always made this a place to want to come for us as well as our children."*

## CHILDREN'S MINISTRIES



**Jenita Rhodes**  
Director of Children's  
Ministries



**Lynne Butler**  
Assistant Children's  
Ministries Director



**Kristina Linn**  
Childcare  
Director

### PEAK Adventures —Sunday School at 9:30

Workshop Rotation Unit for March 4-April 8 will be our Lenten season focus "The Easter Story". We will be making a Good News scrapbook, learning about Easter and the events surrounding it through skits, cooking, science, playing Holy Week Jeopardy and more!

### Sly, Jr. Lock In was a HOOT!

Our 5th and 6th grade students had a great time during their annual Lock-In in February. Our theme was local missions and how they could make a difference. We heard from Cara Holmquist with DenUM about the needs of the homeless and individuals in crises and how their organization serves them. We made hygiene kits filled with items the kids has collected and brought. Each activity included a scripture and discussion that illustrated a spiritual concept. For example, they hunted for glow-in-the-dark eyes hidden all over the church then discussed the question, 'do you act differently if you know someone is watching you?' After popping a balloon to collect scripture bits telling the story of Jacob's Ladder, they discussed ways they feel God speaks to them and how to hear him when he does. We watched the movie *Hoot* then made pinecone bird feeders for home or the church back yard. A HUGE THANK YOU to the adults who provided food, companionship and great clean up support! A program like this would not be possible with such caring adults.

### Children's Ministry Education Team

This team will meet Tuesday, March 20th from 7:00 to 8:30pm in the Abraham Room. This team is responsible for the oversight and focus of the Children's Ministry programs. In March we will be planning the Summer Sunday School program hopefully to involve the movie *Cars* in the curriculum. In April, curriculum for 2007-08 Workshop Rotation year will be available and specific units will be chosen. All workshop leaders for this year are invited to come and share their wisdom. This team is for anyone who enjoys children, is concerned with their spiritual development and is willing to share their creativity. New members are always welcomed. Contact Jenita Rhodes for more information.

### Children's Dinner Theater

Our annual Children's Dinner Theater will be held on Friday evening May 4th. The theme for Children's Ministry this year is "justice", so our play will help illustrate that concept. In a fairy tale courtroom we will put the big, bad wolf on trial and try to find out if he is truly guilty or maybe just misunderstood. Auditions will be held Sundays, March 4th & 18th at 11:00am in the David area downstairs. Come be a part of this fun drama experience! Contact Lynne Butler for more information.

### Vacation Bible School

Save the Date! June 25-29, Children's Ministry will soar to new heights as we learn how high God's love for us will go. Vacation Bible School will transform the lower level of St. Luke's into a hot air balloon paradise.

## CALENDAR

### Sat. Mar. 3

Children's Ministry Live Seminar  
by Group Publishing at  
St. Luke's 8:00am to 4:30pm

### Sun. Mar. 4

PEAK Adventures 9:30 Elem SS  
5th Rotation — The Easter Story

SLY Jr. 5th & 6th Grade  
Fellowship 5:30-8:30pm

### Wed. Mar. 7

Soup Dinner and Lenten Devotion

### Wed. Mar. 14

Soup Dinner and Lenten Devotion

### Sat. Mar. 17

Discovery Club, Respite Program  
for Special Needs Children and  
their siblings

### Tues. Mar. 20

Children's Ministry Education  
Team Meeting 7:00-8:30pm

### Wed. Mar. 21

Soup Dinner and Lenten Devotion

### Wed. Mar. 28

Soup Dinner and Lenten Devotion

### Sat. Mar. 31

Easter Fun Day 10:00am-noon

### Sun. Apr. 1

Palm Sunday — Parade of the  
Palms 9:30 and 11:00 Services

SLY Jr. 5th & 6th Grade  
Fellowship 6:00-8:00pm

### Wed. Apr. 4

Children's Lenten Study  
6:30-7:30pm

### Thurs. Apr. 5

Maundy Thursday

### Fri. Apr. 6

Good Friday

### Sun. Apr. 8

Easter Sunday — No Sunday School  
- Nursery to 2's at all services

### Sun. Apr. 15

PEAK Adventures 9:30 Elem SS  
6th Rotation — Psalms and Songs

### Tues. Apr. 17

Children's Ministry Education  
Team Meeting 7:00-8:30pm

### Sat. Apr. 21

Discovery Club, Respite Program  
for Special Needs Children and  
their siblings

## FAMILY MINISTRIES



On January 7, 2007, St. Luke's celebrated Epiphany Sunday with a very special service which included the story of the three wise men that came to Bethlehem to pay tribute to the King of King's.

My family and I have enjoyed that particular service for many years which includes the procession of the 15' tall King puppets and associated characters. I had hoped that someday our family would participate in this special service, and this was the year for the Ballard's to join in! My daughters (Jennifer 14 and Kate 12) and I participated as the king Melchior, or the Asian King. Along with many other wonderful friends and families of St. Luke's, the Epiphany story came to life once again.

Though my "typical" teen-aged daughters were a bit hesitant when I announced that I had contacted the performance organizer, Nancy Cushing, and asked if we could participate this year, my girls threw inhibition to the wind and enthusiastically joined in. The event was not only a great family, social, and religious experience, but it demonstrated the true meaning of fellowship to my young impressionable teenagers.

It was significant to me to see children of all ages in the audience once again awestruck by all of the characters in the performance and realizing that, whatever the age, the story of the Nativity and the Epiphany creates a basic foundation for our beliefs. It was wonderful to be part of this year's Epiphany service at St. Luke's and hopefully the tradition will continue (in some form) for many years to come.

God Bless, *Craig Ballard and family*



## CHILDREN'S MINISTRIES



# LITTLE SCHOOL News

## The Merry Month of March

Little School is buzzing right along, hoping

that we will be able to enjoy more outdoor time and see the sunshine! We have had plenty of days to be very creative with indoor play and we would appreciate the weather cooperating to get us all outside! A Big thanks to Mr. Barry who has kept our sidewalks clear!

Registration has been completed and Ms. Tami and Ms. Kay are now very busy, putting together classes for fall of 2007. If you missed our registration, we would be more than happy to place you on our active waiting list and PLEASE remember that we do have many changes between now and fall! Just email the school to let us know! (littleschool@stlukeshr.com)

March will be full of exciting days starting with our CAREER DAYS, where our parents come to Little School and share about their professions. Ms. Carol has rounded up about 15 parents who will tell us what they do everyday at work! We have all kinds of careers from a Navy Deep Sea Diver to an instrumental Musical ensemble (with our own parents from St. Luke's)! This is a great way for our parents to volunteer, show off their jobs and give children ideas about what they would like to do when they grow up!

Watch out around March 14th for the naughty leprechauns that always visit downstairs! They love to cause mischief and merriment for our children. Everyone ALWAYS wears green because we don't want to get pinched! The best part is that we get to eat lots of very interesting green things! Chapel in March will focus on our animal friends waking up from winter and how they prepare to put the BEST PAWS FORWARD!

Just a reminder for you to post on your calendar, daytimer, i pod or blackberry: **11TH ANNUAL LITTLE SCHOOL ART SHOW ON APRIL 26TH (A THURSDAY)** from 5:30 to 7:00pm. If you have never had the opportunity to attend this event, it is NOT to be missed! Our theme this year is "Children's Bible Stories". Pastor Les has been reading to us all year long! We will have over 2,500 pieces of art work on display, depicting our favorite stories. Each room will be a different story and the whole school will be magically transformed into an amazing art gallery! PLEASE COME! We promise that you will be amazed and delighted! (Are you getting out your calendars???)

We can't believe that our school year only has about 11 weeks left! It seems like we just began but we know that is not true, as our wonderful children have grown physically, spiritually and academically! We can see it! Truly working and seeing our little miracles blossom is daily blessing.

We thank all of you for your continued prayers and support! Please come and see your ministry at work!

*Blessings, ms. Kay ☺*



**Kay Swanson**  
Director of  
Little School

## FELLOWSHIP

**Wanted: Family Camp 2007 Volunteers.** Help continue this great St. Luke's tradition! In the past Family Camp has been held at Grand River Resort (near Rocky Mountain National Park), Golden Gate State Park and other beautiful places. John and Caroline Merchant have coordinated Family Camp every year since 2000, and they are ready to pass their batons. They are currently looking for help with administration, publicity, activities, crafts, music and food. To offer your assistance, please call John or Caroline Merchant at 303-791-6251. Look for Family Camp dates on in the April *Chronicle*, and check stlukeshr.com after March 1.

## St. Luke's Ensembles Benefit Concert - WOW!



## Joining St. Luke's – A NEW Process:

1. Persons may join the church any Sunday by transfer of their membership or by profession of faith in Jesus Christ.
2. We recognize the Sacrament of Baptism from all Christian churches. Any person who has received Christian baptism does not need to be baptized again. Baptism is a covenant between an individual and God. If you have not been baptized, please contact Rev. Janet, Rev. Pam or Lynda Fickling, our Director of Servant Ministry.
3. Fill out the membership card located in the "Friendship Pad." During the Hymn of Grace, persons are invited to come forward to be welcomed into the family of St. Luke's. Or you may simply hand the membership card to one of our Pastors at any time.
4. Persons joining are asked to stay after the service to meet with our Director of Servant Ministry, to give and receive additional information and have a picture made.
5. Although not required, we encourage you to attend the "Orientation to St. Luke's" held monthly to explore St. Luke's programs, ministry and missions.
6. You will be invited to attend a New Member brunch! We will welcome you with food and fellowship and introduce you to our staff.

### The Commitment:

- To worship regularly.
- To grow in faith by participating in a small group.
- To participate in hands-on mission to the congregation, the community, and the world.
- To reach out in care and hospitality.
- To grow in generosity through giving to our shared life.



## Two Very Different Afflictions *by Susan McIntosh*

The Faith in Action class recently read two books that provide stark contrast between the haves and the have-nots of the world. Consider the following two statistics:

- Half the world – nearly three billion people – live on less than two dollars a day.<sup>1</sup>
- The richest 2% of the world own more than half of the global household assets.<sup>2</sup>

This kind of data is what we discovered as we learned about two afflictions that are taking hold of the world. One very concretely causes pain, illness and death. The other, while somewhat humorous, could be the end of us all.

The first book we studied on the world's distribution of wealth was Don Messer's thoughtful study on hunger, *Ending Hunger Now: A Challenge to Persons of Faith*. Together with Bob Dole and George McGovern, Messer presents information about why so many people struggle with hunger around the world – even here in the United States

**One (affliction) very concretely causes pain, illness and death. The other, while somewhat humorous, could be the end of us all.**

– and what we can do to help. The number of deaths due to hunger and malnutrition is like a deadly

tsunami sweeping the earth, killing 21,000 every week. While we do well to respond to major catastrophes (tsunamis, earthquakes, hurricanes), our response to this continual killer is not as aggressive.

If the world were represented by a village of 100 people, only 24 would have enough to eat, while 26 would be severely malnourished.

Hunger is not just an issue found “somewhere else,” it's here in the United States. Rev. Messer and his colleagues note that, in 2002, 7 million Americans suffered from hunger and were regularly deprived of enough calories. And, according to a recent article in The Denver Post, about 12% of Colorado households suffer from “food insecurity” each year, meaning the members of that family don't always have enough to eat.

In striking contrast to the poverty and lack of food that so many in the world experience, we in the consumer society of the United States suffer from a different epidemic. In their book *Affluenza: The All-Consuming Epidemic*, authors John deGraaf, David Wann, and Thomas H. Naylor describe how the need to consume, the need to have STUFF, has taken over the lives of most Americans, and has created an emptiness in our lives, as we struggle to find meaning and purpose in our shopping malls and our possessions. As Roberta Hamilton-Griggs put it while teaching:

*“We get dressed in clothes we can't afford,... to go into work in a car we can't afford, so we look good for a job we don't like, and don't get paid enough doing... then we eat lunch at work, which we don't really take the time to enjoy, so we can get back to work that we don't really like doing, so we can pay the mortgage for a home where we will park our car in a garage and go into a home which is too small for all our stuff that we really can't afford...”*

**Whew!**

*Affluenza* identifies the main “symptoms” of this illness with clarity and humor:

- Shopping Fever – the only way to have fun is to spend money, and spend more than your neighbors
- A Rash of Bankruptcies – In the US, it is more common to spend MORE than what you make on a regular basis, and get deeper into debt.
- Resource Exhaustion – How do we make sure that our natural resources (trees, canyons, and wildlife) will be around for our grandchildren to enjoy?
- Dilated Pupils – Did you know that the average 12-year-old is exposed to 48 hours a week of commercial messages, and spends 40 minutes a week in meaningful conversation with a parent? What values will they develop?
- Community Chills – Did you know that the number of community public sites (churches, libraries, parks) has decreased by one-fifth since 1950? What community do we have and cultivate?
- Ache for Meaning – What percentage of your day is spent doing something that you find is meaningful? Do you really find meaning in the stuff you buy?
- And on and on...

Through discussions on the afflictions of hunger and *Affluenza*, we realize that both issues require a community that will care for its members and its surroundings. We have decided that we must respond in some way, and encourage each of you to consider what you can do to help the hungry, and ease your affliction at the same time. Some of the actions we hope to take include:

- Continue to support local food banks by donating and volunteering
- Educate St. Luke's about the hunger crisis (thanks for reading!)
- Promote economic development through UMCOR, Heifer Project, and other economic development initiatives
- Buy more fair trade and organic products
- Encourage continued growth of the United Nation's international school lunch program
- Ask the US to increase its budget by 1% to provide for basic needs (such as food, shelter, education, and healthcare)
- Replace light bulbs with more energy-efficient types
- Recycle as much trash as possible
- Reduce our use of non-biodegradable items (plastic bags, Styrofoam, etc.)
- Eat dinner with our families (extended and church families as well!)
- Reduce our buying habits (don't buy anything one or two weekends a month)
- Grow a garden
- Encourage a “Green Sunday,” where no bulletins are printed
- Become an active part of the community, in our neighborhoods, our work environments, and our church

We hope to have another set of classes on *Affluenza*, where we will watch and discuss a series of videotapes. Please look for this information in the near future!

<sup>1</sup> *Causes of Poverty*, [www.globalissues.org/TradeRelated/Facts.asp](http://www.globalissues.org/TradeRelated/Facts.asp)

<sup>2</sup> “The rich really do own the world,” [www.globeandmail.com](http://www.globeandmail.com), 05 December 2006



## MUSIC &amp; DRAMA MINISTRIES



**James Ramsey**  
Director of  
Worship & Arts



**Carrie Mallery**  
Associate Dir. of  
Worship & Arts



**Kay Coryell**  
Associate Dir. of  
Worship & Arts

### Weekly Schedule for Music Ensembles

(Musical Groups to start up the week of January 7th.)

#### tuesday

6:30pm Youth Handbell Choir  
7:30pm Tintinabulators

#### wednesday

6:30pm Kidz Prayz I and II  
6:30pm Cherubs Choir  
7:00pm Tone Chimes  
7:30pm Sonrise Band

#### thursday

6:30pm Women of Note  
7:00pm Grace Notes  
7:30pm Chancel Choir

#### saturday mornings

8:00am Flute Ensemble  
9:00am Brass Ensemble  
9:40am Ministers of Swing  
10:30am Wind Ensemble

#### sunday

8:30am Children's Choir  
4:00pm Youth Jazz Orchestra  
5:00pm Off-Notes Youth Choir

Bluegrass/Old Time Gospel Group (Matt Rose) - tbd  
Rhythm Saints (Mel Scott) - tbd

**All are invited to join the music and drama program.** Questions about any ensemble, please contact Jim at x23 or jim@stlukeshr.com or go to our website **www.stlukeshr.com** to read descriptions about each group.

continued from page 1

Proceeds to Missions, from November's performances of *The Sound of Music* were \$19, 890.51. This amount was distributed as follows:

- \$2000 - Project Agape Orphanage in South Africa, for children whose parents have died from AIDS;
- \$2500 - Ecumenical Refugee Services; which helps refugees settle in the Denver area;
- \$500 - Haven/Peer 1, helps prisoners rehabilitate their lives, including women with babies;
- \$2000 - Denver Urban Ministries (DenUM);
- \$3500 - Guatemala missions - the John Wesley School in Santa Cruz del Quiche and ministries in the village of Lemoa;
- \$2000 - Dr. Manyeza in Zimbabwe, who works at the Fairfield Orphanage;
- \$500 - Missionary Janine Roberts, who also works at the Fairfield Orphanage;
- \$1000 - UMCOR for the malaria and mosquito net program;
- \$500 - Shannon's Hope, for young single pregnant women;
- \$2000 - Interfaith Community Services, Englewood, which provides help to people in the southern suburbs;
- \$500 - Denver Inner City Parish, which helps people in west Denver;
- \$1000 - Urban Peak, which helps homeless teenagers.
- \$1890.51 - Placed in Missions general account for unanticipated needs and special projects.

Additional donations to mission ministries were:

- Human Relations Sunday (January) - \$235
- Heifer Project - raised by youth - \$582.83
- One Great Hour of Sharing for UMCOR (March) - \$1765
- Appalachia Service Project - special offering - \$784.35
- Cambodia Missionary Jim Gulley - \$250
- Cambodia Scholarships - \$4800
- Mission of the Month - Local Missions - \$535 (*Shannon's Hope, DenUM, Colorado AIDS Project*)
- Offerings - Global AIDS Fund - \$322.55
- St. Luke's AIDS Walk - about \$1200 for Global AIDS Fund
- UMCOR - Midwest Storms - \$20
- UMCOR - Pakistan - \$190
- Peace with Justice Sunday - \$347.23
- Mission of the Month - Poland and Zimbabwe - \$50
- Sound of the Rockies Concert - for Poland and Zimbabwe - \$845
- Mission of the Month - Colorado Coalition for the Homeless - \$800
- Prism Concert - Colorado Coalition for the Homeless - \$659
- Christmas Guatemala Milk Program - \$894.70
- Christmas Guatemala Desk program for John Wesley School - \$1724.00
- Offering for Family-to-family program to end homelessness - \$5010 (we sent out \$1200 to help one family. We have \$3810 to help more families).

Including *The Sound of Music*, this is over \$40,000! This doesn't include youth fundraisers, UMW and small group support of mission ministries, other fundraisers such as breakfast burritos and Christmas offering for missions!

Another way that St. Luke's gives to missions is through our Apportionments. Apportionments are a church's fair share contribution to the wider work of the church. They are very important to our spirit of being connectional with the United Methodist denomination. A portion of Apportionments goes to missions - Africa University, Black College Fund, World Service Fund. Our goal is to pay a higher and higher percentage of our Apportionments every year.

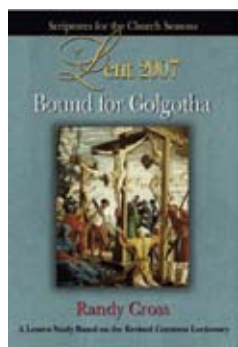
Also, you the congregation have been very generous in giving in-kind donations, including:

- Food for Denver Urban Ministries. We give special thanks for the great food drive in July!
- Clothing for Denver Urban Ministries
- Soup for Interfaith Community Services
- Baby items for Shannon's Hope
- Clothing for children in El Salvador
- Countless donations for the 100+ kits packed for homeless people
- About 200 gifts for the Giving Trees for Interfaith Community Services families and Urban Peak youth.

Special thanks to the many volunteers who delivered the in-kind donations to the right place!

Wow! In my next installment, I will give a report on St. Luke's seven 2006 mission trips and special mission projects in which you participated!

## ADULT ED



## Lenten Series Starts March 11th

9:30am Sundays,  
Classroom B

The Christian Connection class will be starting a Lenten

series called, "Bound for Golgotha" on Sunday, March 11th. Come join us! We look forward to seeing you! The books will be available in classroom B.

If you wish to attend, please contact Scott Wesson at 303-683-0196 or swesson@aimco.com

## DON'T MISS!

## March 2007

- 3/4 – Jr. & Sr. High SLY AM 9:30am  
- Bible Boot 9:30am (7-12 Grades)  
- SLY PM 6:30-8pm
- 3/7 – SLAM 6:30-8:30pm
- 3/9-11 – Jr. High Youth Quest Retreat**
- 3/11 – Jr. & Sr. High SLY AM 9:30am  
- Bible Boot 9:30am (7-12 Grades)  
- SLY PM 6-8:30pm
- 3/14 – SLAM 6:30-8:30pm
- 3/18 – Jr. & Sr. High SLY AM 9:30am  
- Bible Boot 9:30am (7-12 Grades)  
- SLY PM District Worship ©  
Grace UMC 6-8pm
- 3/21 – SLAM 6:30-8:30pm
- 3/25-31 – Spring Break Mission Trips to Mississippi & Guatemala**
- 3/25 – Jr. & Sr. High SLY AM 9:30am  
- Bible Boot 9:30am (7-12 Grades)  
- SLY PM 6-8pm
- 3/28 – NO SLAM (Spring Break)
- 4/1 – Palm Sunday**  
- Jr. & Sr. High SLY AM 9:30am  
- Bible Boot 9:30am (9-12 Grades)  
- SLY PM 6-8pm
- 4/4 – SLAM 6:30-8:30pm
- 4/8 – Easter, No SLY AM or PM**
- 4/13-15 – Sr. High Up With Youth Retreat**

## April 2007

- 4/1 – **Palm Sunday**  
- Jr. & Sr. High SLY AM 9:30am  
- Bible Boot 9:30am (7-12 Grades)  
- SLY PM 6-8pm
- 4/4 – SLAM 6:30-8:30pm
- 4/8: **EASTER** Sunrise Service with  
St. Andrew Youth ~ 6:00am  
Redstone Park  
**\*No SLY AM or PM\***
- 4/11 – SLAM 6:30-8:30pm
- 4/13-15: **Sr. High Up With Youth Retreat**
- 4/15 – Jr. & Sr. High SLY AM 9:30am  
- Bible Boot 9:30am (7-12 Grades)  
- SLY PM 6-8pm
- 4/18 – SLAM 6:30-8:30pm
- 4/22 – No SLY AM (Youth Sunday!!!)  
- SLY PM 6-8pm
- 4/25 – SLAM 6:30-8:30pm
- 4/28 – Confirmation Dinner
- 4/29 – Confirmation Sunday  
- Jr. High & Sr. High SLY AM 9:30am  
- Bible Boot 9:30am (7-12 Grades)  
- SLY PM 6:30-8pm



**Chris Wilterdink**  
Director of  
Youth Ministries

**Susan Johnson**  
Assistant Director  
of Youth Ministries

## Bible Boot Camp

by Allison Wesson, SLY youth

Noah's Ark. The Crucifixion. King David. The Creation Story. The Promised Land. The Parables. The Apocalypse. SLY listens to matching stories all the time. A few months ago, I looked around and noticed that kids my age were not exactly thrilled to learn about stories in the Bible that may contain some phenomenal discussion. There was a need to uncover a deeper meaning from childhood Bible stories.

Karin Wesson, Elizabeth Bauer, and Susan Stanley formed an idea. They started a Sunday School class know as Bible Boot Camp that meets every Sunday morning. The target of Bible Boot Camp is to delve deeper into the details, unearth the hidden significance and apply it in the world beyond the church walls. Through original curriculum, we have been journeying through the Bible and familiarizing ourselves with other religions' views on the topic being debated. Karin Wesson contributes a few words about why she began Bible Boot, "I started Bible Boot for two reasons; one because there was an expressed interest in Bible study specifically and because there were a handful of high-schoolers who were overwhelmed by the sheer size of the high school Sunday School class." Bible Boot Camp consists of a fairly small group of youth and Karin Wesson as the adult leader.

Bible Boot Camp meets at 9:30am every Sunday morning in Jim Ramsey's music office. All youth 7-12th grades are welcome and we'd love to see you there!

## CHRIS's CORNER

## Compassion

(Hey, I got some new shoes on, and everything seems all right)

*Matthew 14:14 – "And Jesus went forth, and saw a great multitude, and was moved with compassion towards them, and he healed their sick."*

**Compassion** (kam-pash'ən) – A sympathetic consciousness of others' distress together with a desire to alleviate it. (Thanks Merriam-Webster! What does that mean?)

Just turn on your radio (or youtube.com), and see if you can't find the new song by Paolo Nutini. See what trying on a new pair of shoes will do for you.

If you are not one to try on new shoes too quickly, you could ask one of the 40 fortunate servants going to Guatemala, or one of the 40 passionate builders going to Mississippi, them what their new shoes feel like after they get back to Colorado! We have 80 participants from St. Luke's, Littleton UMC, and Boulder partnering to serve others over Spring Break, and there is no way to experience compassion quite like giving yourself completely to others on a mission experience, it really puts you into a new pair of shoes and let's you walk around to get someone else's perspective.

These trips will return by the beginning of April, so check in with them to see what compassion feels like! It just might inspire you to try something new. Try on some new shoes, walk around for a bit, and see how it makes you feel!

Blessings,



**Making Super Bowl subs to raise money for missions.**

- ✧ **2007 Up With Youth:** A retreat for Sr. High youth from April 13-15. Registrations are now available.
- ✧ **Summer Mission Trips**  
Applications will be available by the end of the month.
  - Sr High to Maine from June 17-20
  - Jr High to Wyoming from July 14-20
- ✧ **Graduate Sunday comes up in May!** We need kindergarten pictures of all our graduating Seniors. Please bring them by or mail them to Chris' Office.
- ✧ **Dinner & God's Favorite** Purchase dinner tickets for the March 17 show of *God's Favorite* and help raise building supply money for the Mississippi Spring Break Work Team.
- ✧ **Easter Sunrise Service** at Redstone Park 6:00am April 8. Lead by St. Luke's & St. Andrew Youth. Come and experience a fun and unique way to celebrate Easter.



## FINANCIAL UPDATE



**Dave Cupp**  
Director of Finance

## How Bad has the Snow Hurt our Finances? *It's impossible to be sure but here are some possibilities*

- We know our attendance was affected to some unknown extent because of our restricted parking due to the snow accumulations. We know that some of you drove through the parking areas and left because there were no available spaces.
- We know our collections were down about \$15,000 for January and they were less than we normally receive on Christmas Eve. It's unknown how much of this can be directly attributed to the snow but no doubt the snow was a major factor.
- We know we spent \$5,300 for snow removal at the end of December and another \$3,900 in January. Also, we know that wasn't enough since we still had restricted parking. This spending is approximately \$6,000 more than we planned to spend during December and January even though we had already doubled our January budget for snow removal.
- We know we did better than some of the inter-city churches that depends heavily on street parking. The newspapers reported the dilemma those churches faced and the budget problems it created for them.
- We know that we owe a big THANK YOU to LeRoy Butler and his crew for volunteering their time and equipment to finish getting all of our parking back. They spent a full day and part of the second day.

**GIVING TO THE CHURCH THROUGH YOUR IRA.** I've included information about this program a couple of times before. However, I've since learned that Congress only approved it for tax years 2006 and 2007. Unless Congress approves an extension to the program your opportunity to use it will end in 2007. Since it was approved to help with the Katrina disaster they may be reluctant to do an extension. This program allows you to reduce your taxable income while at the same time you give to the church or other charitable organization. I know of one member who is planning to pay their 2007 pledge with this method and check with their tax consultant about pre-paying their 2008 pledge. We can receive your pre-paid pledge since we get them every year. If you are 70 ½ years old and have a mandatory distribution to make from your IRA, you definitely want to check with your tax consultant about this program.

**THOSE WHO PUT CASH IN THE OFFERING PLATES TAKE NOTICE.** There is a new tax law for givers who use cash donation as tax deductions. Beginning in 2007, to deduct any charitable donation of money, a taxpayer must have a bank record or a written communication from the charity showing the name of the charity and the date and amount of the contribution. A bank record includes canceled checks, bank or credit union statements and credit card statements.

Donations of money include those made in cash or check, electronic funds transfer, credit card, and payroll deduction. Prior law allowed taxpayers to back up their donation of money with personal bank registers, diaries or notes made around the time of the donation. Those types of records are no longer sufficient.

We have always gone beyond the requirement of issuing a giving statement only to those who make a one time donation of \$250 or more. We record all donations that are identifiable and provide a written giving record to the donor reflecting those gifts. Identifiable means we receive the money in a manner that allows us to know who is giving the money and how much is being given. I.e., checks, EFT, church provided giving envelopes with the donors name and the amount written on them legibly, etc.

We encourage you to use the envelopes you can find at the back of the sanctuary or in the fellowship pads for your cash donations. And, please make sure you put your name (first and last) and the amount of the gift on the envelope.

**Electronic Funds Transfer Program (EFT):** Don't forget that you get a free \$25 certificate if you sign up for the grocery certificate EFT program. See the bulletin announcements about this free certificate program for details.

## TRUSTEES CORNER

## Your Input Wanted!

As the Trustees organization contemplates the changes supported by the capital campaign, we'd like to reach out to everyone and thank you in advance for your input as choices are offered and we move forward with our building improvements. We want to make sure we're being good stewards with our church home and your input helps us to make that possible.

By the same token, just as we find with our home decisions, many hands make great work. Many of the items on our refurbishment list may be right up your alley—in that case, having your expertise or that of trusted resources will make all of the difference in the world. We're biased towards balancing good value with ownership by the people doing the work and we know our members and constituents share that value with us. Your contributions of volunteerism are most welcome as well—for example, LeRoy Butler recently coordinated the removal of snow so our parking lot is more accessible—what a difference he made for so many of us.

Please send your input, recommendations and offers of support via notes to the office marked Trustees or via email to: [kfong@att.net](mailto:kfong@att.net). Thank you for making a difference and helping us to make the most of your contributions as we work together to improve St. Luke's!

## KEEPING OUR CHURCH HOME SAFE AND CLEAN

We welcome Barry Curtis to the St. Luke's staff team as our Facilities Manager. Barry and Lisé Takayama of the Board of Trustees, have taken an inventory of the myriad collection of cleaning products stored at the church and make these requests for keeping our church home clean and safe.

1. All chemicals and cleaning supplies will be kept in the locked custodian's closet off the Goliath area. Cleaning kits for use by the congregation will be easily accessible throughout the church so that we can partner in keeping our church clean. The vacuum and brooms will continue to be stored in the Missions closet off the lobby.
2. All restroom stocking supplies will be kept in the closet across from the elevator downstairs.
3. All product requests should go through Barry Curtis or Bonnie Funk in the church office. Please do not purchase chemicals or bring them from home. Many projects that are appropriate for home settings are not safe for a public building that houses a pre-school.
4. No food or drink is allowed in the sanctuary, except water. Help us to keep our sacred space free of coffee, juice, and food stains.

Thank you for honoring these requests. It is our hope to minimize the duplication of products, stay within budgetary guidelines, and eliminate hazardous chemicals.



# The CHRONICLE

## St. Luke's United Methodist Church

8817 S. Broadway • Highlands Ranch, CO 80129

303-791-0659 • www.stlukeshr.com

NON-PROFIT  
ORG  
**U S POSTAGE**  
**PAID**  
PERMIT #7  
LITTLETON, CO

*St. Luke's United Methodist Church welcomes you to our Christian family,  
where we share life. Wherever you are in your faith journey,  
you are accepted and encouraged to grow spiritually.*

*Join us in growing together toward full humanity through living  
the teachings of Jesus: Love, Acceptance, Justice and Hope.*



## Come One, Come All to St. Luke's Annual Easter Fun Day

**Saturday, March 31, 10am-noon**

The fun includes the Easter Bunny, adorable baby bunnies to hold and photograph, Easter egg hunt, bouncy house, hands-on crafts, games, manicures and temporary tattoos, story time, cotton candy and more.

**Everyone is welcome!**

\*\*\*Volunteers Needed\*\*\*

shifts from 9:30-11:15am & 11:00am-12:30pm

Please contact Lynne Butler 303-791-0659 x11

or email [lynne@stlukeshr.com](mailto:lynne@stlukeshr.com)

## MARCH 2007 CALENDAR

Sunday	Monday	Tuesday	Wednesday	Thursday	Friday	Saturday
<b>4</b> 2nd Sunday of LENT 8, 9:30, 11am: Worship <i>"Transforming Transitions"</i> 11am: Children's Dinner Theater Auditions noon: YLT 6pm: SLY PM	<b>5</b> 6:30pm: <b>Women's Night Out</b>	<b>6</b>	<b>7</b> WNL 5:45pm: Lenten Supper	<b>8</b>	<b>9</b> Jr. High YouthQuest Retreat	<b>10</b> 8am: Work Day 6pm: Dinner Dance Jr. High YouthQuest Retreat
<b>11</b> 3rd Sunday of LENT 8, 9:30, 11am: Worship <i>"A Bold Venture"</i> 6pm: SLY PM Jr. High YouthQuest Retreat	<b>12</b>	<b>13</b>	<b>14</b> WNL 5:45pm: Lenten Supper	<b>15</b> 7pm: God's Favorite	<b>16</b> 7pm: God's Favorite	<b>17</b> 10am: Discovery Club 5:30pm: Dinner 7pm: God's Favorite
<b>18</b> 4th Sunday of LENT 8, 9:30, 11am: Worship <i>"The Questions Job Asks"</i> 11am: Children's Dinner Theater Auditions noon: YLT 3pm: God's Favorite 6pm: SLY PM	<b>19</b>	<b>20</b> 7pm: Scrapbook Circle	<b>21</b> WNL 5:45pm: Lenten Supper 7pm: WNL Music Program	<b>22</b>	<b>23</b> Guatemala Mission Trip	<b>24</b> Guatemala Mission Trip
<b>25</b> 5th Sunday of LENT 8, 9:30, 11am: Worship <i>"Partners and Pilgrims"</i> 6pm: SLY PM Guatemala Mission Trip	<b>26</b> Little School Break Youth Mission Trip Guatemala Mission Trip	<b>27</b> Little School Break Youth Mission Trip Guatemala Mission Trip	<b>28</b> 5:45pm: Lenten Supper Little School Break Youth Mission Trip Guatemala Mission Trip	<b>29</b> Little School Break Youth Mission Trip Guatemala Mission Trip	<b>30</b> Little School Break Youth Mission Trip Guatemala Mission Trip	<b>31</b> 10am: Easter Fun Day Youth Mission Trip Guatemala Mission Trip
<b>APRIL 1</b> PALM SUNDAY 8, 9:30, 11am: Worship <i>"A Tale of Two Processionals"</i> noon: YLT 6pm: SLY PM 6:30pm: Opera Colorado Concert Guatemala Mission Trip	<b>2</b> 6:30pm: <b>Women's Night Out</b>	<b>3</b>	<b>4</b>	<b>5</b> 7pm: Maundy Thursday	<b>6</b> No Little School 7pm: Good Friday	<b>7</b>