



The Chronicle

ST. LUKE'S UNITED METHODIST CHURCH

JUNE/JULY 2010

Inside This Issue:

Net News.....	3
Touched By Adoption.....	5
Children's Ministry.....	6&7
Adult Education.....	7
New Directory.....	8
Music & Drama.....	9
SLY.....	10
Methodism Musings.....	10
Graduates.....	11

and much more!

A St. Luke's Special Event The World is Our Parish: St. Luke's Annual Church Picnic

Sunday Aug. 8
11:00am-2:00pm

Bring your family and friends and join your St. Luke's family for an old-fashioned picnic. We'll have a John Wesley theme with food, games and Rev. Janet's traditional water balloon toss! Keep an eye on your bulletin for more information on this fun filled afternoon. We'd appreciate your help – if you can volunteer with food set up, table set up/take down please contact our Annual Picnic Team lead Lynda Fickling at 303-791-0659 x20 or lynda@stlukeshr.com We look forward to seeing you then!

Summer Worship Series: Sounds Like St. Luke's



It's summertime! The summer worship series celebrates our favorite music! When the clergy team was planning for summer worship, Rev. Janet tested the idea of building sermons off of St. Luke's love for music! Rev. Brad exclaimed, "That sounds like St. Luke's!"

Many thanks to our music ministers for sharing favorite songs, hymns, and anthems during our casual, come-as-you-are Sundays. Families are coming to worship on Sunday mornings (8:00, 9:30, and 11:00am) and evening (Fusion at 6:34pm) dressed for picnics, hikes, baseball games, workouts, cycling, and golf!

Thanks for Sharon Oliver for the dynamic graphic and our Altar Team for the playful matching banners. Rev. Brad and Rev. Janet with our guests, Dr. Steve Collins (June 20), and LCDR John Miyahara (July 4) will enjoy exploring the spirituality of the sounds of St. Luke's.

Thank You and Godspeed to Bonnie Funk



On Sunday, May 23, we offered thanksgiving and farewell blessings to Bonnie Funk who has served as our office administrator for ten years. She and her husband, David, are moving to Carlsbad, New Mexico, to be close to parents. They love the Southwest and the warmth! They are keeping their home here in Colorado as both boys, Sean and

Adam, and the new grand-daughter, Carson, live here. Bonnie will be working as the office administrator for an Episcopal congregation. Her true gift has been her one-on-one hospitality. She has been a gracious and caring public presence to people to come to St. Luke's.

St. Luke's gave Bonnie a finger labyrinth to hang on the wall in a place of quiet and meditation. It is a replica of the famous walking labyrinth at the Chartres Cathedral near Paris, France. The labyrinth at Chartres was built around 1200 and is laid into the floor in a style sometimes referred to as a pavement maze. Since Bonnie's faith style is mystic, this gift fits her very well. Caroline Adams write about the meaning of the labyrinth: *Your life is a sacred journey. And it is about change, growth, discovery, movement, transformation, continuously expanding your vision of what is possible, stretching your soul, learning to see clearly and deeply, listening to your intuition, taking courageous challenges at every step along the way. You are on the path... exactly where you are meant to be right now... And from here, you can only go forward, shaping your life story into a magnificent tale of triumph, of healing, of courage, of beauty, of wisdom, of power, of dignity, and of love.*

We pray blessings on Bonnie and David as they write their next chapter of life.



Why We Relay

I got a phone call a week or so ago from my best friend from college, and he uttered the three

words that change so many lives, "I have cancer". We hear these words from far too many people in our congregation, and always have multiple people going through treatment. I am not aware of anyone who doesn't have a family member, friend, or co-worker, touched by this horrible disease. **That is why we Relay.** Relay for Life is the largest fundraiser for the American Cancer Society, and also is the largest fundraiser in the country. St. Luke's will be participating in it's third Relay this July 30-31. Unlike many events that involve long distances or solo participation, Relay is a community based event for all ability levels. Our team simply has at least one person walking around the track at all times. We will camp out at RedStone Park and enjoy music, games, good company, and a chance to make a difference so no one ever has to hear the words "You have cancer" again. There will be a sign up sheet in Fellowship Hall throughout June and July for you to join our team. Please bring friends and neighbors. This is a kid friendly event, so sign up the whole family. And if you are a cancer survivor, there is a special reception and t-shirt just for you (For those in treatment or still recovering, you can "rock" your laps in a rocking chair). Come Relay with us July 30-31!

—Rev. Brad

Sunday Worship Services:

8:00am, 9:30am, 11:00am

6:34pm: Fusion

Contemplative Services also offered.

(Check website for dates and times.)

Sunday School:

Adult, Youth & Children:

9:30am & 11:00am

Nursery available for

9:30am & 11:00am services

Church Office: 303-791-0659

Fax: 303-470-5615

St. Luke's Youth.....x45

Childcare Reservations.....x47

Email: office@stlukeshr.comWebsite: www.stlukeshr.com**Preschool Office: 303-791-1982****Staff:**

Rev. Janet Forbes.....x13

Senior Minister

Emergency: 303-241-9312

Rev. Brad Laurvick.....x12

Associate Minister

Emergency: 720-296-1251

Rev. Sallie Suby-Long.....x32

Associate Minister

Emergency: 303-475-0141

James Ramsey.....x23

Director of Music & Arts Ministries

Kay Coryell.....x36

Associate Director of Music Ministry

Ken Mervine.....x42

Organist/Accompanist

Josh Carr.....x44

Fusion Worship Leader

Carrie Mallory.....x35

Assistant Fusion Worship Leader

Chris Wilterdink.....x14

Director of Youth Ministry

Susan Johnson.....x19

Assistant Director of Youth Ministry

Joely Maddux.....x11

Co-Director of Children's Ministry

Sharon Oliver.....x27

Co-Director of Children's Ministry

Samantha Leahy.....x40

Director of Childcare

Lynda Fickling.....x20

Director of Servant Ministry/Spiritual Director

Lisa Coryell.....x10

Office Administrator

Dave Cupp.....x24

Director of Finance

Lisé Takayama.....x16

Assistant Director of Finance

Barry Curtis.....x39

Facilities Manager

Kay Swanson.....303-791-1982

Director of Little School

All articles, photos and
announcements for the**August 2010**issue of *The Chronicle*are due **July 20**

Editor: Sharon Oliver

chronicle@stlukeshr.com

A MESSAGE FROM OUR SENIOR PASTOR

**Rev. Janet Forbes**

Senior Pastor

Building a Bridge of Love

The Rocky Mountain Conference of the United Methodist Church will meet at the Marriott Denver Tech Center, June 17-20. This is a gathering of representatives from the 265 United Methodist Churches in the southeastern two-thirds of Wyoming, all of Colorado, and Utah.

The delegates who will be representing this congregation are: Lynda Fickling, Betsy Keyack, Brenda Schafer, Rev. Brad Laurvick, Rev. Sallie Suby-Long, and Rev. Janet Forbes. Our candidates for ordained ministry, Dr. Steve Collins, and Laura Hehner, will be attending as well. The Conference will worship and learn together, consider legislation for the welfare of our congregations, and ordain new pastors.

A special offering will be taken to support the partnership between the Rocky Mountain Conference, Sierra Leone, and Guatemala.

Sierra Leone is ranked as the poorest country in the world, competing with Haiti for that position. It is also ranked as the worst place in the world to be 0 to 5 years of age as 43% will die. The literacy rate is 35%; 1 in 8 mothers will die during child birth. Malaria, malnutrition, tropical diseases and common diseases of measles, polio, and tuberculosis, all contribute to poor health and the survival rate. Our contribution will be used to support the United Methodist Global Health Initiative by helping to build a dormitory for the School for the Blind. Funds will also be used to provide and transport medical supplies and school supplies for UMC clinics and schools. Work Teams from the Rocky Mountain Conference go to Sierra Leone each year. Contact Hope or Les Law for more information, hopeles2@gmail.com. Visit the websites, www.hope4salone.org and www.operationclassroom.org to learn about the work of The Rocky Mountain Conference in Sierra Leone.

Rural indigenous Guatemalans have little or no access to health care and 67% of the children are malnourished. An estimated 75% of the population lives below the poverty line, with 32% living on less than \$2 a day. Literacy rates are 20% for males and 10% for females. The average schooling for the indigenous population is just 1.9 years; many students cannot afford to go to school. Education is the most effective long-term solution to the issues above, providing a way for disenfranchised indigenous people to help themselves. The Bridge of Love Offering for Guatemala will be sent to Salud y Paz, which offers health services to rural indigenous Guatemalans, and Pura Vida for their student scholarship program. Volunteers in Mission teams from St. Luke's and the Rocky Mountain Conference go to Guatemala each year on medical/dental, construction, and relational missions. For more information, contact Mark Ely, marcos@puravida.org, www.puravida.org or Dr. Phil Plunk, pplunk@pctx.com, www.saludypaz.org.

Thank you for participating in our loose change offering for these projects throughout the



Now Welcoming Stephen Ministry Applications!

- A Stephen Minister is:**
- A child of God who walks beside a person who is hurting
 - A caring, Christian friend who listens, cares, prays supports and encourages
 - A person who provides emotional and spiritual care to others

St. Luke's Stephen Ministry prepares people to provide confidential, one-to-one Christian care to individuals in our congregation and in the community who are experiencing difficulties in their lives.

Would you enjoy ministering to others in this way? Does this type of ministry reflect some of your interests and gifts? Do you feel as though God may be calling you to consider this ministry? Do you know someone who would be a wonderful Stephen Minister? We invite you to pick up a Stephen Ministry application at the Get Connected Table or to pick up an application and pass it along to someone who you believe would be a great part of this ministry. Please turn in applications to the St. Luke's office by Sunday, June 13 (if you need a little additional time to complete the application, just contact Rev. Sallie).

If you have questions or would like more information, you may contact Rev. Sallie at 303-475-0141 or sallie@stlukeshr.com or anyone on our Stephen Leader Team – Nancy Abbot, Bryan Hutchinson, Janet Forbes, Laura McCarthy, Jerry McLeland, or Sherry Merrill.



Rev. Brad Laurvick
Associate Minister

Take a class. Change your life.

Some of you may have heard that I am learning to golf. I have always been hesitant to learn golf- I was worried I wouldn't be any good, that it would be hard to learn, and I didn't think I had time. Well, turns out I was wrong... and I'm glad I was.

You see, I found a really good instructor (and when I said Jim during Children's Time, I didn't mean Ramsey.) I found someone who would work with my learning styles, offer me insights, and spend time helping me grow into it. I also realized that I didn't have to do this alone, and that has made it easier. I have found good friends and new friends who are willing to practice with me, encourage me, and chase down my wild shots. I also found that I began to make time once I felt a connection to the game and the people I was sharing it with.

In this issue of *The Chronicle*, you will find a lot of information about the adult education classes St. Luke's will be offering throughout the coming year. I know you may not be too sure about these... Maybe you have been hesitant to take a class- worried you don't know enough, that it would be hard to learn, or that you don't have enough time... Well, let me encourage you- we have great facilitators who will be guiding and sharing with a classroom of people who are doing this together, growing into the material. I would encourage you to invite a friend to take a class with you, and realize you will make many, many new and deeper relationships during your time in any class. And once you begin to connect to the people and the material, you will make time to share in this new passion.

Take a class. Change your life.

Net News!

The second meeting of the 2010 Common Table was held on Monday April 19, with about 30 people in attendance and a fantastic pot-luck meal. Rev. Sallie Suby-Long led the conversation around the results of the Wellness Survey, which was offered to the congregation earlier this year. In

short, the respondents want to grow most in the areas of Emotional, Social, Intellectual and Vocational wellness, and expressed a lot of interest in Managing Stress, Parenting, Spirituality and Leading Balanced and Integrated Lives. To get an idea of how this looked on a more personal level, we each filled out a Life Cycle worksheet to represent the amount of time we spend weekly in critical wellness areas – then we looked at whether there were changes we'd like to make. It was a real eye-opener! Look for more news on Wellness as St. Luke's integrates this important feature into our teams and community.

The next meeting of the Common Table will be held on September 20. Minutes (thanks to Les!) are posted on the website, and provide a glimpse into the details of our meetings. As we anticipate St. Luke's next 25 years, the Common Table will look at Our Future - the next chapter, our commitments, and the next season – and how we integrate this vision with who we are as individuals and as a community of faith. Your participation and contribution is invited; all are welcome here!

District Superintendent, Rev. Olon Lindemood, Sends Message of Thanks

The Rev. Olon Lindemood, who has served as the superintendent of the Mile High-Pike Peak District from 2007-2010, has been appointed by Bishop Elaine Stanovsky to serve as the senior minister at Sunrise United Methodist Church in Colorado Springs. Rev. Olon has been a faithful ambassador and frequent guest of St. Luke's in his role to support the leadership and ministries of the congregation. He has preached every fall for the last three years and been present to bless the appointments of both Rev. Brad and Rev. Sallie. He sends words of thanks to St. Luke's: "It was a sacred gift to walk with you these past three years! God bless the years ahead!" We offer our prayers and partnership as he moves back into pastoral leadership.

The Rev. Dr. Melanie Rosa has been appointed by Bishop Elaine to become the new superintendent of our district which includes the United Methodist churches from Breckenridge through the southern foothills and suburbs of Denver and the cities of Castle Rock, Monument, and Colorado Springs. Melanie is currently appointed to Lakewood United Methodist Church in the Metropolitan District, where she has served as senior pastor since 1995. Rev. Rosa received her theological education at Iliff School of Theology, earning both Master of Divinity and Doctor of Ministry degrees. She has served Grace UMC, Denver, Eagle and Gypsum UMCs and Trinity UMC in Colorado Springs.

Rev. Melanie will be preaching at St. Luke's on Sunday, September 27 and will enjoy time over lunch with the Staff Parish Relations Team who has direct relationship to the superintendent for the appointment of clergy and the certification of candidates for ordained ministry.

Update Database Information

Does our church database have YOUR family information correct? Here is your chance to update YOUR record for our annual GuideBook & Directory. Are there any changes that may have occurred in YOUR family over the past year...change of phone number?...new e-mail?...have you moved?...are you preparing to move soon?...new baby?! Please contact Lynda@stlukeshr.com or 303-791-0659x20 with any changes by June 20, 2010. *This Guidebook will be mailed to all of our friends and members of St. Luke's only.

Café St. Luke's: An orientation of St. Luke's

Join us for **Coffee & Conversation** about the **History** of St. Luke's, the **United Methodist Church**, our **programs** and **ministries**, plus a **tour** of our facilities!

9:30am Sunday July 11

Meet Lynda Fickling in Room 206 – All are Welcome!





Lynda Fickling
Director of
Servant Ministry/
Spiritual Director

We are Called to Serve

We invite you to stop at our Get Connected Center to discover more about our programs and ministries

*NEW Sanctuary Care Team:

Come join us one Saturday a month and help keep the Sanctuary sparkling and looking its Sunday's best. Duties and Saturdays will be scheduled according to church needs. Contact Val Clark at Sanctuary2010@att.net.

***NEW ~ Annual Church Picnic Team:** Help plan and execute our picnic in August! We are looking for folks who enjoy a good party, to help us create a fun and memorable day. This team will meet for a few organizational meetings and help the actual day (August 8 this year). If you've always wanted to volunteer but cannot commit to a long-term group, this one is for you! First meeting will be in June! Contact Brenda Schafer bschafer63@gmail.com or Lynda Fickling lynda@stlukeshr.com

Ushers: Assist in the Sunday morning services with hospitality and helping hands. Ushers typically serve on a quarterly basis at the time of service that you regularly attend. If this is an area you would be willing to serve in, please contact Shawn Slade 303-660-6113 shawn.slade@leicaus.com or Dick Frame 303-791-4251 rframe5492@aol.com

ST. PAUL'S UMC SUNDAY MEAL PROGRAM:

1615 Ogden St., Denver, CO 80218. Provides a hot meal to those in need on Sunday's. St. Luke's helps serve on the 3rd Sunday of the month. Contact: Marie Blue, 303-683-2601

LOVE INC. (Love in the Name of Christ): Is a network of churches that links church ministries and volunteers to our neighbors in need. It brings resources together so more needs can be met. Services they provide include housing assistance, clothing and food banks, childcare, transportation and job counseling. Love INC of Littleton serves the southwest metro area - south of Hampden and west of University. Volunteers needed in many areas of service. Contact: Rev. Doug McKinney 303-732-5925

To Discover more about your own Spiritual Gifts and where you may serve best, visit http://stlukeshr.com/p_volunteer.asp, and beginning serving where God has given you talents and gifts!

"We are God's work of art, created in Christ Jesus for the good works which God has already designated to make up our way of life."
Ephesians 2:10

If you are searching for a place to connect at St. Luke's, please contact Lynda Fickling, Director of Servant Ministry 303-791-0659 x20 lynda@stlukeshr.com or Karin Wesson, Team Leader for Lay Leadership, 303-683-0196 karin@thewessons.com



Week Ending June 4, 2010

Please stop by the Information Center, by the front door, where you will find the updated Prayer Concerns List (on yellow paper) and the Armed Forces Prayer List (on blue paper). Look it over and Rev. Sallie Suby-Long know if you have any additions/removals from either list. 303-791-0659 x32, leave a note on the front desk, or email at sallie@stlukeshr.com

Paula Strader (Sandi Miyaki's sister)
Lori Lieberman
(friend of Jane Damsgard)
Schelly Thompson
(Sandy Thompson's sister-in-law)
Jed Bennett (Fred & Jean Bennett's son)
Mark Bartellina (Mike Hutchin's cousin)
David Joseph
(friend of Bobbi King/Marie Blue)
Roberta Towell (Jon Sreaty's sister)
Daniel Winkle (friend of Gail Strawn)
Darrell & Billie (wife) Aderman
(friends of Rick & Louise Jasper)
Ross Magaughy
(friend of Rick & Louise Jasper)
Jerry Miyaki (Mike's uncle)
Louise McGill (Sharon Oliver's mother)
Rosie Shaw (friend of Eric Ransick)
Lolita Fernandes
(friend of Joely Maddux)
Zach Bingham
(3 mo. nephew of Ashlee Favilene)
Bill Harold (Nancy Obertier's cousin)
Donna Craven (friend of Cindy Barlow's)
Maria Viera Harris
(friend of Cindy Barlow's)
Mary Hogan (friend of Sharon Scholle's)
Chad Swier (Kathy Swier's son)
Norma Whitaker's mother, Jane
Denise More (friend of Jenny Stevenson)
Emily Geraghty (3yr old- Little School)
Thelma Noah (friend of Rachel Nolder's)
Joan Dixon (friend of Eileen Law)
Keaton Wong (friend of the Takayama's)
Chris Kellams (friend of Joely Maddux)
Dorothy Hagan (Doug Hagan's mother)
Griffin Bohan (LS contact)
Julie Ramsett
Austin Lockrem (Lori Smith's father)
Jack Fleming (Julie Brower's father)
Richard Swier (Dan Swier's father)
Brenda Zachek (friend of Kathy Swier's)
Dean Mathena (Rick Jasper's friend)
Terry Bohn (friend of Lisé Takayama,
Kam Boles, & Joely Maddux)

ARMED FORCES PRAYER CHAIN:
Mark Thompson, Ed Herring,
Josh Brady, Jeremy Brady,
Colin Gabriel, Dustin Ellington,
Justin Boggy, Lt. Jeff Hamer,
and Christopher Gardner.

SYMPATHIES:

To Cindy & Jeff Barlow on the passing of their friend, Kamela Anderson;
To Lisé Takayama & Kam Boles on the passing of their friend, Barb Wilson, May 2;
To Rick & Louise Jasper on the passing of their friend, John Larsh, April 28;
To Mike & Diana Stephens on the passing of Mike's mother, Bobette Stephens, May 5;
To Paul & Michelle Peterman on the passing of Paul's mother, Elizabeth "Betty" Peterman;
To Jon & Linda Sreaty on the passing of Jon's brother, Joseph Sreaty, May 9; on the passing of Linda's maternal aunt, Sarah Johns, May 15; and on the passing of Jon's brother, Bob, on June 5.
To Connie & Floyd Shoemaker on the passing of Connie's mother, Mildred Johnson, May 7;
To Jon and Linda Sreaty on the passing of Linda's maternal aunt, Sarah Johns, May 15; to Jon and Linda Sreaty on the passing of Jon's brother, Bob, on June 5.

MARRIAGE CONGRATULATIONS:
To Dayna Hudson, daughter of Lee and Debbie Newby, on her marriage to Andrew Hudson on May 8.

NEW BABY CONGRATULATIONS:
To Steve & Jimetta Pyles on the birth of a granddaughter, Emily born 5/25.

Did you know...

We have a wonderful team of folks that quickly prepare our *Chronicle* for mailing and then rush it to the post office? Working diligently to get the newsletter to your doorstep: Steve & Jimetta Pyles, Jack & Betsy Goodman, Keith & Marilyn Ayers, Ken & Barb Decker and Cindy Markham. **Thank you to our Quiet Servants.**

Missions Opportunity:

The Denver Inner City Parish is organizing field trips over the summer for parish youth. Volunteers will be needed to accompany them on the trips. If you are interested in being a chaperone or a driver, please call Andrea Kirchhoff 303-683-6652 or akirchhoff6652@yahoo.com. You may also call Hilary at DICP 303-629-0636 for schedule information.



Rev. Les Ludlam
St. Luke's Lay
Associate Pastor
1993-1997

More from Les: Our Expectations Shape Our Perceptions (or "Look before your bite!")

My father, Verne, needed to hire a new mechanic at his auto repair shop. Business had grown to the point that he couldn't do all the work by himself so he began to look for a mechanic that he could rely on. Finally he hired a young man that he knew from our church. Bob was handy with cars, had some experience as a mechanic, and seemed to be quite reliable. Also, he had just gotten married and was looking to "settle down" into a regular job now that he had a wife! Bob and Edna moved their small trailer house to an empty lot near the shop. Edna was working half-time at a local school and would stop by the shop in the afternoon after she got off work. Things were going pretty well for the young couple. And they were so in love!

But there must have been some little tiff one morning, for we saw Edna leaving for work without the usual friendly "Hello, Good morning!" And Bob didn't quite seem himself at the shop that day. That afternoon, Edna appeared at the door of the shop with a small box of Bob's favorite candy and some flowers in her hand. She looked around the shop, and then spotted the familiar grey-green coveralls. He was bent over the fender of a pickup, working down deep in the engine cavity so all she could see were back and legs.

Seized by inspiration, Edna put down the flowers and candy and quietly crept over to the pickup where he was working. She looked side to side, then stepped forward, bent over, and bit him on the backside! "Whaah," came the shout from the engine compartment of the pickup! He straightened up suddenly. **Bong** went the hood of the pickup as it was struck by a human head!

Bob had really liked those grey-green coveralls, ever since he had seen Verne wearing a pair. They were rugged, inexpensive and since they were about the same size, Verne had offered to loan him a pair until he could buy some of his own. The man stood up and turned around with a look of pain, surprise and disbelief, to see Edna's face equally contorted with disbelief, panic and embarrassment! "I... I... Oh, dear Lord!" The man in the gray-green coveralls, working on the pickup that afternoon, was not Bob but my father!

Red-faced, Edna started to try to explain when she heard laughter! Bob had just come in the door as the bite was accomplished. Verne was still experiencing a little shock, but he quickly realized the mistake. He smiled, and rubbing the back of his head with his left hand, took Edna's hand with his right. "That's OK, it was getting pretty dull here this afternoon anyway!" Everything seemed to end well; they all had a good laugh. But Edna didn't seem to come by the shop in the afternoon quite as often after that. It would take some time for her to laugh about the incident. She hadn't tested her assumptions and her expectations before she took action led to a result that was, at least, very embarrassing.

How often, I wonder, do we size up a situation, and then take action without asking ourselves if our assumptions are correct? How often do we let our expectations distort our perceptions? *God bless us all! Rev. Les*

St. Luke's to Host Founder of Just Faith Aug. 14

In May, St. Luke's graduated its first Just Faith class. Just Faith is a 30-week program in which participants study our Biblical call to compassion and social justice. Through books, videos, speakers and "Border Crossing" experiences, we learn about the issues facing our community and the wider world. You are invited to a half-day Just Faith workshop on Saturday, August 14, from 8:30am to noon at St. Luke's. The founder of Just Faith, Jack Jezreel, will be delivering the workshop. This is a tremendous opportunity to get an introduction to the Just Faith program. Cost is \$15 per person. Please register on-line at www.stlukeshr.com by August 7. If you have any questions contact Betsy Keyack (bkeyack@att.net 303-346-7057) or Peter Reif (peterreif@msn.com 303-219-6060)

TBA: Touched By Adoption

is a new group for anyone who literally has been touched some way, any way, by adoption. Being an adoptee myself and connecting with many people here at St. Luke's who have adopted and others who are adopted, I thought it was time to start a group so that we can connect and talk about our stories. Each one of us has a unique story that has brought us to where we are spiritually as well as parentally, and I find each person's story is fascinating and can help others to grow if we are so inclined to share it. How and where we take this group will be determined by the group. About 7 years ago I searched and found both birthparents, and a half brother. This full circle journey has answered many questions for me as well as made me closer and appreciate my parents even more. However, searching is not for everyone. I wanted to have a group of people come together where it is a safe environment for all of us to share their personal story and perspective of adoption, but also one where we can support each other. Whether you are an adoptee, a birthparent, or an adopted parent, a sibling of an adoptee, a parent who has considered adoption, maybe have a sibling who has searched, are a spouse of an adoptee: ANYONE who has been touched by adoption you are WELCOME to join us for our next meeting June 30 at 6:00pm in Room 213. If you are in need of childcare for this meeting please contact Sam Leahy 303-791-0659 x40. If you have any questions, feel free to contact me, Susan Hooke, at sehooke@msn.com



The golf committee has been meeting and planning the 7th Annual Golf Event

which will take place August 28 at Highlands Ranch Golf Club. The goal of paying off the bus is well in sight. This

has been a project of love and mission over the years. We will be able to pay off the bus if we have great participation this year. We are looking to have 120 players for the event. Therefore, if you work with or know some golfers, we would encourage you to let them know about our "Ministry in Motion" tournament. They would be welcomed warmly by our players. Not only would they have a good time but we'll feed them too.

If you don't play golf, that's alright. We have need for a number of volunteers. You, too, can become a part of the event by helping us put on a memorable tournament. Just contact us at the golf table before or after church service. Many hands make light work.



The Bongo Beat!

Woof! Woof! It's me Bongo! I am still wound up from the wonderful Sunday School experience I had back on May 30! It was a beautiful morning, and I got to spend it with

some great kids too. First Miss Sharon and Miss Joely introduced me to all the Sunday School kids, I received so much love and nice pats from all the kind children. I also showed them how my fluffy paws can type on the typewriter-although I think most were pretty skeptical! Well, that day was a very special Sunday School morning because we did a fun review the whole Sunday School year. Wow, have these kids learned a lot about God, Jesus and the Bible! We spent the whole morning outside where we began by singing some favorite songs from the year. The kids then participated in a fun quiz about everything they learned over the year. They had answers about Noah, Samuel, the Christmas Story, The Beatitudes, the Shema, The Greatest Commandment, Holy Week, and key peacemakers in the Bible as well! My Lhasa mind was completely blown! These St. Luke's kids really know their stuff! Then it was time to get silly in five fun-filled games recapping the whole year. I loved seeing kids and their teachers wiggle themselves in and out of hoola hoops, and untangle a human knot! And humans have the nerve to laugh at me when I chase my tail! The morning ended with some nice cool popsicles, ahhh refreshing! I can't wait to learn more this summer. I heard something about a Galactic Blast, hmmm... I wonder if that is some sort ice cream treat? I also heard we will be learning about a fellow named John Wesley, hope he carries treats in his pockets! Have a great summer! Love, Bongo



Joely Maddux
Co-Director of
Children's Ministry



Sharon Oliver
Co-Director of
Children's Ministry



Samantha Leahy
Director of Childcare

St. Luke's Kids
Growing with God

News & Notes:

Vacation Bible School is here!



We are so excited to welcome children from our community to St. Luke's to enjoy a week of fellowship and learning and praise June 21-25. We are transforming the church into our own Galactic wonderland and have such fun and meaningful activities planned for the 300 kids heading our way. We will do it all again July 13-16, when we roll out our Evening VBS.

Wacky Wednesdays are in full swing and it is so wonderful to see St. Luke's full of summer smiles on a Wednesday morning.

We are also putting together the Sunday School servant schedule for the year and have opportunities for anyone who would like to join us on a Sunday morning. We are so blessed to have amazing volunteers and an amazing Sunday School program. Come and join us!

If you have any questions about Children's Ministry programs and events at St. Luke's please contact Joely Maddux x11 joely@stlukeshr.com or Sharon Oliver x27 sharon@stlukeshr.com. And be sure and check the St. Luke's website for more information and to register for activities.

CM Servant Spotlight: Preschool Music Team

We want to take a moment to express deep gratitude to Megan Pressman and Suzanne Sharpe, who led pre-school music all of last year! These are the precious 15 minutes of Sunday School where our littlest kiddos get the chance to share birthdays, dance, jump, be silly and even learn sign language. All while expressing their love for God, Jesus, and their church! These moments would not be possible without Miss Megan and Miss Suzanne willing to share their time and joy, and to be just a tad silly themselves! This year we welcome Melanie Kirkpatrick and Elizabeth Billups who will join Megan in leading another year of fun Sunday School music! Thank you all, St. Luke's is so blessed by your presence, patience, and passion for fun!



SLY, Jr. Recap

by Molly Howard, 6th grade

This year in SLY, Jr., we did many activities from bowling to going to a Seder Meal! SLY, Jr. is a great place to meet new friends and to have fun. Ms. Sharon does a great job of making kids feel welcome. She is a wonderful teacher and she loves to help kids. We learned new prayers by making Prayer Pots with Mrs. Brown.

"They were a blast to make and it got our hands dirty," says Megan Howard (5th grade). Another thing we did was we helped Mr. Lee Shayler, who is blind, walk his 519th mile on his journey to walk 1000 miles. We made a big difference to him and he made a difference to us. Our group felt so good about ourselves, and wanted to do it again! SLY, Jr. is open to all 5th and 6th graders and meets about every two weeks from Oct. through May. We also play a lot of games when we meet. SLY, Jr. was a great experience and I am looking forward to going to SLY (St. Luke's Youth). If you are in 5th or 6th grade, you should go to SLY, Jr., it will make a difference in your life and others' lives.

Upcoming Events Calendar:

Sundays

June 6-July 18 - "Galactic Blast" Sunday School rotation in PEAK

Wednesdays

June 9, 16, 30 - Wacky Wednesdays

June 21-15 - Morning VBS
9:15am-12:15pm

July 4 - No Sunday School

July 13-16 - Evening VBS 5:45-8:00pm

Wednesdays

July 14, 21, 28 - Wacky Wednesdays

July 22-26 - Family Camp

Sundays

July 25-Aug. 29 - "The World is Our Parish"/John Wesley rotation in PEAK Sunday School

A "Tale" of Triumph!

by Lynne Butler

The annual Children's Dinner Theater production was held on April 30. The title was *The Tale of Snow White* and it fit perfectly with the Global Board of Discipleship family theme for 2010–Peace. The children auditioned in March



and had only eight rehearsals before the big night. During that time, parents were busy building sets, gathering props, fitting costumes

and getting the word out about our play and mission. Cindy Raap, mom to Christopher, noticed that everyone had a great time and appreciates St. Luke's support of the dinner theater.



Steve Riley, a founder of the Nuba Water Project and St. Luke's member, shared with the children about the need for fresh water in Sudan. Nuba Water Project was the dinner theater mission this year because it helps families and also promotes peace in Sudan when there is enough fresh water for everyone. We are so happy and thankful

to have raised a record amount of money this year—\$1406 was presented to Nuba Water Project. Jenna Nolder said "I liked making the jars that we used to collect donations".

Jenny Stevenson, mother to Jade, commented, "As a parent it is so great to have your children participate in things that give them the opportunity to grow and change the world for the better and this play did that for Jade!"

The Fellowship Events Team, led by Lisa Lehnus and Mona Daniels, provided a delicious Mexican food meal to kick off the evening. Sean McCurdy, dad to Faith, appreciated the dinner team, "What a treat to have dinner there and ready to go before the performance, so we could concentrate on getting the kids dressed and ready without having to worry about dinner...Thank you!"

The Cherubs Choir, led by Suzanne Sharpe, sang several Snow White-themed songs and provided the perfect opening act for the play.

One young play attendee, Owen Miller enjoyed the play, but said "Next time there should be a shark in the play". His sister and play performer, Sophie Miller, thought "The play was the most awesome thing I have ever done."

The children gave a wonderfully funny and entertaining performance. Applause was plentiful and the children did a great job of showing peace through the play... Villagers from different ways of life found a way to work together and save Snow White from the Evil Queen. They learned that it is better to work together for a solution than to fight. Alyssa Nelson said "I really liked being in the play and would like to do it again sometime". Savannah Brassell sums it up well when she says "Being part of the Snow White play was so great—I want to be in every play, ever!"

Adult Education: A Great Experience

by Jennifer Jiang

What people are saying about it:

Judy Dreyer began taking Disciple classes because she wanted to be more comfortable with the bible and wanted to know more, and feels she now has a better understanding. Because the reading is required it motivates you to get it done. She enjoyed great facilitators and getting to know church members better. She describes the class as a comfortable environment where even if you are shy you can feel comfortable asking questions and sharing feelings. Having finished Disciple 1-4 and Jesus and the Gospels, she plans to continue to be involved with the Living the Questions study group series.

My decision to take a class was similar to hers; I felt I needed to know more. Part of my drive was also that I wanted to have a better base for answering questions my kids will have growing up. Although Disciple 1 was a lot of reading, I'm so glad to have made it through the Bible once. In the classes I have taken I have also truly valued the idea sharing and unconditional support of our group. As Judy described this environment enables you to really get to know fellow church members and cultivate long time friendships.

Bob and Christy Rowe completed Disciple 1 this year. Bob was motivated to learn more about the bible and was not disappointed. He felt that by having to keep to the reading schedule they made it through, which they may not have on their own. He enjoyed the discussions coming from many different backgrounds and viewpoints and the extensive knowledge Janet had to offer as the facilitator. He went into the class with an open mind for change and came out with a deeper faith. They enjoyed coming to the Wednesday night class which was great for adults with kids participating in Choir and there were also many couples in the class.

Class Offerings:

Disciple 1 – "Becoming Disciples through Bible Study" A 34 week class that offers an overview and introduction to the Bible as a whole. Students will be exposed to the whole bible during this course.

Disciple 2 – "Into the Word, Into the World" A 32 week class that invites you deeper into the scriptures including Genesis, Exodus, Luke, and Acts.

Disciple 3 – "Remember Who You Are" A 32 week class that invites you deeper into the scriptures including the work of Paul and the Prophets of the Old Testament.

Disciple 4 – "Under the Tree of Life" A 32 week class that speaks to both heart and head and carries the reader toward the climax of the message and completion of the promise. Concentrates on the Hebrew Writings; Ruth 1 and 2, Chronicles, Ezra, Nehemiah, Esther, Job, Psalms, Proverbs, Ecclesiastes, Song of Solomon, Lamentations, and Daniel as well as New Testament Scripture the Gospels of John, James, Jude, and Revelation.

Jesus and the Gospels – A fifth installment of the 32 week Disciple series, this class delves into the life of Jesus as told in the gospels.

Just Faith – This 30 week class invites you to delve into the many issues of justice and social change that face people of faith today.

Short Term Bible Study – 8 week classes including: Introduction to the Old Testament, Psalms, Introduction to the New Testament, and the Gospels.

There are also other offerings and drop-in classes including adult Sunday School and study groups throughout the week with more information to come in August.

How to get involved:

Sign up will be electronic, so you can do it directly from your computer at home! Look for links on the St. Luke's website coming this August. But, don't panic if you need assistance! We will have a table set up with a computer and a team member to help you sign up if you prefer to do it in person at the Church Picnic on August 8. If you would like to be a class facilitator or assistant we are still looking for some passionate people. Call the office to let us know.

We look forward to seeing you in a class this fall!



UMW Spring Tea: "Coffee, Tea and Bling" Our annual Spring Tea was on Sunday, May 2, 2010. Thank you to the Ladies of all ages who joined us for sandwiches, scones and desserts. All enjoyed a fabulous performance by the girls' choir. A big thank you to everyone who donated jewelry, making it possible for UMW to raise almost \$700 for the event's mission, Denver Children's Home. The unsold jewelry was donated to Dress for Success.

UMW Fall Kick-Off Our annual kick-off event will be held on Sunday, September 12. Mark your calendar and then check next month's *Chronicle* for more information.

Subgroups of UMW:

Simply Saturday: Women ages 18 & up are invited to join us in mission work, time for faith, devotions and building relationships. Meetings will be from 8:30-10:00am depending on the mission that month.

July 17: Food Bank of the Rockies (7:30am-noon) Mission Focus: Canned Foods. Childcare is unavailable due to us being off site.

Aug. 7: Annual Organizational Meeting (set events, dates and leadership) Mission Focus: School supplies. Please bring a breakfast item to share with the group. For more info, Elena Lynch elenalynch@gmail.com or Lynda Fickling lynda@stlukeshr.com

Evening Book Group: Fourth Monday of the month, 7:00pm. Meets through the summer. For more info, Renae Parra at 303-683-0872.

Itch to Stitch: Third Wednesdays of the month, 7:00-8:30pm downstairs near the Children's Library. Fran West at 303-797-7107.

Women's Night Out: First Monday of the month, 6:30pm various locations: **Mon., Aug. 1** – Mellow Mushroom. Lynda Fickling at 303-791-0659 x20 or lynda@stlukeshr.com

Upcoming Rocky Mountain Conference UMW Events: visit www.rmcmw.org

Upcoming National UMW Events: visit Women's Division website: <http://new.gbmg-umc.org/umw/>



Spring Workday Success!



We'd like to recognize the leadership of Candy Keller, and the volunteers from our Scout Troop 633, Trustees, Staff, the Simply Saturday group, and many others who joined us on a chilly 1st Saturday morning in May to spruce up our landscaping in time for Mother's Day.

In just 4 hours we refreshed the bark, dug out two drainage channels we hope will solve runoff at the NW entrance, and the fire escape walkway along the west side; we modified and restarted our meditation water feature, pulled a LOT of weeds, dug out two overgrown shrubs in front, tore apart and recycled the old basketball hoops that had seen better days, completed our 1st mowing of the season, and generally did a lot of picking up – especially around the back of the garage.

Candy is continuing to look at ideas to improve our First Impressions outside, if you have ideas you'd like to propose, let her or one of the Trustees know. **We'll have our next Work Day on June 26, from 8:00-noon.** We can really use your help. Please save the date now, and plan to join us. Thank you!

OUR COMMUNITY

It's Picture Time Again!

Can you believe it's already been three years since our last church-wide pictorial directory? Well, it has, and due to the overwhelmingly positive feedback from all of you regarding our 25th Anniversary Directory in 2008, we have again contracted with locally owned Bettinger Photography to produce our 2011 pictorial directory.

To accommodate families with children home from college for the summer, these families can have their portraits taken at Bettinger's studio on Saturday, August 7. If August 7 does not work for you, you can schedule an appointment on another date while your children are home from college.

Bettinger Photography will hold photo shoots at St. Luke's from Friday, October 15 through Thursday, October 21, 2010. You can also opt to have your family portrait taken at Bettinger's studio any time from now through January 8, 2011.

Scheduling your appointment is easy. Your options are:

- Call Bettinger Photography at 303-400-6023.
- Go online to bettingerphoto.com, click on the "Schedule a Directory Appointment" icon, and follow the simple online instructions.
- Sign up in the Narthex – dates yet to be determined. Please visit stlukeshr.com/photodirectory for the sign-up dates, which will be posted soon.

All participating families will receive a free 5x7 portrait, a complimentary pictorial directory, plus the option of purchasing specially priced packages.

Bettinger Photography is conveniently located at 2431 South University Boulevard, one-third of a mile north of Yale.

If you have any questions about the directory, please contact either Kris Kinney, 303-346-2740, kmk830@earthlink.net, or Jill Wright, 303-927-6345, jill@jillwright.com.

MARRIAGE ENCOUNTER



What is Marriage Encounter United Methodist?

Marriage Encounter is for couples with good marriages who want to make them better. A Marriage Encounter Weekend is your time to escape from your busy everyday life, put God at the center of your marriage and

rediscover the one you love. During this weekend, you will learn to rekindle your romance as trained, volunteer couples share their own life experiences. The goal is to help you restore and improve your communication skills and understand your own feelings about various aspects of your marriage.

Your discussions as a couple will stay between the two of you, taking place in the privacy of your own room. This is your chance to spend an entire weekend focusing on your spouse and your relationship, working toward God's ideal for marriage and get beyond the frustration, disappointments or loneliness that can be a part of everyday life. Marriage Encounter is affiliated with the United Methodist church, however, couples from all denominations are welcome.

Reservations are being made now for July 16-18, 2010 near C-470 & Ken Caryl Blvd. Go to www.colorado.encounter.org Contact: Lee & Debbie Newby at newbyfamily@mac.com or 303-791-4098 or pick up a brochure in the Narthex.



James Ramsey
Director of Music
Ministry & the Arts



Kay Coryell
Associate Dir. of
Music Ministry



Ken Mervine
Organist/
Accompanist

The Wesley Players Children's Theater and Melodrama Needs You!

This summer and early fall the Wesley Players will present two terrifically fun shows for all ages. **The first is *Dear Edwina*.** This children's theater piece is a one act musical about a thirteen year-old Edwina Spoonapple would do just about anything to be a part of the Kalamazoo Advice-a-palooza Festival. While her siblings both have proof "up on the fridge" of their accomplishments, poor Edwina has nothing. When a talent scout from the convention visits her hometown of Paw Paw, Michigan, she trots out her musical advice giving shows live from the family garage in hopes of finding her place in the spotlight.

Our second show is *Tied to the Tracks*. *Tied to the Tracks* will leave you tied up in knots... of laughter! This action-packed old time musical western melodrama could be the most tuneful and wildest ever to hit your stage. Join stalwart Sheriff Billy Bold and the delicate Dakota Melody as they resist the evil machinations of Silias Scavenger and Wild Prairie Rose in this shoot-'em-up, round-'em-up extravaganza.

Auditions for these shows will be held **July 10 at 9:00am & July 11 at 2:00pm.** You don't have to be in both shows, but you can. *Dear Edwina* will play the middle of August and *Tied to the Tracks* will play the end of September. More soon!

Dear Edwina Character List:

- ANN VAN BUREN, The Kalamazoo Advice-a-palooza Talent Scout
- ANNIE, Friend and repertory troupe member, Mezzo-Soprano: G flat - G
- BECKY, Edwina's enthusiastic best friend, a cheerleader, Mezzo-Soprano: Low G - E flat
- BILLY, Edwina's friends, part of the VANDERPLOONK triplets, Tenor: G flat - G flat
- BOBBY, Edwina's new friend, recently moved to the neighborhood, Tenor/Baritone: C - C
- CORDELL/LARS, Billy's triplet brothers. (LARS breaks his ankle in the first scene), Tenor: F - F sharp
- EDWINA SPOONAPPLE, 13-year old advice-giver extraordinaire, also director/choreographer/star of the Spoonapple Repertory Theater, Mezzo-Soprano: Low G - E
- KATIE SPOONAPPLE, Edwina's little sister, a math whiz
- KELLI, Edwina's cool and sophisticated ballerina next-door neighbor, who triples as KATIE SPOONAPPLE, Mezzo-Soprano: A - E flat
- SCOTT, Friend, member of repertory troupe, has crush on Edwina, Tenor: A flat - A

Tied to the Tracks Character List:

- DAKOTA MELODY, Adult, "the fairest cornflower in Buffalo Bend", perky, sweet, loves to sing
- SHERIFF BILLY BOLD, Adult, our hero
- PROFESSOR SILIAS SCAVENGER, Adult, the scoundrel
- CHIEF RUNNING WATER, Adult, Native American Indian of questionable heritage, the professor's sidekick
- THEODORA BARRACUDA, Adult, the actress, past her prime
- RUFUS CLANG, Adult, the lawman of the county
- PRAIRIE ROSE, 13-adult, a female Jesse James
- 6-12 TOWNSPEOPLE, 13-adult
- 6-12 TRAVELERS, 13-adult
- 2-4 OUTLAWS, 13-adult

Support Love INC (Love in the Name of Christ) with Summer Concert

Love INC is having a summer celebration and concert featuring music and desserts on Friday, June 25, at 7:00pm at the Centennial Covenant Church (401 W. Mineral, Littleton). The concert, ***Put a Little Love in Your Heart***, features the entertaining sopranos: Elizabeth Stanley, Erynn Shryack, Krishna Sielaff, and Lauren Ross. Stay after the concert and enjoy a silent auction to support persons in need. Tickets are \$10.00 per person prior to June 21 and \$15.00 after that date.

You may use a credit card online at

www.loveinlittleton.org



Summer Choir All are invited!!!

July 17.....	9:00-11:00am retreat
July 18.....	8:45-9:25am rehearsal
	9:30 & 11:00am services
August 8.....	8:45-9:25am rehearsal
	9:30 & 11:00am services

The summer choir departs after the 2nd music ministry for the 11:00am service. All are welcome to sing! The music is fun and exhilarating! Questions, please contact James Ramsey at jim@stlukeshr.com or 303-791-0659 x23.

FINANCIAL UPDATE



Dave Cupp
Director of Finance



Lisé Takayama
Assistant Director
of Finance

Thank You! The first five months of our budget performance is running very close to plan. Thank you for making this happen.

The Planned Giving Team is putting the final touches to our new Memorials and Honors Giving Program.

Within the next few weeks, you will be able to make memorial gifts and honors gifts simply by picking up a special marked Memorials and Honors Giving envelop in the Narthex area and placing it in the offering plate. You will receive recognition for the gift and so will the family of the deceased person you are remembering or the honoree of the gift you are giving to honor someone.

Finance Team Approves Policy For Processing All Collected Funds. The Discipline of the United Methodist Church requires that

all funds collected here at St Luke's be turned over to the Finance Team for counting, recording and disbursing. The United Methodist Women and the United Methodist Men are exempt from this requirement and are permitted to have their own bank account. The new policy provides the following:

1. Each officially recognized program group at St Luke's is authorized to take special collections as needed to fund a duly approved activity or to fund a long term or ongoing activity of the program provided it is a collection within the normal meetings of the group, collection of fees or dues. Otherwise, the group must submit the St Luke's UMC

Fundraising Application and receive approval before engaging in a fund raising activity.

2. All funds collected except those collected by the United Methodist Women or United Methodist Men for any purpose are to be promptly identified and promptly given to the finance department for counting and recording to the credit of the designated program or activity. The finance department will account for the funds within the QuickBooks

Events in May & June

- ✦ **SLY AM (Sunday School) classes** every Sunday in the Youth Room! Graduating 6th graders will join SLY AM beginning June 6. Parents can walk their youth to the youth room and we'll take it from there!
- ✦ **SLY PM Dinner** every regularly scheduled Sunday night at 5:30, \$2. Donations appreciated! Usually we're grilling out or having sandwiches.
- ✦ **June 20 – No SLY PM (Father's Day)** Do something to make your daddy happy :)
- ✦ **June 26 – Sr. High Carwash** St. Luke's parking lot from 10:00am-4:00pm. Donations accepted.
- ✦ **July 4 – No SLY PM (Independence Day)** Go watch some fireworks...
- ✦ **July 11 – Elitch's Day** – Meet in the Fellowship Hall at noon with your admission ticket or your annual pass. We'll spend the afternoon riding the rides at Elitch Gardens. Back to St. Luke's by 7:30
- ✦ **July 30-31 The Relay For Life.** Watch for more details coming about this awesome overnight event to celebrate cancer survivors!

Special Updates

- ✦ **Youth Email Lists** – Looking for weekly info and updates from SLY? Well, you can sign up for an email list and get tons of important information straight to your inbox! Simply go to www.stlukeshr.com, click on the 'Eministry' button at the top of the page, then select 'Email Lists'. Parents should sign up a valid email address for the 'SLY Parents' list and youth should sign up for the 'St. Luke's Youth' List. Make sure we have a good email address for you!
- ✦ **Check out** www.stlukeshr.com/sly for up-to-date info on programs, activities, ministry opportunities and more!



Chris Wilterdink
Director of
Youth Ministry



Susan Johnson
Assistant Director
of Youth Ministry

CHRIS's CORNER

Sounds Like... SLY

A good measure, pressed down, shaken together, running over, will be put into your lap; for the measure you give will be the measure you get back. –Luke 6:38

It sounds like a simple concept, but what we give to the world has a way of coming back to us. If we make time for others, others make time for us. If we give love, we receive love in return. If we are selfish, the world seems selfish in return. If we reach out to support others, we in turn receive support. You may end up hearing this scripture along with some of our mission trips this summer.

As the summer goes on, what you choose to do with your time and energy becomes less and less governed by how people at your school would treat you. It is a really cool chance to look at what you measure out and give to the world, and find out just what the world will give back to you in return. I think you'll find out that you don't have to go far away to serve others and have a mission experience. You just might find others around here who could use your measures of kindness and time. *~Peace & Love, Chris*

Summer Small Groups! On Wednesday nights from 6:00-8:00pm **GEMS** (a girls only group) and **STM** (a guys only group) are back on all summer long! Join us for a great time. Check the youth website for further details.

OUR ROOTS

Monty's Methodism Musings: We are Arminians

At the start of the Protestant Reformation, Martin Luther and John Calvin were two of the major theologians. Both believed that God was involved in all aspects of our lives and that the course of our lives was predetermined by God. Calvin also believed that who was worthy of salvation was predetermined by God. In Europe during this time, you were what you were born to be. If your father was king, you would be king. If your father was the village blacksmith, you would be the blacksmith. The theology fit the social setting.

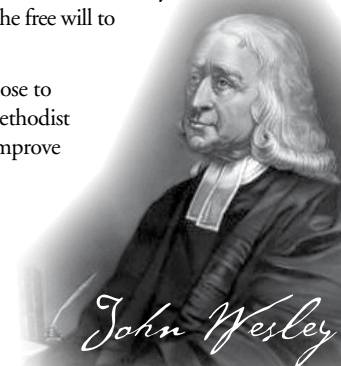
At the start of the Industrial Revolution in Europe, the social setting changed. It became more profitable to raise other agricultural products on the land instead of renting it out to small farmers. People were removed from estates that their families had lived on for hundreds of years. They could either get on a boat to America, or go to work in the factories. They were no longer what they were born to be and the theology didn't fit the social setting.

Jacob Arminius was a Dutchman who lived a century before John Wesley. He believed that Grace was a gift offered to all and that by Faith and Grace we achieved salvation. He also believed that we had the free will to accept the gift of Grace or not. Because of his studies and life experiences, John Wesley adopted Arminius's ideas about free will and the availability of Grace for all.

After his Aldersgate experience, John went to churches and preached that Grace was available to all people. The people in the churches didn't want to hear that their good fortune was not God's will and that the poor and uneducated factory workers were as loved by God as they were. Wesley quickly ran out of invitations to preach in churches and was forced to preach in fields and on street corners. The people who gathered to hear him were exactly the people who needed to hear his message. Wesley told them they were loved by God simply because they were children of God. He told them that it was not God's will that they were living the difficult lives that they had. He told them that they had the free will to choose how they would live their lives, for better or for worse.

The Arminian message resounded with the poor of England. They chose to make a better life for themselves and their families. They joined the Methodist societies that were forming and helped each other to improve and to improve the world that they lived in.

Today, we can also choose how we live our lives, for better or worse. We can choose to make the world a better place for all of God's children. St. Luke's commitment to missions across the street and around the world is a choice that we make because we have the freedom to make the world a better place. We are Arminians. *–Monty Hoffman*



CONGRATULATIONS 2010 GRADUATES!



Carli Auran
Mountain Vista HS
Univ. of CO



Matthew Bacon
Mountain Vista HS
Front Range Com. College



Caitlin Bauer
Mountain Vista HS
CO State Univ.



Christine Birkholz
Thunder Ridge HS
CO School of Mines



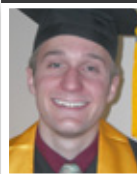
Karen Bobkowski
Cherry Creek HS
Penn. State Univ.



Kayla Boos
Mountain Vista HS
CO State Univ.



Kyle Colman
CO State Univ.



Ben Coryell
Univ. of WY



Katie Drinkard
Thunder Ridge HS
Ithaca College, NY



Jane Givens
Kent Denver HS
Lehigh Univ., PA



Ethan Goddard
Columbine HS
Rensselaer Polytech, NY



Josh Gross
Mountain Vista HS
Red Rocks Com. College



Arianna Hutchinson
Univ. of Denver



Tyler Kirchhoff
Mountain Vista HS
Wake Forest Univ., NC



Blair Larson
Arapahoe HS
CO State Univ.



Chris Latham
Univ. of CO



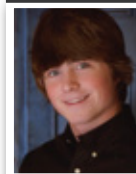
Bill Lee
Denver Academy
Rensselaer Polytech, NY



Jordan Lenhard
Middle Park HS, Granby
CO State Univ.



Landon Marquis
Highlands Ranch HS
Com. College, Denver



Peter Maxwell
Arapahoe HS
Montana State Univ.



Carrie McMullen
Mountain Vista HS
Rocky Mtn. College, MT



Ben Miyaki
Univ. of N. CO



Dayna Newby
CO State Univ.



Lucas Norton
Mountain Vista HS
Metro. State College



Josh Pawley
Highlands Ranch HS
CO State Univ.



Kim Ransick
Mountain Vista HS
Univ. of CO, Colo. Sprgs.



Kristin Speedy
Mountain Vista HS
Univ. of CO, Boulder



Hannah Staller
Arapahoe HS
Williamette Univ., OR



Sarah Staller
Univ. of CO School of Medicine



Lauren Stanley
Pine-Richland HS, PA
Univ. of Pittsburg

OUR FINANCES

cont. from p. 9 Accounting system and manage the funds using the same procedures and guidelines as used for other collected church funds. I.e., funds collected that apply to line items in the general fund budget will be applied to that line item and funds collected from such special activities such as income from the pumpkin patch, income from the holiday shop, fees collected for the hayride, fees collected for ski trips, fees collected for retreats, etc, will be placed in an appropriate class fund by the finance department to be disbursed as needed for the expenses of the purpose for which they were collected.

3. Any disbursements to be made from these collected funds will be done using the normal procedures of disbursing funds as provided in the SLUMC finance Department Policies and Procedures and with the approval of the person responsible for the particular activity.

Choose Your Method of Giving to SLUMC. We have many ways for you to make your giving to SLUMC easy and convenient. Contact Dave or Lisé.



Tamara Thevarajah
Douglas Cnty. HS
Univ. of CO, Denver



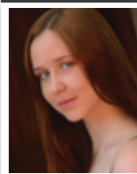
Christi Thompson
Mountain Vista HS
N. Arizona Univ.



Gina Thompson
Mountain Vista HS
Western State College



Sally Van Denover
Arapahoe HS
Elon Univ., NC



Allison Wesson
Rock Canyon HS
Arapahoe Com. College



Troy Whitmer
Mountain Vista HS
Drake Univ., Iowa



Kody Wright
Thunder Ridge HS
Univ. of N. CO



Levi Wright
Thunder Ridge HS
Univ. of N. CO

Class of 2010

Best of luck to you all! And come see us often!



St. Luke's United Methodist Church
8817 S. Broadway • Highlands Ranch, CO 80129
303-791-0659 • www.stlukeshr.com

NON-PROFIT
ORG
**U S POSTAGE
PAID**
PERMIT #7
LITTLETON, CO

*St. Luke's United Methodist Church welcomes you to our Christian family,
where we share life. Wherever you are in your faith journey,
you are accepted and encouraged to grow spiritually.*

*Join us in growing together toward full humanity through living
the teachings of Jesus: Love, Acceptance, Justice and Hope.*

RETURN SERVICE REQUESTED

Colorado Rockies Faith Day - August 15

Want to spend a Sunday afternoon at the ballpark and enjoy a Christian music concert afterwards? Sign up for your Rockies Tickets at the Get Connected table on Sundays from June 6 to July 11. Tickets are located in the lower-level first-base side of Coors Field, and are \$20 each. The game is on August 15 at 1:10pm, with a concert immediately following the game. Questions? Email chris@stlukeshr.com



JUNE/JULY 2010

Sunday	Monday	Tuesday	Wednesday	Thursday	Friday	Saturday
6 8:00, 9:30, 11:00am: Worship - Rev. Janet Forbes 5:30pm: SLY, Jr. Family Cook Out & Games 5:30pm: Dinner (\$2) & SLY PM 6:34pm: Fusion	7 Performing Arts Academy (PAA) Crossroads Youth Choir Concert  PAA 7:00pm: Trustees	8 PAA 6:00pm: Yoga 6:30pm: SLY Volleyball 6:30pm: Finance Team 7:00pm: Missions Team	9 PAA 9:30am: Wacky Wed 6:00pm: SLY GEMS/STM	10 PAA 10:00am: SLY Breakfast Club	11 PAA	12 PAA 7:30am: Men's Breakfast
13 8:00, 9:30, 11:00am: Worship - Rev. Brad Laurvick 9:30am: Café St. Luke's noon: SLY PM - Renaissance Festival 6:34pm: Fusion	14 Performing Arts Academy PAA 7:00pm: Trustees	15 PAA 10:00am: VBS Training noon: SLY Food Bank of the Rockies 6:00pm: Yoga	16 PAA 9:30am: Wacky Wed 6:00pm: SLY GEMS/STM	17 PAA 10:00am: SLY Breakfast Club 6:00pm: PAA Performance	18 PAA 6:00pm: PAA Performance	19 8:00am: VBS Decorating 10:00am: SLY Car Wash 10:00am: Story Tellers and Writer's Workshop
20 Father's Day 8:00, 9:30, 11:00am: Worship - Steve Collins 8:15am: Contemplative Worship Service 6:34pm: Fusion	21  9:15am: Vacation Bible School (VBS)	22 9:15am: VBS 6:00pm: Yoga 6:30pm: SLY Volleyball	23 9:15am: VBS 6:00pm: SLY GEMS/STM	24 9:15am: VBS 10:00am: SLY Breakfast Club	25 9:15am: VBS	26 8:00am: Work Day
27 8:00, 9:30, 11:00am: Worship - Rev. Janet Forbes Jr. High Mission Trip - Alamosa, CO 5:30pm: Dinner (\$2) & SLY PM 6:34pm: Fusion	28 Jr. High Mission Trip 7:00pm: Women's Book Club	29 Jr. High Mission Trip 6:00pm: Yoga	30 Jr. High Mission Trip 9:30am: Wacky Wed	JULY 1 Jr. High Mission Trip 10:00am: SLY Breakfast Club	2 Jr. High Mission Trip	3
4 Independence Day 8:00, 9:30, 11:00am: Worship - LCDR John Miyahara 6:34pm: Fusion	5 Church Office Closed	6 6:00pm: Yoga 6:30pm: SLY Volleyball	7 6:00pm: SLY GEMS/STM	8 5:30pm: VBS Training 10:00am: SLY Breakfast Club	9	10
11 8:00, 9:30, 11:00am: Worship - Rev. Janet Forbes 9:30am: Café St. Luke's noon: SLY PM - Elitches 6:34pm: Fusion	12 7:00pm: Trustees	13 5:45pm: Evening VBS 6:00pm: Yoga 6:30pm: Finance Team 7:00pm: Missions Team	14 9:30am: Wacky Wed 5:45pm: Evening VBS 6:00pm: SLY GEMS/STM	15 10:00am: SLY Breakfast Club 5:45pm: Evening VBS	16  5:45pm: Evening VBS Star Party	17 Summer Choir Retreat 7:30am: Simply Saturday 10:00am: Story Tellers and Writer's Workshop
18 8:00, 9:30, 11:00am: Worship - Rev. Brad Laurvick 8:15am: Contemplative Worship Service Sr. High Mission Trip - Idaho 5:30pm: Dinner (\$2) & SLY PM 6:34pm: Fusion	19 Sr. High Mission Trip	20 Sr. High Mission Trip 6:00pm: Yoga 6:30pm: SLY Volleyball	21 Sr. High Mission Trip 9:30am: Wacky Wed	22 Sr. High Mission Trip Family Camp 10:00am: SLY Breakfast Club	23  Sr. High Mission Trip Family Camp	24
25 8:00, 9:30, 11:00am: Worship - Rev. Janet Forbes Sr. High Mission Trip Family Camp 5:30pm: Dinner (\$2) & SLY PM 6:34pm: Fusion	26 Family Camp 7:00pm: Women's Book Club	27 6:00pm: Yoga	28 9:30am: Wacky Wed 6:00pm: SLY GEMS/STM	29 10:00am: SLY Breakfast Club	30 Relay for Life 	31 Relay for Life