



# The Chronicle

ST. LUKE'S UNITED METHODIST CHURCH

OCTOBER 2010

## Inside This Issue:

A Look at Giving.....	3
Severe Weather Plan.....	5
Children's Ministry.....	6 & 7
Welcome Brenda.....	7
UMW Update.....	8
Music & Drama.....	9
SLY.....	10
Missions.....	10
New Members.....	11

and much more!

## Get Photographed for St. Luke's 2011 Pictorial Directory!



It's time to get photographed for the 2011 St. Luke's Pictorial Directory, and

we would like to have full participation! You'll get a free 5x7 portrait, a complimentary pictorial directory, and the option of purchasing specially priced packages — no hard selling involved.

Bettinger Photography will be on-site at St. Luke's for portrait appointments on Friday, Oct. 15 through Thursday, Oct. 21, 2010. Volunteer appointment setters will be in the Narthex on Sept. 26, Oct. 3 and Oct. 10 to help schedule your portrait sitting. There are just a few weekday time slots left for the October session at the church, but appointments can be made at Bettinger's Studio now through January 8.

The Pictorial Directory team is also requesting volunteer helpers to greet members and sign them in during appointment sittings in October.

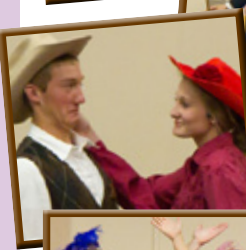
For more info or to help, visit [stlukeshr.com/photodirectory](http://stlukeshr.com/photodirectory) or contact Kris Kinney at 303-346-2740 [kmk830@earthlink.net](mailto:kmk830@earthlink.net) or Jill Wright at 303-927-6345 [jill@jillwright.com](mailto:jill@jillwright.com).



## Fall Festival!!

**Sunday October 24**

Don't miss this St. Luke's tradition! Bouncy castles, face painting, pumpkin decorating, grilled lunches, and more! All activities are available on a donation basis and are open to all ages.



## Tied to the Tracks Left Us Tied in Knots!

"WhooWee! What a hoot!", exclaimed many who left the hilarious production of *Tied to the Tracks* September 24th-26th. Over 400 folks came to laugh, boo, hiss, ahh and ooh all while throwing popcorn and thoroughly enjoying themselves. We were able to raise just over \$2200 which will go to

support the Drama Ministry and UMW Missions. The Wesley Players would like to thank all who came to laugh with us and support these wonderful causes. We would also like to thank the United Methodist Women who served concessions. We look forward to seeing you all at our Christmas show in December.

—Jenna Wilcox



## Creating Tomorrow at St. Luke's



Please come to one of these informal discussions where we will be discussing these

questions and continuing our process of planning for St. Luke's future.

- In thinking about St. Luke's as a whole, what do you see as our strengths?
- What do you see as our weaknesses?
- What is your vision for what St. Luke's will look like, feel like and be doing in five years?
- Are there changes in St. Luke's that would facilitate this vision? If so, what?
- Do you see changes or situations that are or could work against this vision? If so, what?
- If you could identify one Big Hairy Audacious Goal for St. Luke's, what would that be?

Please RSVP for a home meeting by signing up at the table in the Narthex or by calling the Church Office.

**Wednesday, Oct. 6 6:30-8:00pm**  
St. Luke's Sanctuary

**Sunday, Oct. 10 11:00am-12:30pm**  
St. Luke's Fellowship Hall

**Tuesday, Oct. 12 7:00- 8:30pm**  
Elizabeth & Dave Laurvick  
14 Blue Sage, Littleton 80125

**Sunday, Oct. 17 4:00-5:30pm**  
Dawn & Keith Johnson  
9414 Princeton St., Littleton 80130

**Monday, Oct. 18 7:00-8:30pm**  
Lynne & LeRoy Butler  
2667 Bitterroot Pl., HR 80129

**Saturday, Oct. 30 9:30-11:00am**  
Carleen & Richard Krening  
7562 S. Race St., Centennial 80122

**Sunday Worship Services:**

8:00am, 9:30am, 11:00am

6:34pm: Fusion

Contemplative Services also offered.

(Check website for dates and times.)

**Sunday School:**

Adult, Youth &amp; Children:

9:30am &amp; 11:00am

Nursery available for

9:30am &amp; 11:00am services

**Church Office: 303-791-0659**

Fax: 303-470-5615

St. Luke's Youth.....x45

Childcare Reservations.....x47

Email: office@stlukeshr.com

Website: www.stlukeshr.com

**Preschool Office: 303-791-1982****Staff:**

Rev. Janet Forbes.....x13

Senior Minister

Emergency: 303-241-9312

Rev. Brad Laurvick.....x12

Associate Minister

Emergency: 720-296-1251

Rev. Sallie Suby-Long.....x32

Associate Minister

Emergency: 303-475-0141

James Ramsey.....x23

Director of Music &amp; Arts Ministries

Kay Coryell.....x36

Associate Director of Music Ministry

Ken Mervine.....x42

Organist/Accompanist

Josh Carr.....x44

Fusion Worship Leader

Carrie Mallory.....x35

Assistant Fusion Worship Leader

Chris Wilterdink.....x14

Director of Youth Ministry

Susan Johnson.....x19

Assistant Director of Youth Ministry

Joely Maddux.....x11

Co-Director of Children's Ministry

Sharon Oliver.....x27

Co-Director of Children's Ministry

Samantha Leahy.....x40

Director of Childcare

Lynda Fickling.....x20

Director of Servant Ministry/Spiritual Director

Brenda Schafer.....x10

Office Administrator

Dave Cupp.....x24

Director of Finance

Lisé Takayama.....x16

Assistant Director of Finance

Barry Curtis.....x39

Facilities Manager

Kay Swanson.....303-791-1982

Director of Little School

All articles, photos and  
announcements for the  
**November 2010**

issue of *The Chronicle*  
are due **October 20**

Editor: Sharon Oliver  
chronicle@stlukeshr.com

## A MESSAGE FROM OUR SENIOR PASTOR



**Rev. Janet Forbes**  
Senior Pastor

## Be Blessed and Be a Blessing

And God is able to provide you with every blessing in abundance, so that by always having enough of everything, you may share abundantly in every good work. —2 Corinthians 9:8

BE BLESSED AND BE A BLESSING is the theme of our upcoming campaign to encourage us to be faithful in ministries envisioned for 2011. It is more than a

theme – it's an effort to show how our congregation can make a lasting difference in the lives of children, youth, adults, and families.

Stewardship always asks the question: *What do I really care about? In what will I invest my life and my resources?* As we continue in anxious times with so many families still affected by joblessness and tenuous financial realities, I would like for more and more families to enter into the joy of investing in St. Luke's and spiritual formation so that we might be blessed by blessing and supporting others. That's what families do for one another!

Rev. Brad will lead us in a Children's Sabbath service as we kick-off the campaign on October 10. Commitment Sunday is November 7 as we celebrate a Service of Holy Communion.

Our Executive Team is asking each of us to consider disciplined, proportional giving. For those that give a percentage of their income now, take another step to two this year toward the biblical goal of the tithe or 10% of the household income for God's work.

Stewardship is not about money, it's about what we do with our money. Rev. Brad, Dr. Steve, our Iliff Intern, and I will be sharing what God has to say about the vital role of stewardship in our personal lives.

Author Rich Cunningham has described the four purposes of giving.

### Give to honor God.

*Each of you must give as you have made up your mind, not reluctantly or under compulsion, for God loves a cheerful giver. —2 Corinthians 9:7*

### Give to serve the needs of others.

*A new commandment I give to you, that you love one another, as I have loved you. —Matthew 35:40*

### Give so that you may deepen your spiritual journey.

*Think of us in this way, as servants of Christ and stewards of God's mysteries. —1 Corinthians 4:1*

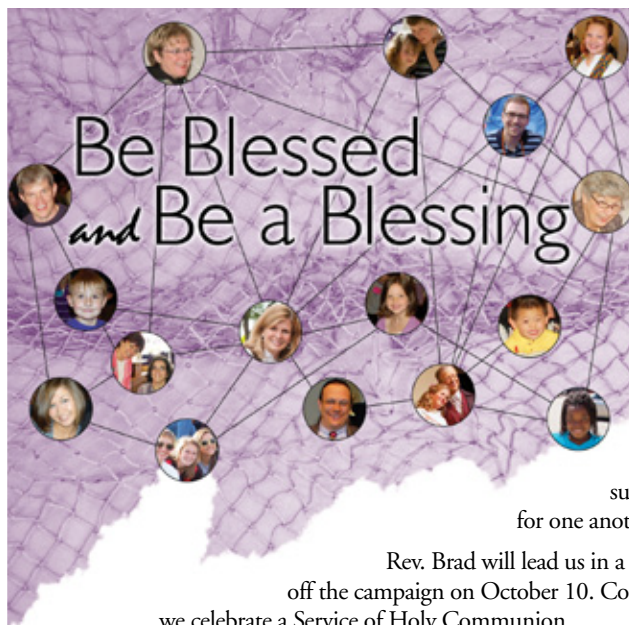
### Give out of gratitude to support the leadership, life, ministry, and mission of St. Luke's.

*Remember the Lord your God for it is the Lord who is giving you power to make wealth that God may confirm a covenant. —Deuteronomy 8:18*

Our giving and our sharing of our money is a deeply spiritual, devotional act. Giving is a spiritual exercise, a spiritual discipline just like prayer is a spiritual discipline. Prayer is not something optional if we have decided to follow Jesus' teachings. It comes with the job description. Serving other people is not something optional. It is one of the spiritual practices. Worshipping God is not something we vote on. It is one of the spiritual practices. It is the same with giving. It is an act of devotion. It is a spiritual discipline for all Christians just like praying or serving or worshipping. And that is why we call the act of bringing a portion or our resources forward to dedicate to God's work an offering, instead of a collection. It is an offering of our lives and ourselves and our treasure. The money symbolizes our lives and our work. It is a very spiritual thing. We are not balancing the budget here in this act, we're balancing our lives.

We continue in anxious, uncertain times. At St. Luke's, we are called hold one another in prayer and substance as many of our families struggle with unemployment. These times require much faithfulness, deeper relationships, and vigilant hope!

What a joy to serve with you! —Rev. Janet







**Rev. Brad Laurvick**  
Associate Minister

## Turn Turn Turn

About a week ago, Rev. Janet walked into one of our meetings and brought a little bit of nature with her. On the table, she laid down a pile of leaves. These weren't just any leaves, they were Aspen leaves. And they weren't just any Aspen leaves, they were from higher elevation, and they were golden. Now I love fall, in fact it is my favorite season... but this just freaked me out.

On my walk with the dog this morning I noticed a lot of

the trees in our neighbor hood are turning and the sidewalk was filled with leaves. The air was brisk. There is no denying it, it is fall. And as much as I have been waiting for fall, I just need a couple more weeks... I'm not ready.

See, fall as an outdoor season brings so many things I love, but fall as a time of my work year means completely different things... things that require copious amounts of work. I feel behind, I feel overwhelmed, I feel... well, like lots of us do in our own "seasons". It's not like I am the only one who gets busy. It's not like I am the only one who wishes he could add an extra week into the calendar at his own choosing.

I think of that great line (from the Bible or the Byrds, your choice) "to everything there is a season" and the implicit message it carries that we don't get to define certain aspects of life, somethings just change around us. For some those changes bring work, for others nothing, for some joy, for others loss, for some comfort, for others conflict. Sometimes these things get brought into our lives and set in the table in front of us. And no matter what our feelings about them we can't change the turning.

I wonder what things are "turning" for you right now. Is there something you have been waiting for that has finally arrived? Is there something you have been avoiding that has finally come? Whatever the happening, whatever the feeling, I hope you will ask a very important question – "How can my church family help me through this or share this with me?" Whether good or bad, whether monumental or seemingly insignificant, we are here to be a part of your life in every season. Please let us know the many happenings of life, even if just to keep us in the loop. Because there are always seasons sneaking up on us.

The **young adults** of St. Luke's are in the process of planning another **mission trip**, possibly international, for Summer of 2011! If you would like information or to help in the planning stages, please contact Kayla Boos at [kayla.boos@hotmail.com](mailto:kayla.boos@hotmail.com) or at 303-524-4306.

## Learning Some Old Concepts for a New Day

*"You shall go there, bringing... your tithes and your donations, your votive gifts, your freewill offering..." – Deuteronomy 12:5-6*

As we are blessed and called to be a blessing to others, the pastoral team is often asked about the origin of the biblical phrase "tithes and offerings".

The TITHE represents 10% of the bounty with which God blesses us. It is also the symbol that Paul uses when he writes to the young churches of the first century. He calls for "proportional giving". We are to give in proportion to what we have earned, in proportion to what we have accumulated, in proportion to what we possess. We are to give in proportion to how we have prospered under the grace of God. So, "tithing" is a symbol for planned giving. Tithing helps us give significantly in a systematic way. It is a planned share in the purposes of God. Tithing reminds us that we are all stewards and not owners. A tithe is a guide toward responsible, healthy, significant faith-promise giving.

A TITHE represents what you plan to give to the ministry and mission of the church. It is your plan – freely decided upon. It is promised out of your financial means, and cheerfully given. The tithe is the amount we bring weekly or monthly as an act of worship.

Next we are enjoined to bring our OFFERINGS. The Bible knows at least two kinds of offerings which have connection with our lives today. First, there are the "votive offerings". Votive offerings are part of a vow or promise, or they represent a specific act of thanksgiving to God, or a personal act of devotion. Seasonal offerings, missional giving, bequests, and memorials are in the category of votive offerings.

The biblical witness also speaks of "freewill offerings." It is an unplanned, unstructured, unexpected out-of-pocket offering on the spur of the moment. The freewill offering is giving out of a sudden impulse of love, out of a felt need. It is the envelope in your worship bulletin when you arrive on a Sunday morning that invites a response for a special cause. It is the call for a special disaster relief offering due to flood, or hurricane. It is the spontaneous gift to the pastor's relief fund for homeless persons. It is the purchase of a breakfast burrito to support a Guatemala Mission Team or our Boy Scout Troop.

Bring your tithes and your votive offerings and your freewill offerings to the house of worship. The text is an amazing ancient writing with a high level of contemporary relevance. It all adds up to a single central truth: As we give of any monetary amount, we are primarily receivers and transmitters of the love of God in the world. Ultimately, that's what any giving is all about.

## NEW WORSHIP SERVICES

### St. Luke's 2010-2011 Contemplative Services Spirituality of the Seasons

With the change of each season, we are invited into the miracles of nature and to the hope and healing that God offers us in the seasons of our own lives. We welcome you to come and experience God's abiding grace. The Contemplative Services will be held in the Chapel on these Sunday mornings from 8:15-9:00am.

**Autumn – October 17**

**Spring – April 10**

**Winter – January 16**

**Summer – June 12**

**Evening Prayers with Communion**  
Wednesdays from 5:45-6:30pm in the Chapel  
Beginning Wednesday, September 22 the Chapel will be open for evening prayers, music, and to receive holy communion. Everyone is welcomed.



**Lynda Fickling**  
Director of  
Servant Ministry/  
Spiritual Director

## We are Called to Serve

We invite you to stop at our Get Connected Center to discover more about our programs and ministries

**Usher Team:** Assist in the weekly Sunday services and special events. Ushers typically serve on a quarterly basis. If you would enjoy serving our community on Sundays, please contact Shawn Slade 303-660-6113 shawn.slade@leicaus.com

**Soundbooth/Media Team:** This team is responsible for the sound system you hear during Sunday services and also help with various events at St. Luke's. This behind-the-scene team works at preparing slides, videos and working closely with the Worship Planning Team. Contact Tim Boles 303-791-9643 tmboles@aol.com

**Grocery Certificate Team:** Help sell our grocery certificates from King Soopers, Albertson's, Safeway and Tony's on Sunday mornings. It is a wonderful way to meet others here at the church. Contact: Paula Severseike 720-519-1194 seikes@comcast.net or Marilyn Bacon 303-791-7649 jamesnmarilyn@msn.com

**Communications & Outreach Team:** Do you enjoy writing? We are seeking individuals to help writing articles for our chronicle and local newspapers. If you enjoy creating and like to work at home, this is for you! Contact: Amy Ash 303-799-6079 aash71170@aol.com

**Warren Village:** 1323 Gillian St., Denver www.warrenvillage.org. A residential facility that helps low-income families achieve economic self-sufficiency. Volunteers are often needed. Our youth host a Halloween Party for the children! 303-321-2345

**Love INC:** Love in the Name of Christ is a network of churches that links church ministries and volunteers to our neighbors in need. Volunteers are needed for different times and areas. Contact: Rev. Doug McKinney 303-732-5925 doug@loveinlittleton.org

***"All Followers of Jesus are called to ministry. That's the whole concept of the Christian church: we are the body of Christ."*** —Henri Nouwen

To Discover more about your own Spiritual Gifts and where you may serve best, visit [stlukeshr.com/p\\_volunteer.asp](http://stlukeshr.com/p_volunteer.asp) and beginning serving where God has given you talents and gifts!

If you are searching for a place to connect at St. Luke's, please contact Lynda Fickling, Director of Servant Ministry 303-791-0659 x20 [lynda@stlukeshr.com](mailto:lynda@stlukeshr.com) or Karin Wesson, Team Leader for Lay Leadership, 303-683-0196 [karin@thewessons.com](mailto:karin@thewessons.com)



*As of September 25, 2010*

Please stop by the Information Center, by the front door, where you will find the updated Prayer Concerns List (on yellow paper) and the Armed Forces Prayer List (on blue paper). Look it over and Rev. Sallie Suby-Long know if you have any additions/removals from either list. 303-791-0659 x32, leave a note on the front desk, or email at [sallie@stlukeshr.com](mailto:sallie@stlukeshr.com)

- |  |   |
|--|---|
| <i>Paula Strader (Sandi Miyaki's sister)</i>     | <i>Nelson family</i>  |
| <i>Lori Lieberman</i>                            | <i>Erika Waldheim (friend of Peter &amp; Alicia Waldheim)</i>     |
| <i>(friend of Jane Damsgard)</i>                 | <i>Dustin Baird (friend of Lucero's)</i>                          |
| <i>Schelly Thompson</i>                          | <i>Michael Van Baal (Lucero's Kindergarten teacher's brother)</i> |
| <i>(Sandy Thompson's sister-in-law)</i>          | <i>Valerie Block (Terry &amp; Janet Walter's daughter)</i>        |
| <i>Mark Bartellina (Mike Hutchin's cousin)</i>   | <i>Jan Cook (Amy Curtis' mother)</i>                              |
| <i>David Joseph</i>                              | <i>Frank James (Kathy Swier's uncle)</i>                          |
| <i>(friend of Bobbi King/Marie Blue)</i>         | <i>Betty Kieser (Bonnie Funk's mother)</i>                        |
| <i>Daniel Winkle (friend of Gail Strawn)</i>     | <i>Sara Wright</i>  |
| <i>Darrell &amp; Billie (wife) Aderman</i>       | <i>(Kathy Swier's friend's daughter)</i>                          |
| <i>(friends of Rick &amp; Louise Jasper)</i>     | <i>Carol Barns (friend of Val Goodstein)</i>                      |
| <i>Ross Magaughey</i>                            | <i>Sandy Murray's parents</i>                                     |
| <i>(friend of Rick &amp; Louise Jasper)</i>      | <i>Bill Havens (Walt Havens' brother)</i>                         |
| <i>Jerry Miyaki (Mike's uncle)</i>               | <i>Jennifer Havens</i>  |
| <i>Rosie Shaw (friend of Eric Ransick)</i>       | <i>Brayden Fuller</i>   |
| <i>Lolitha Fernandes</i>                         | <i>(Janet &amp; Wally Sackett's grandson)</i>                     |
| <i>(friend of Joely Maddux)</i>                  | <i>Roberta Towell (Jon Streaty's sister)</i>                      |
| <i>Zach Bingham</i>                              | <i>Bob McCorkle</i>   |
| <i>(3 mo. nephew of Ashlee Favilene)</i>         | <i>(family friend of Kay Oscai)</i>                               |
| <i>Bill Harold (Nancy Obertier's cousin)</i>     | <i>Mandy Paul</i>   |
| <i>Donna Craven (friend of Cindy Barlow's)</i>   | <i>(family friend of Kay Swanson)</i>                             |
| <i>Maria Viera Harris</i>                        | <i>Scot Trosper (Norm Veach's nephew)</i>                         |
| <i>(friend of Cindy Barlow's)</i>                | <i>Gail Strawn</i>  |
| <i>Mary Hogan (friend of Sharon Scholle's)</i>   | <i>Shirley Quail (friend of Kay Swanson)</i>                      |
| <i>Norma Whitaker's mother, Jane</i>             | <i>Natalie Murrow</i>   |
| <i>Denise More (friend of Jenny Stevenson)</i>   | <i>Ed Murrow (Dave Murrow's Dad)</i>                              |
| <i>Emily Geraghty (3yr old- Little School)</i>   | <i>Todd Smith (Lori Smith's husband)</i>                          |
| <i>Thelma Noah (friend of Rachel Nolder's)</i>   | <i>Jeff Lee</i>   |
| <i>Joan Dixon (friend of Eileen Law)</i>         | <i>Norma Harris</i>   |
| <i>Keaton Wong (friend of the Takayama's)</i>    |   |
| <i>Chris Kellams (friend of Joely Maddux)</i>    | <b>ARMED FORCES:</b>  |
| <i>Jack Fleming (Julie Brower's father)</i>      | <i>Mark Thompson, Ed Herring,</i>                                 |
| <i>Richard Swier (Dan Swier's father)</i>        | <i>Josh Brady, Jeremy Brady,</i>                                  |
| <i>Brenda Zachek (friend of Kathy Swier's)</i>   | <i>Colin Gabriel, Dustin Ellington,</i>                           |
| <i>Dean Mathena (Rick Jasper's friend)</i>       | <i>Justin Boggy, Lt. Jeff Hamer,</i>                              |
| <i>Terry Bohn (friend of Lisé Takayama,</i>      | <i>and Christopher Gardner.</i>                                   |
| <i>Kam Boles, &amp; Joely Maddux)</i>            |   |
| <i>Helen Mueller</i>                             | <b>SYMPATHIES:</b>  |
| <i>(Cindy Markham's mother)</i>                  | <i>To Pam Richard on the passing of her</i>                       |
| <i>Bertha Roth</i>                               | <i>father, Robert Miller</i>                                      |
| <i>Annie Schoenhals (friend of the</i>           | <i>To Richard Hage on the passing of his</i>                      |
| <i>Muscianisi family)</i>                        | <i>wife, Michelle</i>   |
| <i>Jan Rufien</i>                                | <i>To David &amp; Bonnie Funk on the</i>                          |
| <i>Susan Robertson (sister of Janet Sackett)</i> | <i>passing of David's father, Bill Funk</i>                       |
| <i>Brianna Bennett</i>                           | <i>To Diana Roppola on the passing of her</i>                     |
| <i>(Lynette McKinney's cousin)</i>               | <i>mother, Bruna</i>  |
| <i>Jason Ritter</i>                              | <i>To Brian &amp; Elizabeth Bauer on the</i>                      |
| <i>(Ryan Hooke's teacher/coach)</i>              | <i>passing of Brian's aunt, Jean Noll</i>                         |
| <i>Sonia Cajanda</i>                             |   |
| <i>(Mercedes VonNormann's sister)</i>            | <b>NEW BABY</b>   |
| <i>Mary Durston (Diana Starnes' mother)</i>      | <b>CONGRATULATIONS:</b>   |
| <i>Brian Rovetta</i>                             | <i>Celeste Nicole Pesce, born Sept. 2 to</i>                      |
| <i>Jim Eckberg (Kris Reif's brother)</i>         | <i>Matt &amp; Nicole Pesce</i>                                    |
| <i>Bucky Thompson</i>                            | <i>Jordan Michael Riggle, born Sept. 7</i>                        |
| <i>(friend of the Cepull family)</i>             | <i>proud grandparents Mike &amp; Gwen</i>                         |
| <i>Linda Ready</i>                               | <i>Riggle</i>   |
| <i>Ralph Cordonnier</i>                          |   |
| <i>Cherie Hill</i>                               |   |



**Rev. Les Ludlam**  
St. Luke's Lay  
Associate Pastor  
1993-1997

## More from Les: "Me First" or "You Go First?"

As a youngster, I quickly learned that there were two basic types of situations a kid might find himself at any particular time. First there were the "me-first!" situations. And then there were the "you-go-first" situations.

In the first, situation, you scream "me first" because you want the best selection, the biggest piece, the prettiest crayons and because you want to be the focus of attention, center-stage, the envy of all who have to wait a turn. Winning the "me-first" competition makes you feel special, helps you feel, if only for just a moment, like the most important person in the world. However, there are certain situations where you definitely don't want to be first. There is an unknown element, there's some risk involved, you may not have control and the outcome may not necessarily be desirable. I call these the "you-go-first" situations.

Halloween was approaching and Mesa County District of the Boy Scouts of America had planned a "Haunted House of Horrors" to raise some money for new camping equipment for the following summer. There had been advertisements in the newspaper and on the radio and the talk around school that this was going to be the best haunted house ever!

I was eleven years old and a neophyte Tenderfoot Scout and anxious to demonstrate to my friends that I was as brave and loyal as any Boy Scout could be. When our Scoutmaster asked if we wanted to try out the new haunted house, I quickly responded. "Oh, Yes! It'll be great! I'd like to go!" Inside, though, I was a little scared.

And so when our Patrol went down to the Haunted House that Friday night, I rode along with some of the older boys. The Haunted House had been set up in an empty warehouse not far from the school. As we walked toward the entrance, I could hear blood-curdling screams. There were crashing sounds and moans and whistling winds and evil sounding cackling laughter. It was enough to strike fear into the heart of any eleven-year old!

Then I saw a couple of older girls standing near the exit of the maze. One was crying intensely, the other had an ashen look on her face. I felt chills down my spine. "Do I really want to put myself through all this," I thought. But it was too late to back out. My pride was at stake!

"Come on, it'll be fun!" said J.R., a First Class Scout working on his Star Rank, about three years older than me. I wasn't so sure. I wished that someone would tell me what to expect. I looked for an excuse to get away.

"Scuse me, I need to go to the boys' room," I stammered. "Sure, but hurry up, we'll wait for you." But, I could only stall so much; so, then escorted by my fellow scouts, I walked into the unknown horrors that lay ahead.

Something large whirled past my head and a cold breeze blew on my neck! I jumped back and someone pushed me forward. I was just beginning to adjust to the darkness when a hideous face confronted me and screamed. My heart must surely have stopped for a moment. I was terrified!

The winding pathway in the warehouse seemed to take forever and each turn brought some new horror. I wanted to close my eyes, but needed to watch where I was going so I just stared at the floor.

Finally, after about 10 minutes (or a lifetime!) my fellow scouts and I were able to find our way out. For me, the light at the exit was one of the most welcome sights that whole year! I was still shaking as I tried to regain my composure once we got outside. Then I saw Danny, the younger brother of my friend, J.R., running up to us. Danny was too young for the haunted house, according to his parents. "Was it really scary?" asked Danny excitedly, "Did they hurt you?"

Suddenly my shakiness was gone. I proudly threw back my shoulders and smiled, "Nah, no big deal!" But, in my heart, I knew better. But I still wished that someone else of my own age had gone in before me.

We say "you go first" because we don't want to take a risk of looking foolish, suffer pain, or show our fear, as we approach some unknown situation. And when we succeed in getting someone else to "go first," we can watch his or her reactions and then mentally and physically prepare ourselves when our turn eventually comes.

Even though sometimes there is really nothing to be gained by letting someone else "go first," we somehow feel safer just knowing that someone else has already gone through it and survived.

Jesus went first along the treacherous path of a life of commitment to God with nothing more than trust in God; he went first, having faith that God would bring good out of whatever happened. He walked among us as a man, and has already traveled the paths of betrayal, has felt physical pain, has cried out in frustration with those who just don't understand, has experienced betrayal, has faced temptation to put his own desires and needs first, and has been a source for healing, even when he was hurting himself.

And by Jesus' going first, he has shown us with his own human body and life, that there is nothing in our lives that can defeat us as we follow Him.

He has shown us "the way." *God bless us all! Rev. Les*

## Early Planning for Severe Weather

In the event of inclement weather, the pastors and staff of St. Luke's have adopted these procedures:

### During the week:

- When North Douglas County cancels school, St. Luke's will close the church office and cancel daytime classes, meetings, and events in the building. All childcare for the day will be cancelled.
- Group leaders will determine by 3:00pm if evening classes, meetings, and events will be held beginning at 6:00pm. There will be no childcare provided.
- When North Douglas County schools announce an early dismissal, St. Luke's will close the office at 12:00 noon and cancel all afternoon and evening classes, meetings, and events.
- When North Douglas County delays the start of the school day, the morning classes, meetings, and events will be cancelled. The church office will open at 12:00 noon. and the afternoon and evening classes, meetings, and events will continue, weather permitting.

### On weekends and holidays:

- The church staff and group leaders will determine whether classes, meetings, and events will be held.



These closures will be posted on the St. Luke's website [www.stlukeshr.com](http://www.stlukeshr.com) as soon as a decision is made. The closure of the St. Luke's Little School will also be given to local television and radio stations.





## The Bongo Beat!

Woof! Woof! Hello, it's me Bongo, your Sunday School Lhasa Apso! I was just in Miss Sharon and Miss Joely's office the other day looking for treats. I am sad to say I did not find any good Bongo treats that day (they must all be in Miss Lynda's office.) But while I was

snooping around I came across this year's Sunday School curriculum for our **PEAK rotation workshops**! PEAK is our 9:30am Sunday School program for children in Kindergarten-grade 4. Hey, did you know that each Sunday there is a Cooking workshop? And where there's cooking there is food!!!! I might have to go to Sunday School every Sunday!

But what was more interesting than the food (I know hard to believe) were the stories! PEAK workshop mirrors out church calendar. **The children learn stories of the Old Testament, Stewardship, Advent, Epiphany and learning of New Testament stories, Lent, Easter and Pentecost!**

This year the PEAK children began learning of **Sarah and Abraham** and the great faith they displayed by listening to God's call. During **Stewardship** the children will explore and discover how they can put to use their time, talent and treasures to help God's world. At Advent, PEAK will navigate around the world learning different **Christmas traditions**! The extra long Epiphany season (the time between Christmas and Lent) will give us the opportunity to get to know characters in the Bible through their **Occupations**, followed by a rotation of the **Parables**! During Lent PEAK will find themselves alongside Jesus in the **Garden of Gethsemane**, and between Easter and Pentecost the children will learn about **People who make a Difference** from the Bible to our world today!

Wow, this year looks like it will be a lot of fun for our elementary kids. And don't forget also at 9:30am we have our **Preschool Sunday School program-Joy Trek**, and **Tweens R.O.C.K.** for our 5th and 6th graders! At 11:00am you can always find us in the chapel as children age 4 yrs.-Grade 6 engage in **Godly Play**.

Until next month may your nose be a sniffin' and your tail a waggin'! Love, Bongo



**Joely Maddux**  
Co-Director of  
Children's Ministry



**Sharon Oliver**  
Co-Director of  
Children's Ministry



**Samantha Leahy**  
Director of Childcare

**St. Luke's Kids**  
Growing with God



## Blessing of the Animals Sept. 12

### News & Notes:

**Serve in Sunday School:** If you would like to serve our children in Sunday School, we can use you! Contact Joely or Sharon and we'll find the right fit for you.

**Thank You!** A big thank you to all of our Children's Ministry servants. You show up when needed with smiles and energy and love and we are so grateful. We couldn't provide the breadth and depth of programming without you. You make St. Luke's a very special place for kids.

**Mark Your Calendars** This year our Children's Christmas Pageant will take place on Dec. 12 at 3:00pm. ALL children are welcome to take part!

**If you have any questions** about Children's Ministry programs contact Joely Maddux x11 joely@stlukeshr.com or Sharon Oliver x27 sharon@stlukeshr.com.

## Be Blessed and Be a Blessing!

Throughout all of our Children's Ministry programs we are exploring what it means to be blessed and be a blessing to others. On Sunday mornings during PEAK Sunday School we are even learning a beautiful song based on that theme written by our own Dr. James Ramsey and his wife Leigh. A big thank you to the Ramseys!!!

*"Be blessed and be a blessing, Jesus asks me every day.  
Be blessed and be a blessing, And I'll follow in His way.  
Be blessed and be a blessing, My heart sings when I say,  
Be blessed and be a blessing every day."*

One way we can be a blessing to others is to be involved in mission work so for the month of October, Children's Sunday School is collecting diapers and unscented baby wipes for Love INC. Please contribute to our **Dipes & Wipes** drive by bringing items any Sunday morning to the collection bin by our stork display downstairs in Goliath. Love INC distributes the diapers and wipes to families in need right in our own community.



## Upcoming Events Calendar:

- Sundays Sept. 12-Oct. 10** - "Abraham & Sarah" rotation in PEAK Sunday School
- Tuesday Oct. 5** - Love & Logic Parenting Classes 6:00pm (4 Tuesdays - Oct. 5, 12, 19, 26)
- Sunday October 10** - Third Grade Bibles 9:30am & 11:00am Services
- Sunday October 10** - Family Hayride 4:00pm
- Sundays Oct. 17-Nov. 14** - PEAK Sunday School 5-week rotation: "Money & Time" 9:30am
- Tuesday October 19** - Children's Ministry Team Meeting 6:30pm - All are welcome to help us plan and vision
- Sunday, October 24** - SLY, Jr. 5:30pm Dinner (\$2) Movie Night with SLY



**SLY, Jr. has it's own web page!** Check out SLY, Jr. information at [www.stlukeshr.com/children/cmSLYjr.asp](http://www.stlukeshr.com/children/cmSLYjr.asp). Our next get together will be Oct. 24 to join SLY for Movie Night! Then on November 7, we'll get to watch a master pumpkin carver demonstrate his skills and teach us some tricks!



**Kay Swanson**  
Director of  
Little School

## Little School News: Friends for Fall

Little School is off to an amazing start with a fabulous group of children and families. We love the noise and joy that permeates the hallways and cherish the abounding HUGS! If you ever need a "kid fix" you are welcome to visit!



October will be a very busy month with the arrival of the Pumpkin Patch! We love talking about the changing

seasons, learning about preparing for winter for ourselves as well as all of God's Creatures! Rev. Brad will join us in Chapel to talk about "The Sower" and how we plant seeds and nurture them, much like we nurture our new friendships. All of the Children are continuing to learn about how they can "SHINE" for Jesus! We also look forward to our Harvest Parties and our costume parade - we love to see all the superheros and princesses!

Several of our teachers and Ms. Kay are going back to college! We are picking up additional classes that the State of CO now requires. We ask that you keep all of us in your prayers as we return to school to be ever more prepared to teach your children!

We wish you all pleasant fall days and memories of a lifetime with your children!

Blessings,

—Ms. Kay and Staff:—)

**Little School will again this year be collecting left over Halloween candy for the Colorado AIDS Project. Please save your candy and bring it to church. Deposit boxes will be available.**



## Brenda Schafer Joins Staff Team

Brenda Schafer joins our staff team as the new Office Administrator, following Bonnie Funk who resigned at the end of May to re-locate to New Mexico.

Brenda brings strong people skills and will enhance the public face of our church. She has excellent skills in computer and Web technologies and will be an excellent partner as we enhance our communication avenues. She calls herself a "multi-tasker" and will manage the myriad responsibilities of this administrative post keeping both the

internal and external relationships and resources connected.

Interest in the position at St. Luke's grew as Brenda began to discern a shift in vocation toward ministry. She plans to seek further education in religious studies and will eventually attend seminary in order to pursue ordained ministry, specializing in pastoral care and counseling. This position at St. Luke's gives her the freedom to begin pursuing evening classes.

Brenda has a degree in business administration and accounting and has worked as a consultant and manager in the IT financial industry (Oracle) in the United States, Canada, and Europe. She serves as a lay leader and class facilitator at St. Luke's. She is in training to become a Stephen Minister.

We welcome Brenda Schafer to the staff of St. Luke's!

**NEW Class: Monday Morning Methodists!** Join our new once-a-month discussion group. Very simple with no homework...watch a short video and discuss. A great way to engage in community at St. Luke's for those who aren't able to commit to a weekly class or for those already taking a class and want to add another opportunity to connect and learn. We'll meet on the second Mondays from 9:30-11:30am beginning Nov. 8. Open to anyone wanting to join. Contact Lynne Butler to register or for questions. LLbutler1@msn.com 303-470-9083.

## Getting to know a new church is often overwhelming and simply... not simple!

We offer to you, **3 simple ways** to discover more about our community and how you may get connected easily.

Please join us at one or all three of the following sessions in order of your needs or preferences. We will be offering these monthly, so the choice is yours! For more information, stop by our Get Connected Center located in our large foyer. Questions? Contact Lynda Fickling 303-791-0659 x20 Lynda@stlukeshr.com \*childcare and/or Sunday school is available

### Three Simple Ways: 9:30am Sundays Room 206

- 1. 2nd Sunday of the Month:** Café St. Luke's *Fellowship, coffee and conversation covering the History of St. Luke's, how to find the answers to all of your questions about our community and a tour of the facilities.*
- 2. 3rd Sunday of the Month:** Connecting to St. Luke's *Discover our programs and ministries. How do you volunteer to serve and where can I serve inside and outside of the St. Luke's community? What are my Spiritual Gifts and why do they matter?*
- 3. 4th Sunday of the Month:** My Spiritual Growth *How does one continue their journey of faith as an adult? Together we will explore the answer to this question and introduce you to some of our classes.*

## COMMON TABLE

Save the date:

**Monday, November 15** will be the next meeting of the Common Table - an opportunity to connect with others at St. Luke's for discussion and fellowship as we explore what it means to be part of this vibrant community! Potluck dinner at 6:00pm, discussion and meeting from 6:30-8:00pm. Everyone is welcome; come and be curious with us!





*supportive fellowship; and to expand concepts of mission through participation in the global ministries of the church."*

**Who is a member of St. Luke's UMW?** Any woman can be a member of UMW. You can participate in a subgroup of UMW or in one of our four annual events. You do not need to be a member of the Mission Team or make an annual pledge to be a member. Please join us as our membership continues to grow at St. Luke's. For more information, visit the Get Connected Table or contact Elena Lynch at elenaclynch@gmail.com.



### UMW Fall Event: "Bringing New Life to Old Things"

September 19 launched the Fall Season for UMW. The mission program for the day was arranged by

Elena Lynch and presented by The Women's Crisis and Family Outreach Center (TWCFO). With the theme of "Making Old Things New" we collected a wonderful amount of clothing and accessories to be used by women in need for interviews or court dates. Thanks to everyone who donated. There are many ways to help the center. The information can be obtained on their website at [www.twcfoc.org/](http://www.twcfoc.org/). The Center is looking for auction items for the Gala coming up. This is a way to do a one-time donation and help the center.

**Mile High Pikes Peak District Meeting** St. Luke's UMW hosted the District UMW meeting on September 18. Installation of new district officers was on the morning agenda. In the afternoon, women who attended the national Assembly in St. Louis shared their very moving experiences. St. Luke's earned several recognitions for this past year. We earned a Bronze level certificate for our Mission Today criteria; this represents our level of mission activity. This is a step up from last year's level for St. Luke's. We were also awarded the 6-star certificate for supporting five channels of Mission Giving and increasing our pledge to district over last year's pledge. Six stars is the highest level of achievement and is a great honor since we had not earned any recognition in the past. Thanks to all the women in St. Luke's who helped this District Meeting to be such a success. **Mark your calendar: Oct. 22-23 Rocky Mountain Conference UMW Annual Meeting © Littleton UMC**



**Candlelight Dinner** Our next event is the Candlelight Dinner on December 7th. We are looking for help in formulating our plans. Please call Betty Ludlam, 720-951-1171 or attend the meeting on October 10 at noon following the church service in the Conference Room.

**Subgroups of UMW at St. Luke's UMC:** Remember to check out the Interest Groups and find your spot to help us fulfill the PURPOSE of United Methodist Women.

*"The organized unit of United Methodist Women shall be a community of women whose purpose is to know God and to experience freedom as whole persons through Jesus Christ; to develop a creative*

**Simply Saturday:** In September, the Simply Saturday Ladies enjoyed a beautiful "end of summer" day at Hudson Gardens. The dahlias were awesome some as large as our heads! Join us the first Saturday of the month, 8:30-10:30am.



Nov. 6—Day's activities are to be determined. All women ages 18 and older are invited to join us in mission work, time for faith,

devotions and building relationships. For more information, please contact Elena Lynch at [elenaclynch@gmail.com](mailto:elenaclynch@gmail.com) or Lynda Fickling at [Lynda@stlukeshr.com](mailto:Lynda@stlukeshr.com). Visit [stlukeshr.com](http://stlukeshr.com) Quick links, Email lists to add your name to the email distribution 'list.

**Women's Night In:** Fourth Monday of the month, 6:00pm Fellowship Hall. October 25—"Comfort Food", November 22—"Breakfast for Dinner" For more information, please contact Dawn Johnson at [drjohnson636@gmail.com](mailto:drjohnson636@gmail.com).

**Evening Book Group:** Fourth Monday of the month, 7:00pm Conference Room. October 25- *The Lemon Tree* by Sandy Tolan For more information, please call Renae Parra at 303-683-0872. To be added to the email list, send a request to [RenaeParra@aol.com](mailto:RenaeParra@aol.com)

**Itch to Stitch:** Third Wednesdays of the month, 7:00-8:30pm downstairs near the Children's Library. For more information, please call Fran West at 303-797-7107.

**Women's Night Out:** First Monday of the month, 6:30pm various locations, Oct. 4 – Los Dos Potrillos (8252 Holly), Nov. 1 – Pasquini's (7431 Park Meadow Drive). For more information, please contact Sandy Frasier at [Sandy.Frasier@yahoo.com](mailto:Sandy.Frasier@yahoo.com) or Elaine Carlstrom at [ecarlstrom@comcast.net](mailto:ecarlstrom@comcast.net).

## CARE MINISTRY

### Grief Support Group

Holidays lived in the absence of someone dear can be very difficult times. Customary routines are adjusted, some never to be repeated in quite the same way. Easy-going laughter, once so natural, may become awkward or even altogether missing. Gift-giving, once filled with fun, may seem empty and sad.

Significant loss, whether through death, divorce, or estrangement, brings about many changes in life and how we go about functioning during the holiday season. People who are grieving have many questions: How can I make it through all the events of the holidays while missing so desperately the one I love? Would I be better off to ignore the holidays this year? Should I act as if everything were normal? Should I make major changes in my holiday rituals?

If you are grieving a loss, this Grief Support Group is for you. If you have questions about how to go through the holiday season in the midst of grief, this group is for you. If you have experienced loss in the past, and have suggestions for others coping with holidays, this group is for you.

**When:** Thursdays from 5:00-6:30pm  
November 4, 18, December 2, 9

**Where:** Room 210

**Facilitator:** Sallie Suby-Long, please register with Sallie 303-791-0659 x32 or [sallie@stlukeshr.com](mailto:sallie@stlukeshr.com)





**James Ramsey**  
Director of Music  
Ministry & the Arts



**Kay Coryell**  
Associate Dir. of  
Music Ministry



**Ken Mervine**  
Organist/  
Accompanist

## New York's Broadway Meets 8817 South Broadway

The Wesley Players is working now on an original compilation of great Broadway hits from the past and present. Interwoven by our very own Jack Kennedy, these acts will have something for everyone. Ranging from *South Pacific* and *Annie* to *Ragtime* and *Grease* we are covering Broadway's history and including numbers for children, youth and adults. These numbers vary in sizes as well so if you love to sing solo there are numbers for you. If you prefer to play in a large group, there are numbers for you. We have included many group numbers and there will be some dancing. Plan to join us now for this thrilling production!

### Jazz is coming to St. Luke's!

The Ministers of Swing and the St. Luke's Youth Jazz Orchestra are performing with featured guest, Gabe Mervine and his jazz ensemble, on **Nov. 7 at 7:30pm** in the Sanctuary. Gabe is a professional trumpet player here in Colorado and gigs in NYC and across the country. We are fortunate to have him join us for our jazz concert this year and yes, he's Ken's son. :- ) Mark your calendars! You won't want to miss this special event! Tickets are a recommended \$5 donation at the door.



**Auditions will be the evening of November 19 and the afternoon of November 20.** Music selections for these auditions will be available outside the music office starting November 1. We will hold callbacks for this show on December 8. Callbacks will include learning additional music and additional dance. We begin rehearsals January 5 and will run Wednesday evenings, Saturday mornings and Sunday afternoons through the end of February. We will perform the first weekend of March. A detailed rehearsal schedule will be available in the beginning of November. You can audition to only perform in one number or as many as we can make work. All are invited and all will be cast.

Check out our list of selected songs and let the excitement brew!

### Broadway On Broadway Show Order:

Song Title	Show of Origin	Group Size
Ragtime Opening	Ragtime	Large
Some Enchanted Evening	South Pacific	Solo/Duet
I Feel Pretty	West Side Story	Small
Comedy Tonight	Forum	Large
You're The Top	Anything Goes	Small
It's The Hard Knock Life	Annie	Large
You'll Never Walk Alone	Carousel	Solo/Duet
Seasons Of Love	Rent	Large
Pretty Women	Sweeny Todd	Small
I Have Dreamed	The King And I	Solo/Duet
Your Daddy's Son	Ragtime	Solo/Duet
Ol' Man River	Show Boat	Large
Oklahoma	Oklahoma	Large
Getting To Know You	The King And I	Small
All I Ask Of You	Phantom	Solo/Duet
Memory	Cats	Solo/Duet
Do-Re-Mi, Finale	Sound Of Music	Small
Hand Jive	Grease	Small
One Hand, One Heart	West Side Story	Solo/Duet
Bring Him Home	Les Miserables	Solo/Duet
Sunrise, Sunset	Fiddler On The Roof	Large
Sit Down You're Rocking The Boat	Guys And Dolls	Large

## Amahl and the Night Visitors

### Coming Dec. 17-19

During the third week of December this year, the St. Luke's Music Program and the Wesley Players will present a Christmas Festival featuring an American opera, "Amahl and the Night Visitors", by Gian Carlo Menotti. **Auditions for "Amahl" will take place the weekend of Friday Oct. 29 at 7:00pm, Saturday, Oct. 30 at 10:00am, and Sunday, Oct. 31 at 3:00pm.** Music for each role will be provided outside the music office the beginning of October. Written and debuted on NBC Television in 1951, the 45 minute opera will be the grand finale to an evening of beautiful christmas music presented by St. Luke's Music Ministers.

#### Roles for "Amahl" include:

Mother - Mezzo Soprano  
Balthazar - Bass  
Melchior - Baritone  
Casper - Tenor  
Page - Baritone  
Shepherds Chorus - 30-45 members  
Dancers - 6-10 member dance troupe

All are invited to audition. Questions, contact James Ramsey at 303-791-0659 x23.

### 8:00am Service Hymn Sing

Many hymns are part of our church culture - past and present. Like old friends, they bring a smile to our face and comfort to our hearts. Whether as an invitation to salvation, a time of prayer, rededication, a funeral, a wedding, a baptism, etc., hymns speak to us as verse upon verse and line upon line lays out a story - our story. We find our lives and ourselves in these songs and that is why they have staying power. For the next year during the 8:00am service, we are going to continue the tradition of having a mini hymn sing. As an added bonus, I've asked the 8:00 congregation to submit their favorite tunes so we can pick them for the services. If you love singing the old hymns and want to hear at least 3 or 4 every Sunday, then maybe it's time to switch to the 8:00am service!



### Upcoming Events

- ✱ **SLY PM Dinner** every regularly scheduled Sunday night at 5:30pm, \$2 Donations appreciated! You can now sign up to help provide dinners online [www.stlukeshr.com/sly/sundaydinners](http://www.stlukeshr.com/sly/sundaydinners) Having parents help provide a group meal in the middle of 4 hours of youth activities allows our youth to set aside blocks of time at church! We thank you for your help!
- ✱ **October 10 – SLY PM goes to the Corn Maze!** Bring \$10 for your admission to the Denver Botanic Gardens at Chatfield. Dress weather appropriate, we'll be outside for over an hour.
- ✱ **October 24 – SLY PM & SLY Jr. share watching a movie.** Popcorn provided.
- ✱ **October 31 – SLY PM goes Trick-or-Treating for DenUM!** Come in costume, and we'll head into the Ranch, asking for donations of non-perishable foods to give to Denver Urban Ministries' food bank.
- ✱ **Check out** [www.stlukeshr.com/sly](http://www.stlukeshr.com/sly) for up-to-date info on programs, activities, ministry opportunities and more!



**Chris Wilterdink**  
Director of  
Youth Ministry



**Susan Johnson**  
Assistant Director  
of Youth Ministry

### CHRIS's CORNER

## Get Pumped Up for Pumpkins

Yes, crates of large orange gourds will again fill the northern part of St. Luke's parking lot this whole month for the 2010 Pumpkin Patch! A few fun facts about our annual event.

The Pumpkin Patch is:

- The largest annual youth fundraiser. (All moneys raised goes toward 2011 Youth Mission Trips)
- Is open for 230 hours during the month of October! (Monday thru Friday from 11:00am to 7:00pm and Saturday/Sunday from 9:00am to 7:00pm)
- Is completely staffed by volunteers! (We need you to sign up for shifts. The sign up sheet is available by the donuts on Sunday mornings)
- Is the best place for youth and parents to earn scholarship money for 2011 mission trips. (Working 8 hours earns youth \$50 or 15 hours earns a \$100 individual scholarship for a 2011 Mission Trip. 6th graders thru 12th graders can earn these scholarships. Relatives can work on a youth's behalf, with their hours counting ½ time)
- Unloads and sells over 11 tons of pumpkins every year! (This year, they arrived at 1:00pm on Sunday, Oct. 3. Thanks to all who helped us unload!)

October really is a busy time for us! Even if you can't find the time to work at the Patch, we'd still love you to come by and shop. We have carving pumpkins of all sizes, pie pumpkins (great for painting), mini-table-top pumpkins, assorted gourds, hay bales, and much more! You can purchase pumpkins with checks or cash, and we appreciate your pumpkin purchases!

– *Peace and Love, Chris*



### Pumpkin Patch shifts are now available!

Make sure you and your parents sign up for shifts!!! The Patch will be open from October 3 until October 31! Youth 6th Grade-12th Grade can earn credit toward 2011 mission trips! Shifts available M-F 11:00am to 7:00pm and Weekends 9:00am to 7:00pm.

## MISSIONS



**Love INC**  
Love In the Name of Christ  
of Littleton

## “Empty Bowl Event”- Serving Up Love

On October 7, a network of 30 plus Christian churches, which includes St. Luke's United Methodist Church, is sponsoring their First Annual Empty Bowl Event and silent auction to benefit their work on behalf of the poor and disadvantaged in our area. You are invited to Love INC's Empty Bowl Event, Thursday, Oct. 7 from 6:00-9:00pm. Choose your own pottery bowl, enjoy gourmet soups, laugh with emcee Susie Wargin 9news sports anchor, and hear powerful stories of Love in action from volunteers and clients in Littleton. With a silent auction of art and musical guests, this will be a true celebration of churches working together to serve people in need. Your \$30.00 ticket supports the work of Love INC. Tickets will be available online at [www.loveincittleton.com](http://www.loveincittleton.com). For more details or to reserve a table, please call the Love INC office at 303-732-5925. Your presence will be a witness for Christ's Love in the community.





**Dave Cupp**  
Director of Finance



**Lisé Takayama**  
Assistant Director  
of Finance

### Thank You For Your Continued Support.

Our budget performance continues to go as planned. Thank you for making this happen.

### Don't Miss Wills, Trusts & Taxes

### Workshop at 7:00pm October 26 in the Sanctuary.

This event will be our first Planned Giving Team presentation. Come learn about some of the many ways you can give to St. Luke's through one of the programs offered by The Planned Giving Team and have it be a win win situation for you and St. Luke's. Linda Gardner, CPA, will be our guest speaker. Linda has worked closely for many years with the Rocky Mountain Conference United Methodist Foundation (RMC Foundation) serving as a Consultant and Board Member. Currently, she is serving as their Gift Planning Director. I know Linda and know that she is very dedicated to the success of the RMC Foundation and helping our Rocky Mountain Conference members do their estate planning in a beneficial way. It would be appropriate for you to bring a family member or friend. Refreshments will be served.

### Pick and Choose Your Method Of Giving to SLUMC.

We have many ways for you to make your giving to SLUMC easy and convenient. You may want to consider one of these convenient methods for your contributions. In addition to cash and checks, we offer online credit card transactions, stock transfers and scheduled automatic withdrawals from checking or credit card accounts. The following is a general summary:

- 1. General Fund and Capital Campaign:** All methods.
- 2. Grocery Cards:** Cash, check, scheduled automatic withdrawal from checking accounts.
- 3. Special Events:** Depending on the type of event may include cash, check, PayPal and online credit card transactions. The method(s) available at each event will be announced at the time of the event and are at the discretion of the sponsor.
- 4. Plus:** We're anxious to consider any reasonable method you know about that we haven't adopted.

### All New Members of St. Luke's are invited to our "New Member Meet & Greet"

Sunday, October 24, 2010  
4:00-5:30pm

Rev. Sallie and Tom's home

Come meet other new members and get to know your staff.  
Enjoy light snacks and fellowship.

Please RSVP the number of people attending  
to Lynda@stlukeshr.com or 303-791-0659 x20  
by Thursday, Oct. 21

**We celebrate your membership  
with the family of St. Luke's!**

*"For where two or three are gathered in my name,  
I am there among them."—Matthew 18:20*

## Hanging of the Greens...Already?

From Tricks to Treats! Well, that was fast! Already into fall, seems like the Pumpkin Patch is barely underway, and we're planning logistics for the Hanging of the Greens! Lucky for us, all we have to do is put up the trees and the lights, hang a lot of terrific ornaments, a dozen or so wreaths, a few light strings outside, and finish with a clean up.



Here's where you come in – we really need some extra hands this year and we've got room (and jobs) for everyone – this is one of our very favorite events! Feel free to bring children, they can help as well! After almost a year of headphone-only or just him in the car listening, Rev. Brad gets really fired up when we've got favorite carols playing through all of our speakers for everyone to enjoy! Great fun!

Please plan to join us on Saturday, November 27, from 8:00am-noon. With your help we'll completely transform the entire building in just 4 hours without a trip to the mall!

## New Fundraising Guidelines

The Trustees have recently revised the guidelines for fundraising efforts held at or sponsored by St. Luke's. The guidelines are available in the Church Office and on our website [www.stlukeshr.com](http://www.stlukeshr.com). Those interested in conducting any type of fundraising should read the guidelines and have the sponsoring ministry team fill out the appropriate forms and have them approved. Approval is required before any promotion for the fundraising (e.g., bulletin announcement) or the fundraising itself occurs. This will ensure that the fundraising is appropriate and will minimize overlap with other fundraising activities.

## WELCOME NEW MEMBERS!



**Marilyn Curtis** *"I like the Ministers and their sermons. I like the easy going atmosphere, not so formal. The people are friendly."*



**Buddy, Margaret, Andrew & Aaron Key** *"We have recently moved from Eagle, Idaho UMC. St. Luke's seems to be a vibrant congregation of the UMC, and we look forward to being members."*



**Pam Wiethoff & Sydney** *"We've been attending St. Luke's for years, we love all of the programs and wanted to join."*



**Elizabeth Yount** *"My first time attending St. Luke's was a great experience. I knew it was the church for me—beautiful music, people and a wonderful sermon from Janet."*



**Lisa Phillips**

*Welcome!*

**To become a member of St. Luke's United Methodist Church:**

Fill out the membership card located in the Friendship Pad or at the Get Connected Center. Simply hand the membership card to one of our Pastors or staff members at any time.

**Contact Lynda Fickling for more info:**  
303-791-0659 x20 or



**St. Luke's United Methodist Church**  
8817 S. Broadway • Highlands Ranch, CO 80129  
303-791-0659 • [www.stlukeshr.com](http://www.stlukeshr.com)

NON-PROFIT  
ORG  
**U S POSTAGE  
PAID**  
PERMIT #7  
LITTLETON, CO

*St. Luke's United Methodist Church welcomes you to our Christian family,  
where we share life. Wherever you are in your faith journey,  
you are accepted and encouraged to grow spiritually.*

*Join us in growing together toward full humanity through living  
the teachings of Jesus: Love, Acceptance, Justice and Hope.*

RETURN SERVICE REQUESTED

## Get Your Flu Shot at St. Luke's!

Date: Sunday  
Oct. 10, 2010

Time:  
8:30-11:30am



### OCTOBER 2010

Sunday	Monday	Tuesday	Wednesday	Thursday	Friday	Saturday
<b>FEEDING THE 5,000 U2CHARIST</b> 3 OCTOBER 1, 2 & 3, 2010 World Communion 8:00, 9:30, 11:00am: Worship - Rev. Janet Forbes 1:00pm: Pumpkins Arrive/SLY PM 1:30pm: SLY, Jr. Feeding of the 5,000 6:34pm: Fusion/U2Charist	11am-7pm 4 6:30pm: Women's Night Out	11am-7pm 5 6:00pm: Love & Logic Parenting	11am-7pm 6 5:45pm: Evening Prayers with Communion 6:30pm: Depression/Bipolar Support Group 6:30pm: Creating Tomorrow at St. Luke's 6:30pm: Wed. Night SLY	11am-7pm 7 6:30pm: Contemplative Fellowship	11am-7pm 8 Little School Closed 5:45pm: Parent's Night Out	9am-7pm 9 7:30am: Men Under Construction Breakfast
<b>BE BLESSED and Be a Blessing</b> 10 Stewardship Kickoff Children's Sabbath & 3rd Grade Bibles 8:00, 9:30, 11:00am: Worship - Rev. Brad Laurvick 8:30am: Flu Shot Clinic 9:30am: 3 Simple Ways 10:35am: Church Conference 11:00am: Creating Tomorrow at St. Luke's noon: UMW Team Meeting 4:00pm: Annual Family Hayride/Fusion* 5:30pm: Community Dinner (\$2) 6:00pm: SLY PM	11am-7pm 11 6:30pm: Live Love Laugh Club 7:00pm: Trustees	11am-7pm 12 6:00pm: Love & Logic Parenting 6:30pm: Finance Team 7:00pm: Creating Tomorrow at St. Luke's* 7:00pm: Missions Team	11am-7pm 13 5:45pm: Evening Prayers with Communion 6:30pm: Wed. Night SLY	11am-7pm 14 6:30pm: Communications Team 6:30pm: Contemplative Fellowship	11am-7pm 15 9:00am: Bettinger Photography 10:00am: Wesley Writers	9am-7pm 16
<b>BE BLESSED and Be a Blessing</b> 17 8:00, 9:30, 11:00am: Worship - Dr. Stephen Collins 8:15am: Contemplative Worship Service 9:00am: Bettinger Photography 9:30am: 3 Simple Ways 12:15pm: Spiritual Formation Team 4:00pm: Creating Tomorrow at St. Luke's* 5:30pm: Community Dinner (\$2) 6:00pm: SLY PM 6:34pm: Fusion	11am-7pm 18 9:00am: Bettinger Photography 7:00pm: Creating Tomorrow at St. Luke's*	11am-7pm 19 9:00am: Bettinger Photography 6:00pm: Love & Logic Parenting 7:00pm: Child. Ministry Team 7:30pm: Lay Leadership 7:30pm: Planned Giving Team	11am-7pm 20 9:00am: Bettinger Photography 5:45pm: Evening Prayers with Communion 6:30pm: Depression/Bipolar Support Group 6:30pm: Wed. Night SLY	11am-7pm 21 9:00am: Bettinger Photography 6:30pm: Contemplative Fellowship	11am-7pm 22 9:00am: Sanctuary Care Team	9am-7pm 23
<b>BE BLESSED and Be a Blessing</b> 24 8:00, 9:30, 11:00am: Worship - Rev. Janet Forbes 9:30am: 3 Simple Ways to Discover Our Community 10:00am-1:00pm: FALL FESTIVAL 4:00pm: New Member Meet & Greet 5:30pm: SLY, Jr. 5:30pm: Community Dinner (\$2) 6:00pm: SLY PM 6:34pm: Fusion	11am-7pm 25 6:30pm: Women's Night In 6:30pm: Executive Team 7:00pm: Women's Book Club	11am-7pm 26 6:00pm: Love & Logic Parenting 6:30pm: Learning Differences Support Group 7:00pm: Planned Giving Presentation 7:00pm: Staff Parish Relations	11am-7pm 27 5:45pm: Evening Prayers with Communion 6:30pm: Wed. Night SLY	11am-7pm 28 6:30pm: Contemplative Fellowship	11am-7pm 29 6:00pm: Amahl and the Night Visitors Auditions	9am-7pm 30 11:00am: Warren Village Haunted House 9:00am: Amahl and the Night Visitors Auditions 9:30am: Creating Tomorrow at St. Luke's*
<b>BE BLESSED and Be a Blessing</b> 31 8:00, 9:30, 11:00am: Worship - Rev. Janet Forbes 1:00pm: Amahl Auditions 5:30pm: Community Dinner (\$2) 6:00pm: SLY PM 6:34pm: Fusion	<b>NOV 1</b> 6:30pm: Women's Night Out 6:30pm: Long Range	2 6:30pm: What is a Methodist?	3 5:45pm: Evening Prayers with Communion 6:30pm: Dep./Bipolar Group 6:30pm: Wed. Night SLY	4 5:00pm: Grief Support Group 6:30pm: Contemplative Fellowship	5	6 *off-site

\*off-site