



The Chronicle

ST. LUKE'S UNITED METHODIST CHURCH

FEBRUARY 2012

Inside This Issue:

From Rev. Janet.....	2
From Rev. Brad.....	3
Methodism Musings.....	3
Called to Serve.....	4
From Rev. Sallie.....	5
Children's Ministry.....	6
Missions.....	8
SLY.....	10
Seasoned Voyagers.....	11
<i>and much more!</i>	



Love and All That Jazz Concert

Saturday
Feb. 11 at 6:30pm

- **The Soprano Effect & Ministers of Swing**
- **Divine Desserts**
- **Great gifts at the Silent Auction**

Get ready for a jazzed up night with Love INC on February 11th. Come to enjoy the Soprano Effect in their fourth Love INC concert. Also performing will be the entertaining Ministers of Swing jazz band led by director, Jim Ramsey.

Come with your check book or credit card and select that perfect valentine gift for you or someone you love. Enjoy Divine Desserts prepared by some of the best cooks in town.

Tickets are \$12 in advance, \$15 at the door. To purchase tickets, go to www.loveinlittleton.org > events. The concert will take place right here at St. Luke's UMC.

Christmas in the Park - Joy!

by Angie Steinhauer, Pastoral and Children's Intern

Christmas in the Park was a great success this year for the people of St. Luke's, those in need, and the other churches that partnered with AfterHours Denver and Rev. Jerry Herships. In an effort to share God's love with those that may have had few positive Christmas experiences this year, a group of givers showed up at Civic Center Park on Christmas Day at noon. The givers, which numbered about 170, were met by receivers, about 220; gifts were given and love was shared. This was a great experience for the 20 from the St. Luke's family that participated. Sharing Christmas gifts of socks, hand warmers, feminine hygiene products, cookies, sleeping bags (180 were given out that day!), hats, gloves, warm layers and trash bags was a special time. Through the donations of time, collecting items, and financial contribution, the people of St. Luke's took part in what will be a new tradition for Denver. The homeless that shared in the Christmas present could be viewed by some as the lost, the lonely, the forgotten, but we got to see them as the chosen, the gifted, and the loved. As Christians we are called to serve without judgment and to love our neighbors as ourselves.

continued on page 11



Special thanks to all who made our Epiphany Sunday on Jan. 8 so spectacular!

Don't Miss "She Loves Me"

A delightful musical
(and original story behind the movie "You've Got Mail")
by Sheldon Harnick and Jerry Bock



Presented by the Wesley Players:

- **Friday, March 9 at 7:00pm**
- **Saturday, March 10 at 2:00pm**
- **Saturday, March 10 at 7:00pm**

(Benefit Dinner at 5:30pm - Dinner Tickets available in the Office or Sunday mornings \$30/adults and \$5/students)

Show tickets available in the Office or on Sunday mornings or at the door at each performance.

ST. LUKE'S BENEFIT CONCERT SERIES
PRESENTS

BOULDER PHILHARMONIC ORCHESTRA
MICHAEL BUTTERMAN, MUSIC DIRECTOR

**SUNDAY, FEBRUARY 26, 2012
3:00PM**
(DOORS OPEN AT 2:30)

SHOSTAKOVICH: JAZZ SUITE NO. 1
RACHMANINOFF: PIANO CONCERTO NO. 2
SCHUBERT: SYMPHONY NO. 9, "THE GREAT"

EXPERIENCE SHOSTAKOVICH AS YOU MAY NOT HAVE HEARD HIM BEFORE
— JAZZY AND LIGHTHEARTED.

SERGEI RACHMANINOFF'S EVER POPULAR PIANO CONCERTO WILL BE PLAYED BY PIANO PRODIGY PETER MATHYS, WINNER OF THE YOUNG ARTISTS CONCERTO COMPETITION.

THE CONCERT CONCLUDES WITH SCHUBERT'S MAGNUM OPUS, THE "GREAT C MAJOR."

TICKETS AVAILABLE ONLINE WWW.STLUKESHRCOM AND AT ST. LUKE'S UNITED METHODIST CHURCH

8817 S. BROADWAY
HIGHLANDS RANCH, CO 80129
303-791-0659

GENERAL ADMISSION STUDENT - \$10
GENERAL ADMISSION ADULT - \$20
PREMIUM SEATING - \$30

PROCEEDS AS WELL AS THE OPPORTUNITY TO DONATE THE PURCHASING OF NEW INSTRUMENTS WILL BENEFIT STUDENTS AT THE JOHN WESLEY SCHOOL IN SANTA CRUZ, DEL GUICHE, GUATEMALA.

Sunday Worship Services:

8:00am, 9:30am, 11:00am

6:34pm: Fusion

Contemplative Services also offered
(Check website for dates and times)**Sunday School:**

Adult, Youth & Children:

9:30am & 11:00am

Nursery available for:

8:00, 9:30 & 11:00am services

Church Office.....303-791-0659

Fax.....303-470-5615

Email.....office@stlukeshr.com

Website.....www.stlukeshr.com

Preschool Office.....303-791-1982**Staff:****Rev. Dr. Janet Forbes.....x13**
Senior Minister Emergency: 303-241-9312**Rev. Bradley Laurvick.....x12**
Associate Minister Emergency: 720-296-1251**Rev. Sallie Suby-Long.....x32**
Associate Minister Emergency: 303-475-0141**Angie Steinhauer.....x28**
Pastoral and Children's Ministry Intern**Sharon Oliver.....x27**
Director of Children's Ministry**Dawn Johnson.....x11**
Assistant Director of Children's Ministry**Samantha Leahy.....x40**
Director of Childcare**Erin Klein.....x14**
Interim Director of Youth Ministry**Susan Johnson.....x19**
Assistant Director of Youth Ministry**Kay Swanson.....303-791-1982**
Director of Little School**Dr. James Ramsey.....x23**
Director of Music & Arts Ministries**Kenrick Mervine.....x33**
Associate Director of Music Ministry & Organist**Jennifer Ferguson.....x37**
Associate Director of Music Ministry**Kay Coryell.....x36**
Director of Handbells & Children's Music Ministry**Ernie Rodgers.....x44**
Fusion Worship Leader**Carrie Mallory.....x35**
Assistant Fusion Worship Leader**Jenna Wilcox.....x22**
Director of Drama Ministry**Brenda Schafer.....x10**
Office Administrator**Dave Cupp.....x24**
Director of Finance**Lisé Takayama.....x16**
Assistant Director of Finance**Lynda Fickling.....x20**
Director of Servant Ministry/Spiritual Director**Barry Curtis.....x39**
Facilities ManagerAll submissions for the **March 2012**
issue of The Chronicle are due **Feb. 20**
Editor: Sharon Oliver
chronicle@stlukeshr.comThe Chronicle prints 10 times per year and
is emailed to those on our email blast list,
and it can be found on the church website.Printed copies are available at church
entrances. To receive The Chronicle via US
mail, please call or email the Church Office.**Rev. Janet Forbes**
Senior Pastor

Celebrating Lent & Easter at St. Luke's

Turn the Christian Year with the Imposition of Ashes

The Christian year tells the story of Jesus in two cycles of time. The year begins with the Christmas cycle of Advent, Christmas, and Epiphany as we celebrate Jesus' birth. The story culminates in the Easter cycle of Lent, Easter, and Pentecost with the wonder of resurrection. The turning of the year from one cycle to the next is marked by the tension of two very different holidays... just 24 hours apart.

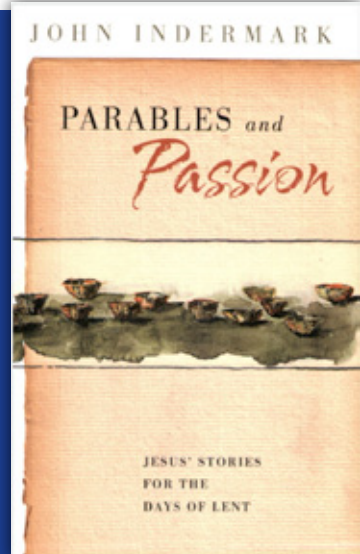
The Bible tells us that before Jesus began to teach the people he prepared himself by spending forty days praying in the wilderness. We call these forty days Lent, and Lent is the time when Christians prepare for the celebration of Easter. Some people still give up a favorite food during Lent, but in the Middle Ages, everyone had to go without eating meat or butter or eggs for the whole forty days.

Lent begins on Ash Wednesday, so on Tuesday everyone makes a good start by confessing their sins and having them shriven – in other words, forgiven. That is why the day is called Shrove Tuesday. They cook a meal of pancakes, using up all the eggs and butter in the house. Shrove Tuesday is still called, “mardi gras”, which means “greasy Tuesday”, when, traditionally, all the fat in the house has to be used up.

After the family feasts on pancakes on Shrove Tuesday, February 21 from 5:30 to 7:00pm, our church family will mark the first day of Lent with the observation of Ash Wednesday, February 22, at 7:00pm. Everyone will be invited to write or draw a confession or a commitment to growth and give it to the flash of the fire! Then, we will receive the mark of the ashes and oil on the hand or forehead. This is a 45 minute family-friendly service in which school-age children can participate fully. Very young children will enjoy the help of a parent.

Our Lenten theme, TELL ME THE STORIES, will explore the parables of Jesus found in the gospel of Luke. There will be three opportunities beginning Feb. 25 (Saturday morning at the Egg & I at 7:00am, Wednesday evening at 6:00pm, and Sunday morning at 11:00am) to participate in the six-week study, *Parables and Passion: Jesus' Stories for the Days of Lent* by John Indermark. We will anticipate Easter, April 8, with the haunting presentation of Karl Jenkins, *Stabat Mater*, on Good Friday, April 6, as we reflect on the crucifixion through the eyes of the grieving women who surrounded Jesus.

Join us as we observe the turning of the Christian year!

Blessings, Rev. Janet**Pick a time to join us
for our Lenten Study:****Sundays at 11:00am,
Wednesdays at 6:00pm,
or Saturdays at 7:00am**
(Saturday Study is at Egg & I)

Leadership Workshops from Mile High Pikes Peak District

On Saturday, March 3, the United Methodist churches of south Denver and Colorado Springs will host leadership workshops. **All are welcome!** The event is from 8:30 to 1:00pm at the Tri-Lakes United Methodist Church in Monument, Colorado.

Keynote: Jerre Stead, will speak on **Good News in Tough Times**. He heads a Fortune 500 company that is the leader in providing information and insight services to businesses worldwide. Under his leadership IHS has grown into a billion dollar company, whose stock price has increased 400%. Mr. Stead is driven by ethics, faith, and values. He serves as Chair of the Alzheimer's Research Institute and the Garret Evangelical Seminary Board of Trustees, and is past Chair of the Center for Ethics and Values at Garrett. He attends St. Andrew UMC, where he offers classes on values driven leadership and the global economy. He is the author of *Leadership Unbound*.

Workshops offered will be **Values Based Leadership** by Jerre Stead, **Appreciative Inquiry** by Dr. Janet Forbes, **Creating Congregations of Generous People** by Dr. Harvey Martz, **Clergy Transitions** by Rev. Bob Kaylor, and **The Future of the Church** by Rev. Stephanie Price.

The registration deadline is Feb. 15. To register, go online to www.mhpp.rmcumc.org and click on Events. St. Luke's has paid for group registration so everyone can participate at no cost.



**Rev. Bradley
Laurvick**
Associate Minister

Holy Conferencing

My senior year of high school, I was voted "Most Likely to go into Politics." This shocked me for two reasons: 1. *I didn't think I'd every get voted "most likely to" anything, let alone something that wasn't embarrassing.* 2. *I knew then what my professional calling was. "I'm not going into politics," I thought, "I'm going to be a pastor."* I laugh at that thought even as I write this article.

There is of course, a great deal of intricacy in pastoral work. There are people, opinions, confidences, disagreements, ideologies, rules and laws, institutional structure... things that in many arenas lend themselves to the idea that something is political. What I have discovered is that whenever and wherever there are people, there are politics. There are family politics, school politics, club politics, soccer parent politics, you get the idea. So of course there are "politics" in my work. The word "politics" has Greek roots meaning "of, for, or about citizens," and since we are participants, or citizens if you will, of many arenas, we participate in many different political theaters.

So why am I writing about this? Two words – General Conference.

Every four years the United Methodist church has an international gathering of leadership that works to direct the entire denomination. It all began with three simple questions: "What to teach? How to teach? and What to do?" Every four years we seek to answer those questions. The General Conference is the only body that is able to "speak" for the United Methodist Church. We shape the rules, the beliefs, the structure that guide us as a church. The General Conference is made up of no more than 1000 people, this time it's about 946 people who will meet from April 23rd to May 5th in Tampa, FL. The 946 people are half clergy and half lay people (pastors and non-pastors) from all over the globe. Our geographical region (the Rocky Mountain Annual Conference) gets to send 3 clergy people and 3 lay people to be a part of this event. I am helping lead the delegation as the head clergy delegate (a role held previously by Rev. Janet.)

I want to return to the idea of politics for a moment and contrast it with something. John Wesley, the founder of Methodism, did not believe the kind of work done at General Conference was politics. He believed it was something different, something holy. John Wesley believed that any time faithful people gathered to discern the will of God (this could be Sunday School, Bible Study, friends over coffee, General Conference, anything), they were doing something he called, "holy conferencing". Holy conferencing is one of the ways Wesley believed we could encounter God's grace; that the process of discerning God's will brought us closer to God. I agree.

In the months to come, I will invite you to read legislation with me, discuss where our church should be going, and to learn about the ways our church works to follow God's will. I've always loved this kind of stuff, maybe that's why I was voted "most likely"... Though I would prefer "Most Likely to go into Holy Conferencing."

More on our Lenten Study...

As Rev. Janet mentioned in her column, we will be gathering for our a Lenten Book Study throughout Lent as we prepare for Easter. We are going to dig into the Parables of Jesus by reading *Parables and Passion: Jesus' Stories for the Days of Lent* by John Indermark. There are three opportunities to participate in this 6-week study. Saturday mornings, Sunday mornings, and Wednesday nights.

The Saturday morning group, led by Rev. Brad, will begin Saturday, Feb. 25, 7:00-8:30am at the Egg & I in Highlands Ranch (off Highlands Ranch Pkwy. and Town Center Dr. near the Tattered Cover). The Sunday morning group, led by Brenda Schafer, lay leader, will be will begin Sunday, Feb. 26, 11:00am-noon in Room 213. And the Wednesday night group, co-led by Rev. Sallie and Angie Steinhauer, will begin Feb. 29 6:00-7:30pm in the Conference Room.

If you would like to participate, please visit the Learning With St. Luke's table in Fellowship Hall on Sunday mornings or email Rev. Brad (brad@stlukeshr.com) to get a book.

The Common Table

Sunday, February 12, 12:15-2:00pm

YOU are invited! Join us for a potluck lunch, fellowship, and information as we begin a new year.

The Common Table is a way to discern the will of God individually and collectively; it's a way to grow as spiritual friends. Everyone is invited: first-time guests, long-standing members, clergy and staff, ministry team leaders, and everyone who wants to learn and grow with us and help shape our direction. Come and be curious with us! Childcare is available: 303-791-0659 x47; please call 48 hours in advance.

Monty's Methodism Musings: The First Great Awakening

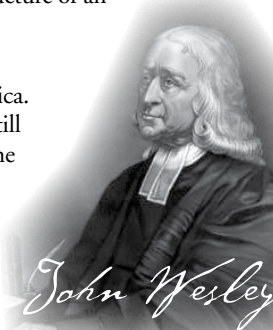
by Monty Hoffman

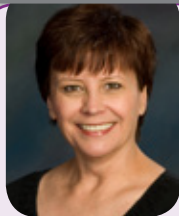
During the first half of the 18th century in northern Europe and in England, society was undergoing a profound change. The hierarchal and very static social structure of feudal Europe was being overcome by the start of the industrial revolution. Technology was allowing people from many different social and economic levels access to information that they had not previously had. The printing press and the resulting literacy gave a much larger number of people the opportunity to read the Bible and religious tracts. People were able to read and interpret the scriptures for themselves instead of receiving all of their religious instruction through the churches. This removed the churches from their role as an intermediary between people and God.

Although the theology of the leading ministers of the movement ranged from Jonathan Edwards' strict Calvinism to John Wesley's Arminianism, they all preached the idea that the relationship with God should be personal. Rather than have believers' interaction with God pass through the structure of the church, all people could experience God in their lives. Wesley's Aldersgate Experience convinced him that this type of experience of God was invaluable in shaping us as Christians and as Methodists we believe that God's Love and Grace are active in our lives and help us live Christian lives.

While America was not experiencing the industrial revolution, it was a country and a society than had very little structure. The idea of a personal relationship with God had a great appeal to people that lived at the edge of a great wilderness. The message of the First Great Awakening was important to people who lived far from settlements and could not regularly attend church. It helped them understand that through study of the Bible and other means of grace, they could have a relationship with God apart from the formal structure of an organized church.

This message helped shape the Methodist movement in America. As United Methodists we are still committed to the central theme of the First Great Awakening, that our relationship with God is personal and that God's Love and Grace are active in our lives.





Lynda Fickling
Director of
Servant Ministry/
Spiritual Director

We are Called to Serve

"The reward, the real grace of conscious service, is the opportunity not only to help relieve suffering but to grow in wisdom, experience greater unity, and have a good time while we're doing it."

—Ram Dass and Paul Gorman, *How Can I Help?*

Get Connected Center: Perfect way to meet people and offer help in getting them connected with our Community. Serve one Sunday a month, 30 minutes. Contact Lynda for more information!

Spiritual Gifts: Hospitality, Helps, Service

Contact: Lynda Fickling Lynda@stlukeshr.com x20

Sound Booth Team: This team has an active role during Sunday morning worship. You may not see the hard work behind the sound, PowerPoint and lights but they are there providing us with a wonderful worship experience. They also work special events such as our musicals, dramas, and weddings. If you enjoy working as a techie (or always wanted to!) join our team!

Spiritual Gifts: Administration, Helps, Creative Communication

Contact: Tim Boles 303-791-9643 tmboles@aol.com

****NEW Team:** Do you enjoy getting to know people, listening to their stories, help them feel like St. Luke's is their home? If you have a passion for people and are excited to start new programs, contact Lynda Fickling our Director of Servant Ministry for more information!

Spiritual Gifts: Encouragement, Discernment, Hospitality, Administration, Helps, Service

Contact: Lynda Fickling Lynda@stlukeshr.com x20

To discover more about your own Spiritual Gifts and where you may serve best, visit http://stlukeshr.com/p_volunteer.asp, and beginning serving where God has given you talents and gifts!

If you are searching for a place to connect at St. Luke's, please contact Lynda Fickling, Director of Servant Ministry, 303-791-0659 x20 lynda@stlukeshr.com or Bruce Pawley, Lead for Lay Leadership, 303-471-8353 brucepawley@comcast.net and/or stop by our Get Connected Center



Brenda Schafer
Office Administrator

PRAYER CONCERNS

Please stop by the Information Center, by the front door, where you will find the complete and updated Prayer Concerns list or view the listing on our website. Contact Rev. Sallie Suby-Long or Brenda Schafer if you have any additions/removals. 303-791-0659 x32, leave a note on the front desk, or email at sallie@stlukeshr.com or brenda@stlukeshr.com

LATEST ENTRIES TO PRAYER LIST:

Bat Dublin – mother of Bob Davis
Bob McGill – father of Sharon Oliver
Sam Leahy
Randy Carroll –
friend of Corbett & Kristin Foster
Caysen
Violet Bellis – cousin of Candy Keller
Betty Kieser – mother of Bonnie Funk
Barry Sims – father of Amy Ash
Erika Melander – colleague of Sherry Treat
Tamara Heister
Steve Treat
Sandy Robles – sister of Frank Harris
Jack Jones
Dawn Cyprus – aunt of Jenna Wilcox
Robert Hodge
Samantha Ferguson –
daughter of Brett & Jennifer Ferguson
Tom Connell
Donna Hochmuth – sister of Rick Jasper
Alexander Murray – father of Joanna Murray
Jackie Para
Truman King, Sr. – father of Truman King
Donna Earl – friend of Eric & Debi Ransick
Steve Riley's father
Jack Miller – friend of Amy Northrup

Brock Munoz – son of Fred & Jan Munoz
Jennifer Sims
Alberta Haas
Carl Cleveland
George Hazelwood
Julie Butler – granddaughter of Caroline Butler
Amiel Smith
Linda Ready's father
Joe Forbes – brother of Rev. Janet Forbes
Teresa Bradley – mother of Jennifer Ferguson
Jean Brown –
co-worker's mother of Rachel Nolder

SYMPATHIES TO:

Grant & Heidi Carlson on the passing of Heidi's brother, Evan Miller
Ed & Eileen Law on the passing of Eileen's sister, Madeline Reed
Larry Dunlap on the passing of his wife, Betty Dunlap
Corbett & Kristin Foster on the passing of Corbett's grandmother, Delia Jo King
Bruce & Kathleen Brown on the passing of Kathleen's father, Franklin L. Roberts
Val Clark on the passing of her friend's son, Brad Girling
Wes & Vickie Vargo on the passing of Wes' mother, Annie Vargo

A Special Thank You – Acts of kindness warm the heart, soothe the soul, and make the world turn more gently.

Cards and letters arrived thanking St. Luke's for their Giving Tree Christmas gifts from those who received them. The outpouring of gratitude was overwhelming. The impact those few gifts had on the lives of those who received them was immense. Some even mentioned that without the gifts they received from the Giving Tree, they would have had none. Many others mentioned that they were so surprised and humbled to find themselves on the receiving end of things and were anxious to pay this forward as soon as they were able. We are so blessed to be involved in this giving ministry. Hearts were warmed on both sides of this Giving Tree.

Thank you Servants of St. Luke's!

Blessings and love to a few hundred(!) folks that helped prepare before, during and after Christmas. We were blessed with many hands, warm hearts and welcoming smiles that brought the season special meaning to us all. From those who decorated our church for the Hanging of the Greens, to the many hospitality areas, the wonderful homemade cinnamon biscuits on Christmas Day - thank you Val Clark!, the musicians, drama performers and do many more including all of those who helped clean the small candles to be ready for next year. Thank you for sharing a part of you, to make this Christmas Season at St. Luke's memories for all.

"A New Beginning" a 12-week Divorce Recovery Workshop

will begin Monday, March 5, 6:45-9:00pm at St. Luke's

For those who are separated or divorced, this workshop brings healing from a Christian community where one can experience acceptance, care giving, and the love of God.

Cost is \$100~ register by contacting Larry Sears 720-524-0440

Scholarships are available.



Rev. Sallie Suby-Long
Associate Minister

From Rev. Sallie

Our Sacred Stories

In the past few weeks, I have had the honor of hearing stories from several people. When I hear someone share part of their personal life story – what challenges them, what they care about most deeply, what they dream about for the future, it is such a privilege. Whether through a simple conversation, through writing, or in a more formal way when someone has the courage to speak honestly and transparently about their life, it's a gift to others. And, by telling and embracing our stories, we begin to weave together the important patterns of our lives and learn from them. We can often see more clearly, discern those things that give our lives meaning, and see how our experiences, those that are difficult, joyful, painful, challenging, and surprising come together to make us the individuals we are. When

Telling and honoring our own stories fosters spiritual growth and helps us to move toward wholeness.

I was a student at Iliff School of Theology, one of my professors commented that theology is really about the stories of people's lives and how God is present in those stories. The statement truly resonated for me. Telling and honoring our own stories fosters spiritual growth and helps us to move toward wholeness. It takes courage, it takes trust, and it is some of the most important work we can do for ourselves and for each other. There are many ways to share our stories at St. Luke's through classes, in Disciple groups, in book studies, and through intentional conversations with one another, to name just a few. This month we will begin offering expanded opportunities to participate in Spiritual Direction - a practice that encourages individuals to honor all aspects of their life stories and to seek God's grace and acceptance related to every part of life. ***On Sunday, February 12 at 4:00pm there will be an Introduction to Spiritual Direction in the Chapel.*** Everyone is welcome. If you are not able to join us on the 12th but you would like to know more about Spiritual Direction opportunities, I'd love to talk with you. I always welcome your calls and emails. Whether you tell your story, create a safe and respectful place for someone else to share their story, know that you are engaging in sacred, healing work. Telling our sacred stories and respectfully hearing others' stories is a powerful way to experience God's sustaining grace.

Micah Series: Drop In and Learn!

Going Strong Sundays at 11:00am!

- February 19, 26, March 4, 11, 18 - ***Care of Creation*** (Sharon Oliver, Susan McIntosh)
- April, May - topics selected by you! Contact Patricia Westlake, ptrcSWst@aol.com, to schedule a topic. We may do a study of a book about advocacy for children, "Weaving - A Just Future for Children" by Diane Olson and Laura Friedrich.



Journey toward Wholeness

**ST. LUKE'S UMC
SPIRITUALITY
AND WELLNESS
WORKSHOP
SERIES 2011/2012**

Spirituality and Wellness Series 2011/2012 Continuing our Journey toward Wholeness

by Jane Staller & the Spirituality & Wellness Team



On January 17, Reverend Jerry Herships led our second (and largest ever) Spirituality and Wellness workshop. 135 of us from St. Luke's and neighboring communities gathered to learn, laugh, and share our stories. Jerry expanded on our previous theme, "Chasing Happiness" (Dr. Andi Pusavat - October 14), by telling a life story, his own story, of chasing a dream of happiness and finding it in a most unexpected place. The experiences he shared provided powerful connection points for many participants:

- "Closing our eyes and envisioning ourselves as ten year olds, remembering what we wanted to be when we grew up. This was a powerful experience. I now see clearly what I enjoyed and how that was stifled in me. I appreciated Jerry's explanation that our passion does not have to be our vocation. I see that I can easily pursue my passion through extra-curricular activities."
- "Leaving old dreams behind in the rear view mirror," can be a painful experience, but it also creates opportunities for new dreams."
- "Some experiences in our lives can be so devastating, and to think that they can be transformed into something good, something that can be a gift of understanding or compassion to others going through that same experience."
- "A quote from Mark Twain, 'Be wary of those who belittle your ambitions in life; only great people will make you feel that you too, can be great.'"
- "Seeking what our authentic thing is in the world and sharing it as often as possible is vital to happiness and wellness. Offering who we are with our whole heart."
- "When we are called to something, it isn't necessarily easy – it is likely to require a lot of commitment – Because something is hard or challenging, doesn't mean we're on the wrong path."
- "The twists and turns of Jerry's journey and the anguish he felt along the way, when it became clear that the goal he had set for himself was not attainable. Finally, when he slowed down and started listening to the inner voices - and he allowed his "spirituality" to grow- he began to find the journey God had planned for him."
- "Even if we don't accomplish the thing that we may have set as a goal, don't forget about all the good things that have happened or that we have learned in the process."

If you recognize your own experiences in any of these comments, then we hope you'll join us on Tuesday, March 6. Reverend Jerry Herships returns and will join Dr. Andi Pusavat, for an interactive and practical conversation about how to move beyond "Chasing Happiness" toward wholeness in our lives. If you'd like to review recordings of either Andi's workshop, "Chasing Happiness", or Jerry's workshop, "Finding Wellness," please see Rev. Sallie.

**Join us for our
Next Workshop:
Maintaining
Wholeness
March 6, 2012
6:30-8:30pm
Fellowship Hall
Rev. Jerry Herships
& Dr. Andi Pusavat**



Jake's Take

Woof! Woof! Jake, Ms. Sharon's dog, here. I hope you all had a woof-tastic holiday and are ready for all of the amazing things 2012 will fetch... err... bring!

To recap our December and January... the annual **Children's Christmas Pageant** was amazing and we raised \$225 for the Guatemala Bible Camp! We made fun crafts at our **Family Advent Devotionals** and learned on **Candy Cane Sunday** that this candy can remind us of Jesus! Our **Children's Christmas Eve services** were so much fun and I learned from a penguin that Jesus is the best gift of all! **SLY, Jr.** had a fun gift exchange in Dec. and a crazy lock-in on Friday Jan. 13 where 65 5th & 6th graders spent the night in the church! We learned life is like a roller coaster! ...but in a good way - full of ups and downs and we learned that nothing - not even the lowest lows or the highest highs can separate us from God's love. We also had a fantastic time bowling - hurray for gutter guards! In **Sunday School** we learned all about the Bible as a book and we got to parade into worship with the Kings on **Kings Sunday**. We re-opened our **Faith Harder Memorial Children's Library** and we welcomed 2 more **Acolytes**! We also had a great **Info Night** discussion on how teachers can help kids with special needs thrive in our Sunday School environment. And we did so much more! Whew! What a great couple of months. I'm panting just thinking about it! Thanks to ALL who helped!!!!



Now here's some more stuff to look forward to:

- **Craft Prep Night** is Feb. 7 at 6:00pm - Calling all adults who like to work behind the scenes - we'll provide the scissors and glue sticks!
- **Love & Logic Parenting Classes** start Feb. 9 for 4 Thursdays at 6:00pm - Cost is \$69 per person, \$130 for couples. Contact Sam for more info!
- **Parent's Night Out** will meet on Friday Feb. 10 at 5:45pm
- **PEAK Sunday School's** new rotation *Jesus & the Children* - starts Feb. 12!
- **SLY Jr.** will have a night of comedy with our SLIP & WITY Improv Groups on Feb. 12 and then have a Pool Party with SLY on Feb. 26!!
- **Playgroup** will meet on Feb. 17 & March 2 at 9:30am - all are welcome!
- **Family Movie Night** will be Friday Feb. 17 at 6:45pm - Wear your pjs, bring your pillow pets and come join us for "Kung Fu Panda 2" rated PG - and enjoy some fresh popped popcorn!
- Our annual **Children's Dinner Theater** will partner with Kidz Prayz and do a MUSICAL this year! Auditions Feb. 26 at 10:30am and on Feb. 29 at 6:30pm. All kids 1st-6th grade will get a part! Rehearsals will be Wednesday evenings and the performance will be Friday May 4!
- **Easter Fun Day** is March 31 - if you'd like to help out with this amazingly fun morning - please let us know! We need 50 helpers!
- **Vacation Bible School** dates are set! Morning Session is June 25-29 and Evening Session is July 10-13. Online enrollment opens April 16.



We are collecting **new packaged toothbrushes** and **used crayons** for Ms. Sharon to take to Guatemala over Spring Break. Drop off in Goliath. THX!

Don't forget we have a great website www.stlukeshr.com/children with lots of important info on it. You can even check out the **Sunday School servant schedule** there! We'd love for you to serve with us!

Please let Sharon, Dawn or Sam know if you have any questions about any of the above or with Children's Ministry.

(sharon@stlukeshr.com, dawn@stlukeshr.com, sam@stlukeshr.com)

This is Jake, heading out to chase squirrels.... until next month!



Sharon Oliver
Director of
Children's Ministry



Dawn Johnson
Asst. Director of
Children's Ministry



Samantha Leahy
Director of Childcare

St. Luke's Kids
Growing with God



Kay Swanson
Director of
Little School



Little School News: February Fun at Little School

REGISTRATION for our new families was due February 3, however, we still have room in a few of our classes, so PLEASE tell your friends! Remember that we have started a new 2 1/2 year old class for children 2 by April 1, 2012 and potty trained.

February is a month full of LOVE! We start off by

sharing our day with our Dads or Grandfathers on "**Daddy's Saturday**" February 11. It is a really fun opportunity for dads to visit preschool, visit their child's classroom and make something special for Valentine's Day. We love giving our dads time to be with their children on a very special day. Heart parties will be held on Feb. 13 and 14 with lots of pink and red, games and treats.

FEBRUARY 10-17 we will be hosting a **Scholastic Book Fair** at Little School. The fair is open to all church members and books will be available for purchase during the day from 9:00-1:30pm, concentrating before and after school. The fair will also be open on Sat. Feb. 11 for Dad's Saturday AND Sunday Feb. 12 during church 9:00-11:30pm. All are welcome and your purchase helps to provide quality literature for Little School!

February 20 and 21 we will be closed for President's Day and for Parent-Teacher conferences. This is a great time for teachers to talk one-on-one with parents about their wonderful children and how they are progressing.

Thank you for your continued support and prayers for Little School!

Blessings, -Ms. Kay and Staff

It's the beginning of 2012, and you are probably pondering one or more of the following questions:

- **Where is my family going to vacation this summer?**
- **How will I use our camping gear this year?**
- **Or maybe...Will this be the year we try camping for the first time?**
- **How can I get to know more families at St. Luke's?**
- **Why do so many people wear tie-dye to church?!!**

The answer to all these questions is:



Join members of St. Luke's for a fun, family-oriented camping trip. It's a great way to get to know lots of new people, enjoy the great outdoors, and eat something on a stick! Actually, it's a lot more than that. Last year we camped at a new place, Snow Mountain Ranch in Granby, CO. We tried many new activities such as zip lining, high & low ropes courses (team building) and went on a night hike. We biked, swam, canoed, rode horses, sang songs, made crafts, played games, relaxed, and, of course, tie-dyed and ate s'mores!

We would love to have you join us this summer! Family Camp will be July 20-29, 2012. You are welcome to join us anywhere from one night through the whole week. Whether you are a die-hard camper, or someone who has never camped before, Snow Mountain Ranch has a place for you. There are sites to pitch your tent or hook up your RV, you can stay in a cabin, or even sleep in a yurt! Costs are reasonable and the experience is priceless. Sign up at the table or kiosk in the Narthex, online at the St. Luke's website, or with Amy Antinoro at 303-663-6656.

More from Les: Foundations

by Rev. Les Ludlam, St. Luke's Lay Associate Pastor 1993-1997

Jesus said, "For which of you, intending to build a tower, does not first sit down and estimate the cost, to see whether he has enough to complete it? Otherwise, when he has laid a foundation and is not able to finish, all who see it will begin to ridicule him, saying, this fellow began to build and was not able to finish." —Luke 14:28-30

The Desert Seed Company was a small division of a solar company acquired by Atlantic Richfield Company during the height of the company's research into ways of developing renewable energy resources in the early 1980's.

One of the operations created by Desert Seed Company was a small alfalfa processing plant near El Centro, California. The plant was designed to recover a compound called "Xanthophyll" from alfalfa.

Xanthophyll is used as a coloring agent (Orange) and is chemically related to Chlorophyll (Green). Commercial chicken producers add this product to their poultry feed mixture to produce a customer-pleasing golden hue in the meat of a dressed bird.

"Shall we hang on to this plant?" I was asked, "Go take a look at it and if it can be profitable, we might hang on to it." The unsaid inference was that if the company did keep it, I might be named the plant manager.

Now, the thought of living year 'round in the Imperial Valley was not my idea of the good life! El Centro and surrounding area is extremely hot most of the year. But the project was technically fascinating and I liked the possibility of getting back into some operations function. I drove down to El Centro to meet the plant staff and learn as much as I could about the plant.

The plant site was easy to find, with tall elevators and large vessels! It resembled the oil shale demonstration plant I had worked upon during the early 1970's.

I approached the evaluation of the plant with enthusiasm!

Plant technical analyses were completed and Xanthophyll market studies were continuing. The plant worked well and produced a consistent

product; the farmers liked the premium price they were paid for the alfalfa. Things looked promising!

However, the poultry business operates on a thin profit margin. We needed to understand the implication of this, so there were talks with poultry producers.

They told us, "You make a good product, and it does what we need. The dressed chicken color looks the way we believe the customer wants. But there is a problem with your product, it's too nutritious!"

One producer representative told us, "We must carefully balance all the nutritional factors in the feed we give our chickens to satisfy customer expectations and maximize our profit margin. Your Xanthophyll product is so rich in protein that adding it to the poultry feed mix, forces us to adjust the total blend. Our total feed costs go up when we use your product."

The producers had done their homework and insisted on a lower price for our Xanthophyll product.

I, on the other hand, had focused more on the technology of producing Xanthophyll and less on the marketplace. We looked at how we could cut costs and lower our price.

A surprise and the final straw for the Desert Seed Company plant came a month after I arrived in El Centro. We learned that Mexican marigold growers could produce Xanthophyll without all the protein and could do so at a much lower cost. They lowered their prices to a fraction of our cost and the market for Desert Seed's Xanthophyll suddenly disappeared!

And so did the poultry producers. They had no interest in our product.

The market place doomed a technically sound, efficiently run and well-managed plant.

We closed the plant, paid the farmers to cancel our supply contracts, closed and dismantled the plant, and sold it for salvage prices. Our workers found local jobs or transferred to other company locations. (And I hadn't been particularly excited about living there anyway!)

Jesus' advice, given 2000 years ago, is just as valid today.

God bless us all! Rev. Les



"The organized unit of United Methodist Women shall be a community of women whose purpose is to know God and to experience freedom as whole persons through Jesus Christ; to develop a creative supportive fellowship; and to expand concepts of mission through participation in the global ministries of the church."

Planning for 2012 The United Methodist Women Board members met in January to plan out the calendar year. We are very excited about our three goals for the year:

1. **Achieve** Mission Today Silver status, continue as a 6-Star Unit and to increase the participants in the UMW Reading Program
2. **Project** with FET
3. **Involve** teen girls in UMW

We have also started planning our events for the year.

Please mark your calendars with the following dates:

- **St. Luke's United Methodist Women invite all women to a **Spiritual Day Apart, March 10, 8:30am-2:30pm** at Castle Rock UMC. A day of reflection, learning and fellowship facilitated by Rev. Dottie Mann. Bring your Bible, notepad and a small salad to share. Carpool from St. Luke's at 8:00am. Info contact Betty Ludlam 720-951-1171 or bludlam@wyoming.com**
- Spring Tea: April 22 at 2:00pm, Mission: UMCOR kits
Tickets: \$8 for adults, \$5 for children age 12 and under
- Fall Meeting: September 9
- Candlelight Dinner: December 4

Subgroups of United Methodist Women at St. Luke's UMC:

Remember to check out the Interest Groups and find your spot to help us fulfill the PURPOSE of United Methodist Women.

- **Simply Saturday** First Saturday of the month, 8:30-10:00am in the Youth Room; bring a breakfast item to share. Women ages 18 & up are invited for devotion and mission. This year's theme: **Friendship of Women-The Hidden Tradition of the Bible** by Joan Chittester

March 3: Chopped: Our own crazy cooking competition, Hosted by Teri Burget & Dawn Johnson, **Mission Focus:** Non perishable food for DenUM Childcare available sam@stlukeshr.com. 48hrs in advance. For more information, please contact: Elena Lynch elenalyndh@gmail.com or Lynda Fickling lynda@stlukeshr.com. Visit www.stlukeshr.com, Quick links, Email Lists, to add your name to the email distribution list.

- **Book Group** Fourth Monday of the month, Room 206.

Afternoon meeting 1:00pm. Evening meeting 7:00pm.

February 27 – **Shanghai Girls** by Lisa See

March 26 – **Heart of Darkness** by Joseph Conrad

April 23 – **The Weird Sisters** by Eleanor Brown

For more information, please call Renae Parra at 303-683-0872. To be added to the email mailing list, send a request to RenaeParra@aol.com

- **Itch to Stitch** Third Wednesdays of the month, 7:00-8:30pm downstairs near the Children's Library. For more information, please call Fran West at 303-797-7107.

- **Women's Night Out** First Mondays, 6:30pm various locations

February 6 – The Tavern, Downtown Littleton

March 5 – Hacienda Colorado, Lone Tree

Contact Elaine Carlstrom ecarlstrom@comcast.net

Mark Your Calendars:

- March 2, 10:00am – **Church Women United World Day of Prayer**, Mayflower Congregational Church, 3011 S.Acoma
- March 10, 8:30am-2:00pm – **UMW Spiritual Day Apart** at First UMC at Castle Rock UMC. Bring a salad to share.
- April 28-29 – **Spiritual Retreat** in Estes Park: "Enfolded in God's Love"
- May 4, 11:00am – **Church Women United Fellowship Day**, Presbyterian Church (2nd and Grant)
- June 9 – **District UBUNTU Work Day**
- June 16, 6:30am – **Annual Conference UMW Breakfast**
- July 12-14 – **School of Christian Mission**, St. Andrew's UMC
- September 22 – **District Meeting**, Applewood Valley UMC, 2035 Ellis Street, Golden
- October 19, 5:00pm & October 20, 9:00am – **Conference Meeting**, Park Hill UMC (5209 Montview Blvd., Denver 80207)
- November 2 – **Church Women United**

H.A.A.T Force Update

I would like to take this opportunity to say "Thank You St. Luke's". You raised over \$3,000 for H.A.A.T. Force from the Giving Tree.

I would like to share with you some statistics and facts about homelessness.

One question I like to ask any group that I address is. What do you think the average age of a homeless individual is? I have guesses of anywhere from 20's to up to 50's or even older. Does that sound right to you? Well they are all wrong. The average age is nine years old..... Can you imagine being homeless with your nine year old son or daughter? Many people are. Now I will admit that this is a national statistic. That can't be right here, not in Douglas county one of the wealthiest counties in America. Well again I must admit I don't know what the average age is here.

But let me ask you another question. How many children do you think are homeless in the Douglas county school district? Although I do not the exact current number I know that in talking with my friend who is the Homeless Student Liaison for the Douglas county school district that in late fall of 2011 she was serving 570 students that were homeless. And yes that is right here in Highlands Ranch. We are not isolated from this epidemic.

If you can help you can go our website:

www.haatforcesouthmetro.org

You can make a donation online or volunteer to help.

Thank you, Peter Reif, H.A.A.T. Force



Thanks to everyone for their support of the Burrito Breakfast to benefit our Guatemala mission. We raised over \$2700 and are getting close to our financial goals for the cinder block school!



Over the holidays, the **Itch to Stitch** stitchers donated dozens of handmade baby blankets and hats to Mommy Rocks, Bridgeway, and Warren Village, and handmade hats to teens at St. Paul and Kaps for Kindall.

Thanks to the Care Squares Angels, we don't know who you are but your squares are going into laprobes for the Vets Hospital. The Free Care Square Kits can be found in a basket near the sink in the Narthex. More info: Fran West - 303-797-7107

For the Moment

An Epiphany Devotion by Valerie Clark

*Oh, how sweet the light of day,
And how wonderful to live in the sunshine!*

*Even if you live a long time,
don't take a single day for granted.*

Take delight in each light-filled hour.

—Ecclesiastes 11:7-8a (The Message)

Snowflakes fall heavily, muting all sounds coming to the ear, lending a peace to the landscape creating a silent night and a holy one. Rabbit tracks dot the snow like colons at the end of a sentence. Dog walkers bundled against the cold shuffle through the new fallen snow. But, do they look skyward to feel the feather touch of snowflakes landing on the eyebrows? Nary a glance do they make to pause and feel God's presence in the gift of sustenance for the land or soul.

Even during the dreariness of a gray day one can hear the call of geese making their migration continuing the cycle of life. An optimistic birdsong fills the air with its wondrous notes as a lark seems to sing heralding spring on the Winter Solstice. Oh what wonders surround us as we close our eyes to it seeing only the mud and slush in the street.

The storm breaks and the stars are so bright against a black velvet sky. The temperature falls and the moisture in the air crystallizes forming dancing stars caught in the streetlight blown hither and yon at the whims of the wind. Snow squeaks as the footfalls go along the path sending a symphony of sound skyward.

The sky lightens to the east harbinger to the dawn of a new day as the clear, clean, crisp air longs for deep breaths clearing the lungs of yesterday's detritus. Icicles catch the morning sun throwing a kaleidoscope of rainbows against a wall. The landscape has a picture postcard patina as the new fallen snow sparkles from the branches of evergreens. Oh how wondrous is the beauty around us that we don't see. So wrapped up in self, we look but don't see; we hear but don't listen—we forget to be in the moment of God's wondrous creation.

So focused on our troubles we lose sight in finding peace in the laughter of a child, a greeting from a friend, or the smell of fresh baked bread. We have great expectations that are not met bringing disappointment and anger. How foolish we are... peace surrounds us if only we acknowledge God's work around us. We forget to live in the moment and the lesson from Matthew 6:34 from The Message: ***Give your entire attention to what God is doing right now, and don't get worked up about what may or may not happen tomorrow. God will help you deal with whatever hard things come up when the time comes.***



James Ramsey
Director of Music
& Arts Ministries



Kenrick Mervine
Associate Dir. of
Music Ministry/
Organist



Jennifer Ferguson
Associate Director
of Music Ministry



Kay Coryell
Dir. of Handbells
& Children's Music
Ministry



Jenna Wilcox
Director of
Drama Ministry

Play a musical instrument? Join St. Luke's Wind Ensemble!

St. Luke's is very blessed to have its very own wind band, open to participants of all ages and abilities. The Wind Ensemble plays fun and classic wind band music from January through April. It's great fun for the whole family! Rehearsals are Saturday mornings at St. Luke's from 8:45-9:30am. If you or someone you know might be interested in joining us for this family-friendly activity, please contact Jennifer Ferguson at jennifer@stlukeshr.com.

Thank you for Cantata Sunday!

The Music Ministry team at St. Luke's would like to thank the countless participants who made Cantata Sunday possible. The Cantata, held on December 11, 2011 was so much fun and a huge success! We had participation from well over 100 singers, orchestral instruments, and bell players. Without the steadfast participation from so many in the St. Luke's community, special events like Cantata Sunday wouldn't be possible. Great job everyone!

Thrift Store Now Has Name

The Love INC thrift store is now the LINC Community Thrift Shop. The winning entry (35 total entries) for the thrift shop came from the team of Kara Fong and Bennett McIntosh, and they'll receive a prize package of "dinner and a show". Congratulations and thanks to Kara and Bennett! Pictured is a rendering of a possible logo.

Progress on the thrift store project has been picking up speed the last two months. Of the \$30,000 we

need to raise to open and sustain the thrift shop for 6 months, \$18,000 has already been donated. We're over half way there! We have a core group of dedicated individuals working hard to make this become a reality for Love INC – but there are still opportunities to get in on the action! One of these opportunities is involvement with a "specialty sales team" – if you have an interest or experience with eBay and/or Craigs' list – we need you! We are also looking for a web master for the soon-to-come LINC Community Thrift Shop website.

We anticipate a second quarter of 2012 opening for the store – and are already accepting donations of gently used clothing and household goods. A forty foot (40') semitrailer has recently been loaned to the project for "mobile sales" to be held at Love INC partner churches. If you know of a place we can park the semitrailer between sales, please reach out to Jerry Hertzler at jmhertzler@comcast.net, 720-480-0476 or Nita Dunn at dunnheim@msn.com, 303-886-0381.

Visit our webpage www.loveincittleton.org/thriftshop.html or follow us on twitter at @LINC_Thrift.



**Linking
People to
Quality Resources**

A LOVE IN THE NAME OF CHRIST RESOURCE



Upcoming Events!

- ★ **Sunday February 12:**
The Importance of YOU!
- ★ **Sunday February 19:**
Mardi Gras Party:
Getting ready for LENT
- ★ **Tuesday February 21:**
Fat Tuesday Pancake Dinner
- ★ **Sunday February 26:**
Pool PARTY with SLY, JR.!
- ★ **Check www.stlukeshr.com/sly**
for up-to-date info on programs,
activities, ministry opportunities
and more!

Join Us!

Sundays:

SLY AM - 9:30am

WITY - 11:00am

CONFIRMATION -

11:00-1:00pm

SLYJO Band - 3:30pm

Soul Purpose Choir -
4:30pm

Youth Dinner (check
calendar) - 5:30pm (\$2)

SLY PM - 6:00-7:30pm

Wednesdays:

Homework Hour -

5:00-6:00pm

SLY WED -

6:00-8:00pm

HELLO FROM BELOW

Well, hello from 2012! It's been awhile since we've checked in and the past couple months have been busy!

We wrapped up December with our traditional holiday events and then jumped right into the new year with other churches in our area. Our first two events of the new year were district events where we gather with other local United Methodist youth groups. St. Andrew UMC hosted us all at their church for an evening of karaoke and games. The following week we cruised over to Littleton UMC for their annual dance—this year's dance was a decades dance. It was great getting to see our youth let their true colors shine and getting some time to mingle with young people from other communities of faith.



the collection into a fun competition- challenging each grade to see who could bring in the most non-perishable food items by the day of the big game. We'll see who ends up victorious and let you know next month!

Hope you all are doing well! *Until next month, Erin*



Fat Tuesday Pancakes! Save the Date - Feb. 21!

Coming up in a few weeks we will be having our annual **Fat Tuesday Pancake Dinner**. Join us on **Tuesday, Feb. 21** from **5:30 to 7:00pm** for pancakes, crafts, games and more. All proceeds from the meal go towards our summer youth mission trips. We hope you all will be able to come feast with us before Lent.



Erin Laurvick
Interim Director of
Youth Ministry



Susan Johnson
Assistant Director
of Youth Ministry

Martin Luther King, Jr. holiday weekend we headed for the mountains. The 'Beautiful & Different' Winter Retreat took us to Snow Mountain Ranch for ice skating, snow tubing and a horse drawn sleigh ride under the stars. It was a wonderful weekend full of fun and fellowship. It's always nice to get away together for some recreation and rejuvenation.

The last couple weeks of January our Sunday morning classes collected canned food for DenUM's annual "Soup-er Bowl". We turned

Welcoming our newest members

of St. Luke's and their reasons for joining our community.

All are welcome into the community of St. Luke's

Should you be ready to take the next step and become members, here are the simple steps:

- Please fill out the New Member Card located in our friendship pad and/or at the Get Connected Center.
- Then you may simply hand the card to one of our Pastors or Lynda Fickling our Director of Servant Ministry. She will then need to meet for a few minutes to go over the New Member Packet and have your picture taken.

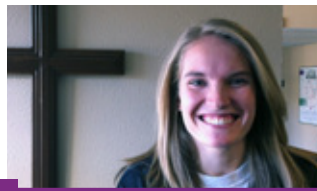
We look forward to you becoming a member of our family!

Contact Lynda Fickling for more info x20 lynda@stlukeshr.com
for more information or go to www.stlukeshr.com/p_join.asp

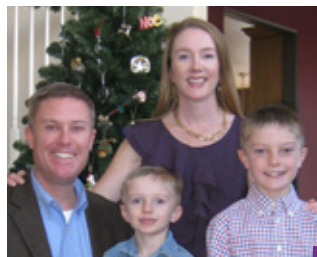
Natalie Betts (no pic)

"I have gone here since I was a baby but I couldn't do confirmation here, so I did it at St. Andrew and now transferring membership."

Lawrence & Rosemary Foote (no pic)



Kayla Boos



Mary Nell Jones

"Love the music & people."



Russ Overman

Robin & Lara Glynn

"St. Luke's feels like home."



Join us for Coffee & Conversation

about the History of St. Luke's, the United Methodist Church, our programs and ministries.
9:30am March 11 in Rm 213. All are Welcome!



Dave Cupp
Director of Finance



Lisé Takayama
Assistant Director
of Finance

Thank You For Your Continued Financial Support. We are off to a good start for the new year. Indications from the Stewardship Campaign indicates strong support for the planned financial program in 2012. It should be a great year.

Free King Soopers Grocery Cards Available at Grocery Card Table. *Yep—FREE.* If you are a King's shopper and do not currently participate in our grocery card program, it's easy to get started. Just stop by the grocery card table on Sunday mornings and pick-up your free Kings Soopers \$5.00 reloadable gift card. St.

The grocery card rebates contribute approximately \$12,000 to our general budget each year.

Luke's will receive a 5% rebate for every purchase you do with this reloadable card. You can load the card at Kings with any dollar amount you need and as often as you like by going to the Kings service desk or at the cashier using cash, check or your regular credit card. What

a great way to build up points on your credit card.

The grocery card rebates from Kings, Safeway and Tony's contribute approximately \$12,000 to our general budget each year. This is a considerable amount that can grow significantly if more of our members and constituents will use the Kings reloadable cards that you obtain at our grocery card table. Give it a try.

Pick and Choose Your Method Of Giving to SLUMC. We have many ways for you to make your giving to SLUMC easy and convenient. You may want to consider one of these convenient methods for your contributions. In addition to cash and checks, we offer online credit card transactions, stock transfers and scheduled automatic withdrawals from checking or credit card accounts. The following is a general summary:

- 1. General Fund and Capital Campaign:** All methods.
- 2. Grocery Cards:** Cash, check, scheduled eft from checking accounts.
- 3. Special Events:** Depending on the type of event may include cash, check, PayPal and online credit card transactions.
- 4. Plus:** We'd consider any reasonable method you know about that we haven't adopted.

Christmas continued from page 1

My Christmas traditions seem a little trite when I consider the ways that I could spend the celebration of the birth of Jesus. Although I don't plan to be in Denver next year to go with you to Christmas in the Park, I do feel that my Christmas Day will forever need to include some dedicated time to giving gifts to those that are truly in need. Thank you St. Luke's for opening my eyes and my heart to the Christmas Present and for supporting this mission. I hope to read about your generosity next year. Christmas in the Park is just one of the many ways that AfterHours Denver ministers to the people of Denver, including the homeless. Rev. Jerry Herships has been called to serve the first United Methodist Church without walls here in the Denver Metro area. Through the support of generous people he serves lunch six days a week to hungry people. St. Luke's packs lunches for Rev. Jerry to share during their Fusion services every week. If you would like more information on worship opportunities with AfterHours Denver email jerry@afterhoursdenver.org or visit www.afterhoursdenver.org.



Seasoned Voyagers are travelling to the Denver Art Museum

by Joyce Rovetta & Ann Roadarmel

Seasoned Voyagers are booking for another trip in our church bus Wednesday, February 15, 9:30am to the Denver Art Museum. Two buildings totaling 350,000 square feet display many exciting permanent collections. The older "Castle" complete with slots for shooting arrows out was designed by Italian architect Gio Ponti built in 1971 and the new building, a collision of titanium "mountains" designed by Polish-American architect Daniel Libeskind opened in 2006. The buildings themselves are works of art and we will be guided for a one and one-half hour tour of their highlights.



Denver Art Museum holds a premiere Pre Columbian collection of Aztec, Incan and other early Indian arts, as well as a spectacular Spanish Colonial collection. The Native America Arts floor, recently remodeled brings modern information to these traditional works. In the Western American Artists exhibit, we will have time to view paintings and sculpture of Remington and Russell, Bierstad's mountains, George Catlin's Indian portraits and Charles Deas' "Rocky Mountain Man" as well as interpretations of Western grasslands, skies and Taos artists works.

The tour, museum admission and transportation are only \$8. Sign up and tickets will be available at the Seasoned Voyagers table on Sunday mornings, until the bus is full. There will be time for lunch and to stroll by the Denver Public Library or the Clifford Still Museum of modern art, all in this central location. Mad Greens is one of several reasonable restaurants.

The Seasoned Voyagers has been very successful in developing St. Luke's 50+ Ministry. We are continuing to grow and want to invite anyone interested in helping this new ministry flourish.



We have established several monthly ongoing group such as **Conversations with Rev. Janet** on the 1st Tuesday of the month at 2:00pm in her office, **Game Day** on the 2nd Tuesday of the month at 1:00pm downstairs in the Youth Room, and **Movie Day** on the 3rd Tuesday of the Month at noon or thereabouts at local theaters and **Cultural Lunches** held on a quarterly basis with the next being a Cinco de Mayo celebration the beginning of May.

On March 3 at 1:00pm there will be a program on **Housing Options for Seniors** and will be held in Fellowship Hall. Our speaker will be Meghan Saylor, a professional working with Seniors and their housing needs. She has had 2 grandparents struggle with finding alternative housing and saw the pitfalls that families and their loved ones run into. Information provided will be of a general nature regarding financial and housing alternatives in the Denver Metro Area. This program is open to adults, any age, and seniors and their adult children. Housing alternatives for loved ones, whether they are family or friends or neighbors, is a big issue and can be fraught with many pitfalls. Come learn how to navigate the waters of senior housing. Lunch will be provided.

We have established an active mission program organized by Betsy Keyack and we are looking for assistance in the area of Communications, Secretary/Historian, and Program Coordinator. You do not have to be 50+. Please contact Ann Roadarmel at alroadarmel@gmail.com or call her at 303-792-5110.



St. Luke's United Methodist Church
8817 S. Broadway • Highlands Ranch, CO 80129
303-791-0659 • www.stlukeshr.com

*St. Luke's United Methodist Church welcomes you to our Christian family,
where we share life. Wherever you are in your faith journey,
you are accepted and encouraged to grow spiritually.*

*Join us in growing together toward full humanity through living
the teachings of Jesus: Love, Acceptance, Justice and Hope.*

FEBRUARY 2012						
Sunday	Monday	Tuesday	Wednesday	Thursday	Friday	Saturday
5 8:00, 9:30, 11:00am: Worship –Angie Steinhauer 11:00am: Bible at a Glance/Micah Series 4:30pm: SLY PM “Soup-er Bowl” 5:30pm: Youth Dinner (\$2) 6:34pm: Fusion	6 6:30pm: Women's Night Out	7 2:00pm: Conversations with Janet 6:00pm: Joy Trek Craft Prep Night	8 1:00pm: Seasoned Voyagers 5:30pm: SLY Homework Hour 6:30pm: SLY Wednesday	9 noon: Lunch & Learn 6:00pm: Servant By Design 6:00pm: Love & Logic Parenting Class 6:30pm: Contemplative Fellowship	10 5:45pm: Parent's Night Out	11 10:00am: Genealogy 101 6:30pm: Love INC Benefit Concert 6:45pm: Bridge Club
12 8:00, 9:30, 11:00am: Worship –Rev. Dr. Janet Forbes 11:00am: Bible at a Glance/Micah Series noon: UMW Meeting 12:15pm: Common Table 4:00pm: Introduction to Spiritual Direction 5:30pm: Youth Dinner (\$2) 5:30pm: SLY, Jr. 6:00pm: SLY PM 6:34pm: Fusion	13 7:00pm: Trustees Meeting	14 Valentine's Day 1:00pm Seasoned Voyagers Game Day 6:30pm: Finance Team 7:00pm: Missions Team	15 9:30am Seasoned Voyagers Trip to Denver Art Museum 5:30pm: SLY Homework Hour 6:30pm: SLY Wednesday 6:30pm: Parents of Teens/Young Adults with Depression/Bipolar 7:00pm: Itch to Stitch	16 noon: Lunch & Learn 6:00pm: Love & Logic Parenting Class 6:30pm: Contemplative Fellowship	17 9:30am: Playgroup  6:45pm: Family Movie Night	18 10:00am: Wesley Writers
19 8:00, 9:30, 11:00am: Worship –Rev. Bradley Laurvick 8:15am: Contemplative Worship 11:00am: Bible at a Glance 11:00am: Micah Series 12:15pm: Learning w/St. Luke's Team Mtg. 5:30pm: Youth Dinner (\$2) 6:00pm: SLY PM 6:34pm: Fusion	20 President's Day Little School & Church CLOSED	21 Fat Tuesday Seasoned Voyagers Movie Day 5:30pm: FAT TUESDAY Pancake Dinner 7:30pm: Planned Giving Team Meeting	22  Ash Wednesday 5:30pm: SLY Homework Hour 6:30pm: SLY Wednesday 7:00pm: Ash Wed. Service	23 noon: Lunch & Learn 6:00pm: Love & Logic Parenting Class 6:30pm: Contemplative Fellowship	24	25
26 8:00, 9:30, 11:00am: Worship –Rev. Dr. Janet Forbes 11:00am: Bible at a Glance 11:00am: Micah Series 3:00pm: Boulder Philharmonic 5:30pm: Youth Dinner (\$2) 5:30pm: SLY, Jr. 6:00pm: SLY PM 6:34pm: Fusion 	27 6:00pm: Women's Evening Bible Study	28 7:00am: Men's Group © Egg & I 6:30pm: CMT Meeting 7:30pm: Staff Parish Relations Team Mtg.	29 5:30pm: SLY Homework Hour 6:30pm: SLY Wednesday	MAR 1 noon: Lunch & Learn 6:00pm: Love & Logic Parenting Class 6:30pm: Contemplative Fellowship	2 9:30am: Playgroup	3 8:30am: Simply Saturday 1:00pm: Senior Housing Options Program
4 8:00, 9:30, 11:00am: Worship –Rev. Dr. Janet Forbes 11:00am: Bible at a Glance 11:00am: Micah Series 5:00pm: Short-term Lenten Study 5:30pm: Youth Dinner (\$2) 5:30pm: SLY, Jr. 6:00pm: SLY PM 6:34pm: Fusion	5 6:30pm: Women's Night Out	6 2:00pm: Conversations with Janet  6:30pm: Spirituality & Wellness Series	7 5:30pm: SLY Homework Hour 6:30pm: SLY Wednesday 6:30pm: Parents of Teens/Young Adults with Depression/Bipolar	8 noon: Lunch & Learn: 6:30pm: Contemplative Fellowship	9 5:45pm: Parent's Night Out 7:00pm: MUSICAL “She Loves Me” 	10 10:00am: Genealogy 101 6:45pm: Bridge Club 2:00 & 7:00pm: MUSICAL “She Loves Me” 5:30pm: Benefit Dinner