



The Chronicle

ST. LUKE'S UNITED METHODIST CHURCH

JUNE/JULY 2012

Inside This Issue:

From Rev. Janet.....	2
From Rev. Sallie.....	3
Welcome Amy.....	3
Children's Ministry.....	6
Missions.....	7
SLY Ministry.....	10
Graduates.....	11

and much more!

Come to a Star Party!

Rich Krening, St. Luke's stargazer and astronomer, is setting his telescope in Southbridge Park for a viewing of the stars and planets on Friday evening, June 29, at 9:00pm at Southbridge Park in Littleton.

Rich and Rev. Janet Forbes have been hoping for a clear night sky this summer when several of the views are particularly fine!

Children are welcome! Bring a thermos of a hot beverage. Dress warmly!

Check the website for confirmation/cancellation of the Star Party as Rich will check the clarity of the sky in the early evening.

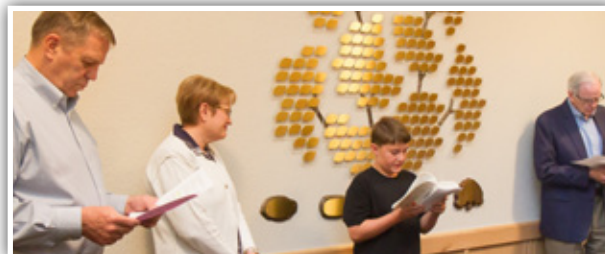
Rich has been sharing his hobby with Disciple Bible Study classes for several years and enhanced our understanding of God, the creator. God is the Maker of the Bear and Orion, the Pleiades and the constellations of the south.

Directions to Southbridge Park: From St. Luke's, turn left out onto S. Broadway. Travel north to W. Mineral Avenue about 1.5 miles. Left onto Mineral. Go about 1 mile. Turn right on S. Windermere Street. Park is .1 mile on the left.

Tree of Life Dedicated

The new Tree of Life donor recognition tree located in the Chapel hallway was dedicated between worship services on May 20. This new tree is one of the ways the Planned Giving Team uses to appropriately recognize donors for various levels of giving to the planned giving program. As a part of the dedication service we were able to place four names on the tree recognizing gifts made in their memory:

- **John Kenneth "Kenny" Sharpe**
by Family and Friends
- **Daniel William "Bill" Dearasaugh, Jr.**
by Family and Friends
- **Robert Ray "Bob" Worth** by Family and Friends
- **Virgil Jean Clark & Floyd H. "Casey" Clark**
by Their Daughter Val Clark



Recognition on the tree is given based as follows:

Giving Level	Recognition
\$1,000-4,999.....	Engraved Leaf on tree
\$5,000-9,999.....	Acorn under or near the tree
\$10,000-24,999.....	Stone under or near the tree
\$25,000-49,999.....	Miniature tree placed near the main tree
\$50,000 or greater....	Recognition deemed appropriate

continued on page 3

St. Luke's PAA Band & String Camps

4th-10th Grades
2012-2013 school year

- Group Lesson •
- Ensemble Rehearsal •
- Instrumental Technique •
- Basic Music Theory •
- Improvisation •
- Jam Sessions •

WEEK ONE: July 9-13

Beginning Band Camp:

4th, 5th and 6th Grade
9:00am-noon

Intermediate Band Camp:

6th, 7th & 8th Grade
1:00-4:00pm

Beginning String Camp:

4th, 5th & 6th Grade
9:00am-noon

WEEK TWO: July 16-20

PAA School of Rock Camp:

5th-10th Grade
9:00am-noon

Intermediate String Camp:

7th, 8th & 9th Grade
1:00-4:00pm

St. Luke's PAA Summer Camp



Pre-K (3yrs-potty trained)
-1st Grade

July 23-July 27

Morning Session

9:30am-12:30pm,

Afternoon Session

1:30-4:30pm

Learn acting basics,
beginning theater dance
and arts & crafts.
Our week will culminate
in a Shareformance!

Margaret Wise Brown's long adored stories come alive in a week long camp filled with pretend play, singing, dancing and crafts. You will find who lives in the **Big Red Barn**, catch **The Runaway Bunny** and learn what it means to rest in **A Child's Good Night Book**. Don't miss the fun!

Garden Ministry



Volunteer to help with the Garden Ministry! Go to our website:

www.stlukeshr.com and click Garden Ministry signup and click on the "I'll Help!" icon for a date that you can help.

Job Descriptions:

Preparation/Planting: Work with a small team to plan, prepare site, and plant (variable time commitment).

Weeding/Watering: Weed garden area, prune and thin plants, and water if necessary (1 hour commitment).

Harvesting/Delivery: Harvest produce and deliver to beneficiary (2-4 hour commitment).

Composting: Collect materials and compost (1-2 hour commitment).

For more information, email Tom Suby-Long
tsubylong@comcast.net

Register NOW! www.stlukespaa.org

Sunday Worship Services:

8:00am, 9:30am, 11:00am

6:34pm: Fusion

Contemplative Services also offered
(Check website for dates and times)**Sunday School:**

Adult, Youth & Children:

9:30am & 11:00am

Nursery available for:

8:00, 9:30 & 11:00am services

Church Office.....303-791-0659

Fax.....303-470-5615

Email.....office@stlukeshr.com

Website.....www.stlukeshr.com

Preschool Office.....303-791-1982**Staff:****Rev. Dr. Janet Forbes.....x13**
Senior Minister Emergency: 303-241-9312**Rev. Sallie Suby-Long.....x32**
Associate Minister Emergency: 303-475-014**Rev. Ryan Canaday.....x12**
Associate Minister**Sharon Oliver.....x27**
Director of Children's Ministry**Dawn Johnson.....x11**
Assistant Director of Children's Ministry**Samantha Leahy.....x40**
Director of Childcare**Dave Laurvick.....x14**
Director of Youth Ministry**Amy McMullen.....x14**
Assistant Director of Youth Ministry**Kay Swanson.....303-791-1982**
Director of Little School**Dr. James Ramsey.....x23**
Director of Music & Arts Ministries**Kenrick Mervine.....x33**
Associate Director of Music Ministry & Organist**Jennifer Ferguson.....x37**
Associate Director of Music Ministry**Kay Coryell.....x36**
Director of Handbells & Children's Music Ministry**Ernie Rodgers.....x44**
Fusion Worship Leader**Carrie Mallory.....x35**
Assistant Fusion Worship Leader**Jenna Wilcox.....x22**
Director of Drama Ministry**Brenda Schafer.....x10**
Office Administrator**Dave Cupp.....x24**
Director of Finance**Lisé Takayama.....x16**
Assistant Director of Finance**Lynda Fickling.....x20**
Director of Servant Ministry/Spiritual Director**Barry Curtis.....x39**
Facilities Manager

All submissions for the
August 2012 issue
of *The Chronicle* are due **July 20**
Editor: Sharon Oliver
chronicle@stlukeshr.com

The Chronicle prints 10 times per year and
is emailed to those on our email blast list,
and it can be found on the church website.

Printed copies are available at church
entrances. To receive *The Chronicle* via US
mail, please call or email the Church Office.



Rev. Janet Forbes
Senior Pastor

Let Your Life Speak!

Let your life speak! This old Quaker saying invites a listening to and setting free of the deepest voices of vocation, passion, and calling within each of us. It is a gift of the Spirit.

When Jesus let go of his last breath – willingly, we believe, for love of us – that breath

hovered in the air in front of him for a moment and then it was set loose on earth.

It was such a pungent breath – so full of passion, so full of life – that it did not simply dissipate as so many breaths do. It grew, in strength and in volume, until it was a mighty wind, which God sent spinning through an upper room in Jerusalem on the day of Pentecost.

God wanted to make sure that Jesus' friends were the inheritors of Jesus' breath, and it worked.

There they were, about a hundred and twenty of them, the Bible says in Luke 2, all moping around wondering what they were going to do without Jesus, when they heard a holy hurricane headed their way.

Before any of them could defend themselves, that mighty wind had blown through the entire house, striking sparks that burst into flames above their heads, and they were filled up with it – every one of them was filled to the gills with God's own breath.

Then something clamped down on them and the air came out of them in languages they did not even know they knew.

Like a room full of bagpipes all going at once, they set up such a racket that they drew a crowd. People from all over the world who were in Jerusalem for the festival of Pentecost came leaning in the windows and pushing through the doors, surprised to hear someone speaking their own language so far from home.

Parthians stuck their heads through the door expecting to see other Parthians, and Medes looked around for other Medes, but what they saw instead were a bunch of Galileans – rural types from northern Israel dressed in the equivalent of first-century overalls – all of them going on and on about God's mighty acts like a bunch of Ph.D.'s in middle eastern languages.

Do we still believe in a God with power to transform us...

Before the day was over, the church had grown from one hundred twenty to more than three thousand.

Shy people had become bold, scared people had become gutsy, and lost people had found a sure sense of direction. Disciples who had not believed themselves capable of tying their own sandals without Jesus discovered abilities within themselves they never knew they had.

When they opened their mouths to speak, they sounded like Jesus. When they laid their hands upon the sick, it was as if Jesus himself had touched them. In short order, they were doing things they had never seen anyone but him do, and there was no explanation for it, except that they had dared to inhale on the day of Pentecost. They had sucked in God's own breath and they had been transformed by it.

Do we still believe in a God who blows through closed doors and sets our hearts on fire? Do we still believe in a God with power to transform us, both as individuals and as a people, or have we come to an unspoken agreement that our God is pretty old and tired by now, someone to whom we may address our prayer requests but not anyone we really expect to change our lives?

I hope none of you rests until you have felt the Holy Spirit blow through your life, rearranging things, opening things up and maybe even setting your own head on fire.

There is nothing you can do to make it happen, as far as I know, expect to pray "Come, Holy Spirit", every chance you get.

If you don't want anything to change in your life, then for heaven's sake, don't pray that, but if you are the type of person who likes to stand out on the porch when there is a storm moving through so you can feel the power that is pushing the trees around, then you are probably a good candidate for the Holy Spirit prayer.

See you this summer for the Spirited invitation to **LET YOUR LIFE SPEAK.**

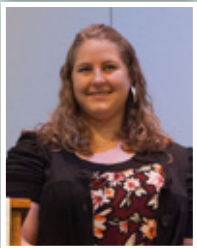
—Rev. Janet



from page 1 Memorial and honor gifts say you care. The Planned Giving Team at St. Luke's makes it possible for you to make these gifts by providing information, opportunities and administration for members and constituents to make provisions for giving these gifts through St. Luke's by means of wills, annuities, trusts, life insurance, memorials and various type of property.

There are currently eight different endowment funds established for you to designate as recipients of your gifts plus you can make arrangements for additional gift designations. These funds are explained in the Memorials and Honors Giving brochure and the gift envelope which are located in the brochure holders at the front entry. To make a gift, take one of the envelopes, fill out the information requested, place it in the offering plate or turn it in to the church office. Contact one of the Planned Giving Team members for additional information and guidance: Rich Spong, Randy Dunn, Mike Richards, Kory Nelson, Elena Lynch, Matt Henry, Bob West, Eric Ransick, Rev. Janet Forbes and Dave Cupp.

Welcome to Amy McMullen as Assistant Director of Youth Ministry



The Staff Parish Relationship Team is pleased to welcome Amy McMullen as our Assistant Director of Youth Ministry, beginning May 11, 2012.

Amy, who has served in multiple volunteer capacities with youth ministry, has attended St. Luke's United Methodist Church with her family since 1990. Amy grew up in the Sunday School and Youth Ministry in this congregation. She graduated with a Bachelor of

Arts in Psychology in 2011 with a minor in Nutrition. Much of her coursework focused on the psychology of youth. She plans to continue post-graduate studies in Clinical Psychology in 2013. As Assistant Director of Youth Ministry, this 20-hour part-time position will balance well with the pursuit of advanced studies.

Since 2008, Amy has been volunteering as an adult leader with the St. Luke's Youth Group. Her responsibilities have included providing leadership and support for the youth, monitoring their health and welfare, leading discussions, helping design activities, and serving as a confirmation leader.

In addition, Amy has participated in multiple mission trips with St. Luke's while in the youth group and, more recently, as an adult leader. Last year, she was responsible for the spiritual formation activities on the Detroit Senior High Mission and sponsored the Junior High Mission to Grand Junction. Currently, Amy is working as a part-time aide at Ranch View Middle School in Highlands Ranch.

Amy's excitement is palpable: *"I thoroughly enjoy guiding youth through life and faith. I look forward to adding my strengths in leadership, organization, compassion, and creativity to the great youth leadership team. I strive to be a good example for young people in living a faithful and compassionate life. I am honored to be part of the staff in this wonderful community of faith."*

Welcome, Amy!



Rev. Sallie Suby-Long
Associate Minister

Welcome to the Ministry of Spiritual Direction...

"Asking life-giving questions and companioning people as they look closely at the guidance and transforming work of God in their lives."

In the past several months our new ministry of Spiritual Direction has started at St. Luke's and the response has been remarkable! Some people say the best way to understand spiritual direction is to experience it. Those who have participated in this ministry know that Spiritual Directors help people to share their sacred stories and accompany others on their spiritual journeys. It is a process of addressing spiritual formation at a deeper level. Spiritual Direction is about being attentive to God's presence in all aspects of life. It is an ancient practice that is relevant for contemporary life.

Questions are the heart of Spiritual Direction.

Questions like "Who am I?" "How does God speak to me?" "Where do I belong?" and "What am I called to do and be?" do not have easy answers. Spiritual Direction affirms the questions and honors the importance of exploring these questions.

Our St. Luke's Spiritual Directors are trained to listen, to guide, to raise thoughtful questions and to create a welcoming and gracious space in which to explore some of life's most important questions. In an atmosphere of trust, individuals are supported in discerning life purpose, embracing new chapters of life and seeking life-giving perspectives.

Our St. Luke's Spiritual Directors have all completed in-depth training and certification in the practice of Spiritual Direction. The current team includes Lynda Fickling, Janet Johnston, Leigh Ramsey, Jenita Rhodes, and Sallie Suby-Long. All are available to talk with you further about this specialized ministry. (See below about Janet Johnston's recent completion of Spiritual Direction Certification!)

This Fall, our Spiritual Directors will offer both individual and group spiritual direction opportunities. Contact Pastor Sallie for more information or watch for more details in future St. Luke's publications.

Pastor Sallie

303-475-0141 sallie@stlukeshr.com

TRUSTEES CORNER

Busy Times! First, our thanks to all who turned out for our last very soggy Work Day! We have such a terrific team of volunteers! We are blessed!

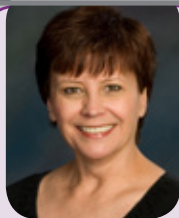
Next up, painting – out with the old and in with the new! Several of our offices are getting a bit of a face-lift as we welcome Rev. Ryan, and do a bit of a shuffle with our staff offices. Come visit the new Children's Ministry office for Sharon, Dawn and Sam right by the main stairway (Rev. Brad's old office.)

Save the Date! July 28, 8:00am-noon is our next Work Day it's sure to be much drier. We'll plan to pick up where we left off in the May downpour! We can use your help – you're all invited to join us!



Janet Johnston Completed Spiritual Direction Certification in April, 2012.

Congratulations, Janet! May God continue to bless you as you offer your gifts as a Spiritual Director.



Lynda Fickling
Director of
Servant Ministry/
Spiritual Director

We are Called to Serve

"It is not how much you do but how much love you put into the action." – Mother Theresa

Looking to Get Connected at St. Luke's?

Make sure we have your email!

Visit www.stlukeshr.com, quick link, email lists and sign up today!

Pick up or download our Catalog of Ministries – we have many programs, classes, groups for you to be a part of. All are welcome! Visit stlukeshr.com, quick links, Catalog of Ministries.

Or please contact: Lynda Fickling, Director of Servant Ministry, 303-791-0659 x20 lynda@stlukeshr.com or Bruce Pawley, Lead for Lay Leadership, 303-471-8353 brucepawley@comcast.net and/or stop by our Get Connected Center.

DenUM (Denver Urban Ministries)

1717 E. Colfax, Denver. You may know it as our "Feeding of the 5,000" recipient but they are also a wonderful place to volunteer during the week. Here are a few positions available. If you are interested, contact Carolyne Schultz carolyne@denum.org 303-350-5066.

- **Intake Volunteer** Come join us on the "Front Line" of client services. Intake volunteers greet clients, assess their needs, input information into the DenUM database, and provide resources to clients.
- **Personal Shoppers** We are changing our system from handing our clients food bags to helping them select the food their family is in need of!

Spiritual Gifts: Mercy, Helps, Hospitality, Administration, Faith

Grocery Certificate Team: Help sell our grocery certificates on Sunday mornings. It's a wonderful way to meet and welcome others at St. Luke's. Every time people purchase the certificates, a donation is made by one of the local grocery stores to St. Luke's. Members generally work one Sunday per month selling certificates between services. *Spiritual Gifts:* Helps, Giving, Leadership Contact: Paula Severseike 720-519-1194 seikes@comcast.net or Marilyn Bacon 303-791-7649 jamesnmarilyn@msn.com

***NEW: Welcome Team:** Do you enjoy getting to know people, listening to their stories, help them feel like St. Luke's is their home? If you have a passion for people and are excited to start new programs, contact Lynda Fickling our Director of Servant Ministry for more information! *Spiritual Gifts:* Encouragement, Discernment, Hospitality, Administration, Helps, Service Contact: Lynda Fickling Lynda@stlukeshr.com or x20

Take the Spiritual Gifts Assessment to discover your unique gifts God has chosen for you to serve in this world. <http://stlukeshr.com/SpiritualGifts/>



Brenda Schafer
Office Administrator

PRAYER CONCERNS

Please stop by the Information Center, by the front door, where you will find the complete and updated Prayer Concerns list or view the listing on our website. Contact Rev. Sallie Suby-Long or Brenda Schafer if you have any additions/removals. 303-791-0659 x32, leave a note on the front desk, or email sallie@stlukeshr.com or brenda@stlukeshr.com

LATEST ENTRIES TO PRAYER LIST:

Haven Anderson - Little School family
Linda Young
Stanleigh Chism - Val Clark's friend
Jill Wright
Lee Rozinski
Jaime Fretz - Bob & Peggy Fretz's daughter
Ken Berry - Jan & Charlie Rufien's friend
Lena Line
Nita Dunn
Wing Fong - Kerry Lucero's friend
Fran West
Jan Goehring
Sally Brush - Sylvia Brady's friend
Alberta Haas
Wally Sackett
Tommy Carlisle - Fred & Gail Strawn's friend
August Lang
Chuck Stophel - Carol Gill's friend
Carol Carnahan
Joey Cavanaugh
Kimberly Klug - Linda Young's daughter
Kay Vandenberg
Marla Dillsaver
Dennis Bell - Val Clark's friend
Louise McGill - Sharon Oliver's mother
Frank James - Kathy Swier's uncle

John Dunbar
Janet Sisk - Don Enger's sister
Andrew Dewey - Katy Swier's relative
Richard Swier - Kathy Swier's father-in-law
Kate Crespo
Matt Kaufman - Metzger's family friend
Huxley Wilcox - Bret & Jenna Wilcox's nephew
Rich Nelson
Amy Hertling-Johnson

SYMPATHIES TO:

Alicia Nelson on the passing of her mother, Reta Janet Shreves
Brad & Erin Klein on the passing of Brad's grandfather, Buddy Klein
Bob & Fran West on the passing of Fran's sister, Alice Lewis
Dog & Peg Pascal on the passing of their daughter, Barbara Haverfield
Val Clark on the passing of her friend, Wayne Schoenwald

CONGRATULATIONS TO:

Bob & Fran West on the birth of their grandson, Cullen Craig Bergmeier
Ken & Barbara Mervine on the birth of their granddaughter, Annabelle Lynn Edwards



Homelessness Awareness/Action Task Force: South Metro
"Addressing the Unaddressed"

H.A.A.T. Force is investigating the feasibility of opening a Day Shelter in Englewood. I will keep everyone informed as to our progress.

Patricia's Birthday Celebration Benefits H.A.A.T. Force

On April 15th, Patricia Westlake celebrated her 70th birthday and requested that in lieu of presents, donations should benefit H.A.A.T. Force. I am pleased to announce that \$1,000 was donated. And 580 cold weather items were collected. Thank you Patricia!

—Peter Reif, H.A.A.T. Force

It Takes a Village Bike Drive Well it's that time of year again! I will be collecting bikes for It Takes a Village. These bikes are used to provide basis transportation for individuals being released from prison. Often these individuals have no transportation options at all.

I will be accepting bikes from June 18 until July 31. Please call me to arrange a time for drop off. I can be reached at 303-263-7225. —Peter Reif

More from Les: Passages

by Rev. Les Ludlam, St. Luke's Lay Associate Pastor 1993-1997

Imagine if you will, that you're holding up a photograph of someone or some place familiar to you. This photo, you discover, is over 10 years old!

Look more closely; what changes have occurred since the photo was taken? Has a child grown tall? Has an adult's has become grayer or thinner? Has a home changed? Can you even count the changes you see?

The only certain thing about our physical existence is that everything changes in due time. We change, the human and physical world around us changes, only God remains constant.

Change is an inescapable part of life.

We know from personal experience that anything held constant is vulnerable to deterioration. If we try to hold things as they were yesterday, changes occur without us.

It's dismaying to think that just when we get to feeling comfortable, we get lax and loose some things we may have struggled hard to gain. Athletes and singers know this very well.

Taking time off from the regimen of practice immediately leads to slackening of the muscles and loss of conditioning. Getting back to top form requires a strict regimen of exercise and practice.

Change is also an unpredictable part of life.

Change can come gradually or it can spring upon us suddenly.

Jesus brought many abrupt changes in the lives of those who were touched by him. Peter and Andrew, for all we know, were making a decent living as fishermen. Mathew and Mark tell us that simple call to follow Jesus led to a complete change in lifestyle and orientation! They dropped everything and "went on the road" with him.

Paul was prominent among his contemporaries in the Jewish faith early in his ecclesial career. He might have eventually become a rabbi. But his life was dramatically changed on the road to Damascus and under Ananias' care. He became as strong an advocate for Jesus as anyone of his time.

The experiences of the followers of Jesus give us a clue about how God touches us and leads us as we attempt to deal with the significant changes in our own lives. I call these changes, good or bad, "passages."

In a passage, we experience a significant life change as we move from one world-view and set of assumptions, to something new, perhaps totally different from that which we have grown comfortable.

We can respond to these passages in two ways: (1) We can worry about the consequences and try to resist the changes or (2) we can think of what action we can take to make the best of the situation.

How we respond is important and the key to any response is our belief that "this is what God wants me to do."

So how do we know how God wants us to respond to those passages in our lives? I particularly like the thoughts in a little book written by Rev. Leslie Weatherhead, "The Will of God." He suggests that there are "signposts" which give us some direction to ascertain God's will. Conscience, for all its susceptibility to prejudice and group pressures, remains that still small voice that says, "this is right" or "this is wrong."

And common sense, if we take the time to think things through, is another powerful tool. All it needs is patience and a mind open to new directions. Talking it over with a close, trusted friend can also prove to be a strong signpost. Pray with them.

Finally, the most powerful source of guidance to ascertain God's will sits in the pew racks next to you. The bible, of course!

As we make our day-to-day decisions on how to respond to the changes around us, we must ask ourselves, "Do I really want to discern God's will or do I want to get His sanction for my own will?"

And we must also ask, "Do I have the courage to do God's will once I have discerned it?" Then, go do something! Get on with life!

God bless us all! –Rev. Les



Dave Cupp
Director of Finance



Lisé Takayama
Assistant Director
of Finance

Free King Soopers Grocery Cards Available at Grocery Card Table. Yep—FREE.

If you are a King's shopper and do not currently participate in our

grocery card program, it's easy to get started. Just stop by the grocery card table on Sunday mornings and pick-up your free Kings Soopers \$5.00 reloadable gift card. St. Luke's will receive a 5% rebate for every purchase you do with this reloadable card. You can load the card at Kings with any dollar amount you need and as often as you like by going to the Kings service desk or at the cashier using cash, check or your regular credit card. What a great way to build up points on your credit card. The grocery card rebates from Kings, Safeway and Tony's contribute approximately \$12,000 to our general budget each year. This is a considerable amount that can grow significantly if more of our members and constituents will use the Kings reloadable cards that you obtain at our grocery card table. Give it a try.



Seasoned Voyagers August Outing

Save Sunday, August 12 for an outdoor picnic and evening of music at Roxborough State Park. The church

bus will leave the parking lot at 4:15pm to insure that we get good seating. We will need one participant with a pick up truck willing to carry our picnic baskets and folding chairs. The performing duo is Skanson and Hansen acoustical guitarists. They may be seen on You Tube. Try *Sunshine on My Shoulder* by Skanson and Hansen. For more information contact Joyce Rovetta 303-470-5705 and look for the sign up table on Sundays in July.

What is the Wesley Writers?

What: a small group who love to write and share yesterday's stories of life, love, and adventure, aka memoirs.

When: monthly, third Saturday at 10:00am

Where: Conference Room at St. Luke's UMC

Why: every life has its own story – stories to pass down from generation to generation, telling our descendants what life was like back in the good old days, who we are, and what went into the mix to create our uniqueness.

Who: leaders: Sue Luxa, Les Ludlam, Sylvia Brady

Consider this your special invitation to join us. Our theme for June is: Graduation Day or Class Reunions. In July we'll share Travel Experiences. Remember nothing is ever set in stone – well, maybe the 10 Commandments! Your choice: fact or fiction, prose or poetry or just show up and listen to the stories of others.



Jake's Take

Woof! Woof! Jake, Ms. Sharon's dog, here and I am so excited to tell you that our **Children's Dinner Theater "Fee, Fi, Fo, Fum!"** raised \$1,063.33 for the Garden

Ministry!! That's a new record for us and it helped pay for a new fence for the garden - go check it out! Wait - now I can't get in.... hmmmmmm.....

Don't forget to register your child for the new year of Sunday School!

We ask that parents *fill out a new registration form* each year for their children and now's the time. You can do it online at www.stlukeshr.com/children or grab a peach-colored form on Sunday mornings at the Superintendent's Station and fill out. Thanks so much!

What better way to spend a Sunday morning this summer than serving with our children! WE HAVE LOTS OF OPENINGS so pick the date that works for you. Go to www.stlukeshr.com/ children and click on the current schedule to take a look. Sign up to be a **Shepherd** (class assistant - we need lots of those), **Leader for Joy Trek**, **PEAK Workshop** (Art, Cinema, Cooking, Science, Games, Storytelling) or **Godly Play** (all curriculum provided), or a Greeter, Superintendent, Music Leader, or a Behind the Scenes or Special

Events helper Training provided. Contact us to sign up. We need YOU!

SLY, Jr. had an amazing time serving at DenUM on Sat. May 19 and then on June 3 we welcomed the new 5th graders and said goodbye to those moving on to 7th grade with a fun picnic! Contact sharon@stlukeshr.com for more info.

Doggie blessings!

Vacation Bible School

We are SOOO excited to welcome over 280 'divers' for VBS "Operation Overboard" June 25-29. Watch as the church is transformed into an underwater world and we learn what it means to dive deep into our faith!

**Our Evening Session
July 10-13
still has openings!
Sign up today!**

www.stlukeshr.com

\$30 per session. For all kids age 3 (as of 9/30/12)-entering 5th grade.

Wacky Wednesdays

The theme this year is:



Open to all children age 2 1/2 through 3rd grade!
(Must be independently potty-trained to attend.)

TIME:

9:30am-noon

WEDNESDAYS:

July 11, 18, 25

Registration is \$20/day per child.

Register NOW!

If you have any questions regarding registration contact: Tami Clement at ma3clement@aol.com

Registration forms available at the Little School/ Superintendent's Office and online: www.stlukeshr.com/children.



Sharon Oliver
Director of
Children's Ministry



Dawn Johnson
Asst. Director of
Children's Ministry



Samantha Leahy
Director of Childcare

St. Luke's Kids
Growing with God

fee, fi, fo, fum!



An Invite to Godly Play

Godly Play is our 11:00am Sunday School class for kids age 4 through sixth grade. It is an imaginative approach to working with children, an approach that supports, challenges, nourishes and guides their spiritual quest. In Godly Play children hear bible stories through parable, sacred liturgy and silence and participate in a craft or other activity to further explore the story. We are so pleased to be able to provide 2 Sunday School opportunities for our St. Luke's children - 9:30am is our Joy Trek (Preschool) and PEAK (K-4th) and Tweens (5th & 6th) classroom Sunday School experience downstairs and at 11:00am is Godly Play in the Chapel. Both are amazing and are very different so feel free to go to both on a Sunday morning or find the one that suits your children and schedule. So this summer, bring the kids to Godly Play and see what this incredible story telling presentation is all about.

Annual Directory

As we prepare for our annual distribution of St. Luke's guidebook/directory that is mailed our St. Luke's community, ***please make sure we have your correct address and phone number!*** Have you moved recently? Preparing to move? New phone number? Also, if you do NOT wish to be listed in our church directory, please contact Lynda Fickling lynda@stlukeshr.com and she'll be happy to take care of that. If you have a business that you would like to advertise in this directory, please let Lynda Fickling know. When the Guidebook Representative will be here, they will contact you with size of ad space available and cost.

JUNE/JULY:

***American Cancer Society,
Warren Village, Education***

ST. LUKE'S MISSIONS OF THE MONTH**Highlighting Available Mission Opportunities**

For more information about the following mission opportunities or any other missions supported by St. Luke's, please contact Jerry Hertzler 720-480-0476, jmhertzler@comcast.net or Mike Preble 303-997-7474, mikepreble@yahoo.com.

Relay for Life - Aug 10 & 11

This year's Relay for Life, supporting The American Cancer Society is scheduled for August 10 and 11 at Cresthill Middle School in Highlands Ranch. The entire St. Luke's family is invited to participate in the annual Relay for Life August 10-11 to raise funds for the American Cancer Society. It will take place from 6:00-10:00pm. It is a very fun, low-key, walking event for all ages with an option to sleep overnight outdoors.

Our St. Luke's "team" will be formed as a special memorial tribute to Kenny Sharpe. In addition, our team will be walking laps in honor of all St. Luke's people who have or have had cancer, and their caregivers. We would like to gather the names of all those who have passed away from cancer, are cancer survivors and their caregivers so we can honor them. Please send your names to either Betsy Keyack, bkeyack@att.net or Dave Laurvick, davel@stlukeshr.com by July 15.

To register for the Relay for Life, go to www.rflhr-lt.org. Click on "Sign Up," and "Join a Team." Click on "Search for a Team." Scroll down and click on "St. Luke's United Methodist." It costs \$10 to participate. You can also make an additional donation of your choice.

For fundraising, we will be selling luminarias and t-shirts. Luminarias are decorated in honor of someone you want to honor, lit and placed by the walking path. They are a beautiful tribute! The t-shirts will have the names of all the people who had or have had cancer at St. Luke's and their caregivers. Please email Betsy or Dave know if you would like to purchase a luminaria and/or t-shirt.

During the month of July, Betsy will be in Fellowship Hall with her computer to help you register if you would like. In the meantime, Dave will be rounding up our youth! We hope to see many of you there!

Sedalia Elementary School Partnership Completes Its First Year

A recent Highlands Ranch Herald article highlighted the correlation between double digit poverty rates and the lowest scores in state elementary school reading tests. The article stated that "students who live in poverty typically don't get academic support at home often because parents work long hours to make ends meet. They may not have benefited from high-quality preschool and lack adequate nutrition." In addition, not all students have the same access to computers and Internet service.

Sedalia Elementary School, with which we have a partnership, is in close second place for the highest poverty rate in Douglas County (36%) and is among the schools recording the lowest state district reading scores. We are blessed that the staff of Sedalia Elementary has welcomed us at St. Luke's to help their students in any ways we can. During the past school year, a group of St. Luke's volunteers have been tutoring in reading. I tutored in 5th grade Math (no - it wasn't "weird math" but basic stuff we all need to know). Not only have we been helping the students to progress academically, but the relationships with the teachers and children have been so very rewarding! At the end of the school year, my teacher and students presented me with a framed picture of me with the class, that was signed and said "Thank you Ms. Betsy." We gave hugs all around and they invited me to come back next year. There will indeed be a need for tutors again next school year!

Anne Reck volunteered in the school library and got to know the needs very well. In September, she will be leading a Scholastic Book Fair at St. Luke's to raise money for the library. Stay tuned!

Many volunteers helped with the Food for Families program. Over the course of the school year, we partnered with Hope UMC and the United Methodist Rocky Mountain Conference to provide extra food for families whose children receive free/reduced cost breakfast and lunch at Sedalia Elementary. We worked with Food Bank of the Rockies and provided about 4000 pounds of food for two 3-day weekends as well as Spring and Fall breaks. Next year, we will be partnering with St. Andrew UMC and Hope UMC to continue the food program.

Mike Preble coordinated our Box Tops for Education collection at St. Luke's. We made a significant contribution to Sedalia Elementary's Box Tops program. The principal, Mr. Boser, would like to have more technology in the school. So keep those box tops coming to the collection envelope inside the Missions Closet door!

Many thanks to the following people who volunteered in one capacity or another: Caroline Butler, Nancy Copher, Lynda Fickling, Mike Preble, Sharon Williams, Jon Streaty, Nancy Mussetter, Fred and Janet Munoz, Laurie Gilbert, Linda Palmer, Marilyn Bierbach, Teri Burget, Suzanne Humphreys, Nan Woods, Liz Yount, Janet Johnston, Angie Steinhauer, Lorna Roberts, Patricia Westlake, Michael Streevy, Ben Daly, Peter Reif, Kris Reif, Jennifer Havens. (Please forgive me for any omissions!)

If you would like to be added to the school partnership volunteers for the 2012-2013 school year, please contact Betsy Keyack, bkeyack@att.net.

Warren Village

Warren Village helps motivated low-income, previously homeless single parent families move from public assistance to personal and economic self-sufficiency through subsidized housing, on-site nationally accredited child care, intensive case management, education guidance and career development. A guest speaker from Warren Village will be at St. Luke's on Sunday, June 24. Please watch for more details about that presentation and plan to attend to hear first-hand how Warren Village is changing lives. For more information about Warren Village, go to www.warrenvillage.org, or contact Laura or Mike Richards at 303-791-6038 or corichards@aol.com.

Interfaith Community Services Backpacks

St. Luke's UMC will be supporting IFCS again this year by purchasing backpacks, a new outfit, and school supplies for children in need. By becoming involved in this ministry you will be helping low-income families start the 2012-2013 school year off right. You will also provide, for many of them, the only new school items they will receive.

Donors were registered in May and backpacks will be delivered by the end of July. VBS will help fill some of the backpacks with needed school supplies and new clothing. If you'd still like to get involved, please contact Kristin Foster at kristinfoster13@gmail.com. For more information about IFCS, go to their website at www.ifcs.org.

***Thank you for
your support!***



"The organized unit of United Methodist Women shall be a community of women whose purpose is to know God and to experience freedom as whole persons through Jesus Christ; to develop a creative supportive fellowship; and to expand concepts of mission through participation in the global ministries of the church."

School of Christian Mission is July 12-14 at St. Andrew United Methodist Church. The 2012 themes will be:

- Spiritual Growth: Immigration in the Bible
- Geographic: Haiti: Challenges & Hope
- Social Issue: Poverty

Schools of Christian Mission are educational opportunities for ALL church members to learn about and act on Missions within the United Methodist Church. Deadline for registration is June 22. Forms are available in the UMW file. Cost for the Full School is \$100 which includes five meals and two studies. A one day one study event (Poverty or Immigration) is available on August 25 for \$40 at Brentwood UMC in Denver. Registration due Aug. 11. To receive the study books (\$10 each) please register two weeks in advance.

Subgroups of United Methodist Women at St. Luke's UMC:

Remember to check out the Interest Groups and find your spot to help us fulfill the PURPOSE of United Methodist Women.

- **Simply Saturday.** First Saturday of the month, 8:30-10:00am in the youth room; bring a breakfast item to share. Women ages 18 & up are invited for devotion and mission. This year's theme: *Friendship of Women-The Hidden Tradition of the Bible* by Joan Chittester

July 7, 2012: We will be volunteering at Cafe 180 in Englewood. This is a pay-as-you-are-able restaurant. We will prepare the food, set up the restaurant, etc. Call Lynda to volunteer for a shift: 10:00am-12:30pm (need 5 people) or 12:30-3:00pmish (need 5 people). *Due to Cafe 180 relying on us, if you cannot attend once you have committed to a shift, you will need to find your own sub. Meet at Cafe 180 or arrange carpooling with your shift friends! Mission: organic veggies and/or fruit. Host: Lynda Fickling Lynda@stlukeshr.com 303-791-0659 x20. Sorry - no childcare or breakfast for this meeting.

August 4, 2012: 8:30am in the Conference Room (across from the kitchen) We will be planning our 2012 - 13 season. Your ideas and leadership are what creates Simply Saturday! Mission: School supplies for local children in need. Please bring a breakfast item to share - as you are able. Childcare is available - please contact: sam@stlukeshr.com or 303-791-0659 x47 at least 48 hours in advance. For more information, please contact: Lynda Fickling

- **Book Group:** Fourth Monday of the month, Room 206, Evening meeting 7:00pm, **June 25** - *Friendship Bread* by Darien Gee For more information, please call Renae Parra at 303-683-0872. To be added to the email mailing list, send a request to RenaeParra@aol.com

- **Itch to Stitch:** Third Wednesdays of the month, 7:00-8:30pm downstairs near the Children's Library. For more info, please call Fran West at 303-797-7107.

- **Women's Night Out:** First Monday of the month, 6:30pm various locations
- August 6** - Mellow Mushroom, Streets of Southglenn. Bring your ideas for places to dine. For more information, please contact Elaine Carlstrom at ecarlstrom@comcast.net.

Mark Your Calendars:

- July 12-14 - **School of Christian Mission**, St. Andrew UMC
- Sept. 16 - **St. Luke's UMW Fall Gathering**
- Sept. 22 - **District Meeting**, Applewood Valley UMC, 2035 Ellis St., Golden
- October 19, 5:00pm & October 20, 9:00am - **Conference Meeting**, Park Hill UMC (5209 Montview Blvd., Denver 80207)
- November 2 - **Church Women United**

Keep Connected

Rocky Mtn. Conference United Methodist Women Website: www.rmcmw.org

Women's Division website: <http://new.gbmg-umc.org/umw/>

UMCOR website: <http://new.gbmg-umc.org/umcor>

Visit www.UMWOnline.net to network with others, get and share resources.



WELCOME

Joseph Bradley
Laurvick!

Born June 14, 2012
at 3:05pm

7lbs 3oz • 20 inches long

Congrats to Rev. Brad & Meghan
and the whole Laurvick family!



Joining St. Luke's

When you take the step of belonging to St. Luke's, you will enjoy a **NEW CONNECTION**, a **NEW**

COVENANT, and the **GIFT OF GRACE**. You are God's gracious gift to us. We are delighted to share the journey of faith with you as, together, we grow to reflect the life of Christ.

Persons may join the church any Sunday by transfer of their membership or by profession of faith in Jesus Christ. Fill out the membership card located in the Friendship Pad or at the Get Connected Center. Simply hand the membership card to one of our Pastors or staff members at any time.

Join Rev. Janet and Lynda Fickling for "**Cafe St. Luke's**" **Sun. July 8, 9:30am Rm. 213** where we share coffee and conversation about the history of St. Luke's, the United Methodist Church, our programs and ministries.

Contact Lynda Fickling for more info:
303-791-0659 x20 lynda@stlukeshr.com.

LOOK DEEPER

into

Education, Music & Arts Ministries

Sunday, August 5

Ministry Fair

8:30am-12:30pm

Visit booths sponsored by:

- **Learning with St. Luke's**
Sign up for Fall Classes
- **Music Ministry & Arts**
Adult Music Ministries
Youth & Children Music Ministries
Wesley Players
and many other small groups

Much Ado About Nothing is coming this fall!

Auditions are August 17 and 18. If you've always wanted to perform in a classic production of Shakespeare's play *Much Ado About Nothing*, now's your chance! For more information, please contact Jenna Wilcox at jenna@stlukeshr.com



James Ramsey
Director of Music
& Arts Ministries



Kenrick Mervine
Associate Dir. of
Music Ministry/
Organist



Jennifer Ferguson
Associate Director
of Music Ministry



Kay Coryell
Dir. of Handbells
& Children's Music
Ministry



Jenna Wilcox
Director of
Drama Ministry

SLYJO

had the great opportunity to play for St. Luke's Sunday School on Mother's Day! The band showed off their stylin' new shirts and got the young people moving and grooving with songs like 'The Pink Panther'. Do you know someone grades 7-12 who plays an instrument? Make sure they know that the St. Luke's Youth Jazz Orchestra is a great place to play jazz and pop music. Rehearsals begin again in September, contact Jennifer at jennifer@stlukeshr.com for more information. concert was a fun way to show off our talent. Instrumental groups will start up again in August and September! To find out how to join, contact Jennifer at jennifer@stlukeshr.com or Jim at jim@stlukeshr.com.



Attention all musicians!

Do you sing? Play an instrument? There is a place for you within St. Luke's Music Ministry. From our traditional choirs and worship song groups, to our numerous instrumental groups, you are sure to find something that fits into your interest and ability level. Rehearsals begin again at the end of the summer! Please contact Jim at jim@stlukeshr.com or Jennifer at jennifer@stlukeshr.com for more information. You can also see all of our groups on the St. Luke's website! concert was a fun way to show off our talent. Instrumental groups will start up again in August and September! To find out how to join, contact Jennifer at jennifer@stlukeshr.com or Jim at jim@stlukeshr.com.

Collage Concert

On Saturday, May 21st St. Luke's was proud to introduce the first ever Collage Concert. This exciting program combined the Ministers of Swing, the St. Luke's Brass Ensemble, and the St. Luke's Wind Ensemble. This light hearted and fun program featured music from Star Wars, the William Tell Overture, and the theme from Sesame Street. St. Luke's is blessed with so many great musicians and the concert was a fun way to show off our talent. Instrumental groups will start up again in August and September! To find out how to join, contact Jennifer at jennifer@stlukeshr.com or Jim at jim@stlukeshr.com.



St. Luke's PAA Intensive III: Ensemble

(2nd-12th Grade for the 2012-2013 School Year)

July 23- August 3
9:00am-4:00pm

Little Dorothy Gale of Kansas, like so many girls her age, dreams of what lies over the rainbow. One day a twister hits her farm and carries her away over the rainbow to another world. Come join Dorothy, the Scarecrow, the Tinman, the Cowardly Lion and Toto as they travel the universe of Dorothy's imagination.

Voice Class: Establishing breathing and vocal technique through group lessons.

Dance: Rehearse choreography and practice rhythmic dancing.

Acting Games: Have fun building skills that you can use in performance while gaining confidence and self awareness.

Music: Improve musical comprehension and ability through music theory.

Workshops: Afternoons are filled with special workshops in stage combat, specialized dance, stage makeup, improv, and costuming.

Rehearsal: Rehearse all music and blocking for the final full staged performance of *The Wizard of Oz*.

Register Now: www.stlukespaa.org

PERFORMANCES:
August 2 & 3
at 6:00pm
**Placement and
Casting Auditions:**
July 8, 3:00-5:00pm
& July 9, 5:00-
7:00pm.



Upcoming Events!

- * **June 20 STM - Ultimate Frisbee and fast food/GEM - Game Night 6:00pm**
- * **June 24 SLY AM 9:30-10:30am, SLY PM 6:00-7:30pm Movie Night - Mission Team returns approx. 5:30pm**
- * **June 26 District Volleyball at Littleton UMC, Meet at church © 6:30pm, return 8:45pm**
- * **June 27 STM - Ultimate Frisbee and fast food/GEM - Mall Scavenger Hunt 6:00pm**
- * **July 1 NO SLY AM OR SLY PM 4th of July Weekend**
- * **July 3 NO DISTRICT VOLLEYBALL**
- * **July 4 NO STM/GEM Happy 4th of July !!**
- * **July 8 SLY AM 9:30-10:30am, Jr High Mission Team Blessing at 9:30am Service, SLY PM 6:00-7:30pm**
- * **July 9-14 Jr High Mission Team to Durango CO Team departs at 9:00am**
- * **July 11 STM- Ultimate Frisbee and fast food/GEM - Food Night 6:00pm**
- * **July 15 SLY AM 9:30-10:30am, SLY PM 6:00-7:30pm**
- * **July 17 District Volleyball at St. Luke's 7:00-8:30pm**
- * **July 18 STM - Ultimate Frisbee and fast food/GEM - Zumba 6:00pm**
- * **July 22 SLY AM 9:30-10:30am, SLY PM 6:00-7:30pm**
- * **July 24 District Volleyball at Phillips UMC, Meet at church © 6:30pm return 8:45pm**
- * **July 25 STM- Ultimate Frisbee and fast food/GEM - Water Fun and Capture the Flag 6:00pm**
- * **July 29 SLY AM 9:30-10:30am, SLY PM Renaissance Festival Depart church at 11:00am, Return 7:30pm**
- * **Check www.sites.google.com/site/stlukeshyouth2012 for up-to-date info on programs, activities, ministry opportunities and more!**

HELLO FROM BELOW (downstairs in the Youth Office)

G'Day from Down Under....it's from the DNA's office..... as in Dave 'n Amy's !!! Yes, our first official joy of the month is to welcome Amy McMullen as the Assistant Director of Youth Ministry. Amy has already hit the ground running (check out the new website), and we are all excited to have her passion and energy as part of the SLY team!! Welcome Amy !!!



Dave Laurvick
Director of Youth Ministry



Amy McMullen
Assistant Dir. of Youth Ministry

Running seemed to be the norm in May. We confirmed a great class the beginning of the month, welcoming Gracie Daniels, Tyler Harned, Molly Howard, Madeline LaMee, Jacob Madsen, Heidi Markel, Joshua Merchant, Parker Schroeder, Berkleigh Smith, Hannah C Smith, Hannah E Smith, Kathryn Smith, Abby Suntken, Brooklyn Walker, and Brent Wester as our newest members of the St Lukes Family. Many thanks to the family group leaders, the ex-cons, and the "ladies of logistics" for making this year's confirmation class one of the best !

May continued to run at a furious pace as our Young Adult/College Team sent 15 people to Joplin MO. The community was devastated by an E5 tornado May 23, 2011. After a wonderful 12 hour bus ride, we rafted/decked/felted/shingled/gabled/sided/windowed/doored....you get the idea. We were awed by the welcome we received, the warmth of our hosts at Royal Heights UMC, and inspired by the genuine abundance of hope in everyone we talked with that week. Their stories of survival and loss, of joys and sadness, of faith and despair all lent themselves to an incredible experience of connection and communion with our extended family of faith. We are REALLY looking forward to our next missionary team of 66 Sr High youth and adults returning to Joplin in June.



We continue the planning for 2 additional mission trips this summer, with the Sr High heading for Joplin MO the week of June 17th, and the Jr High team headed to Durango CO the week of July 9th. Please keep our teams in your prayers as we head out into the mission field.



We celebrated graduations from high schools and colleges, and we look forward to all of you becoming part of the SLY Young Adult group. SLY-YA met on Thursday June 7th to plan the summer. It is our goal to stay connected to you as you move on to new adventures, and we seek to build and expand our college outreach. Come be part of it!

As we transition into summer mode, STM (Shortcuts to Manhood) and GEM (Girls Enrichment Ministry) will begin June 6th from 6:00-8:00pm, along with district volleyball on Tuesdays.

Go to www.stlukeshr.com and click the SLY icon for up-to-date info on programs, activities, ministry opportunities and more!

Busy weeks coming up, more fun and fellowship to happen! Please come join us.

Love & Blessings, Dave

Summer Schedule:
Sundays:

SLY AM - 9:30am
SLY PM - 6:00-7:30pm

Tuesdays:
(beginning June 26):
Volleyball - 7:00-8:30pm

Wednesdays:
(beginning June 6):
GEM/STM - 6:00-8:00pm



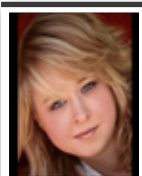
Eric Alpert
University
of Michigan
School of Law
Juris Doctor



Cody Bevier
Heritage
High School
Utah Valley
Univ., Utah



Hannah Bevier
Heritage
High School
Ottawa Univ.,
Kansas



Evan Ann Boose
Heritage
High School
DePaul Univ.,
Chicago



Megan Brown
Mountain
Vista HS
Pepperdine
Univ. Malibu



Connor Drinkard
ThunderRidge
High School
Colorado State
University



Kara Fong
Douglas
County HS
Stanford
University, CA



Hannah Gabriel
Colorado
Cyber School
Colorado
State Univ.



Alaina Gilbert
Mountain
Vista HS
University of
Wyoming



Jackson Givens
Kent Denver
School
Colorado
College



Kimberly Goddard
Columbine
High School
Lafayette
College, PA



Stephanie Hagan
Valor
Christian HS
St. Olaf
College, MN



Kelsi Hertzler
University
of Colorado
BS, Nursing



Lucas Heyse
Cherry
Creek HS
Auburn Univ.,
Alabama



Jonathon Hovland
Mountain
Vista HS
University of
Wyoming



Meaghan Johnson
Arapahoe
Com. College
Assoc. of Arts,
Creative Writing



Alexandria Kohrs
ThunderRidge
High School
Midwestern
State Univ., TX



Michael Lee
Denver
Academy
E. Tennessee
State Univ.



Sarah Linder
Mountain
Vista HS
Univ. of CA,
San Diego



Mica Mallory
Mountain
Vista HS
University
of Northern
Colorado



Bennett McIntosh
Heritage
High School
Princeton
University, NJ



Amy McMullen
Metro State
College
BA, Psychology



Jessica Meier
D'Evelyn
High School
Colorado
Mesa Univ.



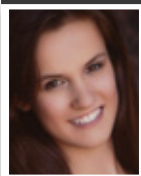
Colton Menzel
ThunderRidge
High School
University of
South Carolina



Beth Miller
Insight School
of Colorado
Univ. of Northern
Colorado



Joey Miyaki
University
of Colorado
BS, Civil
Engineering



Laura Northrop
Mountain
Vista HS
Aveda Beauty
Inst., Denver



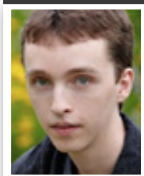
Evan Oliver
ThunderRidge
High School
University of
Colorado



Brandon Raap
Musicians Inst.,
Los Angeles
Associate of Arts,
Drum



Tony Ramsett
University of
Colorado
BS, Economics



Collin Roberts
Mountain
Vista HS
CO State
University



Kelly Severseike
ThunderRidge
High School
Arapahoe
Comm. College



Danielle Sheppard
Highlands
Ranch HS
Fort Lewis
College



Chris Stephens
ThunderRidge
High School
Univ. of
Northern CO



Kathryn Stull
ThunderRidge
High School
University of
Colorado



Rachel Suby-Long
University
of Colorado
BS, Business
Administration



Mike Utter
Colorado State
University
BS, Construction
Management



Nick Warren
Highlands
Ranch HS
University of
Colorado



Jacob Wesson
Rock Canyon
High School
University of
Colorado



Carrie Whitelam
Douglas Cty.
HS Loyola
Marymount
University, LA

SLY-YA (St. Luke's Young Adults)
Thursdays at 7:00pm Youth Room

If you have just graduated or recently graduated, attending college/trade school/working.... (ie. everyone 18 and up!), this is for YOU. We will meet at the church, and decide where to go from there. This group will be meeting every Thursday night to socialize and make new friends and connections. Please come join us. Contact Dave Laurvick for more info: davel@stlukeshr.com

*Class of
2012*



Tyler Whitmer
CO St. Univ.
BS, Health
& Exercise
Science



Tyson Williams
Colorado
School of Mines
BS, Computer
Science

*Blessings to you all!
And come see us often!*



St. Luke's United Methodist Church
8817 S. Broadway • Highlands Ranch, CO 80129
303-791-0659 • www.stlukeshr.com

*St. Luke's United Methodist Church welcomes you to our Christian family,
where we share life. Wherever you are in your faith journey,
you are accepted and encouraged to grow spiritually.*

*Join us in growing together toward full humanity through living
the teachings of Jesus: Love, Acceptance, Justice and Hope.*

Mark Your Calendar!
Feeding of the 5000 weekend
is October 13 & 14!



Join us for Coffee & Conversation

about the History of St. Luke's, the
United Methodist Church, our programs
and ministries. **9:30am July 8** in Rm 213. All welcome!

JUNE/JULY 2012							
Sunday	Monday	Tuesday	Wednesday	Thursday	Friday	Saturday	
 17 Father's Day Sr. Hi Mission Trip to Joplin 8:00, 9:30, 11:00am: Worship –Rev. Dr. Janet Forbes 8:15am: Contemplative Worship 6:34pm: Fusion	18 Sr. Hi Mission Trip	19 Sr. Hi Mission Trip 10:30am: VBS Training 7:30pm: Planned Giving Team Meeting	20 Sr. Hi Mission Trip 9:30am: Wacky Weds. 6:00pm: GEM/STM 6:30pm: Parents of Kids w/Depression/Bipolar 7:00pm: Itch to Stitch	21 Sr. Hi Mission Trip 6:30pm: Contemplative Fellowship 7:00pm: Young Adults	22 Sr. Hi Mission Trip	23 Sr. Hi Mission Trip 9:00am: VBS Decorating	
24 Sr. Hi Mission Trip to Joplin 8:00, 9:30, 11:00am: Worship –Rev. Dr. Janet Forbes 6:00pm: SLY PM 6:34pm: Fusion	 25 9:15am: Morning VBS 6:00pm: Women's Book Study/Potluck	26 7:00am: Men's Group at Egg & I 9:15am: Morning VBS 7:00pm: Volleyball 7:30pm: SPRT Mtg.	27 9:15am: Morning VBS 6:00pm: GEM/STM	28 9:15am: Morning VBS 6:30pm: Contemplative Fellowship 7:00pm: Young Adults	29 9:15am: Morning VBS	30	
JULY 1 No Sunday School 8:00, 9:30, 11:00am: Worship –Rev. Dr. Janet Forbes 6:00pm: SLY PM 6:34pm: Fusion	2	3	 4 Independence Day Office Closed No GEM/STM	5 6:30pm: Contemplative Fellowship 7:00pm: Young Adults	6 9:30am: Playgroup	7 8:30am: Simply Saturday noon: We Don't Waste - Fill the Plate	
8 8:00, 9:30, 11:00am: Worship –Rev. Dr. Janet Forbes 9:30am: Cafe St. Luke's noon: UMW Mtg. 6:00pm: SLY PM 6:34pm: Fusion	9 Jr. Hi. Mission Trip to Durango PAA 5:30pm: VBS Training 7:00pm: Trustees	10 Jr. Hi. Mission Trip PAA 5:45pm: Evening VBS 7:00pm: Volleyball 7:00pm: Missions Team	11 Jr. Hi. Mission Trip PAA 9:30am: Wacky Weds. 5:45pm: Evening VBS 6:00pm: GEM/STM	12 Jr. Hi. Mission Trip PAA noon: Lunch & Learn 5:45pm: Evening VBS 6:30pm: Contemplative Fellowship 7:00pm: Young Adults	13 Jr. Hi. Mission Trip 6:30pm: PAA Band/String Camp Performances 5:45pm: Evening VBS	14 Jr. Hi. Mission Trip 6:45pm: Bridge Club	
15 8:00, 9:30, 11:00am: Worship –Rev. Ryan Canaday 11:15am: Contemplative Worship 12:15pm: Learning with St. Luke's Team Mtg. 6:00pm: SLY PM 6:34pm: Fusion	 16 www.stlukespaa.org	17 PAA 6:30pm: Children's Ministry Team 7:00pm: Volleyball 7:30pm: Planned Giving Team Meeting	18 PAA 9:30am: Wacky Weds. 6:00pm: GEM/STM 6:30pm: Parents of Kids w/Depression/Bipolar 7:00pm: Itch to Stitch	19 PAA noon: Lunch & Learn 6:30pm: Contemplative Fellowship 7:00pm: Young Adults	20 Family Camp PAA 9:30am: Playgroup 5:45pm: Parent's Night Out 6:30pm: PAA Rock Band/String Camp Performances	21 Family Camp 9:00am: Sanctuary Care Team 10:00am: Wesley Writers	
22 Family Camp PAA 8:00, 9:30, 11:00am: Worship –Rev. Dr. Janet Forbes 6:00pm: SLY PM 6:34pm: Fusion	23 Family Camp PAA 6:00pm: Women's Book Study/Potluck	24 Family Camp PAA 7:00pm: Volleyball 7:30pm: SPRT Mtg.	25 Family Camp PAA 9:30am: Wacky Wednesdays 6:00pm: GEM/STM	26 Family Camp PAA noon: Lunch & Learn 6:30pm: Contemplative Fellowship 7:00pm: Young Adults	 27 Family Camp PAA	28 Family Camp 8:00am: Work Day	
29 Family Camp 8:00, 9:30, 11:00am: Worship –Rev. Dr. Janet Forbes 6:34pm: Fusion	30 PAA	31 PAA 7:00am: Men's Group at Egg & I 7:00pm: Volleyball	AUG 1 PAA SLY Sr. High Trip Party 6:00pm: GEM/STM 6:30pm: Parents of Kids w/Depression/Bipolar	2 noon: Lunch & Learn PAA 6:00pm: PAA Production "The Wizard of Oz" 6:30pm: Contemplative Fellowship 7:00pm: Young Adults	3 9:30am: Playgroup PAA 6:00pm: PAA Production 6:00pm: GEM Lock In	4 9:00am: Sanctuary Care Team 10:00am: Wesley Writers	