



The Chronicle

ST. LUKE'S UNITED METHODIST CHURCH

SEPTEMBER 2013

Inside This Issue:

From Rev. Ryan.....	3
From Rev. Sallie.....	3
Spirituality & Wellness....	5
Children's Ministry.....	6
UMW Update.....	7
Music & Arts.....	9
SLY.....	10
Financial Update.....	11

and much more!

St. Luke's Common Table

Join Us In Our Ever-Widening Circle!

"Draw the Circle Wide" is a terrific hymn that the youth sing, and the focus as we move into fall this year. How does St. Luke's draw the circle wide? Where is the Holy Spirit guiding our community? Where do you fit in the ever-widening circle, and how do we open up space for others? Come find out at the Common Table on September 16!

The Common Table is a quarterly gathering of the community of St. Luke's. It is a time to be in fellowship, to discern and discover together, and to share in the happenings of the church.

Join us Monday, Sept. 16, 6:30-8:00pm,

for a potluck dinner, conversation, and community. Childcare is provided with 48 hours advance notice (sam@stlukeshr.com). For additional information, please contact Susan McIntosh (susanmcintosh@yahoo.com).

A Trip of A Lifetime Guatemala June 2013



by Jenn Hunter For the first youth trip to Guatemala, like this, a group of people could not have been picked any better. Moms, dads, daughters, old friends, and new friends all boarded a plane early in June to leave the country for an experience of a lifetime. These missionaries had an exciting 10 days ahead of them!

As we landed in Guatemala City, the muggy, mossy air filled my lungs and instantly made me feel... sticky! The broken houses passed quickly by as we weaved in and out of the jungle on our bus, that we all learned to love, called the Super Niña.

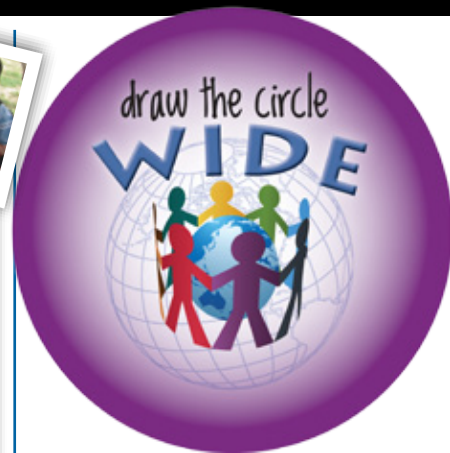
Although we came with a mission in mind, we were also able to explore this colorful country and learn a lot about the people of Guatemala. The ladies went crazy for all of the beautiful fabrics and handmade artifacts that were found in the world famous market of "Chichi", and the teenagers found some fashionable Guatemalan clothes to bring back to the U.S. We also got to see beautiful landmarks and visit the John Wesley School. Pura Vida, the organization that St. Luke's has continued on page 10

Good Times, Great Friends Family Camp 2013

by Kristi Amick
photos from Natalie Barnard

From January 19-28th 2013, families gathered at the 13th annual St. Luke's Family Camp. Our Family Camp Family continues to grow – this year we had a record number of 40 families attend! This was our third year at the beautiful Snow Mountain Ranch – located in Granby, Colorado – where campers stayed in a variety of accommodations – tents, campers, yurts, and the SMR lodge.

continued on page 6



From Our Senior Pastor:

Draw the Circle Wide

*Draw the circle wide,
draw the circle wide.*

*No one stands alone,
we'll stand side by side.*

*Draw the circle wide;
draw it wider still.*

*Let this be our song!
No one stands alone.*

*Standing side by side,
draw the circle, draw the circle wide!*

These are the words to a wonderful song, with music by Mark Miller and words by Gordon Light, and I can't get it out of my head. Sometimes that's an annoying thing—if I mention "It's a Small World After All" from the old ride at Disneyland, how many of you will be a little put-out with me?! But to have Draw the Circle Wide singing in my heart is a joyous experience. We shared this song on our Welcome Home Sunday, September 8, as the Soul Purpose Youth Choir led our learning. We'll also be reflecting this year on how we can "draw the circle wide" in our lives.

It's not that easy, is it? We've got to have big hearts and open minds to keep drawing the circle of our community, and of our love, wider still. Each of us has reasons to draw the circle of our friends and the circle of our attention narrower or closer from time to time. Sometimes

continued on next page



Sunday Worship Services:

8:00am, 9:30am, 11:00am

6:30pm: Revolution

Contemplative Services also offered
(Check website for dates and times)**Sunday School:**

Adult, Youth & Children:

9:30am & 11:00am

Nursery available for:

8:00, 9:30 & 11:00am services

Church Office.....303-791-0659

Fax.....303-470-5615

Email.....office@stlukeshr.com

Website.....www.stlukeshr.com

Preschool Office.....303-791-1982**Staff:**Rev. Dr. Janet Forbes.....x13
Senior Minister Emergency: 303-241-9312Rev. Dr. Sallie Suby-Long.....x32
Associate Minister Emergency: 303-475-0141Rev. Ryan Canaday.....x12
Associate Minister Emergency: 303-944-5061Sharon Oliver.....x27
Director of Children's MinistrySamantha Leahy.....x40
Director of Early Childhood MinistryStephanie Kirk.....x11
Children's Ministry CoordinatorDave Laurvick.....x14
Director of Youth MinistryAmy McMullen.....x19
Assistant Director of Youth MinistryKay Swanson.....303-791-1982
Director of Little SchoolDr. James Ramsey.....x23
Director of Music & Arts MinistriesKenrick Mervine.....x33
Associate Director of Music Ministry & OrganistJennifer Ferguson.....x37
Associate Director of Music MinistryKay Coryell.....x36
Director of Handbells & Children's Music MinistryErnie Rodgers.....x44
Revolution Worship LeaderCarrie Mallery.....x35
Assistant Revolution Worship LeaderBrenda Schafer.....x10
Office AdministratorDave Cupp.....x24
Director of FinanceBonnie Haney.....x16
Accounting ClerkLynda Fickling.....x20
Director of Servant Ministry/Spiritual DirectorBarry Curtis.....x39
Facilities ManagerAll submissions for the
October 2013 issue of The Chronicle
are due Sept. 20

Editor: Sharon Oliver

chronicle@stlukeshr.com

The Chronicle is published 10 times per year
and is emailed to those on our email blast
list, and it can be found on the church
website. Printed copies are available at church
entrances. To receive The Chronicle via US mail,
please call or email the Church Office.**Rev. Janet Forbes**
Senior Pastor

our healing happens in small ways, in private corners, slowly.

And sometimes the power of love can burst our hearts and minds open all over again. Then the hard-won fruits of our love—compassion, that deep empathy for another's feelings or situation; and forgiveness, that soul-searching acceptance that every one of us makes mistakes and can strive to set ourselves right again—can grow sweet once more, and our lives expand and deepen.

So, the great mission of our lives is to move our homes, our neighborhoods, our nation, and the world toward creating communities of care.

We'll be grounded again this season by the banner, **FEEDING OF THE 5,000**, on the side of the trucks in our parking lot. We are telling our community a story about caring... a story about Jesus and about us... a story about the feeding of five thousand families in the Galilee in the first century and in Denver in the twenty-first. St. Luke's will be asking our community to replicate this story... to act against hunger in our own backyard. **It's that simple.**

The story began with bad news. John the Baptist had been killed by King Herod. Everyone was stunned by this tragedy, by the loss of this great prophet, including Jesus, who was John's cousin and protégé. Jesus wanted to get away by himself to grieve. So he got into a boat to sail across the lake. The crowds followed along the shoreline, keeping an eye on his boat. When Jesus landed, many people had already arrived. Jesus looked on the crowd with compassion. And so he taught and healed. The day quickly passed. It got to be late, long into the day, and one of the disciples said, "This is a deserted place, and the hour is now late; send the crowds away so that they may go into the villages and buy food for themselves." Jesus said, "They need not go away; you give them something to eat."

In John's version of this story, the disciple Andrew found a young boy with five loaves of bread and two fish, and brought the boy to Jesus. Jesus invited everyone to be seated on the grass. He took the bread and fish, looked up into heaven, gave thanks, broke the bread, and gave it to his disciples who gave it to the crowds. They all ate and were satisfied. And there were twelve baskets of bread left over.

Five thousand families were fed.

The feeding shows that Jesus, God's messiah, invites all people to a great banquet where everything is shared and no one goes hungry... ever! The feeding of the five thousand is about more than the sharing of food. It is about sharing a vision of wholeness for all people. In unambiguous language, Jesus commands the disciples, "You give them something to eat!"

St. Luke's is living the commitment to be a part of drawing wider circles. Whether you are bringing non-perishable groceries to help fill the pantry of Denver Urban Ministries, or gleaning after the Broncos games at Mile High stadium, or serving at-risk families at Café 180, or sorting clothing for resale at Renewed Treasures, or providing tutoring for students at our partner school in Sedalia, or buying pumpkins to sustain youth in mission, or serving homeless youth at Urban Peak, you make a difference and make the world different by living the teachings of Jesus.

Let this be our song! No one stands alone. Standing side by side, draw the circle, draw the circle wide!

With much heart and hope, —Rev. Janet

The feeding of the five thousand is about more than the sharing of food. It is about sharing a vision of wholeness for all people.

October Learning with St. Luke's Opportunities

October is bringing a plethora of learning opportunities at St. Luke's. Facilitators and the Learning with St. Luke's team have been working hard to bring our best offering of fall education opportunities yet.

Kristin Foster will be bringing the popular **Beth Moore Bible Study** back on Oct. 3. This fall the study will focus on David on Thurs. nights from 6:00-8:00pm in the Conference Room. Childcare is available. The course will run until Dec. 19.

Also available come September 29 is Lynda Fickling and Renea Parra's **Servant By Design** course. Courses will be on Sunday mornings at 11:00am ending at noon in room 210. The class will continue through November 17.

Engaging Spirituality will commence on Thursday September 26 at 10:00-11:00am. Sam Leahy and Janita Rhodes will facilitate that class that will run through mid May.

Compassionate Life Drop In Discussion Group starts on on Friday Sept. 20 10:00-noon.

Please register at either the Learning with St. Luke's table open on Sunday morning's, or on the Learning with St. Luke's website by clicking on our link on the St. Luke's homepage.

We also offer a myriad of ongoing classes that cater to a diverse range of participants. Please look for more information at the Get Connected table or online at www.stlukeshr.com.



Rev. Ryan Canaday
Associate Minister

“Feeding of the 5,000” is Here!

The “Feeding of the 5000” food drive is coming up! Mark your calendars... Oct. 4-6 (Friday, Saturday, and Sunday).

As you know, we need your help in making this thing happen! Last year we had a total of 76,000 pounds of food donated to Denver Urban Ministries (DenUM). This made a huge difference at DenUM and the families who go to DenUM looking for some help. We are going to continue helping the poor and hungry in our midst.



Do you think we can do more the 76,000 lbs this year? I do!

Our theme at St. Luke's for this fall is “Draw the Circle Wide.” This is one of the ways we are drawing our circle wide... making it bigger and bigger! It's about compassion and jumping into something that is bigger than ourselves. I think Jesus digs the idea of a group of people coming together to make something big happen... something as big as feeding tons of hungry people right here in our own city. I can hear Jesus whispering, “Yes, when I was hungry you gave me something to eat... what you do to the least of these is what you do to me.”

We are following the way of Jesus in a very practical way. We are coming together in love to draw our circle wide... really wide! I hope you are planning to participate.

Here is a quick checklist of how you can help us make a difference in the lives of thousands of hungry families.

1. **Make a personal food donation the weekend of October 4-6.**
2. **Take home bags, available at St. Luke's near the front entrance, to hand out to as many friends and neighbors as you can and ask them to donate.**
3. **Sign up to volunteer at stlukeshr.com. On our homepage click on “Feeding of the 5,000” this will allow you to sign up for various things and see a basic schedule for the weekend.**
4. **Use Facebook, Twitter, and other social media outlets to invite friends to participate and donate.**

“Feeding of the 5,000” t-shirts are still available for \$10 (these will be used for at least the next 2 years.) If you have already purchased one, or are planning to purchase one, please wear it throughout the weekend when you are volunteering.

After all is said and done, come join us that Sunday evening at St. Luke's @ 6:00pm! We will be celebrating our work through sharing a meal (please bring a dish to share) and some stories together of our experiences from throughout the weekend. We'll be asking the question, “Where did you see God this weekend?” We did this storytelling piece last year and the Spirit moved in incredible ways. We expect no less this year. It's our time to reflect, take a moment to consider what we're doing and why we're doing it; it's our time to point to God moving in our midst.

The Revolution band will be providing music for the evening. Food, music, and storytelling... hope to see you there!

It's gonna be an awesome weekend!

Grace & Peace, Rev. Ryan



Rev. Dr. Sallie Suby-Long
Associate Minister

What Transforms Us?

Many of you have been quite gracious to ask about my recent dissertation research. I promise not to go into a lot of data (yes, you can breathe a sign of relief!) but I'd love to share just a little about the process and what I learned.

In early August, I participated in commencement with Capella University in Minneapolis and officially received my PhD in Education with an emphasis in Leadership and Psychology. After 3½ years of rigorous coursework and research it was a welcomed celebration - the culmination of a dream I had held since I was 24 years old! Thanks to the wonderful support of my amazing husband and daughters, this dream was finally realized.

As it turns out, I am bi-vocational combining my passion for Education and Psychology with Vocational Ministry. So, although my research was focused in transformative learning related to leadership, I naturally thought about how the results integrate with the spiritual aspects of life. I believe that the Spirit of God is central to transformation in our lives. I also believe we are in partnership with God and that as co-collaborators in life, we all have a part in fostering transformation.

My dissertation focused on the Role of Transformational Learning in Women's Leadership Development. Prior to joining the St. Luke's pastoral team, I had the pleasure of working with outstanding leaders from across Wyoming and Montana who were affiliated with the Leadership Wyoming and Leadership Montana Programs. While conducting my research, I had the privilege of re-connecting with many of these leaders as they generously participated in my academic study and shared their life and leadership experiences.

One of my primary research questions was “What facilitates transformative learning?”. The data revealed that the following experiences often foster transformative learning:

- Intentional personal reflection about decisions, experiences, and challenges.
- Discussion about our concerns and our learning in safe & welcoming settings.
- Small group conversations that give us opportunities to reflect on life experiences and questions.
- *Life changes such as job loss/transition, the passing of a loved one, separation/divorce, and changes in health.

We are all part of the sacred partnership that nurtures transformation. As we begin this new year together as a community of faith we can intentionally share our stories, reflect on our lives and experiences, support one another during life changes, develop safe and trustworthy learning environments, form small groups where spiritual friendships thrive and reflective dialogue are encouraged, and develop environments of trust where meaningful conversations emerge and where transformative connections are fostered.

I welcome opportunities to reflect with you about your questions, challenges, learning, life changes, and stories.

Thanks to Altar Team!

This is to express appreciation to the Altar Team - Kathy Swier, Janet Sackett, Fran West, Sharon Smith, Nan Woods and Linda Malone - for all the work they do behind the scenes to make our worship experience beautiful. This includes dressing the altar, flower arranging, the banners, and all the details that go into Communion. Thanks team!



Lynda Fickling
Director of
Servant Ministry/
Spiritual Director

Get CONNECTED Monday Mornings at McDonald's (MMM)

Here's an open invitation to you throughout the summer! Meet me at the Highland's Ranch McDonalds (Broadway & Highlands Ranch Parkway) 8:30-10:00am. I want to get to know you better and help answer questions you may have regarding St. Luke's, including our activities, programs and anything else that comes up! Consider this Café St. Luke's outside the building! **Looking forward to Mondays!**

Join us for Coffee & Conversation



about the History of St. Luke's, the United Methodist Church, our programs and ministries. **9:30am any 2nd Sunday of the month** *excluding December. Meet Rev. Sallie & Lynda Fickling In Room 212. All welcome!

Is God inviting you into a deeper relationship?

Join us for an experiential workshop Centering Prayer, a prayer method where we sit in silence with God, or, as Gregory the Great expressed it we "rest in God." Though we often think of prayer as thoughts or feelings expressed in words, this is only one expression. Centering prayer facilitates the movement from more active forms of prayer into a receptive prayer of resting in God where we experience God's presence. This is traditionally called contemplative prayer. Thomas Keating says contemplative prayer is "the opening of mind and heart, body and emotions – our whole being – to God, the Ultimate Mystery, beyond thoughts, words and emotions."

The Introductory Workshop will be held on Saturday, September 28 9:00am-1:00pm at St. Luke's (Registration will begin at 8:30am)

Cost: Workshop \$15.00 (includes coffee/tea and snacks)

Our facilitators will be from the Contemplative Outreach Center of Denver. To further exploring the prayer practice, join our Contemplative Fellowship Group, Thursdays 6:30-8:00pm.

Contacts: Glenda Watson glendawatson@aol.com or Lynda Fickling Lynda@stlukeshr.com

New! AGELESS SINGLES

A social group for unmarried, divorced, widowed, men and women of all ages.

UPCOMING EVENTS:

Saturday Sept. 28: Hike at Spruce Mtn in Larkspur. Meet at St Luke's at 2:00pm.

Friday October 4: First Friday Arts Walk on Santa Fe. Meet at St Luke's at 5:00pm.

RSVP to Allison Wright,
allisonwright303@yahoo.com or 720-371-6760.



Brenda Schafer
Office Administrator

PRAYER CONCERNS

Please stop by the Information Center, by the front door, where you will find the complete and updated Prayer Concerns list or view the listing on our website. Contact Rev. Sallie Suby-Long or Brenda Schafer if you have any additions/removals. 303-791-0659 x32, leave a note on the front desk, or email sallie@stlukeshr.com or brenda@stlukeshr.com

LATEST ENTRIES TO PRAYER LIST:

Olivia Murrow
Joe Forbes
Kathy Hutchinson
Jackie Durban
Marge Harper
Linda Fligg
Jan Lindquist
Dave
Cheri
Fred Strawn
Steve Pyles
Kam Boles
Dixie Enger –

Don & Marcia Enger's sister
Jim & Martha Kreutz
Juanita Robinson –
Jan Meyers mother
Shirley DeLuca
Thomas Harper –
Eric Harper's father
Tessa Smith
Gianni
Bud Scholle
Krista Rogman
Ro Hamilton –
Alicia Waldheim mother
Julia Klug
Linda Keller
Marilyn Ott
Marcia Enger
Diana Brown
Norma Harris
Heidi Kentzel
Mike Stephens
Dave Rhodes
Dillon Schindler
Taylor Baird
the Cooke family
Raya Smith

Barbra Spagnolo
Bea Lasky
Joe DeGiorgio
Brian DeGiorgio
Janet Thoma

SYMPATHIES TO:

Marcy Sunken on the passing of her father, Jon Crose
Stuart & Erin Wright on the passing of Stuart's father, Larry Wright
Dan & Kathy Gross on the passing of their nephew, Talon Newman
Khosrow & Manijeh Badiozamani on the passing of Manijeh's mother, Mrs. Golbabai
Roger & Emily Adcock on the passing of their son, Joe, & to grandparent's Dean & Isabel Kittle
Steve & Cathy Collins on the passing of Steve's aunt, Benny Cook
Rake, JJ & Ben on the passing of wife/mother, Jennifer Jiang

CONGRATULATIONS TO:

Jon & Alaina Hovland on the birth of their son, Bentley Jayce Hovland; and to proud grandparents, Gary & Laurie Gilbert, too!
Jim & Katie Youll on the birth of their daughter, Madeline Kate Youll
Russ & Kara Overman on the birth of their son, Jordan Kendrick, and big brothers Tyler & Nathan and proud grandparents, Gary & Laurie Gilbert, too!
Larry & Stacey Wheeler on the birth of their son, Oliver Layne Wheeler & big brothers Mason & Kellen, too!
Andy & Kim Hendreschke on the birth of their daughter, Madeline Hazel Hendreschke and to big sister Amelia, too!

Group Spiritual Direction 3 Week Course Sundays, Sept. 29, Oct. 6 & Oct. 13

This practice sometimes referred to as Spiritual Mentoring, Spiritual Guidance or Soul Friendship, is helping people share their sacred stories and accompanying others on the spiritual journey. It is a process of addressing spiritual formation at a deeper level and being attentive to God's presence in all aspects of life. Group Spiritual Direction or Individual Spiritual Direction often supports individuals in discerning life purpose, seeking new perspectives, working through change, embracing new chapters of life and enhancing self-awareness. 12:30-1:30pm in the Chapel.

Contact sallie@stlukeshr.com Sign-up at www.stlukeshr.com or at the Get Connected Center Contact sallie@stlukeshr.com Need childcare? Contact Sam@stlukeshr.com 48hrs in advance.



*Journey toward
Wholeness*

Spirituality and Wellness *Connection. Inspiration. Transformation.*

"Sacred spaces reveal themselves. They have a way of growing on the visitor, almost like something organic. Some would say they 'breathe,' and that the old stories which their walls have witnessed are somehow 'whispered to those who listen.'"

The Spirituality and Wellness Team has continued discussions to refine our sense of who we are, how we are linked to the greater St. Luke's Community, and what we offer through our activities. The words Connection, Inspiration, and Transformation have emerged to describe our intentions, and you will begin to see these words linked to our logo and used more consistently to describe what participants can expect to experience through our Speaker Series, our Classes and Experiences, our Spiritual Direction Opportunities, and our Outdoor Adventures.

Speaker Series: Our annual speaker series will continue to create opportunities for connection as we consider the inspirational and transformational messages of thought leaders within our community.

- **Courage in Today's World.** Bryan Hutchinson - Tuesday, November 12, 6:30-8:30pm

Spiritual Direction:

- **Group Spiritual Direction.** Sundays September 29, October 6 and 13; 12:30-1:30 in the Chapel (sallie@stlukeshr.com, lynda@stlukeshr.com)
- **Individual Spiritual Direction.** Ongoing (sallie@stlukeshr.com, lynda@stlukeshr.com)

Classes and Experiences:

- **Engaging Spirituality; Live Deeply – Love Broadly.** Begins September 26 – This small group class is a spiritual journey that explores the connection between prayerful presence and social action. (Jenita Rhodes (jenita@pcsisys.net))
- **Mindful Presence** - Ongoing on Mondays (Samantha Leahy, sam@stlukeshr.com)
- **Daring Greatly: Wholehearted Parenting** - September 15, 22, 29 Inspired by Brenae Brown's book, *Daring Greatly*, this class will stimulate conversations that will focus on how we can enhance our parenting through modeling authenticity, courage, and faith. (Sam Leahy, Rev. Ryan Canaday, Rev. Sallie Suby-Long, sallie@stlukeshr.com)

Outdoor Adventure Team: Our Outdoor Adventure Team has facilitated experiences throughout the summer that have provided opportunities for relaxing in nature and gathering fresh images of God that affirm God's continual presence and love for us in our daily lives. Our ministry is all about creating opportunities for people to connect with each other in the outdoors where nature, friendships, and God give special meaning to relationship.

Canoeing on Chatfield: On August 1 we shared a beautiful evening navigating the quiet shores of Chatfield Reservoir with Phil Waltz, a naturalist from South Suburban Parks. Participants were invited to break away from the rhythms of daily routine and to just be in nature, to relax with friends, and to experience a sense of renewal that nature often brings. Shoreline birds, including pelicans, herons, ibis, and avocet, complemented by the softening evening light, created a mystical space to engage in the moment. Three mother/daughter crews added a unique sense of grace to the evening.

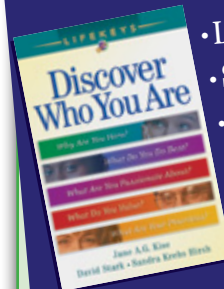
Hike to Gem Lake: Sharon and Bob Oliver invited us to spend a night at their mountain cabin near Estes Park and enjoy a hike to Gem Lake August 17. As we enjoyed a simple supper, Sharon shared family stories of cabin vacations over the years. Our group responded with our own stories of connection and inspiration that have transformed ordinary places into sacred spaces. Hiking to Gem Lake, Bob and Sharon introduced us to more sacred spaces all along this beautiful trail, and we added to their list, as we connected through discovery, memory, and awe. We hope our St. Luke's family, yes each of you, will consider joining us for an upcoming Outdoor Adventure. We especially invite you to share with us your own sacred Colorado spaces.

Upcoming Adventures: (Look for details in the St. Luke's Bulletin)

- September – Full moon hike in O'Fallon Park (Bear Creek Canyon)
- October 12 – Hike to Mallory Cave (named for Carson Mallory's father)
- November - Explore the Colorado Paint Mines, a "Romp in the Rocks"



LifeKeys, a spiritually-based comprehensive program for discovering:



- Life Gifts
- Spiritual Gifts
- Personality Type
- Values
- Passions

www.lifekeys.com

Servant by Design

Sundays, Sept. 29-Nov. 17,
11:00am-noon

A spiritually based comprehensive program for discovering: Life gifts, Spiritual gifts, Personality Type, Values, and Passion. Signup online www.stlukeshr.com or at the Get Connected Center. \$13.00 Facilitators: Renae Parra renaeparra@aol.com & Lynda Fickling lynda@stlukeshr.com

Have you been thinking about getting involved with St. Luke's, or getting a little more involved?

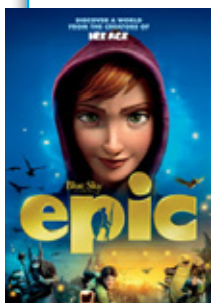
No matter your passion, gifts, or time - there's a place for you here! We have a variety of opportunities and teams that make up our joyous community, where your talents will help define who we are how we grow. Now 'tis the season during which our Equipping Ministry Team invites you to prayerfully consider your special space with us. Check out the many options at www.stlukeshr.com/p_catalog.asp or pick up a copy of the Catalog of Ministries at St. Luke's or contact Lynda Fickling lynda@stlukeshr.com or Audrey Elling audreyvoice@aol.com



Woof! Woof! Jake and Max, here! And yes, we've added a new voice to our column. Shea, the cat! She will bring a girl's and a cat's point of view on here so we thought she'd be a great addition to the team, plus she's fun to chase. Wow! Can't believe the school year is already full swing! And we have so much to bark about in Children's Ministry.

First, Shea, wants to remind everyone that we have a **Children's Ministry Team Meeting** on a new night - Thursday Sept. 19 at 6:30pm - all are welcome to discuss our program and **we will briefly recap our training event** if you weren't able to make it.

SLY, Jr. Kicks off the year on Sept. 15 at 5:30pm. All 5th & 6th graders and their families welcome. Info Meeting for parents at 7:00pm. Check out our schedule for the new year online!



Sept. 20 6:45pm Family Movie Night "Epic". Wear your pj's and bring your pillows. We'll provide the movie and the popcorn! Bring a friend!

Third Grade Bible Sunday - Sept. 22! If you know a third grader

who would like the gift of their very own Bible, please email sharon@stlukeshr.com by Sept. 17.

Acolyte Training will take place on Sept. 29 at 12:15pm. All children 2nd-6th grade eligible. RSVP by Sept. 28 sam@stlukeshr.com. Come see our new Acolyte stoles (more info on those and new & improved Acolyte procedures next month.)

Love & Logic Parenting Classes Three Thursdays, Oct. 10, 17 & 24 6:00-8:30pm. \$69/person, contact suzanne@justshutterup.com to register

Register now for Sunday School! You can do it online at www.stlukeshr.com/children or just fill out a yellow form on Sunday mornings. It's going to be a great year! ALL families must register each year. Thank You!

Don't forget our website www.stlukeshr.com/children. You can check out upcoming **Events**, and the **Sunday School Servant Schedule and more!** Please let Sharon & Sam know if you have any questions.

Love and Furry blessings!



Sharon Oliver
Director of
Children's Ministry



Samantha Leahy
Director of Early
Childhood Ministry



Stephanie Kirk
Children's Ministry
Coordinator

Wow Moments at Servant Training

Servant Training took on a new learning component this year by adding a "wow" speaker. Rev. Dr. Leanne Hadley shared with us her gifts of years of experiences



working with children and youth in crisis and explained how those children revealed an intense spirituality. Leanne was able to articulate a clear path of transformation that these the children journeyed through and she shared the importance of this transformative path with our group on Tuesday Sept. 10. She also gave us some tools that can help us create the space for our children to also travel this path. Not only can we have fun with our children learning about bible stories and engaging and creating community at St. Luke's but we also have an opportunity to bring real spiritual transformation to their lives and to our own. Through Leanne's process of allowing the child to deepen their connection with God, and giving them the ability to create a sacred space through creative tools, children can reveal their spirituality in unique ways and find deeper meaning in their church experience that they can carry over to their day to day life. It's powerful stuff. If you didn't make it to training, and would like to learn more just contact Sharon or Sam. We are excited about the possibilities and the energy that Leanne brought to our program.

Be sure to sign up to serve in Children's Ministry. We have openings that would be a perfect fit for you and this year is sure to be a wonderful experience for our servants and our children. Visit our website www.stlukeshr.com/children to view the current schedule.

Family Camp continued from page 1 Throughout the week, daily activities kept our Family Camp Family busy. We enjoyed a variety of activities including a waterfall hike, canoeing, archery, high ropes course, zip lining, horseback riding, and a day of fun at Winter Park. Each camper had the opportunity to tie dye, create a paracord bracelet, and start a memory book to bring a little piece of camp and our memories of the week back home. In the evening, we relaxed by the campfire, roasting marshmallows for s'mores and singing campfire songs.

Every day brought opportunities for connection - whether it was during one of our activities, sharing a meal, or just sitting and relaxing together. New friendships were formed, and old friendships renewed. It's these relationships that create our Family Camp Family, and encourage campers to return each year.

As always, community meals were a highlight. Each morning started with a filling breakfast, and each evening finished with a delicious dinner. This year we held the Kenny Sharpe Memorial Chili Cook Off, where we enjoyed six different chili dishes. Each was delicious, and we are looking forward to making this an annual Family Camp event.

This year's Family Camp may be over, but we look forward to more great times with friends in 2014. Mark your calendars; next year's Family Camp is July 18-27, 2014. Hope to see you at Snow Mountain Ranch!





Kay Swanson
Director of
Little School



Little School News:

Welcome Back!

It seems like just yesterday that we said goodbye to our graduates and families off to celebrate summer break, and here it is the beginning of school already! Our staff is refreshed and very excited about beginning a new year. We always love the wide-eyed enthusiasm that fills our rooms when they come back! The laughter, smiles, hugs and yes a few tears (from the moms) are always welcome. We can't wait to see these children grow and blossom!

We welcome two new 4's teachers: Annie VanHoosen MWF and Michele Costa-Phair MWF. We are pleased to have their talents and energy!

Open House was August 28th for Parents and Open House for Children was August 29th. School officially began on September 3rd.

Remember, we are always in need of substitute teachers (we even pay!) and others who love to be around children. If you have never seen your Little School in action, come for a visit and see for yourself!

Please keep all of our staff and our children in your prayers as we begin our 19th year!

Blessings, *Ms. Kay and Staff*

"Children go where there is excitement and stay where there is love."



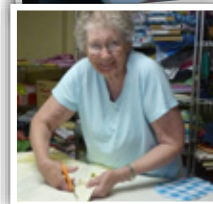
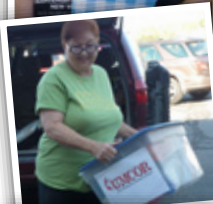
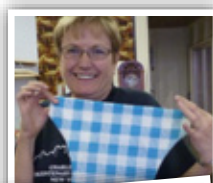
"The organized unit of United Methodist Women shall be a community of women whose purpose is to know God and to experience freedom as whole persons through Jesus Christ; to develop a creative supportive fellowship; and to expand concepts of mission through participation in the global ministries of the church."

Please join us for UMW Fall Kick-off Celebration: Sunday, Sept. 29 2:00-4:00pm.



Pie, Prayer, Purpose: Share a piece of pie, conversation, prayer. Enjoy an Afternoon Experiencing God's Love, Grace and Presence in our lives. Support our Mission Recipient - **Missionary Donna Pewo** serving children of Cheyenne-Arapaho tribes. Betsy Keyack is visiting Donna and will return with stories and photos. Please sign up at the Get Connected Table on Sundays (sign up by Sept. 22.)

Donation items to bring (optional): School supplies for children: backpacks, colored pencils, erasers, regular pencils, pens, folders, scissors, glue sticks, 12 inch rulers (no paper or notebooks please), or monetary donations.



UMCOR Mission Trip Report: In July a group of fourteen from St. Luke's went to work at the UMCOR Depot in Salt Lake City for a week. Most of the St. Luke's group packed health kits during the week (over 3000 of them!) A smaller group of us headed off to the sewing room to make baby gowns and diapers. We constructed 57 cloth diapers and 46 baby gowns all made out of the cutest flannel fabrics. Fran West, Renae Parra, Janet Sackett, Elaine Carlstrom sewed and a colorful rainbow of the garments which they hung on the wall. Rev. Janet Forbes used her pedal foot one afternoon and constructed diapers too. Grace George and Edee Worth popped in and out the room to help with the cutting of fabric. It was a wonderful time of camaraderie in mission. We brought back the patterns and sewing instructions; if you are interested in doing some sewing for mission contact Fran West or Janet Sackett to get the patterns. We are also collecting flannel fabric to use for the sewing projects. If you have some good sized pieces of flannel (at least 1/2 yard in length) you would like to donate, please put them in the bin marked UMCOR in the Mission Closet.

Subgroups of United Methodist Women at St. Luke's UMC:

Itch to Stitch - Second Saturday 10:00-11:30am. Meet in Goliath area of church basement; Contact Fran West 303-797-7107 mfranwest@gmail.com for more info. Not meeting in August.

Women's Night Out - First Monday, 6:30pm

- October 7 - Cafe Rio - 6907 S. University, Centennial (at Southglenn)
- November 4th - Romano's - 32 W. Springer Drive, Highlands Ranch

Simply Saturday Helping Hands - First Saturday, 9:00am; Room 206

- The calendar of events has been set; pick up a flyer at the Get Connected center. The group is concentrating on mission activities this year. Also, watch the bulletin and emails for upcoming outings.
- October 5 - Help with Feed the 5000

Contact Tennie Christman at mydammie@comcast.net or Linda Osborn at lmosborn5@gmail.com for more info.

Book Group - Fourth Monday, Room 206, 7:00pm

- Sept. 23 - "The Chaperone" by Laura Moriarty
- Oct. 28 - "In the Garden of Beasts" by Erik Larson

Contact RenaeParra@aol.com to for more info.

Common Thread - meets First Thursday at 10:00am, usually at the church. Call Caroline Butler for more info 303-797-3225

Save the Dates:

Saturday, September 21 UMW Annual District Meeting at Sunrise UMC Contact Janet Sackett or Betty Ludlam if you would like to attend with the St. Luke's carpool.

Sunday, September 29 2:00-4:00pm, UMW Fall Kick-off event

The United Methodist Church

What are our roots...?

What do we believe...?

Who was John Wesley?

Two Sundays: October 13 & 20
11:00am-noon in Room 206

Childcare or Sunday school available for your children

Monty Hoffman will answer these and any other questions that you have about the Methodist movement.

Questions? Contact Monty at
msaffordexp@aol.com

SEPTEMBER:
Feeding of the 5000,
We Don't Waste

MISSIONS OF THE MONTH

Highlighting Mission Opportunities: For more about missions supported by St. Luke's, please contact Jerry Hertzler 720-480-0476, jmhertzler@comcast.net or Scott Hetherington 484-883-0778 scott.g.hetherington@gmail.com

Are you ready for some football?

Help **We Don't Waste** rescue leftover food from the suites at Broncos home games! St. Luke's volunteers rescue an estimated 45,000 servings of food each season, all of which are distributed to Denver's underserved populations. Please help St. Luke's continue to support this outstanding cause by volunteering for one or more games. Look for the We Don't Waste sign-up table in the Narthex after the 8:00 and 9:30 services. Or contact Andrea Kirchhoff akirchhoff6652@yahoo.com; 303-683-6652.

Guatemala 2014



For the past nine years, St. Luke's has been sending Mission teams to Guatemala. We are currently in the planning stages for our March 2014 trip. The construction focus of

this trip will be building school rooms and/or cinder block homes for needy families in the Lemoa area. In addition, we will have some team members who will be running a "band camp" at the John Wesley School. Team members will have the option of being involved with either or both of these activities.

As in the past, those team members who sponsor students attending school in Guatemala will have an opportunity to meet with their child while on the trip. We are also planning to hold bible camps with the Guatemalan children.

Dates for the trip will be March 21-30, 2014. The cost for the trip has not been finalized (due to fluctuating airfares) but in the past the cost has been approximately \$1,750 per person. More information about this trip can be found on the Pura Vida website (puravida.org). This website includes several journals, written by former St. Luke's missionaries, which describe our activities and missions work over the past few years. Also, due to the nature of this construction project, we will be enforcing the Pura Vida age policy which requires that youth be at least 15 years of age to go on the trip.

If you are unable to attend the trip, but are interested in helping with our fundraising for the work projects, we would LOVE to have your help. We will start our fundraising projects later this fall.

In addition, you are invited to attend our initial planning meeting on **Sunday, September 29 at 12:15pm**. The meeting will be held at St. Luke's in Room 213 and is open to anyone interested in our church's mission work in Guatemala. At this meeting, we will be accepting the first deposit, a \$250 check made payable to Pura Vida. This deposit is required to reserve your spot on the trip. Please note that this deposit is non-refundable. Spaces on the trip will be given out in the order that deposits are received. (If you need to cancel, the deposit will be considered a tax deductible donation to Pura Vida.) This year all applications will be taken online.

For any questions regarding the March 2014 trip, please email Laura Richards (laura@puravida.org).

HAAT Force Update

We have several fund raising events coming up.

- We will be selling "Duffy's cinnamon rolls". If you have never tried these you are in for a real treat. Please contact us at, info@haatforcesouthmetro.org to purchase these goodies.
- And finally we will be holding an "Electronic Recycling Event". Details are still pending. Stay in touch for more information.

Love INC Empty Bowl



Are you interested in serving up LOVE to a community in need? If so, please consider attending the 2013 LOVE INC Empty Bowl Event on **Friday, October 4, 6:00-9:00pm**. This year it will be held at the Columbine Country Club. A nice selection of high caliber hand crafted bowls, made by local artisans, will be

available for attendees. This includes wooden bowls, pottery and fiber art bowls. In order to be in solidarity with those in our community who are less fortunate, a simple meal will be served. Guests can expect to find food and drinks at every corner. This new format provides an opportunity for all to mingle, greet friends, stay on top of bids, get favorite auction items and participate in the travel raffles. TV personality, Stephanie Riggs, will be the emcee for this event. Tickets are \$45 each or \$600 per table and are available on line at www.loveinclittleton.org. Please come to support this amazing event while benefitting a great cause.

Memorial Gifts Say You Care



Sometimes a gift of flowers is not appropriate or not enough recognition. When the obituary suggest "in lieu of flowers" you can make a gift through the St. Luke's Memorials and Honors Giving Program. Your gift in memory of someone special at the time of their death, or at the anniversary of their death, is a wonderful way to remember their special contribution to life.

The Planned Giving Team has made memorial giving at St. Luke's easy. There are memorials and honors giving brochures and special envelopes located in the literature rack just inside the front door. These items provide an easy way for you to select several giving opportunities plus the possibilities you may have that are not listed. Also, they provide an easy way for proper recognition of your gift. All you have to do is turn in your donation to the church office and include your intention for the gift.

The Purpose of St. Luke's Planned Giving Team

Provides information, opportunities and administration for members and constituents to make provision for giving through St. Luke's by means of wills, annuities, trusts, life insurance, memorials, and various types of property. This includes the St. Luke's Endowment Funds and Memorials and honors giving program.

WILL-POWER. The Planned Giving Team is proud to announce that they have arranged for a Will-Power seminar that will be presented in **Fellowship Hall, 2:00pm, Sunday, October 20.**

On average, a person works more than 40 years to accumulate assets and spends ten years conserving what has been earned, but does not spend even two hours to plan for distribution of those assets. The chaos that often occurs following the death of a loved one can be burdensome.

This burden can be eased, however, through proper planning which includes the implementation of an estate plan. The basic document in any such plan is a will or a trust.

At this seminar you will have a chance to learn how an estate plan can shape your family's legacy. Dale Levy, a planned giving director of the United Methodist Foundation and an attorney will lead the seminar.

A packet of information will be provided to each participant at the seminar. One publication will be *A Christian Guide to Wills and Trusts*. This publication will encourage you to think about how you want your assets to be distributed at death and assist you in gathering the information your attorney will need to prepare a will or trust that accomplishes your goals.



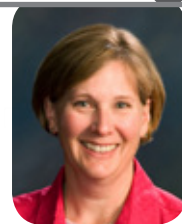
James Ramsey
Director of Music
& Arts Ministries



Kenrick Mervine
Associate Dir. of
Music Ministry/
Organist



Jennifer Ferguson
Associate Director
of Music Ministry



Kay Coryell
Dir. of Handbells
& Children's Music
Ministry

Music at St. Luke's is back in the swing!

After a relaxing summer break, all of our lovely music ensembles have once again kicked it into high gear. The 9:30 and 11:00 services will regularly feature our Chancel Choir and Worship Band, and we will be seeing regular appearances from the Brass Ensemble, Kids Prayz, Orchestra, Tintinnabulators Hand Bells, and more. We have an abundance of talented musicians and performers who are part of our Ministers of Swing jazz band, as well as our Puppet Ministry program and our Wesley players drama program. St. Luke's is so blessed to have so many dedicated and talented performers bringing music, art, laughter, and joy to our church services and community.

Thank you musicians, artists, and performers who make St. Luke's such a special place to worship.

Questions about joining one of our many groups? Visit our website www.stlukeshr.com for a comprehensive list of performing groups and rehearsal schedules or contact Jim Ramsey at jim@stlukeshr.com



Mark Your Calendar

Performances of "The Importance of Being Earnest" are Friday and Saturday, October 25 & 26 at 7:00pm, and Saturday, October 26 at 3:00pm.

Draw the Circle Wide with Extravagant Generosity

An Interview with Rev. Janet about Giving

Why is giving so important? Giving is the nature of God. Our God is a God who gives. Generosity is evidence of the Spirit's work in a person's life. Look at 2 Corinthians 9:6: "Whoever sows sparingly will also reap sparingly, and whoever sows generously will also reap generously." When we pursue the ways of our culture, we spend our lives conjugating three verbs: to want, to have, to achieve. Jesus' teachings lead us in a better way. He tells us to conjugate one verb: to love.

Can you speak to the spiritual principle that you can't spend more than you make? In 2005, Americans hit a negative savings rate for the first time in our history when we spent \$1.22 for every dollar earned, the result of our self-focused, undisciplined spending and the debt it generated. We improved on that slightly after the recession hit, but within a year or two many of us had allowed our spending and debt to spiral out of control again.

When we live congruently with our values, our financial resources will grow. When we don't, then God won't entrust them to our care.

What would you say is the fundamental reason we are to give abundantly? The fundamental reason we are to give abundantly from God's harvest is because you and I are created in the image of God and are visible expressions of God's nature in the world. Ours is a God of generosity; ours is a God who gives.

Can you offer us a game plan? I suggest a system that Christians have been using for centuries. It isn't something I invented. It's called the 10-10-80 plan. The first ten percent of everything that comes into your hand, you give to God as an expression of faith and gratitude. The second ten percent you pay to yourself, in the form of saving for the future. The remaining eighty percent is what you live on.

How is giving a part of a growing spiritual journey?

I believe that when we become Christian, there is one new birth but many conversions. I became a new person in Christ at my Confirmation in 1965, but I wasn't converted in my wallet until 1991.

I was serving as the ministry director for the United Methodist churches in Colorado, Utah, and Wyoming. At the first staff meeting, Bishop Mary Ann Swenson told her story toward generosity. Then she made a request of all of us on her staff team, "If you are not tithing 10% of your income to the work of God in the world, I want you to begin now. We don't need any more people in the church who preach, 'Do what I say, not what I do.' I want you to walk the walk of a disciple."

That simple conversation hit me hard. I was converted. I realized that loving God is not about saying the right words, accepting an abstract ideal, or claiming an emotion. Loving God is an intentional commitment to self-sacrifice for the well-being of others. That is why the Bible tells us, "You will be made rich in every way so that you can be generous in every way" (2 Corinthians 9:11).

There's an old story about a conversation between a chicken and a pig. The chicken says, "Let's do breakfast." The pig replies, "That's easy for you to say. You just make a donation. For me, it's a total life sacrifice." If we are to be followers of Jesus, then we are the pig, not the chicken. We have to move from donation to sacrificial service, from consuming to investing.



Upcoming Events!

- * **Sept. 20-22: Jr. High Retreat**
- * **Sept. 28: Pumpkins Arrive**
- * **Nov. 1-3: Ignite Sr. High District Retreat**
- * **Sign up to receive our emails and Check www.stlukeshr.com and click on "Youth" or "SLY" for up-to-date info on programs, activities, opportunities and more!**

Sundays:

- **9:30-10:30am – SLY AM**
Talking about teen life and the bible!
- **6:00-7:30pm – SLY PM**
All sorts of fun activities are going on this month!! Check out our website for details.

Wednesdays:

- **5:30-6:30pm – Homework Hour**
- **6:30-8:00pm – All sorts of fun and 'chill' activities**

ON THE SLY: Pumpkins are in Sight!



School is in full swing and so are the youth of St. Luke's! With the new school year comes our annual Messy Games Night! And when we say messy, we mean messy! The church back yard was transformed into a field of raw egg tosses, human ice cream sundaes, and chocolate pudding slip-n-slides!

Towards the end of September we will have our 1st annual Jr. High Retreat at the beautiful Ponderosa Retreat Center in Monument, CO. The 7th and 8th grade youth of St. Luke's will be 'drawing the circle wide' as they build stronger relationships with each other and God, while having a ton of fun of course! This trip is open to all 7th and 8th graders. RSVP to Dave so we can reserve your spot!

Keep your eyes out for the Semi Truck of Pumpkins! It will be arriving September 28th! That, of course marks the opening of the Pumpkin Patch! It is because of St. Luke's and the community participating in the Patch that we were able to have three very successful youth mission trips this summer! We appreciate it more than we can express and look forward to seeing you at the Patch this year!

We are SLY (St. Luke's Youth) and we are an inclusive group for all 7th-12th graders that focuses on fellowship, fun, and finding out what this God thing is all about! As always, we have lots going on and are so excited to grow closer while having fun and being the hands and feet of Christ!

—Yours in Christ, Dave & Amy



Dave Laurvick
Director of
Youth Ministry



Amy McMullen
Assistant Dir. of
Youth Ministry



Guatemala continued from page 1 partnered with previously, had worked with volunteers to build this beautiful school and provide resources like books, computers, and band instruments. It was so neat to see the work that fellow St. Luke's members had contributed to and what a success this school has become! It was one of my personal favorites. I was so moved by this school that I plan on going back to Guatemala and volunteering there this upcoming January.

Outside of all of our cool visits around Lemoa, we worked hard on some projects for local kids and their families. Every member on the team acquired an appreciation for cement trucks, as we had to mix pile, after pile, after pile, after pile of cement for our projects. The hard labor paid off because at the end of the week, we had the brick walls of a house put up and the cement floors of a school finished to perfection. The hard work brought us together as a team and left something for the people we met to remember us by.

Brick walls will last for a while indeed, but I believe that while we were in Guatemala we built something that lasts even longer than cement. The soccer games, kid's crafts, hugs, laughs, and tears all touched every teammate while we were there. God's love could be seen through everyone. It always amazes me how close you become with your fellow missionaries on these trips. We were able to build relationships that I know we will have forever.

Serving in Guatemala this summer with such amazing people has given me memories that will last a lifetime, and people that will stay close to my heart. My ideas about justice, love, grace, hope, and faith were all challenged in a positive way as our team sat together trying to understand our experiences as they unfolded. Although we will never know all of the answers, one thing we all learned from our mission trip in Guatemala was how to love people and share God's love with people, regardless of race, age, language, school, and even demands for "màs cemento"! (more cement!)



Seasoned Voyagers



Join the Team

A 55+ MINISTRY

Seasoned Voyagers are looking for seniors who would enjoy being on the core team. The core team is much like a steering committee involved with providing direction for the group in terms of activities and functions. We meet on the first Sunday of each month from 12:15-1:15pm. Please contact Rich Krening, Jon Streaty or Lynda Fickling if you are interested.

Seasoned Voyagers Third Annual Leaf Peeping:

Save Tuesday, October 1 for the Seasoned Voyagers bus trip to Golden, Colorado Railroad Museum, picnic and visit to the Foothills Art Museum. Sign up in church on Sunday, Sept. 15, 22 or 29 or online at rovetta@juno.com or call Joyce Rovetta 303-470-5705.

Sign up online to receive our emails:
Go to www.stlukeshr.com and pull down Quick Link to email lists.

More from Les: Fred's Mythological Dream - Pt. 2 by Rev. Les Ludlam



For the next few days after his dream encounter, Fred pondered what he had experienced. Was this just a figment of his imagination? Was it real?

He saw no obvious way to bring resolution to his nighttime experience so

he decided to simply wait. "OK, God, I'll try to listen with my heart and mind." He spoke out loud, feeling a little strange, wondering if he were making too much of last night's dream. Then he went back to writing the eulogy for Bill's memorial service.

The next day, Fred drove to the nearby shopping area. He stopped, got out and started walking to the store. As he passed a small sidewalk café, he noticed a young woman, dressed in a business suit, sitting at a small table at the front of the café. "Fred, come here," she called out.

He walked over to the table, and as soon as he sat down, she began. "Your dream was real," she said, "I know that you have come to understand my creation enough to be able to communicate a new myth that carries truths about Me and my will, and present it in ways that people today can meaningfully use as they live their day-to-day lives."

A waiter walked up and asked, "Will there be anyone joining you sir?" "No," Fred replied, "and I'd like an iced tea, no sugar, please." "Of course," the waiter replied and walked back inside the café.

"You have questions and I will answer them in ways that are best for you to understand, so go ahead," the woman continued, "You want to know what to say about Bill's existence after his death."

"Bill's soul is like energy, it cannot be destroyed, only changed. All Bill was as a person lives on in your memories and stories, and his soul exists in a new form and will continue to exist. But you cannot touch him, for he now exists in a dimension beyond that of the space and time continuum you experience now. And it is good."

The waiter arrived with Fred's tea and asked, "Will there be anything more?" Fred turned, "No, but thank you." When he turned back, the woman was gone.

"So, if God is present everywhere, and hears all things, how does he respond to people's prayer?" thought Fred, "how is God's will accomplished?"

He stood up and began walking to the store where he intended to buy a new tie to wear at the memorial service. As he turned at the street corner, he almost fell collided with an old man, standing at the curb. "Oops! Excuse me," said Fred, "I didn't see you till now." "Quite all right, I know you have a lot on your mind, Fred; I'll walk with you while we talk of the questions you have of me." Fred smiled a smile of recognition and said nothing.

"Whether or not your payers are heard and answered is easy, the old man continued. "Yes, they're heard and answered, but those who have prayed don't necessarily receive the desired answer. I'm not a cosmic vending machine; it's My will that is done, not human will! Prayer is not intended to serve the wants of the person who offers it," the old man spoke in a stern voice, "Prayer is praise, prayer is a means of loving others; prayer is an honest, open conversation with me. Fred, I answer your prayers through the people and situations that you interact with each day. People are my hands and feet and voices that get things done in this world. I communicate with you through your family, trusted friends, and sometimes, total strangers. Any direct intervention in the affairs of this world on my part would destroy the balance I have created. Oh, watch the traffic light! It's about to turn."

Fred stopped, looked at the light and the Old Man was gone. When the light had changed and the "Walk" sign was illuminated, Fred crossed and continued to the clothing store. He selected a tie to wear at Bill's memorial service and proceeded to the cashier's counter.

He noticed a child with long, blonde curly hair, standing next to the line, the child looked up at Fred and smiled, "You need to take this seriously Fred, you agreed to listen with your heart and your mind and to respond once you've heard!"

"Here we go again!" he thought, as he put the tie on the counter. "I'll be back in a moment," he said to the clerk, and sat down with the child.

"Fred, I have answered your questions, you have experienced the connection you have with all your brothers and sisters in creation, I have told you of your friend, Bill, and of life after death, I have told you that I hear your prayers and disclosed how I communicate with you and your brothers and sisters. And you have told me that you will carry my message." Fred swallowed hard, "Yes."

"Fred, take this message to all that I will bring to you and repeat it to them as often as you can." Fred nodded his understanding. "My will is that all my children shall love each other, with action and words that put the other before the self. My children shall treat others as they would want to be treated – with hospitality! My rules are simple and are meant to establish a framework where my children can life together peaceably and fruitfully. Each culture and community in this world knows my rules, but many have misused them and added their own interpretations to satisfy their needs and means. You shall speak out confidently, knowing that you are speaking in My Name. When you find human-made rules, doctrines, laws and acts that go against my will, speak out that all my children shall act in love for each other with deeds and words that put the other before the self."

"That's a big task," said Fred. "And a dangerous one, too, replied the child, but it is the most important thing you will do with your life. Now go and speak my message. I will be with you."

Fred stood up, the child was gone. There were tears in his eyes. His eulogy for Bill was going to be quite different!



Dave Cupp
Director of Finance



Bonnie Haney
Accounting Clerk

Financial Update

Welcome Bonnie! I'm very pleased to announce that Bonnie Haney has joined our Finance Department Staff. She has an extensive work history in finance and is filling our Accounting Clerk position. She and her husband Rick joined St. Luke's in 2012 after moving to Colorado.

Happy 30th Anniversary St. Luke's— *BELATED PARTICIPATION IS*

ENCOURAGED! It is not too late for you to participate in our 30th Anniversary Celebration. We have received over \$40,000 in gifts and issued a large number of new grocery cards.

Keep in mind that participating in the grocery card program is a way for your 30th anniversary participation to continue giving at no cost to you. When you enroll in the program by getting your free starter card for either Kings or Safeway here at St. Luke's, we will get at least a 5% rebate to go into our general fund every time you reload the card at the grocery store. Participation is so easy. All you do is get your free starter card you picked up at our grocery card table reloaded as needed at the grocery store service counter using your credit card, check or cash. If you forget to stop at the service counter they can reload at the cashier if you let them know before they ring-up your purchase. You can use the card to purchase store items and gas. Unfortunately, you can't use it to purchase gift cards.

Pick and Choose Your Method Of

Giving to SLUMC. We have many ways for you to make your giving to SLUMC easy and convenient. You may want to consider one of these convenient methods for your contributions.

In addition to cash and checks, we offer online credit card transactions, stock transfers and scheduled automatic withdrawals from checking or credit card accounts. The following is a general summary:

1. General Fund and Capital Campaign: All methods.
2. Grocery Cards: Cash, check, scheduled automatic withdrawal from checking accounts.
3. Special Events: Depending on the type of event may include cash, check, PayPal and online credit card transactions. The method(s) available at each event will be announced at the time of the event and are at the discretion of the sponsor.
4. Plus: We're anxious to consider any reasonable method you know about that we haven't adopted.



St. Luke's United Methodist Church
8817 S. Broadway • Highlands Ranch, CO 80129
303-791-0659 • www.stlukeshr.com

*St. Luke's United Methodist Church welcomes you to our Christian family,
where we share life. Wherever you are in your faith journey,
you are accepted and encouraged to grow spiritually.*

*Join us in growing together toward full humanity through living
the teachings of Jesus: Love, Acceptance, Justice and Hope.*

for the most up-to-date calendar check www.stlukeshr.com

SEPTEMBER 2013						
Sunday	Monday	Tuesday	Wednesday	Thursday	Friday	Saturday
15 8:15am: Contemplative Worship 8:00, 9:30, 11:00am: Worship –Rev. Dr. Janet Forbes 9:30am: Adult Sunday School Classes 9:30am: Youth & Children's Sunday School 11:00am: Godly Play 11:00am: Wholehearted Parenting 3:30pm: SLYJO Rehearsal 4:30pm: Soul Purpose Rehearsal 5:30pm: SLY, Jr. Kick Off 6:00pm: SLY PM 6:30pm: Revolution	16 9:00am: Mindful Presence 6:00pm: Common Table 7:00pm: SLIP Improv	17 6:00pm: Youth Bells 7:00pm: Tintinnabulators 7:00pm: Learning with St. Luke's Team	18 5:30pm: SLY Homework Hour 6:30pm: SLY Wednesdays 6:30pm: Kidz Prayz Choirs 6:30pm: Cherub's Choir 6:30pm: Parents of Teens/Young Adults with Depression/Bipolar 6:30pm: Gap Group 7:25pm: Tone Chimes	19 6:30pm: Children's Ministry Team 6:30pm: Contemplative Fellowship 7:00pm: Young Adults 7:00pm: Puppet Team 7:00pm: Adult Choir Rehearsals	20 9:00am: Playgroup 10:00am: Compassionate Life Discussion 6:45pm: Family Movie Night "Epic"	21 8:00am: Instrumental Group Rehearsals 10:00am: Wesley Writers 6:00pm: Harvest Moon Hike & Picnic at O'Fallon Park
22 Third Grade Bible Sunday 8:00, 9:30, 11:00am: Worship –Rev. Ryan Canaday 9:30am: Adult Sunday School Classes 9:30am: Youth & Children's Sunday School 11:00am: Godly Play 11:00am: Wholehearted Parenting 3:30pm: SLYJO Rehearsal 4:30pm: Soul Purpose Rehearsal 5:30pm: Youth Dinner 6:00pm: SLY PM 6:30pm: Revolution	23 9:00am: Mindful Presence 7:00pm: SLIP Improv 7:00pm: Women's Evening Book Club	24 7:00am: Men's Group @The Egg & I 6:00pm: Youth Bells 7:00pm: Tintinnabulators	25 5:30pm: SLY Homework Hour 6:30pm: SLY Wednesdays 6:30pm: Kidz Prayz Choirs 6:30pm: Cherub's Choir 6:30pm: Gap Group 7:25pm: Tone Chimes	26 9:00am: Engaging Spirituality begins 6:30pm: Contemplative Fellowship 7:00pm: Young Adults 7:00pm: Puppet Team 7:00pm: Adult Choir Rehearsals	27 10:00am: Compassionate Life Discussion	28 8:00am: Instrumental Group Rehearsals noon: Pumpkins Arrive! 2:00pm: Ageless Singles
29 8:00, 9:30, 11:00am: Worship –Rev. Dr. Janet Forbes 9:30am: Adult Sunday School Classes 9:30am: Youth & Children's Sunday School 11:00am: Godly Play 11:00am: Wholehearted Parenting 3:30pm: SLYJO Rehearsal 4:30pm: Soul Purpose Rehearsal 5:30pm: Youth Dinner 6:00pm: SLY PM 6:30pm: Revolution	30 9:00am: Mindful Presence 7:00pm: SLIP Improv	OCT 1 Seasoned Voyagers Leaf Peeping Trip 6:00pm: Youth Bells 7:00pm: Tintinnabulators	2 5:30pm: SLY Homework Hour 6:00pm: Feeding of the 5000 Volunteer training 6:30pm: SLY Wednesdays 6:30pm: Kidz Prayz Choirs 6:30pm: Cherub's Choir 6:30pm: Parents of Teens/Young Adults with Depression/Bipolar 6:30pm: Gap Group 7:25pm: Tone Chimes	3 Feeding of the 5000 Taping Boxes 10:00am: Common Thread 6:00pm: Beth Moore Study begins 6:30pm: Contemplative Fellowship 7:00pm: Young Adults 7:00pm: Puppet Team 7:00pm: Adult Choir Rehearsals	4 Feeding of the 5000 Food Collection 9:00am: Playgroup 10:00am: Compassionate Life Discussion	5 Feeding of the 5000 Food Collection 8:00am: Instrumental Group Rehearsals 9:00am: Simply Saturday
6 World Communion Feeding of the 5000 Food Collection 8:00, 9:30, 11:00am: Worship –Rev. Dr. Janet Forbes 9:30am: Adult Sunday School Classes 9:30am: Youth & Children's Sunday School 11:00am: Godly Play 2:30pm: SLY, Jr. 3:30pm: SLYJO Rehearsal 4:30pm: Soul Purpose Rehearsal 6:00pm: SLY PM 6:00pm: Celebration Dinner & Revolution	7 9:00am: Mindful Presence 7:00pm: SLIP Improv	8 6:00pm: Youth Bells 7:00pm: Tintinnabulators 7:00pm: Missions Team	9 5:30pm: SLY Homework Hour 6:30pm: SLY Wednesdays 6:30pm: Kidz Prayz Choirs 6:30pm: Cherub's Choir 6:30pm: Gap Group 7:25pm: Tone Chimes	10 6:00pm: Love & Logic 6:30pm: Contemplative Fellowship 7:00pm: Young Adults 7:00pm: Puppet Team 7:00pm: Adult Choir Rehearsals	11 10:00am: Compassionate Life Discussion 5:45pm: Parent's Night Out	12 8:00am: Instrumental Group Rehearsals 10:00am: Itch to Stitch 10:00am: Genealogy 101