



The Chronicle

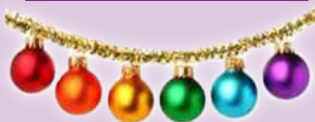
ST. LUKE'S UNITED METHODIST CHURCH

DECEMBER 2015/JANUARY 2016

Inside This Issue:

From Rev. Janet.....	2
From Rev. Ryan.....	3
From Rev. Sallie.....	3
Learning Opportunities..	5
Children's Ministry.....	6
UMW Update.....	7
More With Les.....	8
CSE Update.....	9
SLY.....	10
Music & Arts.....	11

and much more!



Join One of Our Christmas Eve Teams!

Come serve Dec. 24
at 1:00, 3:00, 5:00,
7:00 or 10:00pm

Greeters: Welcome all to St. Luke's. We will need you here 20 minutes prior to the service. Contact Lisa Phillips lisaphill4@aol.com

Ushers: Assist in welcoming and with various duties during the service. Will need you here 20 minutes prior to the service. Contact Dean Markham markhamdean@yahoo.com

CandleBin Team: Help replace and organize the small candles we distribute for the services. 20 minute time slots beginning at 3:15, 4:15, 5:15, or 6:15pm. Contact Lynda Fickling 303-791-0659 x20 lynda@stlukeshr.com

Parking Lot Attendants:

Help direct traffic in our parking lot for the 1:00, 3:00, 5:00 or 7:00pm services. Contact Sandi Miyaki sandi.miyaki@realtor.com



Wow! Thanks to the participants of our annual Cantata on Dec. 13. This marvelous musical worship experience illuminated the Advent season with hope, peace, love and joy!



Go Light Your World

Advent & Christmas 2015

A little child will lead them. (Isaiah 11:6)

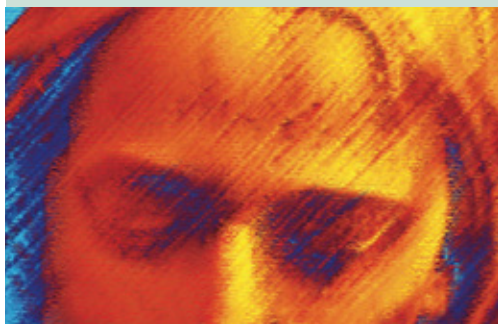
Our worship conversations and scripture stories through Advent and Christmas paint a picture of the world into which God came. Like our own time, this world seemed an unlikely, or even hostile environment, for this fragile incarnation of peace and hope. This season, we will proclaim the entrance into this world again of the Light for which we still so desperately yearn. As communities, we each bear the light of memory and hope. Together, we keep the vigil. We add more and more light into an unsettled and unsettling time by asking: *What are we called to bring into this world?* When we put our generosity and light together in a vigil of peace and hope, love can't help but overflow into the world. *Go light your world!*

Advent and Christmas Calendar

Thursday, Dec. 17	7:00pm: Performing Arts Academy High School Holiday Festival
Sunday, Dec. 20	Advent 4 – Candy Cane Sunday: <i>Conceived by the Spirit</i> (Dr. Janet Forbes) <i>Matthew 1: 18-25</i>
Thursday, Dec. 24	Christmas Eve Services: Children's - 1:00 and 3:00pm Traditional - 5:00 and 7:00pm Communion - 10:00pm
Sunday, Dec. 27	First Sunday of Christmas <i>By Another Route</i> (Pastor Tonya Whaley) <i>Matthew 2: 1-12</i>
Sunday, Jan. 3	Epiphany Sunday – Celebration of the Kings and Holy Communion <i>A Voice was Heard</i> (Dr. Janet Forbes) <i>Matthew 2: 13-23</i>

Celebrate Epiphany: The Passionate Jesus

January 10-February 7, 2016



Rivers of living water will flow out from within him. –John 7: 38

The brink of a new year always offers us the opportunity to look again at our lives and our motivations. In this series of worship experiences, we will explore what it means to live authentically and passionately, with Jesus as our guide. Rather than the ever-cool, calm, and collected spiritual teacher that Jesus is often portrayed as, we will experience Jesus as a passionate, direct, expressive, and deeply authentic provocateur and seek to embrace our own capacity for passion.



Advent Booklet "Welcome the Light"
Pick up your copy at the Get Connected Center. Suggested Donation 50¢.

Sunday Worship Services:

8:00am, 9:30am, 11:00am,
Contemplative Service
(Check website for dates & times)

Sunday School:

Adult, Youth & Children:
9:30am & 11:00am

Nursery available for:

8:00, 9:30 & 11:00am services

Church Office.....303-791-0659

Fax.....303-470-5615

Email.....office@stlukeshr.com

Website.....www.stlukeshr.com

Preschool Office.....303-791-1982

**Staff:**

Rev. Dr. Janet Forbes.....x13
Senior Minister Emergency: 303-241-9312

Rev. Dr. Sallie Suby-Long.....x32
Associate Minister Emergency: 303-475-0141

Rev. Ryan Canaday.....x12
Associate Minister Emergency: 303-944-5061

Rev. Pat Shaffer.....720-988-5430
Visitation Pastor

Rev. Tonya Whaley.....720-300-9393
Student Pastor

Sharon Oliver.....x27
Director of Children's Ministry

Samantha Leahy.....x40
Director of Early Childhood Ministry

Stephanie Kirk.....x11
Children's Ministry Coordinator

Dave Laurvick.....x14
Director of Youth Ministry

Amy McMullen.....x19
Assistant Director of Youth Ministry

Jeremy Brown.....x19
Associate Director of Youth Ministry

Kay Swanson.....303-791-1982
Director of Little School

Dr. James Ramsey.....x23
Director of Music & Arts Ministries

Kenrick Mervine.....x33
Associate Director of Music Ministry & Organist

Kay Coryell.....x36
Director of Handbells & Children's Music Ministry

Brenda Schafer.....x10
Office Administrator

Sheri Henry.....x24
Director of Finance

Kristi Pawley.....x16
Accounting Clerk/Music & Arts Admin. Assistant

Lynda Fickling.....x20
Director of Servant Ministry/Spiritual Director

Barry Curtis.....x39
Facilities Manager

All submissions for the combined
February 2016 issue
of *The Chronicle* are due January 20
Editor: Sharon Oliver
chronicle@stlukeshr.com

The *Chronicle* is published 10 times per year
and is emailed to those on our email blast list,
and it can be found on the church website.
Printed copies are available at church entrances.
To receive *The Chronicle* via US mail,
please call or email the Church Office.



Rev. Janet Forbes
Senior Pastor

Resolutions for the New Year

What counts is whether we have been transformed into a new creation. –Galatians 6:15

I'll admit I've never been a big resolutions kind of person.. at least not at New Year's. My resolutions tend to happen throughout the year. Sometimes I choose to make changes as a part of my Lenten practices. Sometimes, I change things at the start of fall when there is a sense of new beginning. Sometimes it happens irrespective of seasons. I simply realize something has to change in life and I work at developing a new pattern.

I believe that the New Testament writer, Paul, would have been a big advocate of resolutions, not because it is a good New Year's tradition, but because it's the heart of the good news. God made us with the possibility to change.

Just think about your physical body. I used to wear shorts all winter long! I just added a fleece jacket and hat and enjoyed the crisp temperatures. Now, my internal thermostat is not as trustworthy as it once was. I now layer clothing... and lots of it... because the cold got colder! Our bodies understand change.

God made our spirits the same way. We have the possibility of changing. In fact, Paul would say if we aren't changing, if we aren't become better, if we aren't becoming more Christ-like, then something is wrong! What counts is whether we are being transformed!

But transformation isn't easy!

New York Times columnist, John Tierney, wrote an article a few years ago about resolutions and will power. One, people who make resolutions are more likely to make some kind of improvement. In other words, we don't change unless we want to change. Two, if you get through January keeping a desired resolution you are more likely to make it through the year. Don't try to lose thirty pounds this year. Try to lose a couple of pounds this month. If necessary, break it into weeks. Third, the less complicated we make our resolutions, the more likely the success. If our change requires lots of equipment, gadgets, dependency on other things beyond our control, we aren't likely to stick with it.

Then, after that encouragement, Tierney soberly states that most people we fail in keeping resolutions. The reason is will power. We depend on our determination alone and we lose the energy to stick to it. He uses the term, ego depletion, which describes the limit of our own energy and strength. We need to plan on those limits and put safeguards in place to keep us from depending solely on will power.

I like the thought of ego depletion. In social psychology, it might explain what keeps us from changing. But, in the spiritual life, it is a good description of how to change! When the disciples of John the Baptist saw his followers starting to follow Jesus, they were jealous. "Something must be done," they complained. But John said, "He must increase and I must decrease." Ego depletion! This is what allows change to happen. Focusing not on our power and ability, but on our need for God's help.

Are my thoughts God's thoughts? Do my behaviors honor Jesus? Are my priorities and wants aligning with God's heart? Rather than seeking God's help to grant wishes, ego depletion means seeing everything in life as a way to further God's wishes.

As we begin a new year, reflect on Paul's words: What counts is whether we have been transformed into a new creation. New Year's is a good time to celebrate the heart of the good news: we can all change! And we should! It happens with a little ego depletion by wanting Jesus to increase within us.

So, what are your resolutions?

Happy New Year – Go Light Your World,

Rev. Janet

DATE CHANGE:

Guatemala mission trip is now April 15-24.

Have you said ... "Someday, I'll help build houses in Guatemala"?
Make someday – "Today".

Join us as we journey to Guatemala to work with local people and build homes in Lemoa. We will spend time with local children at the Caserio Rosario school, visit the famous market in Chichicastenango and have some free time to explore historic Antigua. Prior construction experience is not necessary. This trip is open to anyone (ages 15 and up) and applications can be found online at trips.puravida.org/slumc Contact Jeff Seefeldt, jeff62301@gmail.com or 217-242-5761 or Rev. Ryan

Burritos / Crafts Sales

The Annual Guatemala Burrito Breakfast will be held on Sunday Jan. 3, 2016. All funds raised will support the construction costs of upcoming Guatemala Mission trips. Burritos will cost \$5 on the day of the breakfast; \$4 for pre-orders! Eat at the church or take a dozen home to your family and friends. Burrito pre-sales will be available in the Narthex between services in December. Also, consider buying some handmade Guatemalan crafts as Christmas presents or contributing through the Giving Tree; available throughout December.



Rev. Ryan Canaday
Associate Minister

What Are You Waiting For?

In recent worship services here at St. Luke's, I told you the story of our family gathering around the dining room table during the first week of Advent to light the candle of hope. It was just a couple of weeks ago. As we lit the candle, we went around the table and each expressed and voiced our hopes to God for our world. It was a beautiful moment... and a messy moment. Shiloh, our almost 3-year-old, shared her hope—it consisted of a bowel movement



and the outcomes of such a movement. She thought it was hilarious. I'm sure God did too. Then Selah, our 5-year-old daughter, asked some of the hardest questions—like she does. Here I am explaining the beauty of Advent, that we are waiting and preparing for the coming of Jesus—the coming of hope—into our broken world. Selah interrupts, “But Poppy, you said Jesus was always with us. What do you mean, we are waiting?” Five year olds have a way about them, don't they? They have a way of making us us better theologians, better thinkers, and better communicators. Children have a way of keeping things kinda messy, which is exactly the way I think Advent should be! There's no way around it. There's no escaping it. We wait. We prepare. We hope.

And it's a great question, right? Jesus is always with us... what do mean, we're waiting?

I could spend the next couple of paragraphs attempting to answer that question, like I did with Selah. But I'd rather follow up with a few more questions for you to ponder during the remainder of Advent.

When you look out into the the world, what are some of the things you long for? What are some of the things that cause your heart to ache? And, let's be honest, if you're able to look out into the world right now and not experience some level of heartache, we may need to check your pulse. What are the things that leave you asking, “Why?”

We wait. Not the lazy kind of waiting where we just sit around and wait for others to act while we twiddle our thumbs. No, we wait for hope to break through as we look for those places where God is moving in the world (by the way, I'm convinced God is everywhere, all around us. Often times we simply haven't stopped enough to become aware of God's movement). We name those places of darkness and heartache—we expose the darkness and wait for light to burst forth! We embrace the idea that the world is a world. And in order for the world to truly be a world, it must have the incredible power to create pain and suffering and deep wounds. But it also has the incredible power to create joy and beauty and deep healing. While we wait, we point out the darkness, we expose it. And at the same time, in the same breath we lift up, we celebrate the stories of goodness, grace, and beauty.

Jesus is with us, and yet, we are waiting. It's the already-but-not-yet paradox. It's holding the tension between heartache and joy, darkness and light—and trusting that darkness doesn't have the final word. It's the willingness to sit in and with the messiness—even the messiness of 2-year-olds talking about bowel movements and 5-year-olds asking the hardest questions. We wait. We prepare. We hope. So... what are you waiting for?

Grace & Peace, *Rev. Ryan*



Rev. Dr. Sallie Suby-Long
Associate Minister

For Your Health & Wellness

As a new year begins we often think about goals we hope to incorporate in our lives. For many of us these goals are related to our health and wellness. According to recent research, attention to the mind, body, spirit

connection and our overall well-being is highly worthwhile! Through engagement in practices of prayer & meditation, presence in nature, and connection to others, we automatically increase our mental, emotional, social, physical and spiritual health.

As a faith community, we enthusiastically support your commitment to caring for all aspects of your wellness. That's why we invite you to participate in any of the following opportunities. Give me a call or send me a text or email and I will happily connect you with an opportunity that aligns with your intentions for the new year. You may reach me at 303-475-0141 or Sallie@stlukeshr.com. Here are a few ideas for your consideration:



- **Center for Spiritual Engagement** – Ongoing opportunities for experiences promoting well-being, connection, healing and inspiration. Join us for workshops, retreats, seminars and classes featuring excellent facilitators. We offer outdoor adventures, book discussions, meditation and yoga classes, and creative experiences that engage participants in learning new practices that contribute to health and wholeness. Check the website at stlukesce.org and also see details in this *Chronicle* issue, page 9.
- **Spiritual Direction/Mentoring/Coaching** – Spiritual direction supports people in managing transitions, enhancing self-awareness, gaining new insights, making desired changes, and proactively addressing life challenges.
- **Counseling** – Rev. Sallie, Rev. Janet, Rev. Ryan, and Rev. Pat offer short-term, solution-based counseling, pastoral care, and referrals for individuals, couples, and families seeking support. Confidentiality is always respected.
- **Stephen Ministry** – provides confidential, one-to-one care to individuals in our congregation and community. Stephen Ministers are volunteers who have specialized training in listening and providing emotional and spiritual care. Contact a pastor or Stephen Leader if you or someone you love would benefit from this ministry.
- **Prayer Team** – gathers regularly to pray for concerns of individuals, the congregation, and the community. Requests for prayers may be sent through the website, written on a prayer request card or shared with a member of the pastoral and staff team.
- **Support Groups and Classes** – St. Luke's offers support groups and classes focused on a variety of topics including 12-step programs, divorce recovery classes, and grief support groups. Information about current groups is available on St. Luke's web site and in the Care Ministries brochures in the church entry.
- **Faithful Friends** – offer care and friendship to individuals in care centers, those who may be dealing with long term health challenges, and individuals who may have difficulty getting to St. Luke's on a regular basis.

If St. Luke's does not offer the type of health and wellness opportunity you are seeking, the pastoral team will make every effort to connect you to additional resources, networks within our community.

Warmly, *Rev. Sallie*



Lynda Fickling
Director of
Servant Ministry/
Spiritual Director

Get CONNECTED

Walking on this Journey Together

As we close out the year 2015, I have to say that the awareness and practice of *communitas* has deepened

many relationships within our community. The relationships that encourage us, awaken in us dreams that we had forgotten, learning who we are and where we have been—where we are going...

and deepening our relationship with Jesus, learning that we are walking this spiritual journey together and not alone.

As we look forward to 2016, I encourage you to connect with a group either here or in the community or even your workplace, where you can experience *communitas* as a way of life—a way of looking into one another's lives and discovering that God did not intend for us to journey alone but for us to walk together on this beautiful gift of life.

Namaste, Lynda Fickling, lynda@stlukeshr.com
Director of Servant Ministry/Spiritual Director

Meet me for coffee anytime and we can talk about where your journey can begin... continue...!



Redesigning
Our
Future

ST. LUKE'S
TEAM
KICK OFF

JANUARY 23, 2016 8:30-11:00am

At St. Luke's we have folks serving on nearly 150 teams! (I'm sure we have more that are forming as we speak!) We could not function without your gifts, passions, skills, knowledge and dedication to this community. From Greeting folks on Sunday, to cleaning the kitchen, to serving on our Finance Team there is a place for you that God has waiting! And don't forget our Children and Youth! If you are a part of our community, you are a part of a team.

JOIN US in celebrating our **2016 Kick-Off of our teams on Saturday, January 23, 8:30-11:00am.** We will envision our future together. We will look at our mission statement through photography (Kristin Foster), discuss our worship redesign (Rev. Ryan & Dr. Jim) and imagine ways of weaving our faith into all aspects of our lives (panel: Scott Wesson, Faith Atkins & John Church). Music with Patrick Griggs. Breakfast will be created by our volunteers who serve on our Fellowship Events Team (FET). We encourage you to RSVP but we always have room for you. Contact Lynda Fickling 303-791-0659 x20 lynda@stlukeshr.com

October 30, 2015

**WALK
FOR SUDAN**
EACH STEP BRINGS HOPE

nubawaterproject
CLEAN WATER BRINGS LIFE

Dear Reverend Janet,

Please accept my deepest gratitude on behalf of Nuba Water Project for the continued support of the Walk for Sudan. Our 9th annual event was held on October 18, 2015 at Campus Middle School and Cherry Creek State Park. Close to 300 community members, both Sudanese and American, participated. We were honored to welcome several dignitaries; Congressman Mike Coffman, Emmy Award winning journalist Tamara Banks, and former Denver Nuggets Ervin Johnson and Walter Davis.

Special recognition goes to Emily Maddox for her leadership role in fundraising for this year's event. SLY collected over \$823, which helped us surpass last year's net proceeds of \$18,000. I continue to be impressed by the engagement of the youth during my presentations as they learn about the geopolitical situation in Sudan, the Sudanese government attacks on people in the Nuba Mountains, and how we are trying to help. I am even more impressed with their passion in fundraising, and their understanding that they can make a significant difference by supporting our work.

With proceeds from last year's funds, we were able to purchase and deliver 200 water pump repair kits to the Nuba Mountains, deliver Safe Water Drops to several village areas, and continue to support our student refugees with tuition scholarships. We plan to continue those projects in 2016 with this year's proceeds. In addition, I plan to travel to South Sudan in March to conduct much needed teacher workshops.

I am honored to present this certificate of appreciation on behalf of Nuba Water Project and hope that you will share it and this letter with others. Thanks again for your support of the people in Sudan.

Sincerely,

Martha Riley

Martha Riley
Walk for Sudan Event Director



Thanks from We Don't Waste Thanks so much for organizing the "turkey drive"! Between St. Luke's and a few other donors, Squeaky Bean and WDW were able to collect all the turkeys (or cash with which to buy turkeys) to feed 3,000 folks on Thanksgiving. WDW is truly fortunate to have such a close relationship with St. Luke's! WDW St. Luke's team continues to collect food after the Broncos home games and deliver to underserved populations.

Thanksgiving Blessings



Thank you to Seasoned Voyagers and our St. Luke's community for helping Sedalia families with grocery gift cards for the Thanksgiving holiday. Your generosity helped 21 families. Continuing in the spirit of thanks on Thanksgiving Day over 60 folks came together to make 100 lunches, provide socks and assemble hygiene kits for

those less fortunate that were handed out in civic center park the next day. Many stayed to enjoy a warm and delicious holiday meal together on Thanksgiving and after the meal we packaged and delivered a meal for more than 30 to the women's crisis shelter. How we use our blessings may be the true measure of Thanksgiving. Thank you for all who supported this day of thanks!

Learning Opportunities at St. Luke's in 2016

Visit www.stlukeshr.com to sign up for certain classes or visit the Get-Connected Center in the Fellowship Hall at St. Luke's or contact Lynda@stlukeshr.com with any questions.

Community Learning Groups

Sunday Mornings:

NEW: SERVANT BY DESIGN (SIGN UP ONLINE)

8-week schedule *Discover who you are... Why are YOU here? What do YOU do best? What are YOU passionate about? What do YOU value? What are Your priorities?* Begin your journey to a God-centered life by discovering how you are created to be God's hands and feet in the world. Discover your Life gifts and Spiritual gifts (*What you do best*) Personality type and Values (*The places or atmospheres that give you the most energy*) Passion (*The purposes God placed in your heart*). Re-affirm WHO you are!

Time/Place: Sundays 11:00am-noon 1/24-3/13

Cost: \$14

Facilitators: Renae Parra renaeparra@aol.com and Lynda Fickling Lynda@stlukeshr.com 303-791-0659x20

NEW: THE UNITED METHODIST CHURCH (SIGN UP ONLINE)

Monty Hoffman will facilitate this group that looks at history and beliefs of Methodism and how we approach them in the context of our St. Luke's community. All are Welcome!

Time/Place: Sundays – Feb. 21 & 28, 11:00am-noon

CHRISTIAN CONNECTION (DROP IN!) Adult class studying books of topical interest, chosen by the class. Our fall studies include *What We Talk About When We Talk About God* by Rob Bell and *The Evolution of Faith: How God is Creating a Better Christianity* and *If God Is Love* by Philip Gulley. All are welcome.

Time/Place: Sundays 9:30am Rm 213

Contact: Ron & Suzanne Humphreys 303-795-6486 rbhumphreys@comcast.net

OPEN MINDS: A SPIRITUAL DIALOGUE

(DROP IN!) Adult class that works to strengthen faith journeys through studies of religion, philosophy, science and history. We are discussing a video study series by Professor Bart D. Ehrman, "After the New Testament, Writings of the Apostolic Fathers." Past studies include *God and Empire*, *Falling Upward* and *Bridges Out of Poverty*. All are welcome.

Time/Place: Sundays 9:30am Rm 210

Contact: Raina Powell 303-795-8457 rainapowell@aol.com

SUNDAY SCHOOL (DROP IN!)

9:30am: JOY TREK (age 2-PreK)

PEAK (K-4th grade)

TWEENS (5th & 6th grade)

SLY AM (7th-12th grade)

11:00am: GODLY PLAY (PreK-6th grade)

During the Week:

NEW: DISCIPLE I (SIGN UP ONLINE)

32-week schedule
Disciple I is an overview of the Bible, beginning with Bible basics and proceeding through the Bible from the Old Testament through the New Testament. The readings will expose us to around 80% of the whole Bible. We assume no previous Bible study and all questions and perspectives are welcome and helpful in this study. I, Rev. Schawn Kellogg, am an ordained Deacon in the UMC and find joy in learning about what the Bible means by understanding what it meant when it came to be. I believe this shared journey will deepen our faith and our sense of community as we study, pray, question and apply the Bible's teachings to our own lives. I hope you will join me! **Cost:** \$40

Time/Place: Weds. 6:00-8:00pm 1/20-6/22 (off July) back on 8/10 -11/9

Contact: Rev. Schawn Kellogg skelloggic@gmail.com

GAP GROUP (DROP IN!) Discuss spiritual topics, chosen by the group. All are welcome. Preparation not required.

Time/Place: Wednesdays 6:30pm Rm 122

Contact: Bob Oliver boboliver@pcsisys.net

CONTEMPLATIVE FELLOWSHIP

(DROP IN!) A time of study and prayer for those following the path of the Christian mystic. She focuses on the concept of Divine Therapy, a shift in awareness and personal transformation that occurs when Centering Prayer is practiced on a daily basis. Books and videos are available to introduce newcomers into enriching fellowship. Recently we've looked at "From Healing to Holiness" by Cynthia Bourgeault.

Time/Place: Thursdays 6:30pm Chapel

Contact: Marshall Kuhn 303-931-5473 marshall.kuhn@hotmail.com

GENEALOGY 101 (DROP IN!) Who is my great-great-grandfather and where did he come from? Learn the basics for your start in researching your family tree.

Time/Place: 2nd Saturdays 10:00am Rm 206 (Conf. Room)

Contact: Sylvia Brady 303-955-0457 jonsyl@comcast.net and Les Ludlam 303-451-5141 lludlam@wyoming.com

WESLEY WRITERS (DROP IN!)

Share stories, learn techniques for writing, develop a biography, and receive tips on how and where to publish.

Time/Place: 10:00am-noon, 3rd Saturdays, at Littleton UMC, 5894 S Datura St, Littleton, CO 80120, Rm 113

Contacts: Sylvia Brady 303-955-0457 jonsyl@comcast.net or Les Ludlam 303-451-5141 lludlam@wyoming.com

Communitas Groups

NEW: PRAYING FOR YOUR ENEMY (SIGN UP ONLINE)

Jesus tells us to pray for our enemies. How are we to do this? How do we pray for individuals who have wounded us so deeply? How do we pray for groups of people that create terror in our world? Is it possible that wishing them well and praying for their transformation actually has something to do with our own well-being and our own transformation? In this Communitas group we will look at various ancient and contemporary prayers as we talk about and pray our way towards loving our enemies.

Time/Place: Wednesdays 6:30-8:30pm, Jan. 13-Feb. 10

Facilitators: Rev. Ryan Canaday 303-944-5061 ryan@stlukeshr.com and David & Dianna Slade

NEW: SCRIPTURE WITH ART (SIGN UP ONLINE)

We will join together to explore the message of the sermon series through art. We will start the series with an exploration of watercolor, but I encourage you to bring and share your medium of choice (color pencil, beading, watercolor pencil, pencil, etc.). No experience needed. A time to join together, rest in art, in community and engage in an exploration of deepening our understanding of that day's message through art.

Time/Place: Sundays, noon-1:00pm, Jan. 10-Feb. 7

Facilitator: Tonya Whaley 720-300-9393 tonya@stlukeshr.com

Children's Ministry News

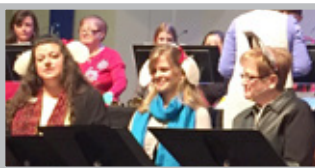
Praise, Play & Prayers with St. Luke's Kids

Children Shine Their Light!

Our St. Luke's children have been sharing their stories, their faith and their gifts this joyous holiday season.

It started with a fun Family Movie Night with "Inside Out" - we had a full house! And then we helped gather food to fill 100 Thanksgiving dinner boxes for DenUM (SLY, Jr.

went down with SLY to put the boxes together - see photo on pg. 10), and the SLY, Jr. are working on their Winter Break project of weaving plastic bags into "yarn" to make a mat for the homeless with our Itch to Stitch ladies. Our littlest preschoolers all the way up to our 6th graders helped kick off Advent with the Tree Lighting Service - that included our impromptu Christmas Pageant. What a joyous event! Where else will you see Rev. Janet, Rev. Sallie & Pastor Tonya portraying 2 sheep and a donkey? Thanks to all who helped make that event happen. Our Family Advent Devotionals have been a beautiful pause during the week to remember the meaning of the season and the Holiday Shop was a big hit as always! SLY, Jr. held a crazy fun Christmas Party and will go to Jumpstreet on Jan. 10! And Sunday School has been inspirational with the lighting of our Advent candles, the blessing of our Christmas tree and learning about this glorious season. Don't miss out on Candy Cane Sunday and our Children's Christmas Eve services with our puppet ministry! Merry Christmas and Happy New Year to ALL!



Sharon Oliver
Director of
Children's Ministry



Samantha Leahy
Director of Early
Childhood Ministry



Stephanie Kirk
Children's Ministry
Coordinator

St. Luke's Kids
Growing with God

Our Online Servant Schedule for 2016 is UP!

Go to stlukeshr.com, click on "calendars" across the top and then click on "children's ministry servants" and sign up! We need YOU and Sunday School is an awesome place to be on a Sunday morning - come join us.

MARK YOUR CALENDARS:

(check our website for full calendar)

- Dec. 20 (SUN) - Candy Cane Sunday and special 9:30am PEAK K-4th Grade SUNDAY SCHOOL to celebrate Christmas
- Dec. 23 (WED) - 6:00-6:30pm Advent Devotional - Mid-week family time to celebrate the meaning of the season.
- Dec. 24 (THU) - CHILDREN'S CHRISTMAS EVE SERVICES 1:00 & 3:00pm (featuring our Puppet Ministry!)
- Dec. 27 (SUN) - No Sunday School - Enjoy Family Worship
- Jan. 3 (SUN) - Epiphany - KING'S SUNDAY
- Jan. 3 (SUN) - 9:30am SUNDAY SCHOOL: Joy Trek (PreK: 2-4 yrs.) begins 3-week lesson: "Jesus is Born"
- Jan. 3 (SUN) - 9:30am PEAK K-4th Grade SUNDAY SCHOOL begins 3-week lesson "Occupations of the Bible"
- Jan. 8 (FRI) - PLAYGROUP 9:00am - All are welcome!
- Jan. 8 (FRI) - Parent's Night Our 5:30pm - Contact sam@stlukeshr.com for information on this group.
- Jan. 10 (SUN) - 5:30-8:00pm - SLY, Jr. JUMP STREET RSVP with sharon@stlukeshr.com (Bring \$15 - includes dinner)
- Jan. 12 (TUE) - Children's Ministry Team 6:30pm - All are welcome to help plan our ministry.
- Jan. 23 (SAT) - Parent's Time Away 9:00am-noon Contact sam@stlukeshr.com to rsvp and for more info

C A M P F I R E C X V U
C Z Z Q H C A M P I N G
W A T E R F A L L M Y C
Y C F E C N H D G O D W
F E L L O W S H I P O X
J U F V M M T I E D Y E
B H U M M I N G B I R D
N N N S U M M E R F G Q
K M C B N M S M O R E S
A H I K I N G D T E N T
H T V O T P F C P D N R
E W P L Y C A N O E N M

CAMPFIRE	FUN	SUMMER
CAMPING	GOD	TENT
CANOE	HIKING	TIEDYE
COMMUNITY	HUMMINGBIRD	WATERFALL
FELLOWSHIP	SMORES	

Mark Your Calendars for 2016 Family Camp Fun!

St. Luke's annual Family Camp will be held from July 22 - 29, 2016 at Snow Mountain Ranch, just outside of Granby, Colorado. Come for a few days, or stay with us for an entire week full of fellowship, food, and lots of fun! Watch this space for sign up information in the next Chronicle issue. We hope your family will become a part of the St. Luke's Family Camp Family.

SLY, Jr. Awesome
Lock IN Fri. Jan. 29 overnight!

AWESOME! Our 5th & 6th grade service and fun group "SLY, Jr." is getting ready for our annual Lock In! Jan. 29 5:30pm until Jan. 30 8:00am at St. Luke's. We will discover through fun, service and worship what is awesome about ourselves and others, our world, our faith and how our awesome God fits into all of that. All 5th & 6th graders welcome - bring a friend. \$25 per child, rsvp to sharon@stlukeshr.com. Let's be awesome together!



Kay Swanson
Director of
Little School



Little School News:

Blessings for the Season from Little School

Everyone is counting the days until Baby Jesus' birthday and we will be finding many ways to celebrate our Fruit of the Spirit—JOY—for the season. We will be learning about



St. Nicholas with the tradition of putting one shoe around the Christmas tree and finding special surprises and gifts. We will talk about giving is better than getting and how to share joy with others. We are so thankful and amazed at the HUGE amount of food our families already donated for the Thanksgiving boxes. We collected MOUNDS of food (478 items!) and it enabled more families to receive Thanksgiving dinners! WAY TO GO Little School families!

December will be packed with lots of fun learning around our Pajama days, Pancake breakfast and special guests. Our 21st annual Christmas program will be held in the sanctuary on Wednesday Dec. 16 and Thursday Dec. 17 (doors open at 9:00am for seating). Ms. Laurie, Ms. Susan and Ms. Shari will no doubt put on another great program with music and merriment! Handbells will ring and instruments will clatter. It always so delightful and we hope to see you all there!

JANUARY MEANS REGISTRATION AT LITTLE SCHOOL FOR FALL 2016!

Registration forms will be available online starting in December. Current families, alumni and church members have priority, so don't delay! Visit our website littlestoolschool@stlukes.org for more information. Tours of Little School are available on Wed. and Thursday mornings at 11:00am starting in January. No appointment is necessary and children are welcome to tour with you. If you have questions you are welcome to email the school Kay@stlukeshr.com and we will be able to answer it quickly, especially over the Christmas break Dec. 18 through Jan. 3, 2016.

We pray that each and everyone of you will find time to make memories, do something nice for someone else and spread JOY this time of year. All of Little School wishes you a VERY Merry Christmas and a Happy New Year!

Blessings from Ms. Kay and Staff

"Children go where there is excitement and stay where there is love."

St. Luke's Little School - Best Preschool in Douglas County 2013, 2014, 2015

United Methodist Women

A Beautiful and Delicious Beginning to the Advent Season was celebrated by 99 women at the Candlelight Dinner, "25 Days of Giving".

Luanne Hill, Development Associate from Women's Bean Project brought a wide variety of products of gourmet bean soups, chilis, cookie and brownie mixes, bread mixes, salsa and spice rubs for us to purchase. These products measured and prepared by the women enrolled in the WBP program provide hope and a chance for a woman to earn her future through the skills she gains at Women's Bean Project. The mission of Women's Bean Project is to change women's lives by providing stepping stones to self-sufficiency.

The UMW leadership team joined the Women's Bean Project, assisting them at their Holiday Open House, on Saturday, Dec. 5. We worked as Kitchen Support making cookies and tea; helping families with their photos with Santa; Floor Associates overlooking supplies and filling boxes, or Runners restocking the store and assisting customers. It was a busy, fun, and enjoyable day.

The United Methodist Women's 43rd Annual Meeting and Celebration of the Rocky Mountain Conference was held October 23-24 in Alamosa, Colorado. The theme was "Interrupting Indifference" with focus groups highlighting topics on "Mass Incarceration"; "Economic Inequality", "Environmental Justice", and "Maternal & Child Health". The Honorable Amanda Pearson, JD, Saguache County Judge, was the speaker Friday evening, sharing how "her walk with Christ has proven to be the most effective path in achieving just results and how each of us can do the same in our own lives and communities".

SAVE THE DATES: 2016 UMW CALENDAR OF EVENTS

January 23 - Mission, Mentoring & Celebrations, Tri Lakes
March 12 - Spiritual Day Apart, Castle Rock
April 1-3 - Spiritual Life Retreat, Estes Park
April 24 - Spring Tea
August 28 - Fall Pie and Prayer
December 6 - Candlelight Dinner

Interest Groups of United Methodist Women at St. Luke's UMC:

Women are welcome to attend an Interest Group anytime during the year!

Book Group: Fiction, Non-fiction, Informative, Fun. Fourth Monday, Room 206, 7:00pm (6:15pm Potluck) Contact: Renae Parra (renaeparra@aol.com)

- **December:** NO MEETING. Enjoy your holiday season.
- **January 25:** "The Three Year Swim Club" by Julie Checkoway

Common Thread: Friendship, Fellowship, Caring, Sharing, Fun. First Thursday of each month, 10:00am. Meets at the church. Contact: Caroline Butler (carolinebutler@q.com) or Betty Smith 303-797-3225.

Itch to Stitch: Mission: Crochet, Knit, Sew, Fun. Meets 2nd Saturday in church basement. All skill levels welcome! Contact: Fran West (mfranwest@gmail.com) or 303-746-1117. **Check out our exciting endeavor: Our own Facebook page !!! - "St. Luke's UMC Itch to Stitch Guild".**

- **December:** No meeting. Enjoy the Advent Season with your family and friends.
- **January 9, 2016:** "Hook em" Saturday - connecting our care squares into lap- robes and shawls. (Tentative presenter - Knitted Peace instructor joining us)

As you can see, our interest groups - **Support** you thru friendship and fellowship - **Keep** you in Prayer - **Give** you a new insight into books - **Enhance** your handiwork skills - **Satisfy** mission needs - And... they supply you with **Renewal**.

For further information about UMW, look for UMW on the St. Lukes' website www.stlukeshr.com or email us umwinfo@stlukeshr.com.



"The organized unit of United Methodist Women shall be a community of women whose purpose is to know God and to experience freedom as whole persons through Jesus Christ; to develop a creative supportive fellowship; and to expand concepts of mission through participation in the global ministries of the church."

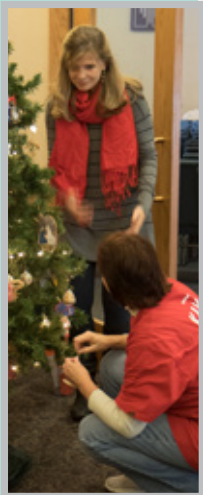


Trustees Corner

Many thanks to many of our members of the Trustees, Altar Team, Nursery, Scout Troop teams, Children's Ministry, Staff, and Caroline, our Hanging of the Greens had the best turn out and fastest turn up of our Christmas decorations!

We are genuinely grateful for their help! We were completed by about 11:00am! A Fabulous Christmas Miracle! See you all on January 3rd for the sequel put away session!

We also appreciate the hard work of Caroline Butler, Sandi Miyaki, Debbie Boucher, Lisa Lehnus, Barry Curtis, James and Brian Bacon in securing our new stoves, a donated commercial mixer, new stainless tabletop, and completing a deep clean of our commercial kitchen! A cider toast celebration marked the event as Caroline christened our new stoves baking pretzels and melting chocolate -- Dave Rhodes and others joined in the festivities (he'd been our 1st chef on the old unit!) You may not realize it, but we host a bunch of gatherings serving everything from receptions, candle light dinners, fundraisers, and lots of prep sessions all year round! Please help us by keeping it clean and picked up when you and your team use it!



More from Les by Rev. Les Ludlam: The Large Christmas Tree



"We need a nice Christmas tree for the sanctuary," commented our pastor, Don, "But our budget is pretty tight and trees on the local lots are far too expensive for us." "I could cut one on our Oil Shale property," I thought, "Sam, our environmental science specialist knows where there are some large stands of evergreen trees and could help me find a nice tree for the church!"

A quick visit with Sam confirmed my plan. East Middle Fork had a dense stand of Douglas fir. "It would actually improve the tree growth there by thinning out the heavy growth," said Bill, "But don't kill the tree, cut the trunk just above a healthy branch and the tree will keep growing from that branch next spring."

A call was made to pastor Don; he thanked me for offering to supply a Christmas tree and added, "We'll need one that's fairly large, the sanctuary ceiling is about 15 feet high."

The following weekend, the tree-cutting outing began. Handsaws, ropes for tying down the tree, wet burlap to wrap the fresh trunk cuts, and picnic lunch supplies, were loaded into the pickup and we were off to East Middle Fork. We found the stand of trees, stopped the truck and waded through the snow to inspect the trees and select one for the church sanctuary. We found one that was well rounded and not too far from the pickup. Cuts were made and the tree felled, then we pulled through the snow to the pickup. "Let's get a smaller one for the house," said Betty, so a much shorter fir was cut for ourselves.

We soon discovered that the tree we had cut for the church had not seemed so large in the open. But as we prepared to put it into the pickup, we found it more than filled the bed! I decided to put the small tree into the pickup bed first, then place the larger tree on top of it, with the cut end forward and the top sticking out the back, before tying the trees down for the trip back to Grand Junction.

I was proud of my handiwork!

A careful and slow drive to the church (I didn't want to damage the cargo!) took about an hour.

After we arrived at the church, pastor Don greeted us warmly, but with a look of surprise that caught me off guard! "Great tree Les," he exclaimed, and then paused, not wanting to criticize my efforts, said "we'll have to figure out how to fit it into the sanctuary."

And figure they did! The lectern was moved to the sanctuary floor and the organ was moved next to the east entrance door. Then the Choir director got involved. "The congregation needs to see the entire choir, so we won't want anyone standing behind the tree," she said. I'll organize the choir seating into fewer columns, but make them six rows deep. That will be enough to make sure everyone is seen. Pastor Don called the heard of the trustees: "Yes, our ladders are tall enough for decoration of the top of the tree. I don't think though, that we have enough light strings for a tree that large!"

A heavy support frame was made from 2x4's and the base of the tree was placed in a 5-gallon water container anchored to a concrete block. When we were finished, the tree looked twice as large as it had seemed it East Middle Fork! "It is impressive, almost inspirational," said pastor Don as the tree was set into place and the decorating began. But I thought to myself, "But the cost is far more than it would have been had we purchased a 6-foot tree from a local lot!" I quietly arranged to pay for more light strings and ornaments.

The "wow factor" of the decorated tree in place next to the altar was high. The Christmas tree dominated the entire altar area for all of advent and inspired more than one exclamation of amazement when people entered the church for the first time. Pastor Don made the most of the presence of this elephant in our sanctuary by preaching about allowing our lives to be filled with the celebration of the birth of our Savior, just at the sanctuary has been filled by this Christmas tree.

Following Epiphany, I helped take down the church decorations and disassemble the tree. Another church member had brought a chain saw to cut up the tree into pieces small enough to be disposed of easily.

As we were finished up, Pastor Don took me by the arm and smiled, "Celebrating the Christmas holiday with a tree that large has been unique and has led us all to reflect upon on what it means to celebrate the birth of Christ, but I really think we should have a smaller tree next year!"

God bless us all. -Les



Our Mission: To promote healing and wholeness by creating opportunities for authentic connection, and

by providing experiences that inspire and transform.

Visit our website stlukesce.org to learn more!

Celebrating CSE 2015

This wonderful time of year, so full of warmth, candlelight, bright seasonal colors, and anticipation, prompts moments of reflection about where we have been and where we are going. We have much to celebrate in the Center for Spiritual Engagement. During 2015 we facilitated two retreats for women (Devil's Thumb and the Franciscan Retreat Center). We hosted two inspiring Speakers Series: Pennie Hunt provided practical strategies to "Love Your Life, No Matter What," and Rev. Dr. Leanne Hadley discussed how the integration of faith and psychology can work together to heal hurting children. She also described the evolution of her "Holy Listening Method" and the use of Holy Listening Stones. An engaging book discussion group centered on Brené Brown's work about living authentically, an inspiring summer journaling experience, a Communitas Retreat focused on developing "Your Story," a celebration of World Labyrinth Day, and deeply spiritual yoga classes have provided abundant opportunities for inspiration and transformation during 2015.

Our Outdoor Adventure team has continued to grow: we have led 26 different trips to unique and beautiful places in Colorado over the past three years. Eighty-nine different people have participated in our adventures, and many have become regulars. During 2015 twenty-nine new folks joined our adventures for the first time, as we hiked, birded, kayaked, tried stand-up paddle boarding, greeted the morning sun with yoga, and explored ancient archaeology sites, all as we connected with one another, with our beautiful Colorado geography, and with our deeper spiritual selves. Please visit the CSE Photo Gallery (stlukesce.org) to share in all of our outdoor experiences over the past three years.

The mission of the Center for Spiritual Engagement is To promote healing and wholeness by creating opportunities for authentic connection, and by providing experiences that inspire and transform. We are grateful for the continued support, confidence, and participation that we receive from the St. Luke's community.

Hikes! OUTDOOR ADVENTURE MINISTRY: Hiking the Seven Bridges near Colorado Springs. We were blessed yet again with a beautiful fall morning to hike along North Cheyenne Creek with its seven bridge crossings. Earlier snow left some icy spots to challenge us, as well as some beautiful "icicle falls" to inspire us. Each bridge provided an opportunity to pause, to offer thanksgiving and gratitude for the paths we have all traveled this past year, and to move across and beyond to new adventures!



Coming in 2016: As we look forward to 2016, the Center for Spiritual Engagement would like to develop at least one activity specifically for the men of St. Luke's community. Please let us know if you would be interested in participating in a Men's Book Discussion Group, or some other kind of activity uniquely planned for and by men. We are also planning opportunities for dance, including instruction by Steve Collins, to release those inner "Dancer Spirits." Gargi Agarwala will continue to offer deeply spiritual yoga experiences on Thursday mornings, and our Outdoor Adventure team is planning an exciting agenda for 2016. We also will offer an afternoon Communitas opportunity to explore and develop "Your Story" beginning in February.

Speakers! SPIRITUALITY AND WELLNESS

SPEAKER SERIES: *SAVE THE DATE:* Tuesday, March 1, 2016. Our Spirituality and Wellness Speaker series presents "*Catch Yourself Coming Alive*" with Schawn Kellogg, R.N., M.Div. Schawn is a faculty member for the Institute for Life and Care and an ordained Deacon in the United Methodist Church. She finds joy in joining others on their journey of self-discovery and transformative, sustaining spiritual growth. Schawn will raise some intriguing questions for us to consider. Do we take time to recognize what makes us come alive, what surprises us, what lights us up and do we share that in our relationships and in our communities? Join us for an evening of inspiration and discovery! For further information contact julie.polikoff@msn.com. Childcare

is available with a reservation, sam@stlukeshr.com.

Yoga!

CLASSES AND EXPERIENCES:

Morning Yoga with Gargi – A new series of Thursday morning classes will begin on Thursday, January 14

(9:00 – 10:15 am) in the St. Luke's Chapel under the beautiful guidance of Gargi Agarwala. These classes are offered on a drop-in basis; come for one class or as many as you can manage in your busy schedule. Bring a yoga mat; recommended donation is \$10/class. Through the fall months, Gargi provided an inspiring exploration of the seven chakras, as she helped us integrate mind, body and spirit. Two additional classes were added to December by popular demand.



Resources!

SPIRITUAL ENGAGEMENT FOR CHILDREN & TEENS - FIRST STEPS

We've added new information to our website about how Holy Listening Stones can enable children to express the things they believe about god, to explore and make spiritual sense of what is happening

in their lives, to use their own spiritual strength to work through problems, and learn to trust their inner selves, knowing that God is present with them. We hope you've visit the site to learn more.



Upcoming Events!

- ✦ **December 20: White Elephant Christmas Gift Exchange**
- ✦ **Sign up to receive our emails and Check www.stlukeshr.com and click on "Youth" or "SLY" for up-to-date info on programs, activities, opportunities and more!**



Sundays:

- **9:30-10:30am – SLY AM**
Exploring life issues and the bible
- **5:30-6:00pm – Community Dinner** - \$2 per person.
- **6:00-7:30pm – SLY PM**
All sorts of fellowship and fun activities are happening Sunday nights in the youth room!
Check out our website for details.

Wednesdays:

- **5:30-6:30pm: Homework Hour**
- **6:30-8:00pm - Wednesday SLY Activities**

Young Adults Help Bring In the Holidays



If you happened to catch the Parade of Lights in Denver this year, chances

are you saw some of our Young Adults, dressed in white and safari hats, directing the big white tiger balloon! The group of about ten volunteered to show up early



and help inflate all the balloons in the parade. Then they were put in charge of the biggest balloon.. the white tiger

from American Furniture Warehouse. Jake Jabs even stopped by to say hey! What a fun way to help spread joy and kick off the holiday season!

ON THE SLY: Having a Ball!

The youth have sure been having a good time this holiday season! At the beginning of November a bunch of our senior high students met up with other senior high students across the district for a weekend retreat at Buckhorn Camp. It was a full weekend of fun and fellowship as they joined in worship and building relationships with God and each other.

Laughs and giggles were abounding in the youth room one Sunday night as we tried out a new game.. Live Hungry, Hungry Hippos! As you may recall from the 80's and 90's, Hungry, Hungry Hippos is a game where there are balls thrown in the middle and, using a lever, try to get your hippo to eat the most balls. Well in the live version, one of the people on your team lie down on a scooter with a basket in their hands and a rope tied to their feet. We would release a bunch of balls in the center of the room and their teammates would push them towards the center. Once they have some balls in their basket their team would pull them back as quickly as possible to gather the balls and then push them out again to collect more. It was such a riot! You can bet that will be on the schedule again soon!

Then it was time to get crafty in the youth room! We held a Wednesday night painting class where the youth got to paint their very own Christmas tree scene. We ended up with trees of all different colors, shapes, and sizes, and even learned a couple new skills! It was such a blast!

Don't forget, coming up in January we have our Confirmation classes starting! Confirmation is for any youth 8th grade or older to come and learn more about the church, United Methodism, and their own personal faith journeys! It meets most Sundays at 1:00 from January 3rd to April 3rd. If you're interested in signing up but haven't yet, contact Dave ASAP!!! *Yours in Christ, Dave, Amy & Jeremy*

FROM DenUM: We are so grateful for your generosity and support this Thanksgiving! Thank you for donating your time, energy and SO MUCH FOOD to DenUM at Food for All this year. Together we collected, sorted, and packaged 678 meals that were distributed to low-income and hungry families in our community. We're looking forward to seeing you again next year. You all rock! *(St. Luke's was responsible for 100 of those boxes and were 30 - SLY & SLY, Jr. - of the 72 people helping that day. Thank you St. Luke's!)*



Dave Laurvick
Director of Youth Ministry



Amy McMullen
Assistant Dir. of Youth Ministry



Jeremy Brown
Assistant Dir. of Youth Ministry





Sheri Henry
Director of Finance

Thank You for Your Financial Support

December 31st is rapidly approaching and it's time to begin planning how you want to close out the year to get your best tax advantages. Here are some ideas to consider:

Selling Appreciated Stock: Contact me if you have some stock that you would like to donate to St. Luke's. To receive credit in 2015, the transaction must be completed by December 31st. (You should consult with your tax consultant to confirm the tax treatment for your transaction.)

Prepaying Future Pledges: If you need additional tax deductions for 2015, consider prepaying your 2016 pledge. The amounts we receive for future year(s) will be applied to the year you designate. Please mark your checks accordingly.

If you haven't finished your 2015 giving, we encourage you to do so before December 31st.

All contributions received during 2015 are posted as 2015 contributions unless you instruct us to apply them to a future year. Contributions received by mail must be postmarked on or before December 31st in order to be credited to your 2015 giving statement; otherwise, they will be credited to your 2016 statement. You can make an online credit card transaction as late as 2:00pm Mountain Time on December 31st and it will still be applied to your 2015 giving record.

We offer a variety of ways for you to make your contributions:

- Cash, check, and stock transfers
- Scheduled automatic withdrawals from your checking or credit card accounts. You may enroll in either of these methods by going online at www.stlukeshr.com or in person here at the Church.
- Go online at www.stlukeshr.com and do a one-time transaction from your checking or credit card account.

Thank you to everyone who has returned your 2016 Commitment Card. If you haven't returned yours yet, we would greatly appreciate receiving it before the end of the year.

Thank you for your generosity.



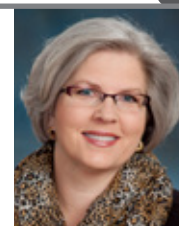
James Ramsey
Director of Music
& Arts Ministries



Kenrick Mervine
Associate Dir. of
Music Ministry/
Organist



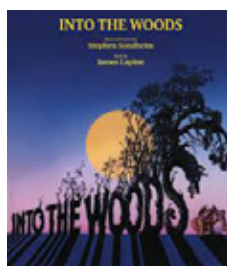
Kay Coryell
Dir. of Handbells
& Children's Music
Ministry



Kristi Pawley
Music & Arts
Admin. Assistant/
Accounting Clerk

Broadway on Broadway 2015!

Broadway on Broadway 2015 was a fantastic production and a great way to celebrate the Wesley Players 15th Anniversary. A 15-year reunion/cast party followed the opening night performance and past Wesley Players performers joined the cast onstage at each performance. *Broadway on Broadway* was the perfect way to commemorate 15 years of community and more than a quarter million dollars raised for missions. The show netted more than \$6,200 for Pura Vida and Urban Peak. Thank you for your support!



Into the Woods

The spring production of *Into the Woods* will be March 4-6, 2016 – mark your calendars! *Into the Woods* by Stephen Sondheim and James Lapine is a musical that blends together plots from a number of the Brothers Grimm fairy tales. Included are characters from "Jack and the Beanstalk", "Cinderella", "Little Red Riding Hood" and "Rapunzel". The show explores the consequences of wishing by following the story of a baker and his wife and their desire for a family. Look for more information in the weeks to come. If you have questions, please contact Melanie Kirkpatrick at melanie.kirkpatrick@gmail.com.

Christmas Eve Services: 'Tis the season! Start planning ahead for Christmas Eve. We offer a variety of services from lively to mellow. Go Light Your World through one of our services of carols and candles.

- **1:00 and 3:00pm – Children's Christmas service** featuring Puppet Ministry, Cherub's Choir, Primary and Junior Prayz Choirs, Soul Purpose Youth Choir, and Joyful Noise Youth Handbells. Suitable for all and delightful for young children.
- **5:00 and 7:00pm – Traditional service** with carols featuring the Chancel Choir, Organ, Brass Ensemble and Tinnabulators Handbell Ensemble. A peaceful and inspiring time to welcome the holy Christ.
- **10:00pm – Communion service** featuring Soloists and Organ; a more reflective, contemplative service.



St. Luke's United Methodist Church
8817 S. Broadway • Highlands Ranch, CO 80129
303-791-0659 • www.stlukeshr.com

*St. Luke's United Methodist Church welcomes you to our Christian family,
where we share life. Wherever you are in your faith journey,
you are accepted and encouraged to grow spiritually.*

*Join us in growing together toward full humanity through living
the teachings of Jesus: Love, Acceptance, Justice and Hope.*

Christmas in the Park

LET'S BRING THE LIGHT TO THOSE LESS FORTUNATE THIS CHRISTMAS

St. Luke's is collecting **Socks, Hats, Gloves & Hand Warmers** to be handed out in Lincoln Park (downtown Denver) on Christmas Day. You may donate items now through Christmas Eve (leave in the Narthex) and/or join in Dec. 25 at noon at the park to hand out items. Questions? Contact sam@stlukeshr.com

CONGREGATIONAL CARE



Brenda Schafer
Office Administrator

*Don't you be afraid,
for I am with you.
Don't be dismayed,
for I am your God.*

*I will strengthen
you....* —Isaiah 41:10

PRAYER CONCERNS

Contact Rev. Sallie Suby-Long or Brenda Schafer if you have any additions/removals. 303-791-0659 x32, leave a note on the front desk, or email sallie@stlukeshr.com or brenda@stlukeshr.com

LATEST ENTRIES TO PRAYER LIST:

Debi Sheppard
Jane Riegler
Natalie Murrow
Grant Larson
Havana Gilbert – Gary & Laurie
Gilbert's granddaughter
Jan Rufien
Dan Keyack –
Betsy Keyack's father
Nicolette Vega
Gracie Billups
Carol Carnahan
Peter Waldheim

Joe Stanley – Joy Damsgard's
nephew
Joseph Lorenzo
Roberta Towell –
Jon Streaty's sister
Julie Gustafson
Cynthia Marquette –
David Lamoreaux's friend
Bob Miller –
Karen Herr's brother
Fran West
Carol McClure –
Janet Johnston's sister

Dick Dunham
Larry Gustafson
Ken Reck
Peter Young
Marcia Meier – Pastor Tonya
Whaley's friend
Autumn Anderson – Kathy
Swier's cousin's daughter
Jansen Hosey –
Kathy Swier's niece's son
Dan Swier
Jerry Hecht
Jeanne Graves –
Linda Malone's friend

Beth Turner
Leslie Wildrick –
Ann Packer's friend
Angie Cortse –
Meghan Dietz's friend
Chelsea Langhamer Meghan
Dietz's friend
Everly Joy Crosby – Betty
Ludlam's colleague's daughter
Noemi Claderon
Stan & Dill Both
Rowann – Betty Ludlam's friend
Jens Bender – Stephanie Roth's
brother-in-law
Jackson Bender – Stephanie
Roth's nephew

CONGRATULATIONS TO:

Kris Reif on the birth of her granddaughter,
Elsie Marie Marchelya
Eric & Schawn Kellogg on the birth of their
granddaughter, Cora Charlotte Kellogg
Mike & Linda Hollyman on the birth of
their daughter, Sarah Mary Hollyman,
and to her big sister, Corinne, and big
brothers, Joel and Adam too

SYMPATHIES TO:

The ThunderRidge friends and family of Samuel Rowley
Steve & Ann Bennett on the passing of Ann's mother,
Elaine Martens
Cynthia & Nikki Roberts on the passing of husband/father,
Orie Roberts
Ken Fligg on the passing of his wife, Linda Fligg
Angela Alderson on the passing of her colleague, Dale Lumpka
Bev Speers on the passing of her husband, Wallace Speers
Jon & Lisè Takayama on the passing of Lisè's mother, Ruby Gray

Bruce & Kelly Stahlman on the passing of their son,
Eric Stahlman
Bob Davis & Rev. Janet Forbes on the passing of
Bob's mother, Pat Dublin
Vern & Eileen Coy on the passing of Eileen's sister,
Emily Yanase-Mori
George & Elaine Carlstrom on the passing of
George's brother, Edward Carlstrom
Jerry & Marilyn Hecht on the passing of Marilyn's
sister, Susan Decker