



Highlands Ranch, Colorado

The Chronicle

ST. LUKE'S UNITED METHODIST CHURCH

MARCH 2016

Inside This Issue:

From Rev. Janet.....	2
From Rev. Ryan.....	3
From Rev. Sallie.....	3
Grief Support.....	5
UMW Update.....	5
Children's Ministry.....	6
Seasoned Voyagers.....	8
CSE Update.....	9
SLY.....	10
Music & Arts.....	11

and much more!



Easter FUN Day

Sun. March 20
12:30-2:30pm

Grab your family and come join us for games, Easter egg hunts, balloon animals, photos with the Easter bunny, cookie walk, cotton candy, bouncy castle, crafts, live bunnies and MORE! If you can help, we need you. Drop off cookies and candy or sign up online on our website. This is a great and FUN way to serve our church and our kids! Thanks so much!

Into the Woods – Wow!

Into the Woods presented by St. Luke's Wesley Players on March 4-6, celebrates 16 years of creativity, community, and making a difference. The passion and energy that drive these performances is the desire to use our gifts and talents to make an impact on the wider world. Over the years the Wesley Players have raised over \$265,000 for local, regional, and international partners and projects. Hurray Wesley Players and thanks for an amazing journey through the woods!



Palm/Passion Sunday Mar. 20:

The Gift of Misfits – Janet Forbes

Maundy Thursday & Good Friday Mar. 24-25:

The Gift of Disappearing

EASTER Mar. 27: *The Gift of Easter*

– Janet Forbes and Ryan Canaday

BUNKBEDS: THE PROBLEM OF



ST. LUKE'S
EASTER SEASON 2016
WORSHIP SERIES

Week 1 - April 3: – Rev. Ryan Canaday
TRANSITIONS: *Staying Present in the Struggle*

Week 2 - April 10: – Rev. Ryan Canaday
TRANSITIONS: *The Necessity of Compromise*

Week 3 - April 17: – Rev. Janet Forbes
TRANSITIONS: *Finding a Rhythm*

Week 4 - April 24: – Rev. Janet Forbes
TRANSITIONS: *The New Beginning*

ST. LUKE'S FAMILY CAMP

summer fun for the whole family? Join us for Family Camp this July 22-29, 2016 at Snow Mountain Ranch (SMR), just outside Granby, Colorado. Our theme this summer is **"Family Olympics,"** where we will have a great time with activities such as the low ropes course, miniature golf, waterfall hike, and the summer tubing hill. Along with our activities at SMR, Family Campers have the opportunity to enjoy a day playing at the Winter Park Adventure Park and another day relaxing on the shores of Lake Granby. Fellowship is found throughout each day, including our community breakfasts and dinners. In the evening don't miss sitting by the campfire, roasting marshmallows, and even singing a song or two. Please join us for a few days, or stay the whole week. We hope that in 2016 your family will join us and become a part of the St. Luke's Family Camp Family. Sign up online now: stlukeshr.com/familycamp

Join Us for Family Camp 2016

The weather is warming up, and summer is just around the corner! Are you looking for some

Sunday Worship Services:

8:00am, 9:30am, 11:00am,
Contemplative Service
(Check website for dates & times)

Sunday School:

Adult, Youth & Children:
9:30am & 11:00am

Nursery available for:

8:00, 9:30 & 11:00am services

Church Office.....303-791-0659

Fax.....303-470-5615

Email.....office@stlukeshr.com

Website.....www.stlukeshr.com

Preschool Office.....303-791-1982

**Staff:**

Rev. Dr. Janet Forbes.....x13
Clergy Team Emergency: 303-241-9312

Rev. Dr. Sallie Suby-Long.....x32
Clergy Team Emergency: 303-475-0141

Rev. Ryan Canaday.....x12
Clergy Team Emergency: 303-944-5061

Rev. Pat Shaffer.....720-988-5430
Visitation Pastor

Rev. Tonya Whaley.....720-300-9393
Student Pastor

Sharon Oliver.....x27
Director of Children's Ministry

Samantha Leahy.....x40
Director of Early Childhood Ministry

Stephanie Kirk.....x11
Children's Ministry Coordinator

Dave Laurvick.....x14
Director of Youth Ministry

Amy McMullen.....x19
Assistant Director of Youth Ministry

Jeremy Brown.....x19
Associate Director of Youth Ministry

Kay Swanson.....303-791-1982
Director of Little School

Dr. James Ramsey.....x23
Director of Music & Arts Ministries

Kenrick Mervine.....x33
Associate Director of Music Ministry & Organist

Kay Coryell.....x36
Director of Handbells & Children's Music Ministry

Brenda Schafer.....x10
Office Administrator

Sheri Henry.....x24
Director of Finance

Kristi Pawley.....x16
Accounting Clerk/Music & Arts Admin. Assistant

Lynda Fickling.....x20
Director of Servant Ministry/Spiritual Director

Barry Curtis.....x39
Facilities Manager

All submissions for the combined
April/May 2016 issue
of *The Chronicle* are due April 1
Editor: Sharon Oliver
chronicle@stlukeshr.com

The *Chronicle* is published 10 times per year
and is emailed to those on our email blast list,
and it can be found on the church website.
Printed copies are available at church entrances.
To receive *The Chronicle* via US mail,
please call or email the Church Office.



Rev. Janet Forbes
Lead Minister of
Community Life

The Invitation to Holy Week

*Keep close to
nature's heart
and break clear
away, once in
a while, and
climb a mountain or spend
a week in the woods. Wash
your spirit clean.* —John Muir



Lenten greetings! This season, we are invited see life through new eyes, recognizing that experiences of struggle are as critical for finding our way through life as they are unavoidable. We have explored how experiences of life through the “dark wood” are actually clues to our calling, our life path, and our spiritual journey. What a paradox! What insights! Not only the Gift of the Dark Wood! This is the Gift of Easter!

Our Holy Week observances anticipate that great day of resurrection!

On Sunday, March 20, as we celebrate **PALM-PASSION** Sunday, we begin our worship with glad shouts of hosanna as we welcome Jesus. But before the day is over, Jesus will engage his passion and confront the forces that lead to his crucifixion.

On Maundy Thursday, March 24, at 7:00pm, we will observe Jesus' last supper with his disciples in a contemplative **SERVICE OF COMMUNION AND ANOINTING**.

March 25 is “God's Friday” on which Christians remember the death of Jesus on a cross outside Jerusalem. In many churches there is a service at or before three o'clock, when it is thought he died. In some countries, believing Christians spend the rest of the day quietly. But, Seville, a city in the south of Spain, is crowded on Good Friday by thousands of people, all hoping to see the spectacular processions which wind through the streets when darkness falls. By the light of hundreds of flickering candles, richly dressed statues which portray scenes from the last days of Jesus' life are carried aloft.

In England, most people, whether Christian or not, like to eat hot cross buns: spicy buns decorated with an egg paste cross, which is a reminder of the cross of Jesus. But the custom of making cakes with crosses is even older. Two were found, still with their crosses on them, in the remains of the Roman town of Herculaneum, which was buried under mud when the volcano Vesuvius erupted in A.D. 79. The custom – perhaps even the recipe – was brought by the Romans to Britain, and bakers are still producing them by the million every Holy Week.

On GOOD FRIDAY, March 25, at 7:00pm, we will observe a service of darkness, in which we remember the events of Jesus' crucifixion. Our St. Luke's Chancel Choir will join in a musical and dramatic presentations of the events of Jesus' last day. We will leave in silence after planting the three crosses on the lawn. A very dramatic, moving service!

Then, on Sunday, March 27, the EASTER SERVICES OF RESURRECTION in this sanctuary will be at 8:00, 9:00, 10:00, and 11:00am with brass, choirs, and hand bells.

Don't miss the Holy Week journey! The light on Easter morning is so much brighter if you take the time to experience the darkness.

Lenten Blessings, *Rev. Janet*

The Easter Offering Makes a Difference for Families at St. Luke's

During the seasons of Lent and Easter, we have the opportunity to work together, giving members of our community the opportunity for new beginnings. Together, our small monetary gifts make a tremendous difference! This special offering meets the emergency needs of persons in our congregation. Because of your generosity, the Samaritan Fund assists our families with one-time, crisis funds for such items as medical bills, gasoline, groceries, counseling, educational needs, bereavement costs, rent or automobile assistance. What a tremendous gift of grace this fund is for our families who find themselves on the edge! Thank you for giving our community the resources to care in such tangible ways. Give a cash gift with the Easter Offering envelopes. Or mark your check to St. Luke's UMC in the memo for the Easter Offering.



Rev. Ryan Canaday
Lead Minister of
Worship &
Missional Life

Bunkbeds: The Problem of Transitions

We will be launching our new worship series, BUNKBEDS: THE PROBLEM OF TRANSITIONS, beginning April 3, the Sunday after Easter. I hope you are able to join us!



single bedroom where they will now sleep in...bunkbeds. The giggling, the arguing, the climbing, the loss of sleep—the exhaustion. “What do we do? This is hard. This isn’t working. Should we go back to the old way?” Transitions in life—they’re hard. They can be exhausting and confusing. But we all at some point encounter times of transition. In the Scriptures we find people and communities who were constantly in transition—new identities, new lands, new perspectives, new challenges, new life. Today we still ask some of the same questions they were asking: What do we do with it all? How do we keep moving forward? And where is God in all of this?

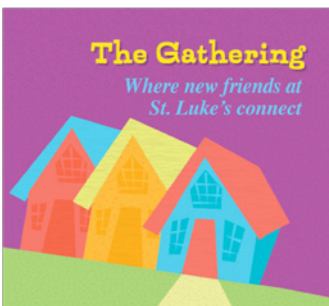
Week 1 - April 3
TRANSITIONS: Staying Present in the Struggle

Week 2 - April 10
TRANSITIONS: The Necessity of Compromise

Week 3 - April 17
TRANSITIONS: Finding a Rhythm

Week 4 - April 24
TRANSITIONS: The New Beginning

Grace & Peace, *Rev. Ryan*



The Gathering at Rev. Sallie's

April 10 12:30-2:30pm

Whether you are new to St. Luke's or have been connected for a while now, we invite you to be our guest(s) on Sunday, April 10

from 12:30-2:30pm at the home of Rev. Sallie and Tom. We will enjoy conversation and light snacks with new friends and leadership of St. Luke's. RSVP to Lynda Fickling Lynda@stlukeshr.com 303-791-0659 x20! *Childcare will be provided with reservation to sam@stlukeshr.com 48 hrs in advance, please! All are Welcome!

“They spent their time learning from the apostles, and they were like family to each other. They also broke bread and prayed together.”—Acts 2:42-47 (CEV)



Rev. Dr. Sallie Suby-Long
Lead Minister of
Spiritual Life

Health, Wellness and Care

As a faith community, we enthusiastically support your commitment to caring for all aspects of your wellness. That's why we strongly encourage you to participate in the following opportunities. We



make every effort to address care and wellness of mind, body and spirit. To connect in ways that may be helpful to you, you can contact anyone in our congregational care network. This includes Rev. Pat who is our Visitation Minister (Pat@stlukeshr.com), our Stephen Leaders who can connect you with one-on-one care, (Laura McCarthy, Bob West, Nancy Abbott, & Melinda Davidson) and our whole pastoral team Rev. Sallie (sallie@stlukeshr.com), Rev. Ryan (ryan@stlukeshr.com), and Rev. Janet (janet@stlukeshr.com). You can always contact me via text, email or phone and I am happy to connect you with opportunities that contribute to your overall health and spiritual wellbeing. Rev. Dr. Sallie Suby-long: 303-91-0659 x32 or 303-475-0141.

- **Stephen Ministry** – provides confidential, one-to-one care to individuals in our congregation and community. Stephen Ministers are volunteers who have specialized training in listening and providing emotional and spiritual care. Contact a pastor or Stephen Leader if you or someone you love would benefit from this ministry.
- **Counseling** – Rev. Sallie, Rev. Janet, Rev. Ryan, and Rev. Pat offer short-term, solution-based counseling, pastoral care, and referrals for individuals, couples, and families seeking support. Confidentiality is always respected.
- **Center for Spiritual Engagement** – Ongoing opportunities for experiences promoting well-being, connection, healing and inspiration. Join us for workshops, retreats, seminars and classes featuring excellent facilitators. We offer outdoor adventures, book discussions, meditation and yoga classes, and creative experiences that engage participants in learning new practices that contribute to health and wholeness. We also have a brand new ministry of Sacred Travel! Check the Website at stlukeshr.org and the CSE article in this issue.
- **Spiritual Direction/Mentoring/Coaching** – Spiritual direction supports people in managing transitions, enhancing self-awareness, gaining new insights, making desired changes, and proactively addressing life challenges.
- **Prayer Team** – gathers regularly to pray for concerns of individuals, the congregation, and the community. Requests for prayers may be sent through the website, written on a prayer request card or shared with a member of the pastoral and staff team.
- **Support Groups and Classes** – St. Luke's offers support groups and classes focused on a variety of topics including 12-step programs, divorce recovery classes, and grief support groups. Information about current groups is available on St. Luke's website and in the Care Ministries brochures in the church entry.
- **Faithful Friends** – offer care and friendship to individuals in care centers, those who may be dealing with long term health challenges, and individuals who may have difficulty getting to St. Luke's on a regular basis.

If St. Luke's does not offer the type of health and wellness opportunity you are seeking, the pastoral team makes every effort to connect you to additional resources and support within our community.

Warmly, *Rev. Sallie*



Lynda Fickling
Director of
Servant Ministry/
Spiritual Director

Get CONNECTED

Are you new or recently attending St. Luke's? Please stop by the Get Connected Center for information regarding our Community! We welcome you and want to do all we can to help you feel at home. Questions? Contact

Lynda Fickling 303-791-0659 x20 lynda@stlukeshr.com
Want to make St. Luke's your church home?

We can help you get connected.



Pause At Panera's

9579 S. University Blvd. • Highlands Ranch

Join our Communitas Group Thursdays March 10-April 28, 2:00-4:00pm. We will be looking at "The Power of Pause" by Terry Hershey. Drop in anytime or sign up online! Contact-Lynda Fickling lynda@stlukeshr.com

St. Luke's: Your Spiritual Community

Our hearts lead the way when we join in a community.

We embrace new friendships, discover shared passions and connections, ask questions, and begin to understand who Jesus is for us, in our lives. We invite you to experience community with St. Luke's. To connect in a deeper way, please contact one of our Pastoral staff or Lynda Fickling, Director of Servant Ministry lynda@stlukeshr.com 303-791-0659 x20

We look forward to sharing our journeys together.



Special Recognition:

"We the Equipping Ministry Team of St. Luke's United Methodist church, are honored to welcome Dean Conklin into Emeritus status for this team. His contributions have been immeasurable, his spirit contagious and his devotion to relationship building key to our success."

Thank you, Dean, for accepting this status!

Sandy Larson & Lynda Fickling Co-Leaders of Equipping Ministry Team

Easter Sunday Hospitality



We'd love to have your smile & helpful hands at either Greeting, Ushering, Coffee Team or Parking Lot duty.

If you can help anytime please contact Lynda 303-791-0659 x20 lynda@stlukeshr.com or sign up at the Get Connected Center. Thank you!

Altar Team

Easter Lily Sales ~ Order your Easter Lily from the Altar Team. ~ In Celebration Of... ~ In Honor Of... ~In Memory Of... for a total cost of \$20. Plants may be picked up after the 11:00am Easter Sunday Service. Sign up in the Narthex at our Flower Table March 13 and 20.



Flowers are Celebrations of Life. The Altar Team invites you to help us Decorate our Altar each Sunday by Celebrating Your Life, Your Family and Your Friends.

The two bouquets designed by our Floral Designers cost only \$30. You may take the Bouquets home after the 11:00am service. Vases may be returned the following week and placed at the sink area in the Narthex. Call the office to reserve your "Special Flower Sunday". Send your \$30 check payable to St. Luke's UMC with Sunday Flowers in the memo line.

Grief Support Group



If everyone around you has moved on and you are still grieving the loss of a loved one and feeling

alone, please consider joining me, Rev. Pat Shaffer, and others **April 3, 10, 17 & 24 from 12:30 until 2:00pm** in the St. Luke's Chapel. The heart of this Grief Support Group is sharing your grief story after the death of a spouse, child, family member, or friend with others who are on the same journey and understand what you are feeling and experiencing. Group values are listening, caring, and keeping confidence. Helpful resources are shared as well. Please email pat@stlukeshr.com or call 720-988-5430 to register or for more information.



You are invited to the United Methodist Women's

Spring Tea Celebration "Tea and Textiles"

Sunday, April 24, 2:00-4:00pm

Enjoy the many examples of handiwork completed by several generations of women. Today many of these skills are continued by us decorating our homes and received as gifts handed down from grandmother to mother to child (family to family) - a legacy of our heritage. Join us in finding how these simple skills are used in the 20th century. Take pleasure in a delicious Afternoon Tea of Savory and Sweets. Help our Mission benefitting St. Luke's Team for Congregation Care. Join us in taking care of our own church family. We are looking forward to a delicious, fun, enjoyable afternoon. Hope you will join us.

The Vision of UMW ~

Turning Faith, Hope and Love Into Action on Behalf of Women, Children, and Youth at Home and Around the World.

Our Programs ~ We have monthly Mission Events and three General Meetings a year with all missions supporting Women, Children and Youth.

Spring Celebration ~ Spring Tea of Savories and Sweets

Fall Celebration ~ Pie, Prayer and Purpose

Winter Celebration ~ Candlelight Dinner

SAVE THE DATES:

2016 UMW CALENDAR OF EVENTS

• March 12 – Spiritual Day Apart

Let the United Methodist Women be a part of your Spiritual Journey. **Time:** 8:30am-2:30pm. **Place:** First United Methodist Church of Castle Rock, 1200 South Street, Castle Rock, CO 80104 **We Invite You to Join us** at the Mile High Pikes Peak District UMW "Spiritual Day Apart". **Speaker:** Jolain Graff, Assistant Care Pastor, St. Andrew UMC, will be speaking on the theme "Growing in Blessedness". This is a Pot Luck Salad Luncheon. All women are welcome. RSVP to umwinfo@stlukeshr.com We will carpool from church at 7:30am.

• April 1-3 –YMCA of the Rockies Spiritual Life Retreat

Estes Park, CO **Theme:** Holy Fools for Christ based on I Corinthians 4:10. **Speaker:** Kelly Bowles of Phillips UMC in Lakewood. For more information, please visit <http://rmcumw.org/events/the-spiritual-retreat/>

• April 24 – UMW Spring Celebration - Tea and Textiles 2:00-4:00pm. Join us for an afternoon tea, celebrating Textiles throughout the ages. More information is coming soon.

• August 28 – Fall Pie and Prayer

• December 6 – Candlelight Dinner

Our three Interest Groups meet monthly and warmly Welcome you anytime during the year.

Common Thread: *Who We are:* We are a group of young-at-heart ladies who meet together for Friendship, Fellowship, Caring, Sharing, Devotional, and Fun in Retirement.

What we do: We are not a sewing group. We weave our threads of friendship throughout our group sharing each individuals life and accomplishments, caring and praying about each other challenges, having fun in retirement. *When we meet:* Meets First Thursday of each month, 10:00am, Room 206

Contact: Caroline Butler carolinebutler@q.com or Betty Smith 303- 797-3225.

Evening Book Group: Fiction and Non-fiction books take you on a journey filled with imagination, challenges, satisfaction, enjoyment. (Meets Fourth Monday, Room 206, 7:00pm, 6:15pm Potluck)

Contact: Renae Parra renaeparra@aol.com or 303-683-0872

- March 28 - "Go Set a Watchman" by Harper Lee
- April 25 - "A House in the Sky" by Amanda Lindhout

Itch to Stitch: Celebrating the talents of Crocheting, Knitting, and Quilting, enjoying friendships and generously donating their projects to charities. All skill levels welcome. (Meets monthly on 2nd Saturday at 10:00am in church basement)

Contact: Fran West at 303-797-7107 (mfranwest@gmail.com)

Check out Our Facebook page!!! - "St. Luke's UMC Itch to Stitch Guild"

- March 19 - DATE CHANGE! Continue working on quilts. Bring sewing machine, rotary cutters, cutting boards, irons and boards, scissors.
- St. Luke's UMW Itch To Stitch Guild made a "Special Delivery" to Children's Hospital of Sixteen blankets and twenty-seven layette and hats! *photos above*

We Invite you to join us to be a part of our Missional and Spiritual Journey. UMW **Supports** you thru friendship and fellowship ~ **Keeps** you in Prayer ~ **Gives** you a new insight into books ~ **Enhances** your handiwork skills ~ **Satisfies** mission needs ~ And... they supply you with **Renewal**. Women are welcome to attend an Interest Group of UMW anytime during the year.

For further information about UMW go to www.stlukeshr.com or email us umwinfo@stlukeshr.com. Coming soon: a new St. Luke's UMW Facebook page!



"The organized unit of United Methodist Women shall be a community of women whose purpose is to know God and to experience freedom as whole persons through Jesus Christ; to develop a creative supportive fellowship; and to expand concepts of mission through participation in the global ministries of the church."



Children's Ministry News

Praise, Play & Prayers with St. Luke's Kids

Children's Ministry is Hoppin' at St. Luke's!

We are proud to announce the addition of 2 new Acolytes: Olivia Craine and Lily Dunlap. Congratulations! We love our



St. Luke's families! Throughout the week, at events, rehearsals, during SLY, Jr., Parent's Time Away and at Sunday School we are creating community. We are also learning about Holy Week and about

prayer and creating sacred spaces to spend time talking and listening to God. It's been simply inspiring to journey through Lent with our children and share our lives together. **Come be a part of Sunday School.** Our Sunday School servants are amazing. You are invited to be a part of the team. Go to stlukeshr.com, click on "calendars" across the top and then click on "children's ministry servants" and sign up! We need YOU and Sunday School is an awesome place to be on a Sunday morning.

MARK YOUR CALENDARS:

(check our website for full calendar)

- March 13 (SUN) - 9:30am SUNDAY SCHOOL: Joy Trek (PreK: 2-4 yrs.) begins 3-week lesson: "Palm Sunday to Easter" Sign up to serve here
- March 16 (WED) - Children's Dinner Theater REHEARSAL 6:00-7:30pm
- March 18 (FRI) - PLAYGROUP 9:00am - All are welcome!
- March 20 (SUN) - EASTER FUN DAY 12:30-2:30pm Sign up to help. Thanks!
- March 23 (WED) - Children's Dinner Theater REHEARSAL 6:00-7:30pm
- March 27 (SUN) - EASTER! (No Sunday School) - Family Worship Services at 8:00, 9:00, 10:00 & 11:00am
- March 30 (WED) - Children's Dinner Theater REHEARSAL 6:00-7:30pm - For all children who auditioned. Dinner and show is April 29 6:00pm.
- April 1 (FRI) - PLAYGROUP 9:00am - All are welcome!
- April 2 (SAT) - PARENT'S TIME AWAY 9:00am-noon RSVP with Ms. Sam
- April 3 (SUN) - 9:30am PEAK K-4th Grade SUNDAY SCHOOL begins 3-week lesson "People Who Make A Difference"

Wacky Wednesdays

Each week children will enjoy music, crafts, chapel time and games.

The theme this year is:



Open to all children age 2 1/2 years through entering 3rd grade! (Must be potty-trained to attend.)

TIME: 9:30am-noon

WEDS.: June 8, 15, 22
July 13, 20, 27

Registration is \$20 per day per child.

(This helps cover the cost of supplies, snacks and teacher salaries.) If you have any

questions regarding registration

contact: Tami Clement at

tami@stlukeshr.com

Register now! Forms available at the Little School Office.



Vacation Bible School

VBS Morning session:

June 27-July 1 9:00am-noon

VBS Evening session:

July 12-14 5:45-8:00pm

Online Registration begins April 18 at 2:00pm

www.stlukeshr.com

\$40 per child per session.

For all kids age 3 (by 9/30/15) through entering 5th grade.

Adults: Volunteer to help all days of your child's session and get one free registration.



Sharon Oliver
Director of
Children's Ministry



Samantha Leahy
Director of Early
Childhood Ministry



Stephanie Kirk
Children's Ministry
Coordinator

St. Luke's Kids
Growing with God

Holy Listening for Kids

In caring for the spiritual lives of our children we offer Holy Listening during Sunday School. A Holy Listener is an adult who has been trained in the spiritual gift of listening to a child using tools that allows them to feel the presence of God. Through the process of "Holy Listening" children are able to explore and make spiritual sense of what is happening in their lives, to use their own spiritual strength to work through problems, and learn to trust their inner selves, knowing that God is present with them. This helps a child grow in their connectedness with those around them, in their capacity to pray for others, and in their abilities to lead loving, compassionate lives. For questions or for more information please feel free to contact us.

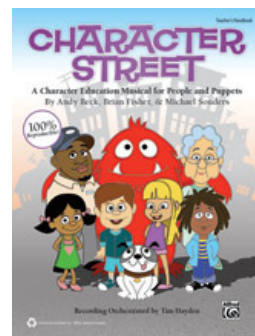
Children's Dinner Theater

Friday April 29

Dinner 6:00pm, Show 7:00pm

Rehearsals have started and we are so excited about our production of Character Street. St. Luke's Kids 1st-6th grade tell the musical tale of a monster, his friends, a birthday party and what it means to have

character. And for the first time, we are partnering with our St. Luke's Puppet Ministry for this show! Enjoy food and fun! Free-will donation. Proceeds benefit our Guatemala outreach. We are excited to help bring clean water to the families in Guatemala.





Kay Swanson
Director of
Little School



Little School News:

March Merriment and Mischievousness!

Leprechauns and shenanigans will abound at Little School during the month of March! It is always fun to see our rooms "messed up" by sneaking Leprechauns that love to cause mischief! We are always surprised to find that they have left us treats of GOLD ~ so it is all in good fun! Chapel this month is about the Fruit of the Spirit: Self-Control....do you think the Leprechauns need to come to chapel? We will also be looking for signs of spring and talking about new life and the gift of Easter from God.

We had our wonderful **CAREER DAYS** on March 2 & 3rd, where our parents and other friends came in and talked to us about their jobs or hobbies. We had such a great variety that it made it fun, educational, and exciting! This year we had an aerospace engineer that talked about his weather satellite, a dad that does Motocross racing (he brought in his bike and all his safety equipment), the Lakewood Chief of Police (grandpa) came and talked to us about safety, a professional artist, a dance teacher that kept us moving and one mom that was a visual merchandizer! She brought in mannequins to dress! All and all a super day for the kids!

REGISTRATION IS STILL OPEN! Time for you to start thinking about your child joining us for preschool, Fall of 2016? Tours are on Wed. and Thurs. mornings at 11am, no appointment necessary and PLEASE bring your children! Classes are filling up quickly, so please do not hesitate. Questions? Ms. Kay kay@stlukeshr.com or 303-791-1982. For those of you that have already registered, Ms. Tami will be sending out confirmations the first week of March ~ so look for her email=)

We would like to partner with our older generation of St. Luke's members, as many of our children do not live close to their grandparents, and hardly get to see them. We are planning on new opportunities for wonderful seniors to interact with our children! Look for information that will be coming about how you can become a part of our exciting ministry to children!

Little School will take a well deserved Spring break from March 20-25. It will be a full week with Holy Week and Easter Celebrations. We encourage you to participate in one of our meaningful worship experiences during this time.

Happy Easter to all! *Blessings from Ms. Kay and Staff*

"Children go where there is excitement and stay where there is love."



Chinese New Year Parade by our Explorers!



St. Luke's Little School
- Best Preschool in
Douglas County 2013,
2014, 2015 & 2016!

Seasoned Voyagers Update



A 55+ MINISTRY

On February 9 we had our latest Seasoned Voyager outing to Boulder.

First stop was at the historic Chautauqua Park for a tasty breakfast brunch and group pictures (taken by Jon Streaty) at the dining hall. We then continued back down scenic



Highway 93 to Table Mesa Drive and up the hill to famed IM Pei designed National Center for Atmospheric Research (NCAR) complex to which I'd visited many years ago when their supercomputer was a physically much smaller Cray I supercomputer machine. Their new, room filling (Yosemite) supercomputer, is physically much, much larger (think pictures seen on TV of IBM's Watson) and isn't even located at the Boulder NCAR complex but is located at a facility just West of Cheyenne Wyoming.

We were given a greatly informative tour by our very knowledgeable hostess named Eileen Carpenter. There are many informative posters of climate: past, present and projected future on display and some remarkable photography of climate and solar events. NCAR is indeed a very interesting place to visit.



On my earlier visit, years ago while I was still working as a computer developer, I was interested

in, and awed by, the Cray and the huge room-filling IBM 7090 series that crunched data continuously just to keep the Cray fed for its supercomputer modelling. This time, the sheer magnitude of work being done by scientists there, as exhibited by displays and our hostess' descriptions, is awe inspiring in itself.

-David Lameroux

Trustees Corner

Volunteering at St. Luke's

Volunteer opportunities at St. Luke's come in all shapes and sizes, never more than right here in our building. Six times each year, along with our members, constituents, and friends, Trustees work to organize Service Saturday events where we tackle our own 'to do' lists and/or prepare for special events. Volunteers are invited to roll up their sleeves and give us a hand, and we're pleased to sign off on any volunteer forms you or your students may be using to document hours.

Service Saturday & other Planned On Site Volunteer Events for 2016 include:

- **March 19: Prepare for Easter - Interior Deep Clean – 8:00am–noon**
- **May 7: Prepare for Mother's Day – outside spruce up 8:00am–noon**
- **August 20: Fall kick off – Outdoor & Indoor cleaning – 8:00am–noon**
- **November 26: Hanging of the Greens – Church Wide Efforts! – 8:00am–noon**
- **December 24: Resetting the sanctuary for Christmas Sunday Service – 8:15- 9:45pm**
- **January 8, 2017: Taking down the greens – noon-1:00pm**

Please take a minute to mark these events on your calendar – we'd really love to have your help! All ages are welcome, but if your little ones would be more comfortable in the Nursery, please connect with Sam to arrange childcare 48 hours in advance at: sam@stlukeshr.com



More from Les: Exile! by Rev. Les Ludlam

Psalms 137 is a song of lament by those who had been taken into exile in Babylon by Nebuchadnezzar after his defeat of Judah. There is a strong expression of dismay and a feeling of separateness. *"We have been cut off from all that we hold valuable and good," they cry out. "We have hung up our harps; we cannot even sing praises to our God."*

The feelings of separation and isolation are total. All the connections with home and temple and God have been broken, the familiar support systems are gone. Their world has become one of confusion, conflict and anguish. All the foundations on which they had based their lives have been shattered.

Like these ancient Judeans, many or perhaps all of us, at times, have found our selves in a state of exile. We may experience a situation where we feel separated, isolated, cut off from our normal support systems; we seem to have lost our ability to control things. I, too, have experienced this exile.

My employer, ARCO, in an effort to broaden its base of business in the 1970's, had acquired the Anaconda Copper Company and merged it with its own mining division, ARCO Coal Company. The new organization was to be called Anaconda Minerals Company. The corporation's Board then asked Anaconda's management to look at all their business activities to determine if they fit an overall corporate vision and business plan. I had been assigned to manage a regulatory affairs group in Anaconda Minerals and was asked to participate in a division reorganization study. I recall feeling a bit like a fish out of water, but resolved to do the best that I could in the job.

The winds of change were blowing hard! I was called one day to the office of my department head in the reformed division. I was thanked for cooperating fully in the Anaconda Minerals organization study, for being insightful about the mission and strategies of the division, and then I was told that my entire group had been classified as "surplus" employees. We would have to find jobs elsewhere.

I was hit with the realization that my ability to support my family was in jeopardy. And the same was true for my employees: Jan, Bob, Bal and Aileen.

Even though we had been expected it, the announcement still brought a devastating feeling. I met with my staff that afternoon and discussed our next steps. What had started as an unemotional, almost mechanical process had suddenly become very personal! This division no longer needed my group. I knew it was up to us to do something about it.

We were all relocated to a different office area in the building and given access to job search and outplacement services. This was exile, much like that of the ancient Judeans in Babylon. It brought anxiety and confusion. It tended to cause withdrawal, depression, physical and emotional damage. It was not a time when one felt like singing!

We got to work at the mob of finding new positions. Fortunately things happened quickly. Another department had an urgent need for a skilled administrative assistant and snapped up Aileen quickly. Bal found a job through his connections in the State of Colorado and Jan was offered a new position with ARCO Corporate government affairs. Bob continued in denial for a time, and then found a job opportunity with another company, out of state.

After a few weeks Bal, Bob, Jan and Aileen seemed to be progressing well in their new job directions. I saw a position advertised in the Company newsletter, "The ARCO Spark." The position, "Manager of Integrated Planning," was with the ARCO Transportation Company, the pipeline and marine shipping division of the corporation. "I'm an engineer," I thought, "but this is the direction my career needs to take. I'll go for it."

We all encounter exiles in our lives at times. Our minds tell us God has promised us a place to go and the exile will not continue forever. However, the nature and place of the return might not look like what we expected or sought. The return is there, open for our acceptance and action.

I knew a former colleague, Steve, who now worked for ARCO Transportation Company, and decided to call him. "Steve, I'm applying for the position and would like to communicate my interest to the supervisor. The job description says that an MBA is required and I'm halfway through my MBA program at CU. I think my job experience in ARCO that should qualify as relevant business experience. Could you help me make that connection?"

"Sure, Les!" was the reply, "But you've already done it." Steve laughed, "I'm the supervisor! Let me talk to Hi Bond about it." Competition for the position continued to completion and I was offered the job in Long Beach, California.

I accepted the offer, moved to California and soon learned that the transition from oil shale engineering and development to financial planning and business analysis was far greater than I might have ever dreamed! The ending led to an uncomfortable new beginning. Babylon was different; there would be some adjusting to be made. *God bless us all. –Les (watch for part 2 of the story to come soon.)*

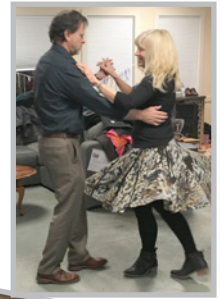
It brought anxiety and confusion.

Our Mission: To promote healing and wholeness by creating opportunities for authentic connection, and by providing experiences that inspire and transform.



BALLROOM DANCING CLASS:

Many thanks to Steve and Cathy Collins for their fun, often hilarious, and always elegant instruction in the basics of the Waltz, Foxtrot, Swing/Jitterbug,

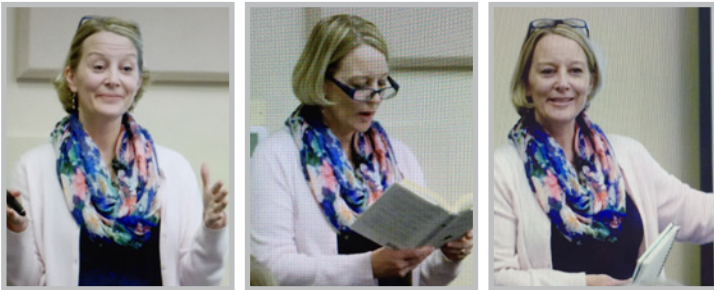


Rumba and the Cha Cha. We averaged 45 participants per class, and the generational diversity (teens to post-seventies, with every decade in between) suggest that the dancer's spirit is alive and well at St. Luke's. The Center for Spiritual Engagement hopes to offer more dancing options in the future, and we invite your ideas and engagement. Please visit our website to see more photos from dance class.



Visit our website stlukesce.org to learn more!

Spirituality and Wellness Speaker Series: Schawn Kellogg



On March 1st, Rev. Schawn Kellogg inspired a full house with her message of "Catch Yourself Coming Alive." Rev. Schawn asked us to consider how our deepest, most spiritual selves desire that we connect with those things that make us come more fully alive in our daily lives. We looked at how to "connect the dots" from our earliest childhood memories into our adult lives and to notice how these memories reveal themselves in who we are today and how we experience joy. Schawn showed us how memories from children's books and doodling can provide paths to connect with our inner selves. We shared our stories and our earliest memories with each other. It was an evening of fun and deep connection and an opportunity to see a greater meaning and purpose in our lives. Thank you, Schawn.

Classes and Experiences:

MORNING YOGA WITH GARGI AGARWALA

continues on Thursdays through May 26. We are moving to the Youth Room to accommodate our growing number of participants. Due to Spring Break, there will be no classes on March 31 and April 7. All abilities are welcome. Suggested donation - \$10. (renaeparra@aol.com) Childcare available with 48 hour notice. (sam@stlukeshr.com)

PRAYING FOR OUR CHILDREN:



What would it be like for us to gather together and lift our children in prayer – to lift up all of our fears, all of our anxieties, and all of our gratitude? Whether you are a parent, a grandparent, an aunt or uncle or just wanting to lift the children in our community in prayer, this is for you. Together we expect to encounter the God of life through the simple practice of prayer. Join us in the journey of Praying For Our Children each

Wednesday in our Chapel from 6:30-7:30pm beginning March 16. Childcare is available by reservation. More information please contact Sam@stlukeshr.com "For where two or three gather in my name, there am I with them."—Matthew 18:20



Introducing Sacred Travel May 12-14

The Center for spiritual Engagement invites you to travel with us on a three-day, two-night spiritual pilgrimage, as we experience Northern New Mexico! For those of you who love adventures, exploring, hiking and the outdoors, please join us! The Non-Refundable Registration Fee is \$115.

(Accommodations are priced separately). Registration Fee includes transportation, one lunch, trip coordination, participation fee, park entrance fees, and a small contribution to support St. Luke's ministries. Space is limited to 12, so register early! Registration deadline: March 15. Contact Renae Parra (renaeparra@aol.com) or Sallie Suby-Long (sallie@stlukeshr.com) for complete details.

Outdoor Adventures: SAVE THE DATES:

April 9 – O'Fallon Park near Evergreen

May 14 – TBD

June 11 – TBD



Upcoming Events!

- * **March 11-13:**
Confirmation Retreat
- * **March 13: 9:30-10:30am**
SLY AM Miss Christi
5:30-6:00pm SLY Dinner- \$2
6:00-7:00pm Special Parent Presentation "Gifts of the Dark Wood: Talking with your Teen" (Contact Dave for Questions)
6:00-7:30pm SLY PM Movie Night
- * **March 16:**
5:30-6:30pm Homework Hour
6:30-8:00pm Wed. SLY Get-to-Know-You Games
- * **March 20:**
9:30-10:30am SLY AM Miss Amy
5:30-6:00pm SLY Dinner- \$2
6:00-7:30pm SLY PM Make Lunches for the Homeless (and help deliver them on Monday)
- * **March 23:**
5:30-8:00pm Laser Quest!! Bring Money!! (no homework hour)
- * **March 27:**
No SLY Events - EASTER!!
- * **March 30:**
5:30-6:30pm Homework Hour
6:30-8:00pm Wed. SLY Movie Night
- * **April 2: 6:00-9:00pm**
Confirmation Ceremony
- * **April 3:**
9:30-10:30am SLY AM Jeremy
11:00 service Confirmation
Students presented to Congregation
5:30-6:00pm SLY Dinner- \$2
6:00-7:30pm SLY PM- TBD
- * **April 10: A.C. Project Event 1:00pm**
- * **April 24: Progressive Dinner**

* **Sign up to receive our emails and Check stlukeshr.com and click on "Youth" or "SLY" for up-to-date info on programs, activities, opportunities and more!**



Sundays:

- **9:30-10:30am – SLY AM**
Exploring life issues and the bible
- **5:30-6:00pm – Community Dinner** - \$2 per person.
- **6:00-7:30pm – SLY PM**
Check out our website for details.

Wednesdays:

- **5:30-6:30pm – Homework Hour**
- **6:30-8:00pm – Wednesday SLY**

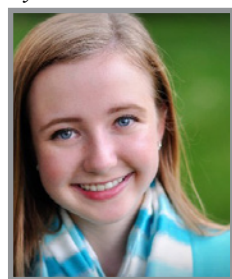
ON THE SLY: We are SLY!

SLY is a place for all seventh through twelfth graders. **We are an inclusive group** of youth who want to meet you where you are and give you a place to discover more about God, religion, and faith. **We love everybody**, and we want to hear what/where/when you have experienced the divine. We want to grow together toward becoming whole people by living up to Jesus' teachings of Love, Acceptance, Justice, and Hope. **We chill out**. Everyone needs a safe and relaxed place to hang out with their friends, and we want to give you that space. **We support each other**. No matter whether your days have been good or bad, we're here to celebrate the good things in life with you and be a shoulder to lean on when times are tough. Some of us have been where you are, and we can give you some helpful advice. Sometimes you just need someone to talk with and connect to, and we're here for that too! **We live to serve**. We have a dedication to serving communities around the world and being good stewards of everything we come into contact with. Join us!

Yours in Christ, Dave, Amy & Jeremy

Creating Inclusive Community

By Liza Nolder



As a high school student, I have many fond memories of weekends spent on SLY retreats with friends, stealing the boys' mattresses and staying

up far too late. Now, as a graduate of SLY and current volunteer, I recently had the opportunity to assist in the planning of a weekend retreat for 9th and 10th graders. Dave and I worked hard to not only plan the activities, but gather supplies, pick out bible verses, and select the perfect movie. I greatly underestimated the amount of work and time the leaders dedicate to these retreats as we spent many afternoons thinking of yet another 15 minute closer activity.

The weekend's theme was "intentional inclusion": how do we purposely and intentionally invite others to be a part of our community? Why should we do this, and how can it change the world around us? My favorite moments from the weekend weren't watching the kids complete any of the activities we planned, but rather it was seeing them take the theme and put it into action by creating an inclusive community within themselves. They reached out to one another, got to know each other better, and played several very intense games of capture the flag. Being a leader instead of a youth definitely gave me a different perspective, and getting to simply watch them connect and build friendships was the best part of the trip for me. I hope to be able to attend another one soon!



Dave Laurvick
Director of
Youth Ministry



Amy McMullen
Assistant Dir. of
Youth Ministry



Jeremy Brown
Assistant Dir. of
Youth Ministry



An Opportunity Not To Miss!!

Four years ago, Ethan, Doug, Ryan and Matt, simple college students, packed their bags for a remarkable experience most people could never imagine doing. These four young men felt a calling, a need to experience something more than the life they were living. It took nearly a year to plan, but their ambition to leave the comforts of their homes to travel to some of the most destitute and impoverished areas of the world and to share the love of Jesus resulted in an extraordinary story.

They took cameras with them to help document their year long journey. From earthquake relief in Haiti, to giving clean water in Fiji, to aiding sex trafficking victims in India, they partnered with organizations and ministries in nine different countries in total.

As you know, mission work, reaching those in need, and being the hands and feet of Christ out in the world is one of the core values of our youth group. This is why we are honored to be a hosting of the beautifully done documentary on their trip across the world titled **The AC Project: To The Ends Of The Earth**. **On April 10 at 1:00pm we will be hosting a viewing in the Sanctuary**. This is for everyone! Youth or not, member or not, no cost, come and bring your family and friends!

But wait, there's more!! After the film, stay for a presentation and a Q & A session with Ethan, Doug, Ryan and Matt. That's right, the four young men who went on this amazing journey are going to be here to talk about their experience! Check out the trailer for the film on our website. This is definitely an event **NOT TO MISS!!**



Sheri Henry
Director of Finance

Thank You for Your Financial Support

We offer a variety of ways for you to make your contributions:

- Cash, check, and stock transfers
- Scheduled automatic withdrawals from your checking or credit card accounts. You may enroll in either of these methods by going online at www.stlukeshr.com or in person here at the Church.
- Go online at www.stlukeshr.com and do a one-time transaction from your checking or credit card account.

Thank you to everyone who has returned your 2016 Commitment Card.

Thank you for your generosity.



Meet the Music Ministry: Grace Notes

Welcome to our new series *Meet the Music Ministry*! Each month, we will highlight a group from our Music and Arts Ministry. Grace Notes is a

small vocal ensemble that enjoys presenting a wide variety of SATB (soprano, alto, tenor, bass) choral repertoire. Styles range from contemplative, traditional, to the latest Gospel arrangements. Last year they sang a traditional work of Bach as well as a newly penned arrangement by Joel Raney. Rehearsing and singing seasonally (about 7 times a year), this group is open by audition. If you wish to consider joining, please contact Ken Mervine (kenm@stlukeshr.com). For information on all the music groups, please browse the Music and Arts brochure at www.stlukeshr.com/PDFs/brochures/MusicArts.pdf.



Lunch Ministry

Every Monday St. Luke's prepares and delivers 100 lunches to Civic Center Park for those who are hungry. During the summer and on most holidays you will see families and children

showing up to help. These families realize volunteering in our community has tremendous benefits for a child. It fosters a family bond by creating conversations and helps children to build their self confidence and a sense of purpose. The simple thank you they get from those who receive the lunches goes a long way for kids to feel good about what they have done. Thank you to those who serve each week and to the many children, families and groups at St. Luke's who support this ministry. Your time lending a hand is the answer to someone's prayer. For more info contact Sam@stlukeshr.com



James Ramsey
Director of Music & Arts Ministries



Kenrick Mervine
Associate Dir. of Music Ministry/
Organist



Kay Coryell
Dir. of Handbells & Children's Music
Ministry



Kristi Pawley
Music & Arts
Admin. Assistant/
Accounting Clerk

Reader's Theater – *The Princess Bride*



The Princess Bride is coming to St. Luke's! The Reader's Theater will present a staged reading of

the movie script on Saturday, April 9 at 6:00pm. Join us for another delightful Reader's Theater.

Based on William Goldman's novel of the same name, *The Princess Bride* is staged as a book read by a grandfather to his ill grandson. The grandfather promises a romance-weary grandchild that the book has much more to deliver than a simpering love story, including but not limited to fencing, fighting, torture, death, true love, giants, and pirates. Indeed, *The Princess Bride* offers a tongue-in-cheek fairy tale depicting stable boy-turned-pirate Westley's journey to rescue Buttercup, his true love. She agreed to marry the evil prince Humperdinck five years after learning the news of what she had believed to be Westley's death. With help from Prince Humperdinck's disgruntled, former employee Miracle Max, swordsman Inigo Montoya, and a giant named Fezzik, the star-crossed lovers are reunited.

Interested in participating? Here's the schedule...

- **Tuesday March 29 at 6:00pm - Auditions**
- **Tuesday April 5 from 6:00-9:00pm - First read-through**
- **Friday April 8 from 6:00-9:00pm - Tech Rehearsal**
- **Saturday April 9, 5:00pm - Call and 6:00pm - Show**

Please sign up at www.signupgenius.com/go/8050d4cacab2ba64-theprincess if you are over 14 and would like to be part of this fun event. If you have questions, contact Melanie Kirkpatrick at melanie.kirkpatrick@gmail.com.

PAA – Seussical Jr.

All ages will enjoy the Performing Arts Academy production of *Seussical Jr.* on April 15 & 16 at 7:00pm. Horton the Elephant, the Cat in the Hat, and all of your favorite Dr. Seuss characters spring to life onstage in *Seussical Jr.* Transporting audiences from the Jungle of Nool to the Circus

McGurkus, the Cat in the Hat, our narrator, tells the story of Horton, an elephant who discovers a speck of dust containing tiny people called the Whos, including Jojo, a Who child who gets in trouble for thinking too many "thinks." Horton's challenge is twofold – not only must he protect the Whos from a world of naysayers and dangers, but he must also guard an abandoned egg that's been left in his care by the irresponsible Mayzie La Bird. Although Horton faces ridicule, danger, kidnapping, and a trial, the intrepid Gertrude McFuzz never loses faith in him. Ultimately, the powers of friendship, loyalty, family, and community are challenged and emerge triumphant! For more information and to purchase tickets visit www.stlukesPAA.org.





St. Luke's United Methodist Church
8817 S. Broadway • Highlands Ranch, CO 80129
303-791-0659 • www.stlukeshr.com

*St. Luke's United Methodist Church welcomes you to our Christian family,
where we share life. Wherever you are in your faith journey,
you are accepted and encouraged to grow spiritually.*

*Join us in growing together toward full humanity through living
the teachings of Jesus: Love, Acceptance, Justice and Hope.*

CONGREGATIONAL CARE



Brenda Schafer
Office Administrator

***Don't you be afraid,
for I am with you.
Don't be dismayed,
for I am your God.***

***I will strengthen
you....** –Isaiah 41:10*

PRAYER CONCERNS

Contact Rev. Sallie Suby-Long or Brenda Schafer if you have any additions/removals.
303-791-0659 x32, leave a note on the front desk, or email sallie@stlukeshr.com or
brenda@stlukeshr.com

LATEST ENTRIES TO PRAYER LIST:

<i>Kimiaki Maruyama – Kim Hendreschke's father</i>	<i>Gerald Feldman – Ken Mervine's father-in-law</i>
<i>David Slade</i>	<i>Dean Conklin</i>
<i>Jackie Durban</i>	<i>Natalie Murrow</i>
<i>Hank Ellison – Liz Lersch's father</i>	<i>Alisa Humphreys</i>
<i>Linda Young</i>	<i>Jane Riegel</i>
<i>Chip Rovetta</i>	<i>Pat Hathaway – Kathy Enloe-Miller's friend</i>
<i>Pat Kent – Melissa Hemphill's mother</i>	<i>Phil Hodgkinson – Sarah Benoit's uncle</i>
<i>Bill Foreman – Val Clark's colleague</i>	<i>Sarah Benoit</i>
<i>Charles Drake – Andrea Kerby's father</i>	<i>Kolby Martin – Val Clark's colleague</i>
<i>Nan Adams</i>	<i>Carrie McMullen</i>

CONGRATULATIONS TO:

*Rev. Ryan & Tami Canaday on the birth of
their son, Breck Brandon and to big sisters,
Selah & Shiloh, too!!!*



SYMPATHIES TO:

*Lisa Lehnus on the passing of her mother, Jackie Lehnus
Kris Reif's daughter on the passing of her boyfriend, Nick Munn
Kris Reif on the passing of her uncle, John Eckberg
Russ & Janie Watson on the passing of their colleague, Jason Goodding
Jon & Lisé Takayama on the passing of Lise's friend, Leigh Anderson
Michael & MaryAnne Eagelston on the passing of Michael's mother, Delores Eagelston
Ross & Natalie Barnard & Gary & Michelle Tekolste on the passing of Natalie &
Michelle's father, Glenn Barta
Sam Leahy on the passing of her uncle, Millard Berry*